

- **CRU Description:**

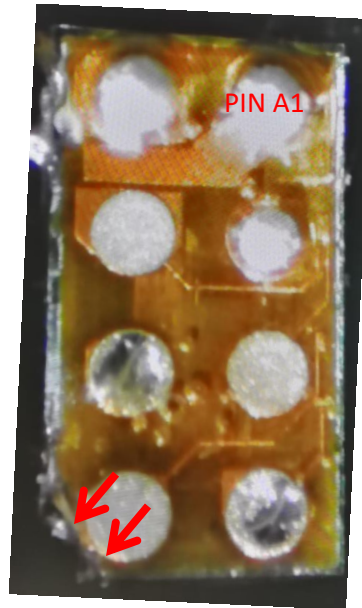
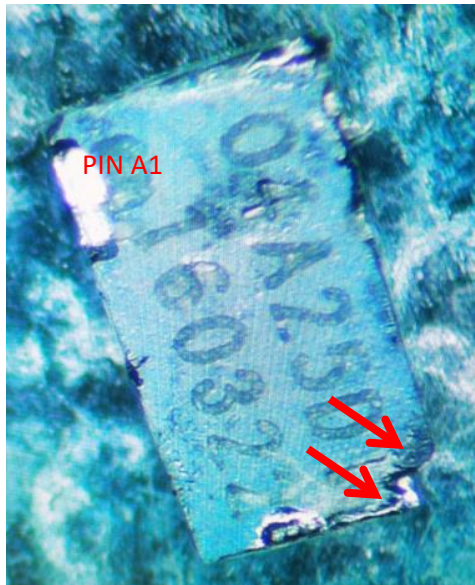
No Output

- **Package Analysis:**

- **External Package Examination:**

Returned units#1 was inspected with optical microscope.

The unit has Die chipping which extends into the active circuitry around output pin.



- **Conclusion:**

No electrical verification could be completed due to die chipping extending into the active circuitry.

This job is considered closed by TI as Non-Actionable Case (NAC). We will continue to actively monitor return trends for this device. .