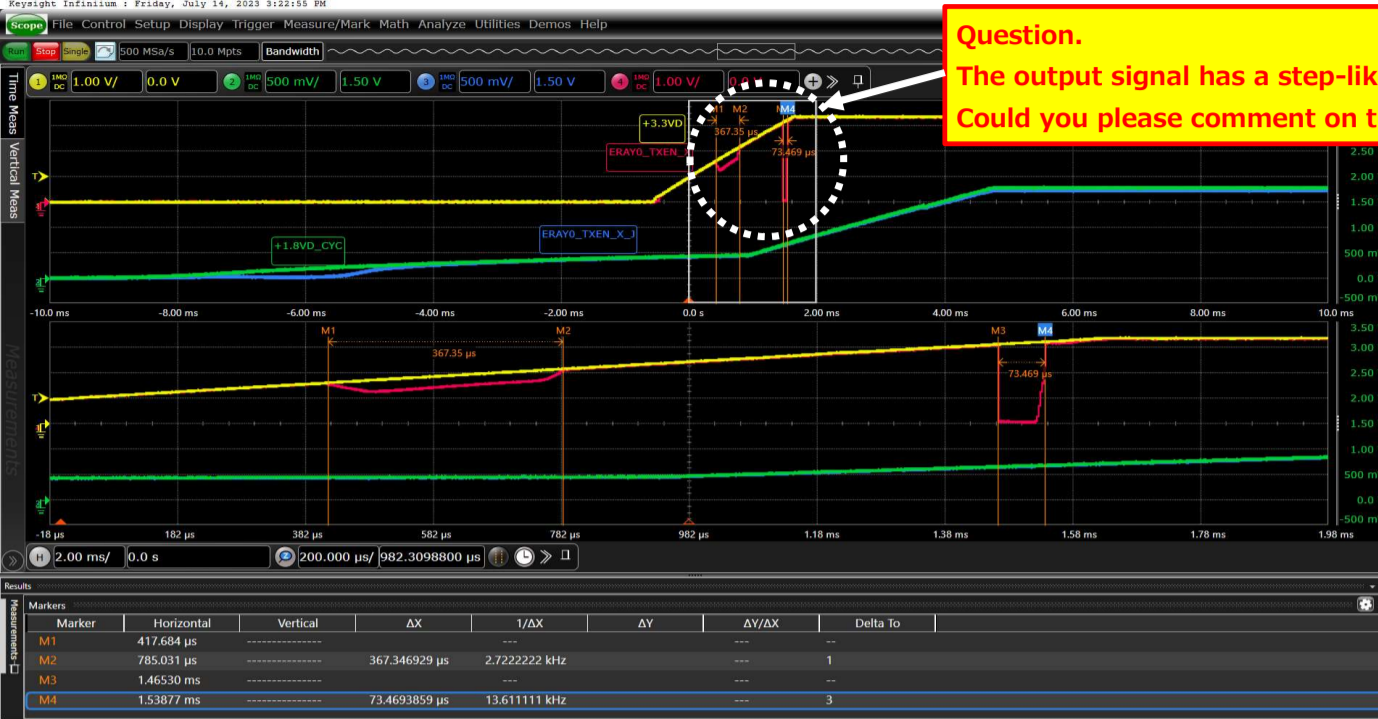


Signal description

- CH1 : +3.3VD** 3.3V power supply (Power supply to VCCB)
- CH2 : +1.8VD\_CYC** 1.8V power supply (Power supply to VCCA)
- CH3 : ERAY0\_TXEN\_X\_J** Buffer (SN74AVC8T245) input signal.
- CH4 : ERAY0\_TXEN\_X** Buffer (SN74AVC8T245) output signal.



measuring point

