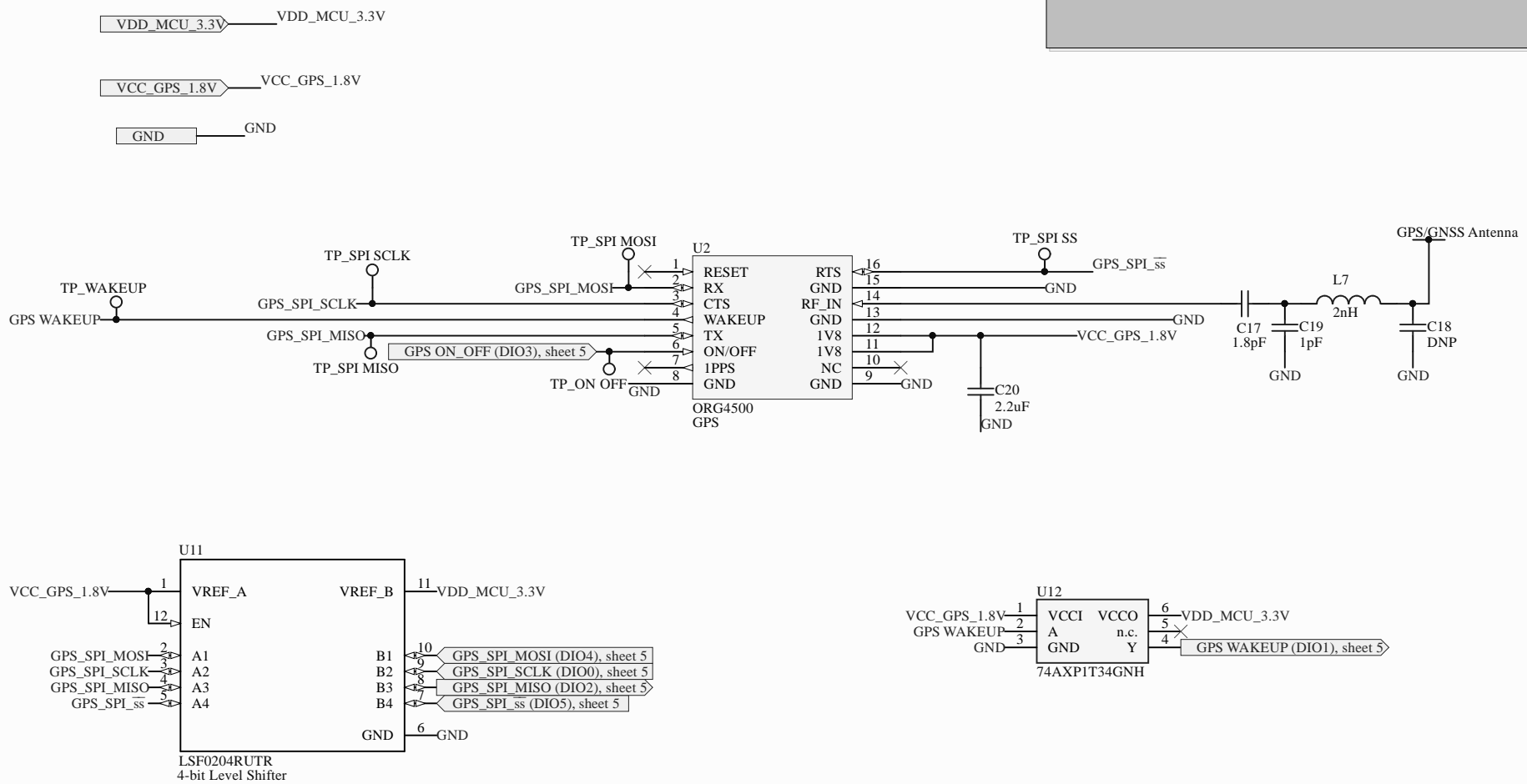
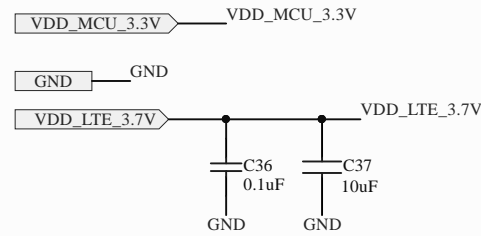


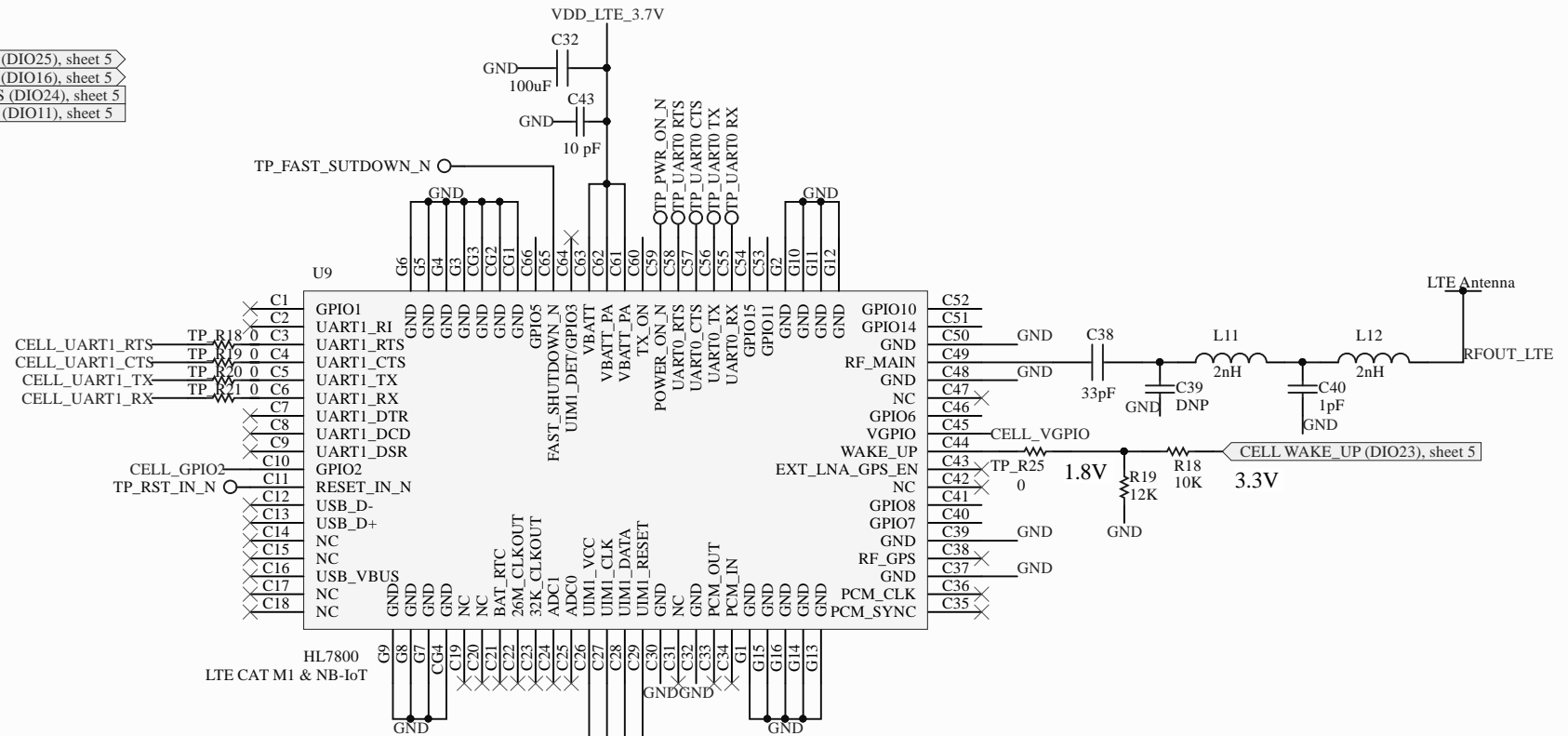
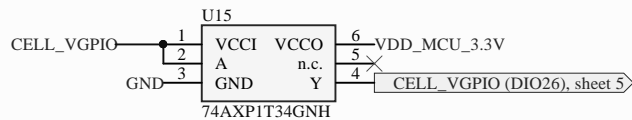
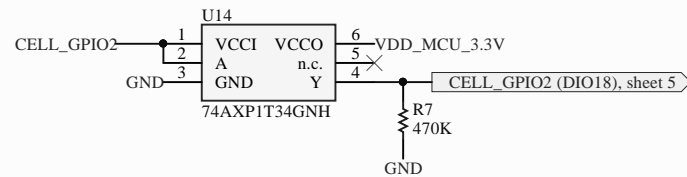
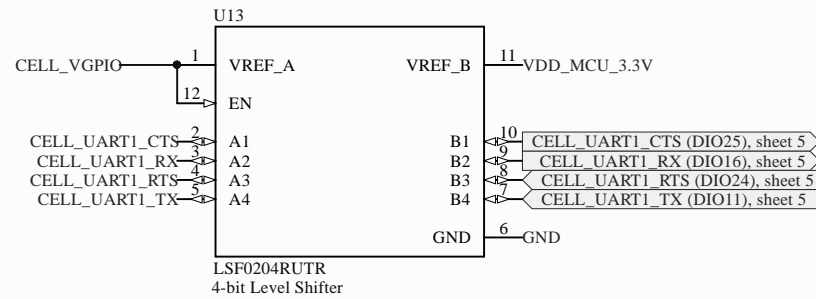
- All the pullups removed based on Dan's advice
- ON/OFF voltage divider removed based on pragash's advice
- Test Points added with designator start with TP_xxxx for easier troubleshooting on the board
- One 4-bit shifter for GPS SPI Lines added
- One 1-bit shifter for GPS WAKEUP Line added



Title			
Schematic of GNSS Module			
Size	Number	Revision	
B		4	
Date:	6/19/2020	Sheet 3	of 6
File:	C:\Users\...\GPS ORG4500.SchDoc	Drawn By:	Pragash, David



- 4 bit level shifter added for UART lines to convert between 1.8V cellular I/O and 3.3V MCU I/O
 - Test Points added with designator start with TP_xxxx for easier troubleshooting on the board
 - One 4-bit shifter added



Title		
Schematic of Cellular Module		
Size	Number	Revision
B		4
Date:	6/19/2020	Sheet 4 of 6
File:	C:\Users\...LTE CAT M1 & NB-IoT HL7800\SubDoc\Pragash, David	