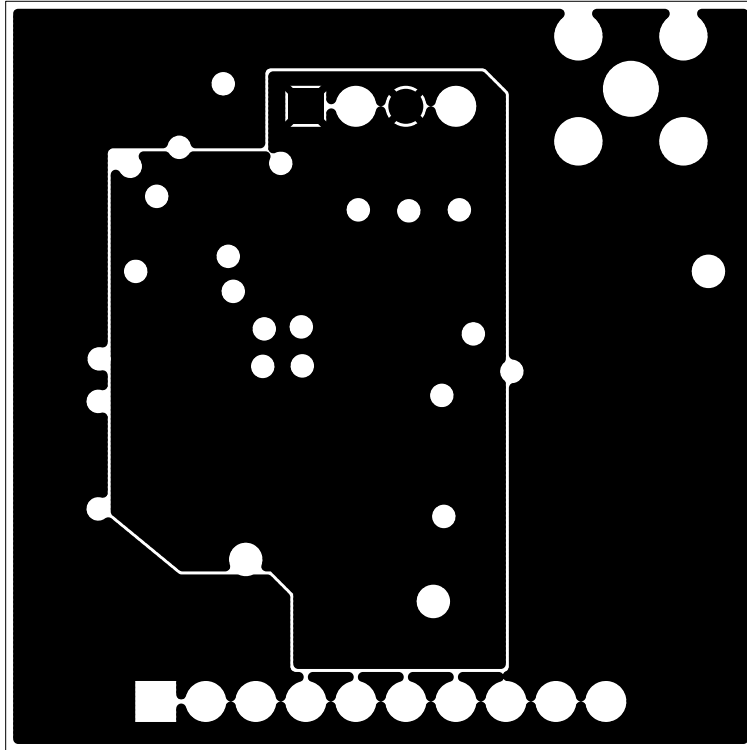


LOOKOUT PORTABLE SECURITY. copyright 2021

PCB NUMBER:160-4020A2

VIEWED FROM TOP SIDE

TOP - LAYER 1

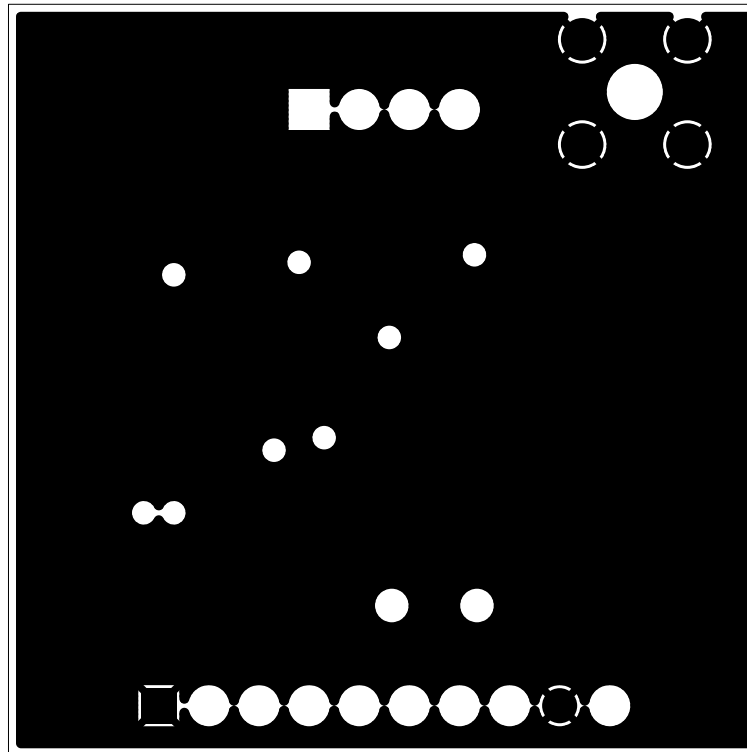


LOOKOUT PORTABLE SECURITY. copyright 2021

PCB NUMBER:160-4020A2

VIEWED FROM TOP

POWER- LAYER

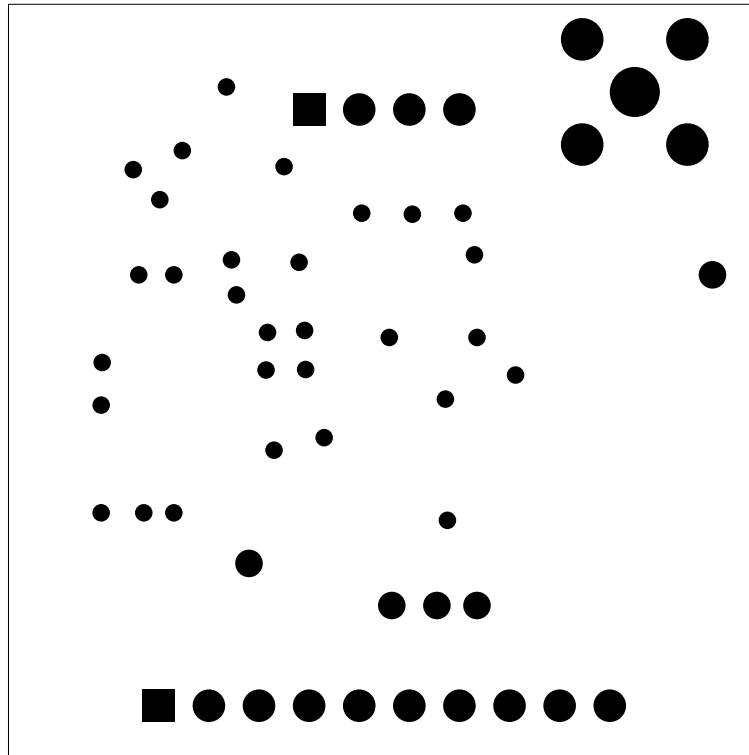


LOOKOUT PORTABLE SECURITY. copyright 2021

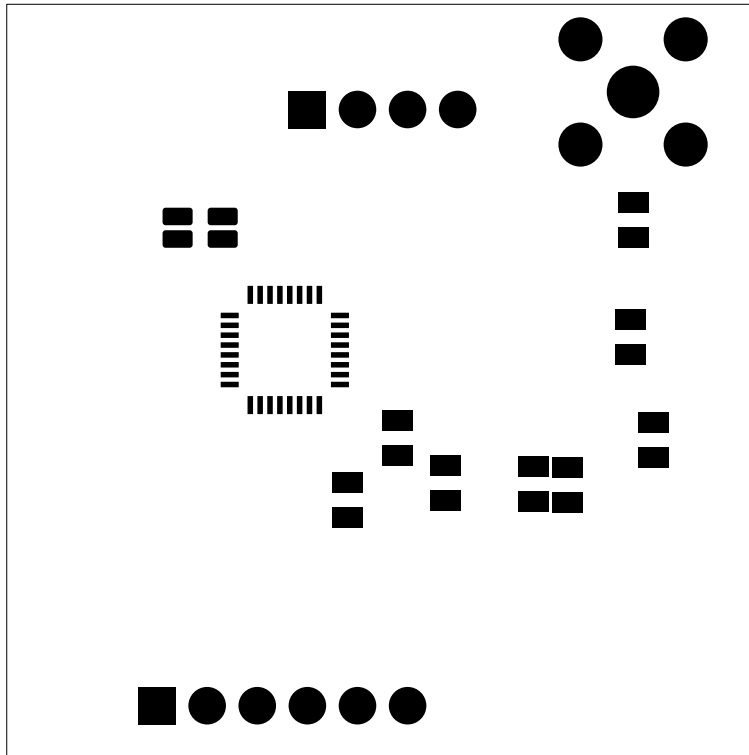
PCB NUMBER:160-4020A2

VIEWED FROM TOP

GND- LAYER 3



LOOKOUT PORTABLE SECURITY. copyright 2021
PCB NUMBER:160-4020A2
VIEWED FROM TOP
BOTTOM LAYER

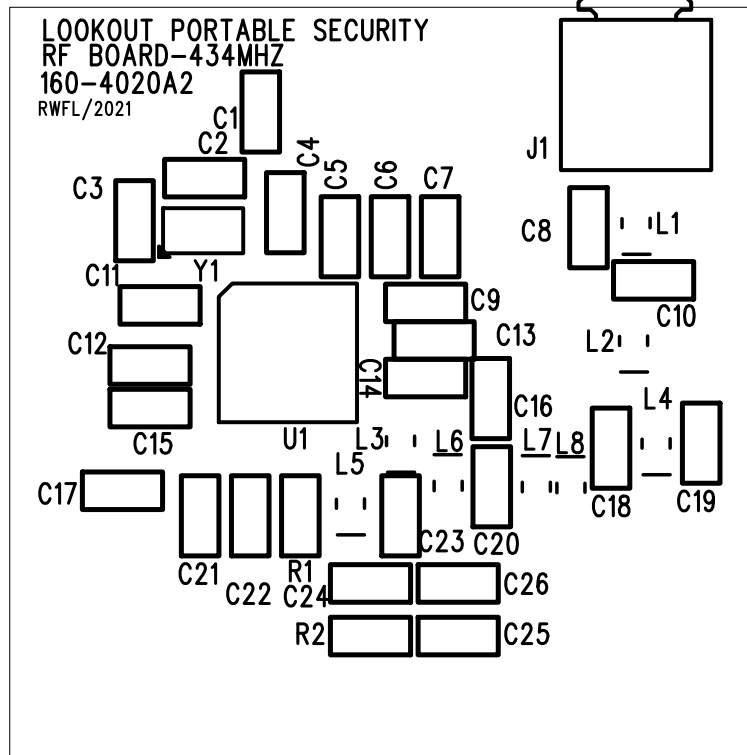


LOOKOUT PORTABLE SECURITY. copyright 2021

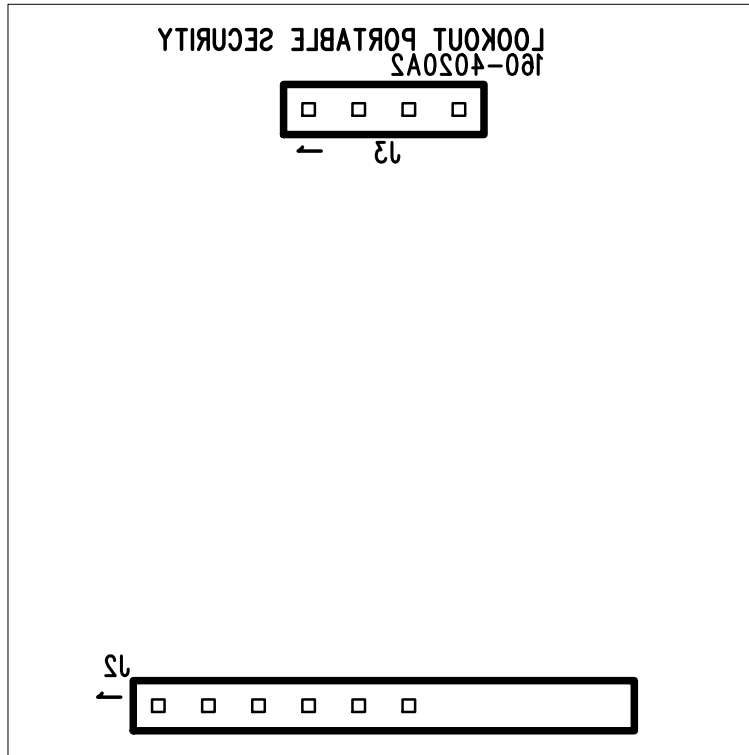
PCB NUMBER:160-4020A2

VIEWED FROM TOP

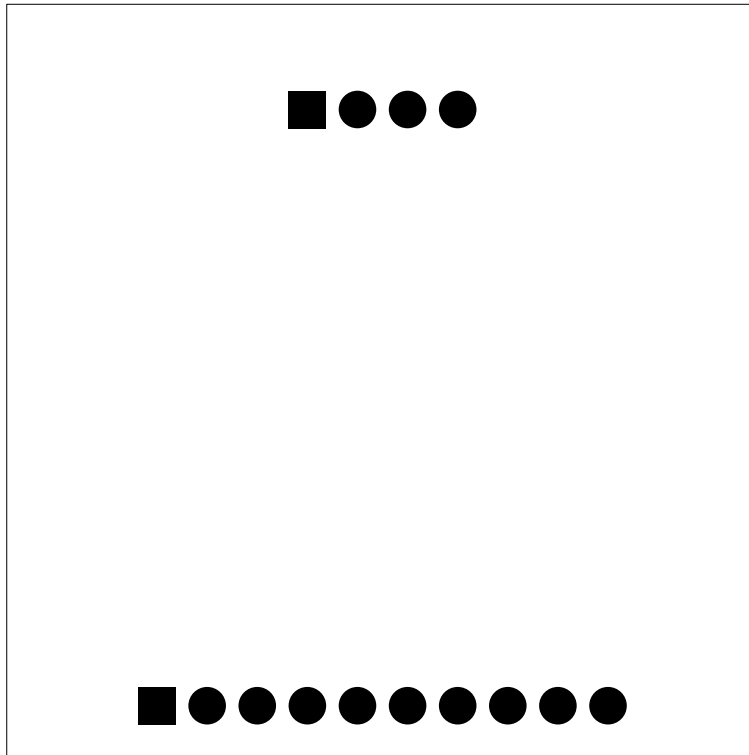
SOLDERMASK - TOP



LOOKOUT PORTABLE SECURITY. copyright 2021
 PCB NUMBER:160-4020A2
 VIEWED FROM TOP SIDE
 SILKSCREEN - TOP



LOOKOUT PORTABLE SECURITY. copyright 2021
PCB NUMBER:160-4020A2
VIEWED FROM TOP SIDE
SILKSCREEN - BOTTOM



LOOKOUT PORTABLE SECURITY. copyright 2021
PCB NUMBER:160-4020A2
VIEWED FROM TOP SIDE
SOLDER MASK BOTTOM

4

3

2

1

D

D

C

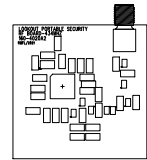
C

B

B

A

A



LOOKOUT PORTABLE SECURITY. copyright 2021
 PCB NUMBER: 160-4020A2
 VIEWED FROM TOP SIDE
 TOP - LAYER 1

REVISIONS				
ZONE	REV	DESCRIPTION	DATE	APPROVED

ASSEMBLY NOTES:

- 1) Workmanship shall be IAW the latest revision of IPC-A-610, Class 2.
- 2) Observe Electrostatic Discharge (ESD) precautions for handling this assembly. It is Electrostatic Discharge sensitive.
- 3) Apply Serial Number Label where shown.
- 4) Apply Product ID and Revision Label where shown.
- 5) Unless otherwise specified, torque requirements shall be IAW Wave7 Specification 901-00026.
- 6) Solder used shall be SN62/36Pb/2Ag and be IAW J-STD-005 for paste and J-STD-006 for Core Solder.
- 7) Through hole soldered connectors may have one edge touching the board with the other edge not more than 0.020" off the board (floating housing). Must comply with minimum lead protrusion requirements. Press fit connector must be flush to the board. In either case, board lock is fully inserted/snapped through the board (Nonfloating housing).
- 8) Core solder flux shall be of a no-clean type and its chemistry compatible with the no-clean solder paste and no-clean wave soldering flux.
- 9) Post-Solder Cleanliness shall be IAW 8.3.1 and 8.3.2.2 of J-STD-001. Both side of the assembly shall be clean. Tests to ensure absence of detrimental contamination are defined by user/manufacture agreement.
- 10) Bow and Twist after soldering shall not exceed 1.5% for through-hole and 0.75% for surface mounted printed board application

UNLESS OTHERWISE SPECIFIED
 DIMENSIONS ARE IN INCH
 DO NOT SCALE DRAWING
 TOLERANCES:
 .XX+/- .010
 .XXX+/- .020
 ANGULAR +/- deg 30'

LOOKOUT PORTABLE SECURITY

RF BOARD - 434MHZ

DRAWING BY: Rubens Ffiza Lima	DATE 04/09/2021	SIZE C	FSCM NO.	DWG NO. 160-4020	REV A2
APVD BY: Salton Wehaffey	DATE	SCALE	SHEET 1 OF 2		

4

3

2

1

D

C

B

A

D

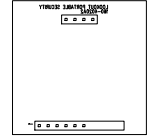
C

B

A



REVISIONS				
ZONE	REV	DESCRIPTION	DATE	APPROVED



LOOKOUT PORTABLE SECURITY. copyright 2021
 PCB NUMBER: 160-4020A2
 VIEWED FROM TOP
 BOTTOM LAYER

ASSEMBLY NOTES:

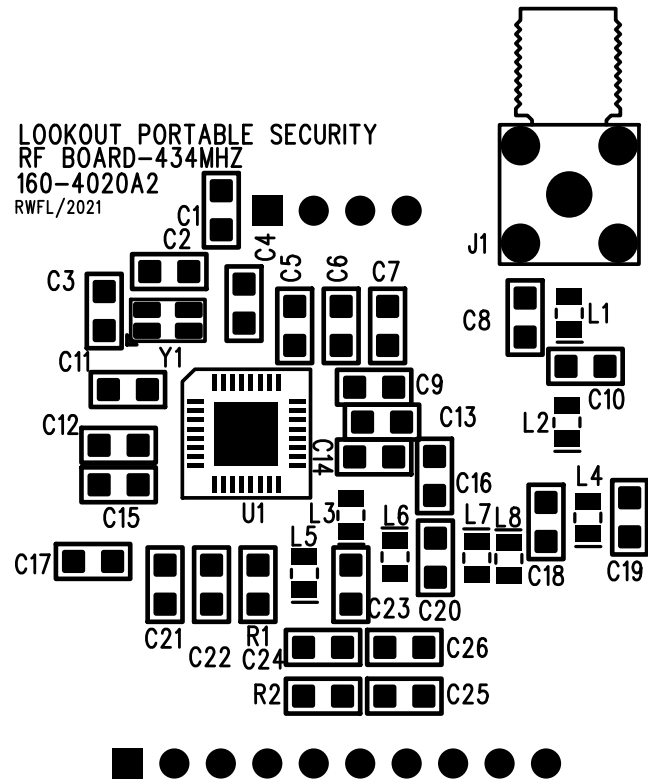
- 1) Workmanship shall be IAW the latest revision of IPC-A-610, Class 2.
- 2) Observe Electrostatic Discharge (ESD) precautions for handling this assembly. It is Electrostatic Discharge sensitive.
- 3) Apply Serial Number Label where shown.
- 4) Apply Product ID and Revision Label where shown.
- 5) Unless otherwise specified, torque requirements shall be IAW Wave7 Specification 901-00026.
- 6) Solder used shall be SN62/36Pb/2Ag and be IAW J-STD-005 for paste and J-STD-006 for Core Solder.
- 7) Through hole soldered connectors may have one edge touching the board with the other edge not more than 0.020" off the board (floating housing). Must comply with minimum lead protrusion requirements. Press fit connector must be flush to the board. In either case, board lock is fully inserted/snapped through the board (Nonfloating housing).
- 8) Core solder flux shall be of a no-clean type and its chemistry compatible with the no-clean solder paste and no-clean wave soldering flux.
- 9) Post-Solder Cleanliness shall be IAW 8.3.1 and 8.3.2.2 of J-STD-001. Both side of the assembly shall be clean. Tests to ensure absence of detrimental contamination are defined by user/manufacturer agreement.
- 10) Bow and Twist after soldering shall not exceed 1.5% for through-hole and 0.75% for surface mounted printed board application

UNLESS OTHERWISE SPECIFIED
 DIMENSIONS ARE IN INCH.
 DO NOT SCALE DRAWING.
 TOLERANCES:
 .XX+/- .010
 .XXX+/- .020
 ANGULAR +/- deg. 30'

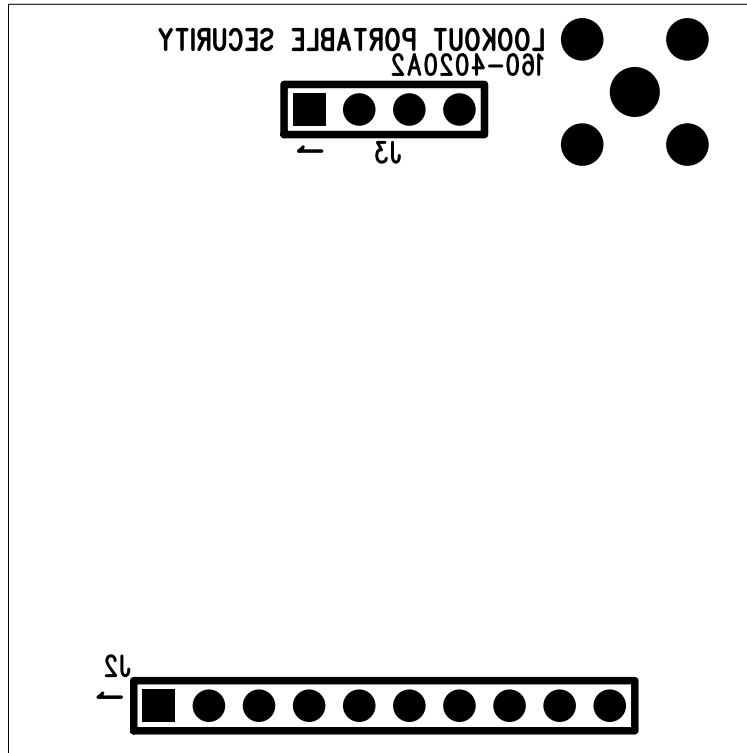
LOOKOUT PORTABLE SECURITY

RF BOARD - 434MHZ

DRAWING BY: Rubens Flizo Lima	DATE 04/09/2021	SIZE C	FSCM NO.	DWG NO. 160-4020	REV A2
APVD BY: Salton McHaffey	DATE	SCALE	SHEET 1 OF 2		



LOOKOUT PORTABLE SECURITY. copyright 2021
 PCB NUMBER:160-4020A2
 VIEWED FROM TOP SIDE
 SILKSCREEN - TOP



LOOKOUT PORTABLE SECURITY. copyright 2021

PCB NUMBER:160-4020A2

VIEWED FROM TOP SIDE

SIK\$OMEEM YERBOTTOM

4

3

2

1

D

C

B

A

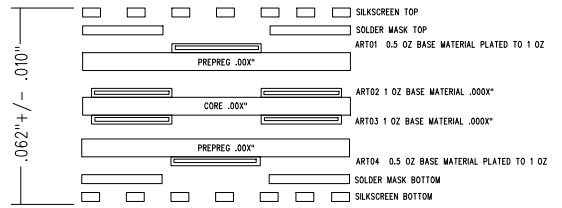
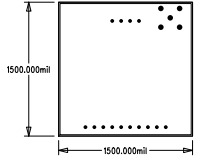
D

C

B

A

REVISIONS				
ZONE	REV	DESCRIPTION	DATE	APPROVED



NOTES UNLESS OTHERWISE SPECIFIED:

1. Outside Board Dimensions: 1.5" x 1.5" +0, -.020
2. Fabricate in accordance with IPC-M-990C, Class 2. Dimensions and tolerances per ANSIIY14.5M
3. Material: Copper Clad Plastic Sheet G10/FR4 or equiv., finish HASL, Color, TAN
4. .062 thick finished atocup, 1oz copper material, 1oz copper plate
5. All holes dimensions apply after plating. All plated thru hole to have a minimum of .001 copper plating
6. All holes shall be located within .003 of their true position. Drill hole tolerance +/- .003
7. Board shall meet the requirements of UL796 with flammability rating of 94V-0
8. Apply soldermask over bare copper. Soldermask to be per IPC-3514-410, Type B1, Class 3, Color Transparent Black. Vias not to be covered with soldermask.
9. Wrap and/or twist shall not exceed .005 per inch.
10. Remove all burrs and break all sharp edges .015 max.
11. Silkscreen top and bottom side using white non conductive epoxy typ ink.

UNLESS OTHERWISE SPECIFIED
DIMENSIONS ARE IN INCH
DO NOT SCALE DRAWING

TOLERANCES:
.XX+/- .010
.XXX+/- .020
ANGULAR +/- deg 30'

LOOKOUT PORTABLE SECURITY

RF BOARD - 434MHZ

DRAGING BY: Rubens Fluzo Lima	DATE: 04/08/2021	SIZE: C	FSCM NO.	DWG NO. 160-4020	REV A2
APVD BY: Saton Wehaffey	DATE:	SCALE:	SHEET 1 OF 2		