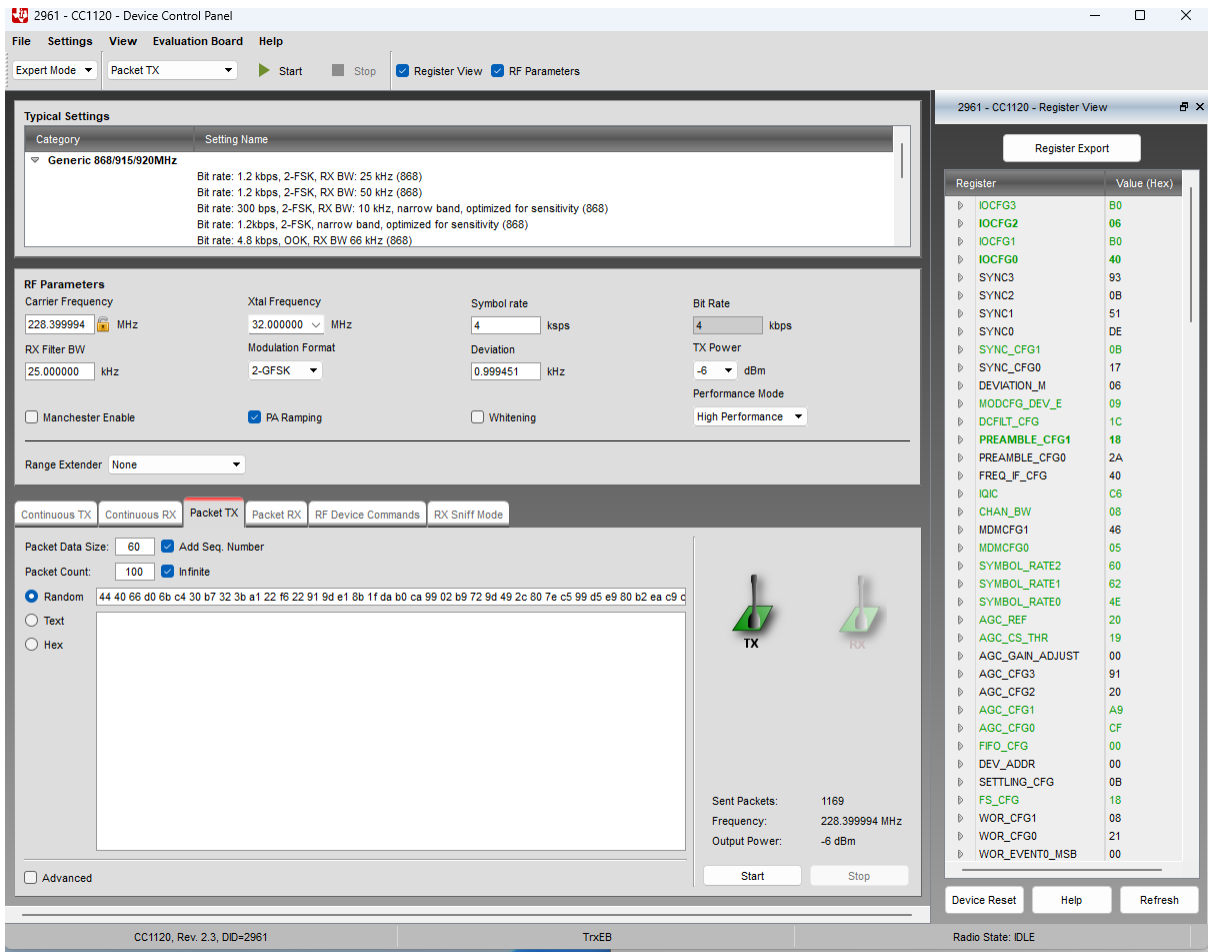


PACKET TX



/******

* SmartRF Studio(tm) Export

*

* Radio register settings specified with C-code

* compatible #define statements.

*

* RF device: CC1120

*

*****/

#ifndef SMARTRF_CC1120_H

#define SMARTRF_CC1120_H

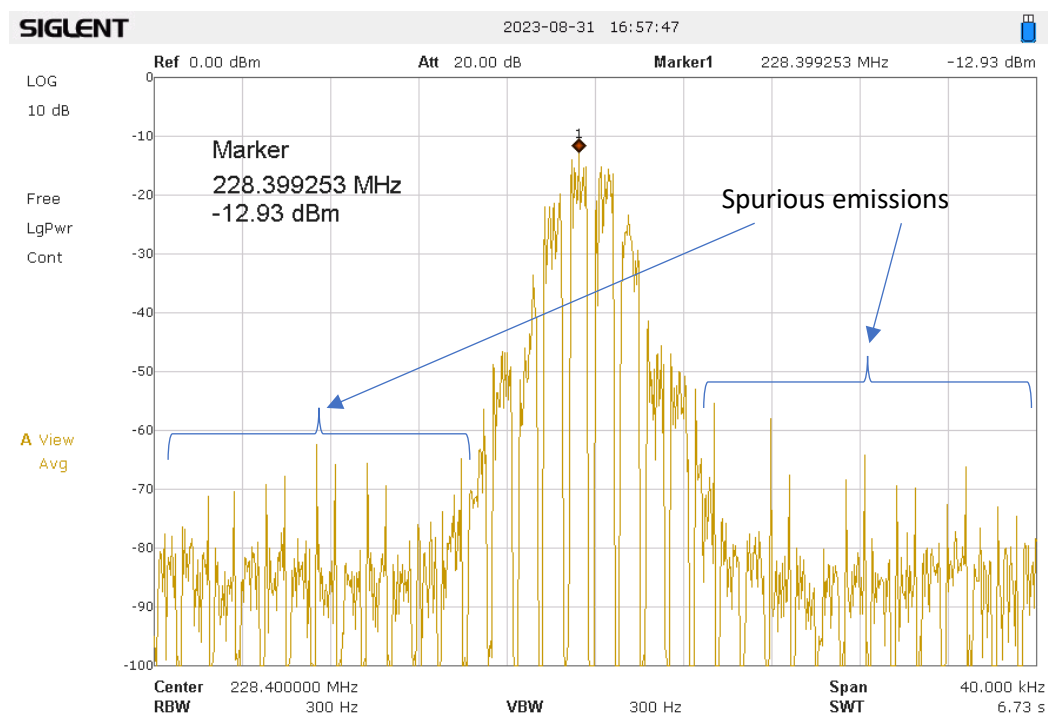
```
#define SMARTRF_RADIO_CC1120

#define SMARTRF_SETTING_IOCFG3    0xB0
#define SMARTRF_SETTING_IOCFG2    0x06
#define SMARTRF_SETTING_IOCFG1    0xB0
#define SMARTRF_SETTING_IOCFG0    0x40
#define SMARTRF_SETTING_SYNC_CFG1  0x08
#define SMARTRF_SETTING_MODCFG_DEV_E 0x09
#define SMARTRF_SETTING_DCFILT_CFG 0x1C
#define SMARTRF_SETTING_PREAMBLE_CFG1 0x18
#define SMARTRF_SETTING_IQIC      0xC6
#define SMARTRF_SETTING_CHAN_BW   0x08
#define SMARTRF_SETTING_MDMCFG0    0x05
#define SMARTRF_SETTING_SYMBOL_RATE2 0x60
#define SMARTRF_SETTING_SYMBOL_RATE1 0x62
#define SMARTRF_SETTING_SYMBOL_RATE0 0x4E
#define SMARTRF_SETTING_AGC_REF    0x20
#define SMARTRF_SETTING_AGC_CS_THR 0x19
#define SMARTRF_SETTING_AGC_CFG1   0xA9
#define SMARTRF_SETTING_AGC_CFG0   0xCF
#define SMARTRF_SETTING_FIFO_CFG   0x00
#define SMARTRF_SETTING_FS_CFG     0x18
#define SMARTRF_SETTING_PKT_CFG0   0x20
#define SMARTRF_SETTING_PA_CFG2    0x4F
#define SMARTRF_SETTING_PA_CFG0    0x7E
#define SMARTRF_SETTING_PKT_LEN    0xFF
#define SMARTRF_SETTING_IF_MIX_CFG  0x00
#define SMARTRF_SETTING_FREQOFF_CFG 0x22
#define SMARTRF_SETTING_FREQ2      0x72
#define SMARTRF_SETTING_FREQ1      0x33
#define SMARTRF_SETTING_FREQ0      0x33
```

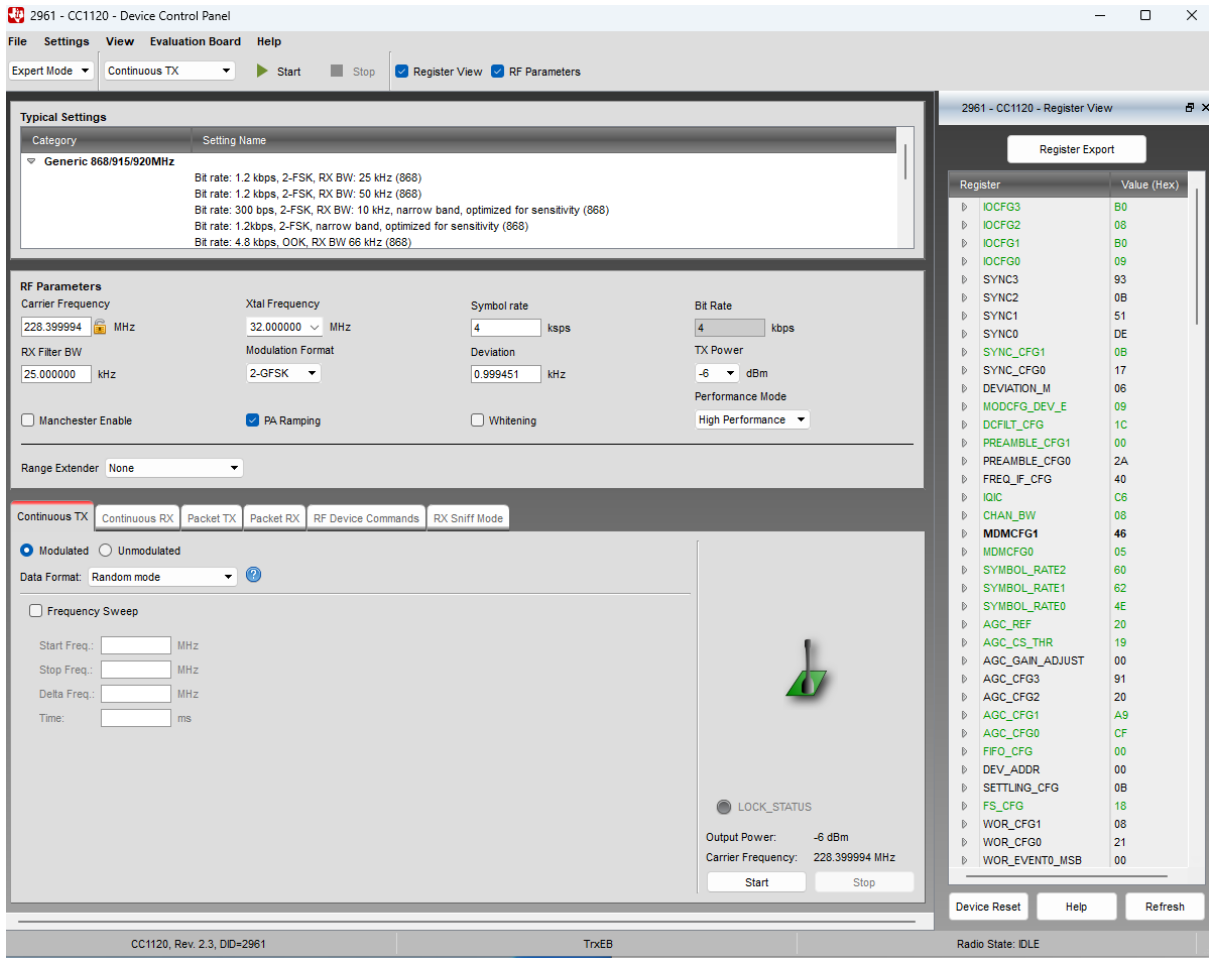
```

#define SMARTRF_SETTING_FS_DIG1    0x00
#define SMARTRF_SETTING_FS_DIG0    0x5F
#define SMARTRF_SETTING_FS_CAL1    0x40
#define SMARTRF_SETTING_FS_CAL0    0x0E
#define SMARTRF_SETTING_FS_DIVTWO  0x03
#define SMARTRF_SETTING_FS_DSM0    0x33
#define SMARTRF_SETTING_FS_DVC0    0x17
#define SMARTRF_SETTING_FS_PFD     0x50
#define SMARTRF_SETTING_FS_PRE     0x6E
#define SMARTRF_SETTING_FS_REG_DIV_CML 0x14
#define SMARTRF_SETTING_FS_SPARE   0xAC
#define SMARTRF_SETTING_FS_VCO0    0xB4
#define SMARTRF_SETTING_XOSC5      0x0E
#define SMARTRF_SETTING_XOSC1      0x03
#define SMARTRF_SETTING_PARTNUMBER 0x48
#define SMARTRF_SETTING_PARTVERSION 0x23
#define SMARTRF_SETTING_MODEM_STATUS1 0x10
#endif

```



CONTINUOUS TX



```

/*****

* SmartRF Studio(tm) Export

*

* Radio register settings specified with C-code

* compatible #define statements.

*

* RF device: CC1120

*

*****/

```

```

#ifndef SMARTRF_CC1120_H
#define SMARTRF_CC1120_H

```

```
#define SMARTRF_RADIO_CC1120

#define SMARTRF_SETTING_IOCFG3    0xB0
#define SMARTRF_SETTING_IOCFG2    0x08
#define SMARTRF_SETTING_IOCFG1    0xB0
#define SMARTRF_SETTING_IOCFG0    0x09
#define SMARTRF_SETTING_SYNC_CFG1  0x0B
#define SMARTRF_SETTING_MODCFG_DEV_E 0x09
#define SMARTRF_SETTING_DCFILT_CFG 0x1C
#define SMARTRF_SETTING_PREAMBLE_CFG1 0x00
#define SMARTRF_SETTING_IQIC      0xC6
#define SMARTRF_SETTING_CHAN_BW   0x08
#define SMARTRF_SETTING_MDMCFG0   0x05
#define SMARTRF_SETTING_SYMBOL_RATE2 0x60
#define SMARTRF_SETTING_SYMBOL_RATE1 0x62
#define SMARTRF_SETTING_SYMBOL_RATE0 0x4E
#define SMARTRF_SETTING_AGC_REF    0x20
#define SMARTRF_SETTING_AGC_CS_THR 0x19
#define SMARTRF_SETTING_AGC_CFG1   0xA9
#define SMARTRF_SETTING_AGC_CFG0   0xCF
#define SMARTRF_SETTING_FIFO_CFG   0x00
#define SMARTRF_SETTING_FS_CFG     0x18
#define SMARTRF_SETTING_PKT_CFG2   0x06
#define SMARTRF_SETTING_PKT_CFG1   0x00
#define SMARTRF_SETTING_PKT_CFG0   0x40
#define SMARTRF_SETTING_PA_CFG2    0x4F
#define SMARTRF_SETTING_PA_CFG0    0x7E
#define SMARTRF_SETTING_IF_MIX_CFG  0x00
#define SMARTRF_SETTING_FREQOFF_CFG 0x22
#define SMARTRF_SETTING_FREQ2      0x72
#define SMARTRF_SETTING_FREQ1      0x33
```

```

#define SMARTRF_SETTING_FREQ0      0x33
#define SMARTRF_SETTING_FS_DIG1    0x00
#define SMARTRF_SETTING_FS_DIG0    0x5F
#define SMARTRF_SETTING_FS_CAL1    0x40
#define SMARTRF_SETTING_FS_CAL0    0x0E
#define SMARTRF_SETTING_FS_DIVTWO  0x03
#define SMARTRF_SETTING_FS_DSM0    0x33
#define SMARTRF_SETTING_FS_DVC0    0x17
#define SMARTRF_SETTING_FS_PFD      0x50
#define SMARTRF_SETTING_FS_PRE      0x6E
#define SMARTRF_SETTING_FS_REG_DIV_CML 0x14
#define SMARTRF_SETTING_FS_SPARE    0xAC
#define SMARTRF_SETTING_FS_VCO0     0xB4
#define SMARTRF_SETTING_XOSC5       0x0E
#define SMARTRF_SETTING_XOSC1       0x03
#define SMARTRF_SETTING_PARTNUMBER  0x48
#define SMARTRF_SETTING_PARTVERSION 0x23
#define SMARTRF_SETTING_MODEM_STATUS1 0x10
#endif

```

