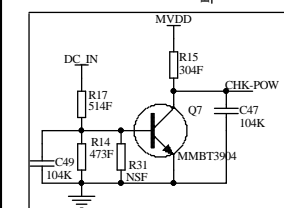
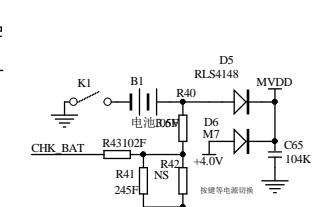
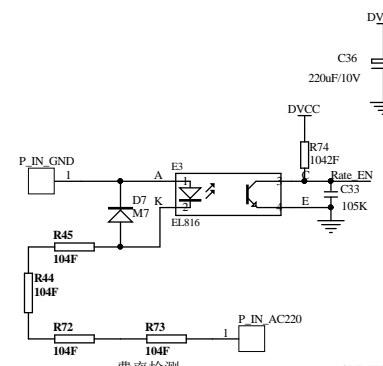
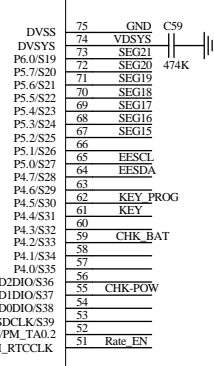
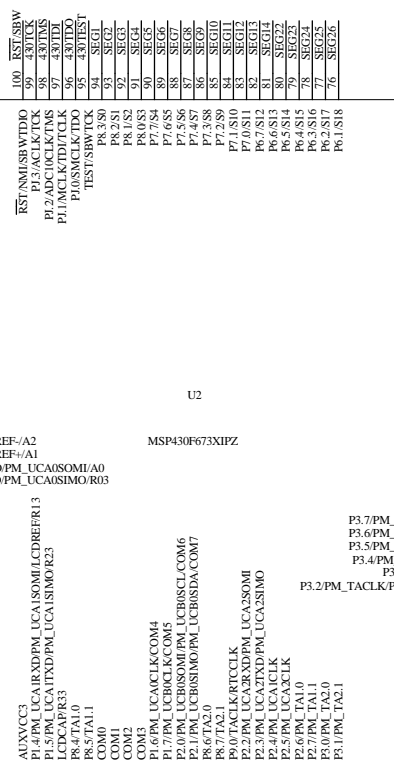
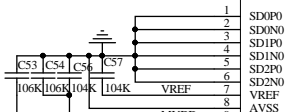
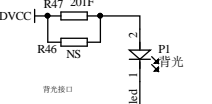
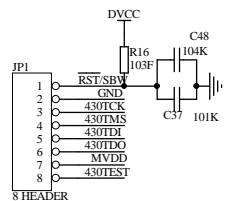
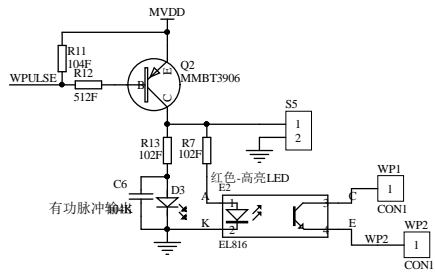
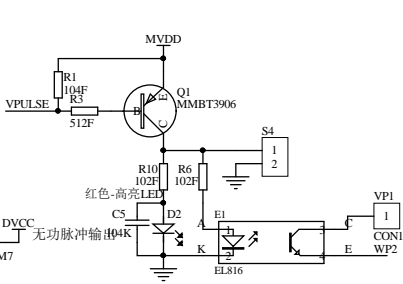
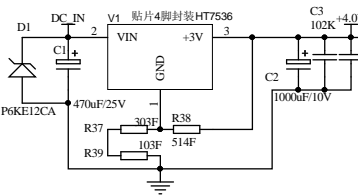
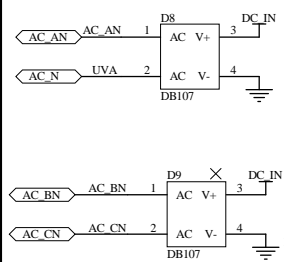
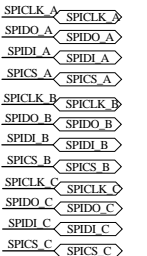
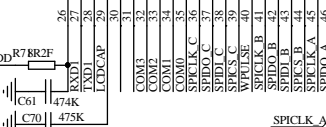
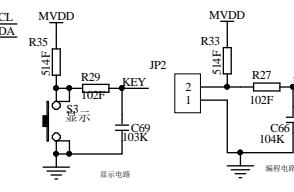
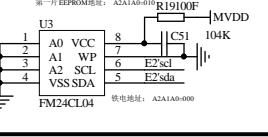
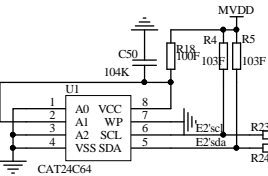


电源说明:  
1. DVCC 交流电源供电状态下存在  
2. MVDD 交流电源供电与电瓶供电均存在  
3. DVCC\_A, DVCC\_B, DVCC\_C为SPI通讯时 A, B, C路的光耦电源



主路掉电检测电路



h 1 0 9 e f 0 e 9 e i N C 6				(- [W e a g			
%	i	oXúb	h Qæ	%	i	oXúb	h Qæ
h!	lù		[i [š				
[i	h8		eà g				20150605

HL8.067.395

u5l Sÿ Vp

Vth 7h ° 1' 1' kOÖ

S	Qq	1	-	{,	1	-
---	----	---	---	----	---	---

SN'ENêh -Æ'æiN'ýg -PQISø