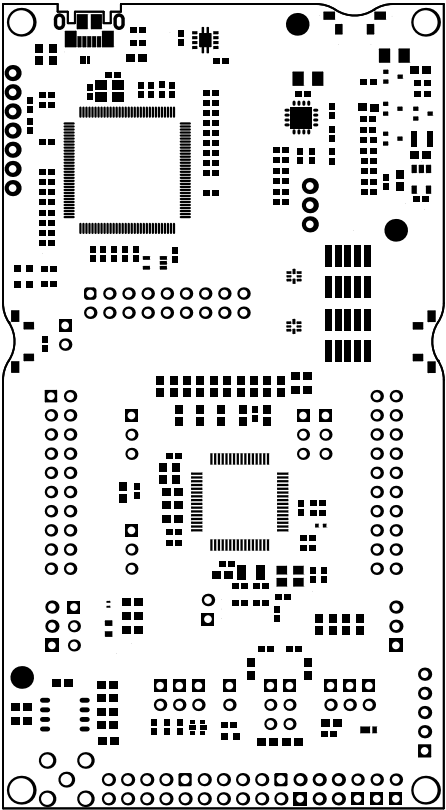
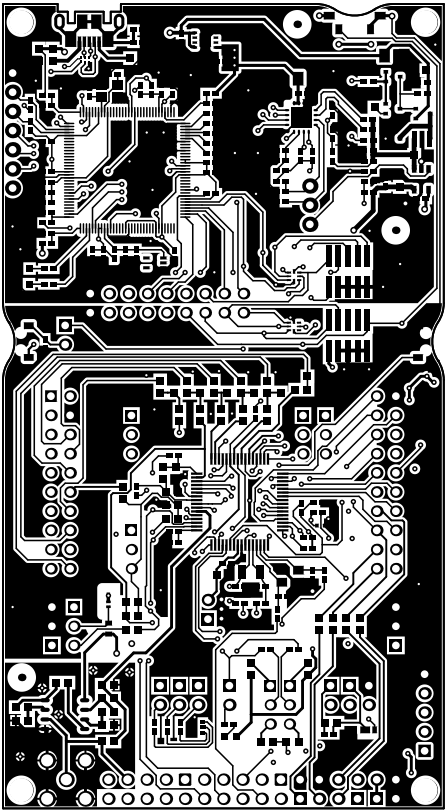


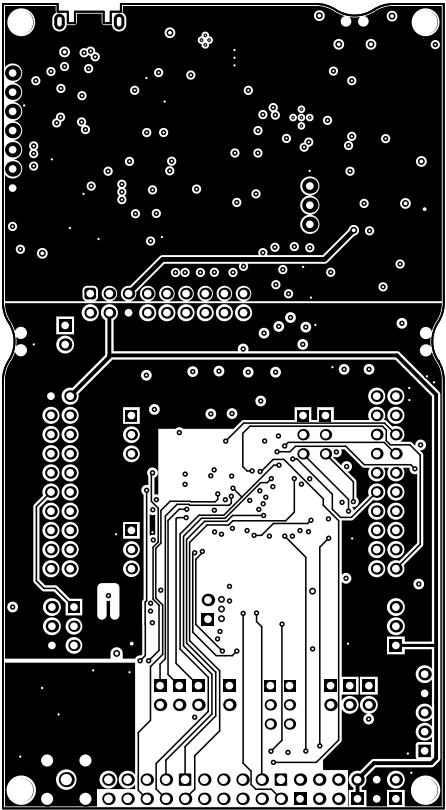
ALL ARTWORK VIEWED FROM TOP SIDE	BOARD #:	MCU088	REV:	A	SUN REV:	690594e486c650fcb911299d70bae985b7b36f8a (Locally Modified)
LAYER NAME =	Top Overlay					
	TID #:	N/A				
PLOT NAME =	Top Overlay		GENERATED : 2/14/2023 10:39:04 AM			TEXAS INSTRUMENTS



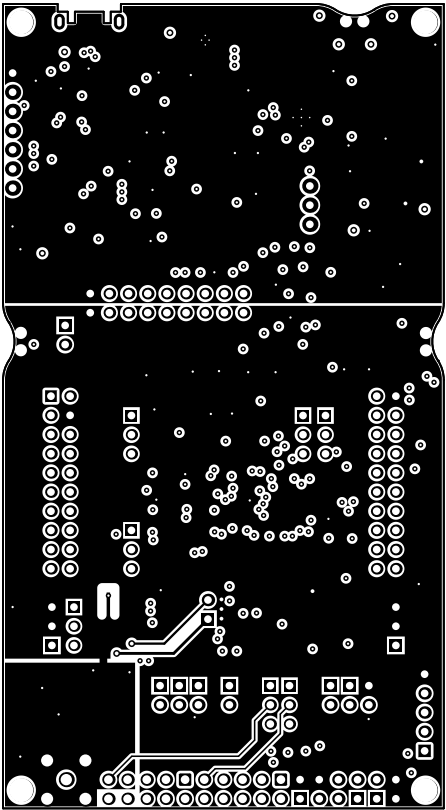
ALL ARTWORK VIEWED FROM TOP SIDE	BOARD #:	MCU098	REV:	A	SUN REV:	69053fa6489c6601db5f1299d70bae5987b36f8a [Locally Modified]
LAYER NAME = Top Solder	TID #:	N/A				
PLOT NAME = Top Solder Mask	GENERATED :	2/14/2023	10:39:05 AM	TEXAS INSTRUMENTS		



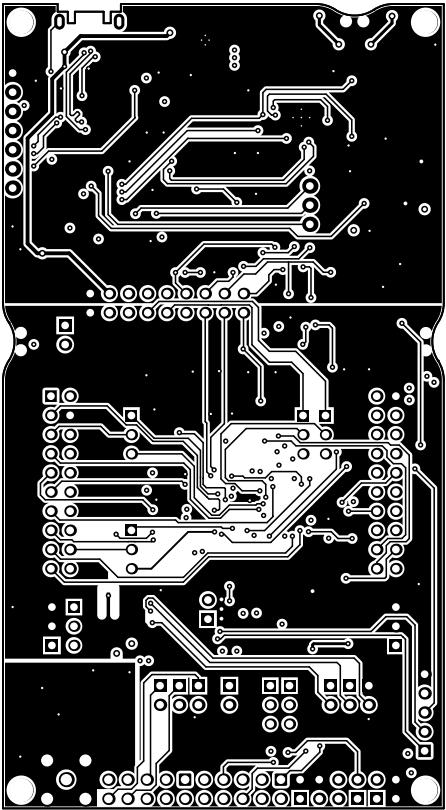
ALL ARTWORK VIEWED FROM TOP SIDE	BOARD #:	MCU098	REV:	A	SUN REV:	69053fa6489c6601db511299d70bae5987b36f8a [Locally Modified]
LAYER NAME = Top Layer	TID #:	N/A				
PLOT NAME = Top Layer	GENERATED :	2/14/2023	10:39:05 AM	TEXAS INSTRUMENTS		



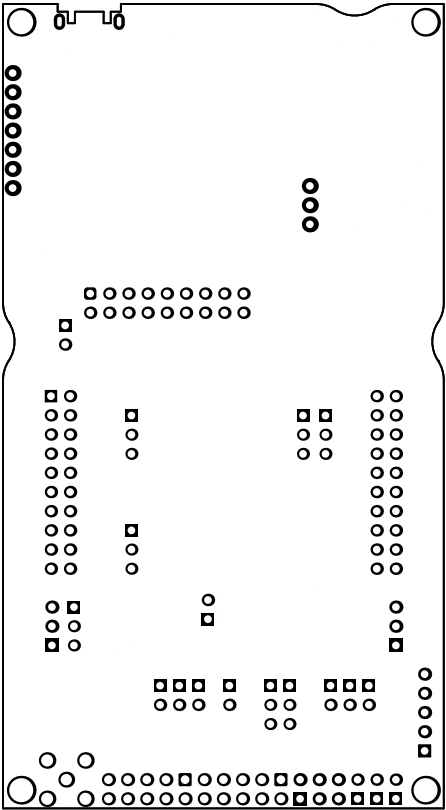
ALL ARTWORK VIEWED FROM TOP SIDE	BOARD #:	MCU098	REV:	A	SUN REV:	69053fa6489c6601db511299d70bae5987b36f8a [Locally Modified]
LAYER NAME =	UCC Layer	TID #:	N/A			
PLOT NAME =	Signal Layer 1	GENERATED :	2/14/2023	10:39:05 AM	TEXAS INSTRUMENTS	



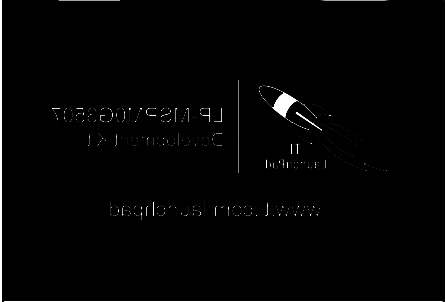
ALL ARTWORK VIEWED FROM TOP SIDE	BOARD #:	MCU098	REV:	A	SUN REV:	69053fa6489c6501db511299d70bae5987b36f8a [Locally Modified]
LAYER NAME =	GND Layer	TID #:	N/A			
PLOT NAME =	Signal Layer 2	GENERATED :	2/14/2023	10:39:05 AM	TEXAS INSTRUMENTS	



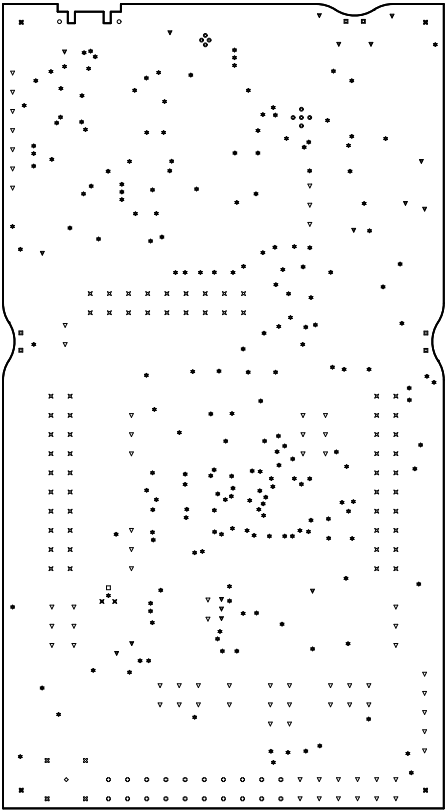
ALL ARTWORK VIEWED FROM TOP SIDE	BOARD #:	MCU098	REV:	A	SUN REV:	69053fa6489c6601db511299d70bae5987b36f8a [Locally Modified]
LAYER NAME = Bottom Layer	TID #:	N/A				
PLOT NAME = Bottom Layer	GENERATED :	2/14/2023	10:39:05 AM	TEXAS INSTRUMENTS		



ALL ARTWORK VIEWED FROM TOP SIDE	BOARD #:	MCU098	REV:	A	SUN REV:	69053fa6489c6601db511299d70bae5987b36f8a [Locally Modified]
LAYER NAME = Bottom Solder	TID #:	N/A				
PLOT NAME = Bottom Solder Mask	GENERATED :	2/14/2023	10:39:05 AM	TEXAS INSTRUMENTS		



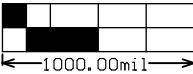
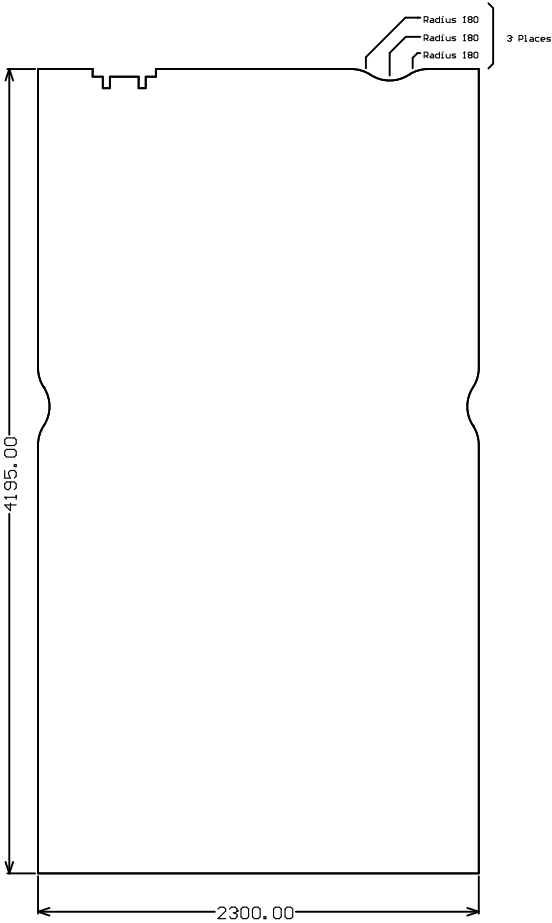
ALL ARTWORK VIEWED FROM TOP SIDE		BOARD #:	MCU098	REV:	A	SUN REV:	69053fa6489cc650fcb5f1299d20bae5897b36f8a [Loc
LAYER NAME = Bottom Overlay		TID #:	N/A				
PLOT NAME = Bottom Overlay		GENERATED :	2/14/2023		10:33:05 AM		TEXAS INSTRUMENTS



Symbol	Quantity	Finished Hole Size	Plated	Hole Type	Drill Layer Pair	Hole Tolerance	Hole Length
⊠	6	35.43mil (0.900mm)		Round	Top Layer - Bottom Layer		-
⊞	4	125.00mil (3.175mm)	NPTH	Round	Top Layer - Bottom Layer		-
⊙	8	7.87mil (0.200mm)	PTH	Round	Top Layer - Bottom Layer		-
*	211	12.00mil (0.305mm)	PTH	Round	Top Layer - Bottom Layer		-
∇	17	20.00mil (0.508mm)	PTH	Round	Top Layer - Bottom Layer		-
▽	72	40.00mil (1.016mm)	PTH	Round	Top Layer - Bottom Layer		-
⊗	88	40.16mil (1.020mm)	PTH	Round	Top Layer - Bottom Layer		-
⊗	20	48.29mil (1.190mm)	PTH	Round	Top Layer - Bottom Layer		-
◇	1	58.06mil (1.500mm)	PTH	Round	Top Layer - Bottom Layer		-
⊞	4	62.98mil (1.600mm)	PTH	Round	Top Layer - Bottom Layer		-
□	1	21.00mil (0.533mm)	NPTH	Slot	Top Layer - Bottom Layer		87.00mil (2.210mm)
⊞	2	21.00mil (0.533mm)	NPTH	Slot	Top Layer - Bottom Layer		162.00mil (4.115mm)
○	2	23.62mil (0.600mm)	PTH	Slot	Top Layer - Bottom Layer		51.18mil (1.300mm)
1407 Total							

Slot definitions : Routed Path Length = Calculated from tool start centre position to tool end centre position.
Hole Length = Routed Path Length + Tool Size = Slot length as defined in the PCB layout

ALL ARTWORK VIEWED FROM TOP SIDE	BOARD #: MCU098	REV: A	SUN REV: 69053fa6489c6501db5f1299d70bae5897b36f8a (Locally Modified)
LAYER NAME = Drill Drawing	TID #: N/A		
PLOT NAME = Drill Drawing	GENERATED : 2/14/2023 10:39:06 AM	TEXAS INSTRUMENTS	



ALL ARTWORK VIEWED FROM TOP SIDE	BOARD #:	MCU098	REV:	A	SUN REV:	69053fa6489c6601db5f1299d70bae5987b36f8a [Locally Modified]
LAYER NAME = M2 Board Dimensions	TID #:	N/A				
PLOT NAME = Board Dimensions	GENERATED :	2/14/2023	10:39:08 AM	TEXAS INSTRUMENTS		