



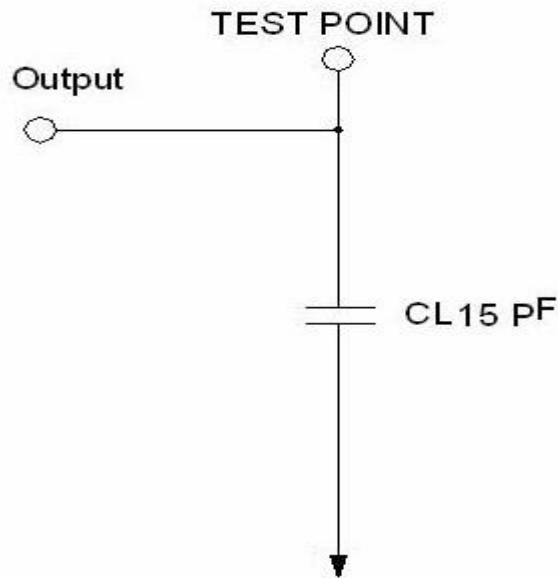
● **ELECTRICAL PARAMETERS**

Note 1: include 25°C tolerance, operating temperature range, input voltage change, load change, shock and vibration.

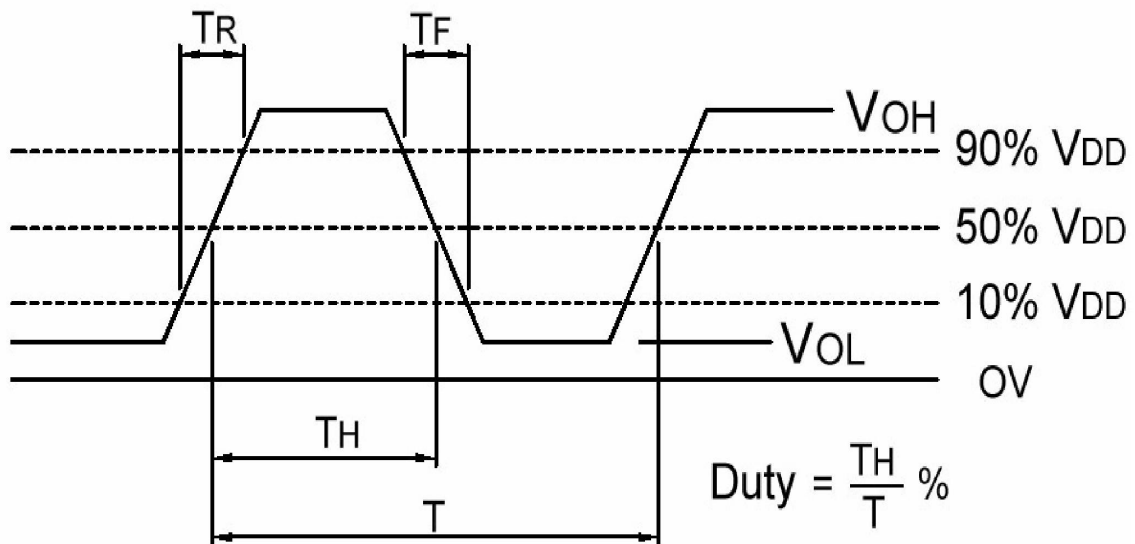
No.	Characteristic	Limits	Remark
1	Nominal Frequency	8.000MHz	
2	Supply voltage	3.3VDC ± 10%	
3	Frequency Stability	± 20ppm	tolerance 25°C
4	Aging	± 3ppm	Frequency drift in first year
5	Temperature Drift	± 30ppm	@-40~85°C
6	Operating Temperature Range	-40°C~+85°C	The operating temperature range over which the frequency stability is measured
7	Storage Temperature Range	-55°C~+125°C	
8	Current	15mA	At maximum supply voltage
9	Output Waveform	CMOS	
10	Output Load	15pF	
11	Current consumption	10 mA Max.	
12	Duty Cycle	45% Min.	
		55% Max.	
13	Start Time	5 mSec max	
	Transition Time : Rise/Fall Time	5 nSec max	
14	Jitter	40 pSec Max.	Period Jitter(Pk-Pk)
15	Output Level	Output High(Logic "1")	90%Vdd (V) Min.
		Output Low(Logic "0")	10%Vdd (V) Max.
16	Tri-State	Output Active	1.26 or Floating Min.
		Output inHigh-Impedance state	0.54Vdd Max.



TEST CIRCUIT (CMOS LOAD)



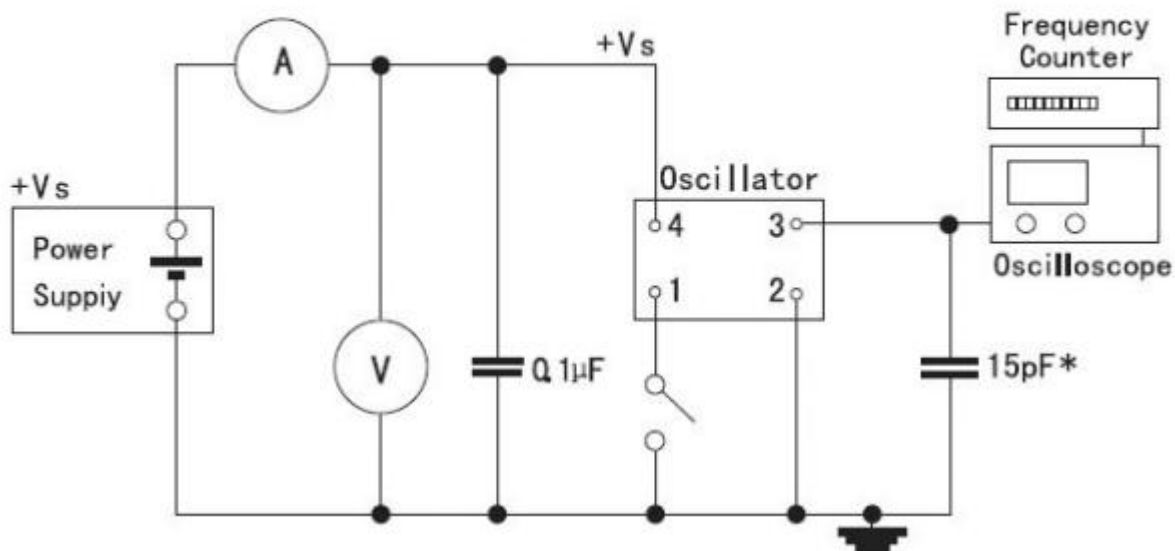
OUTPUT WAVEFORM (CMOS LOAD)





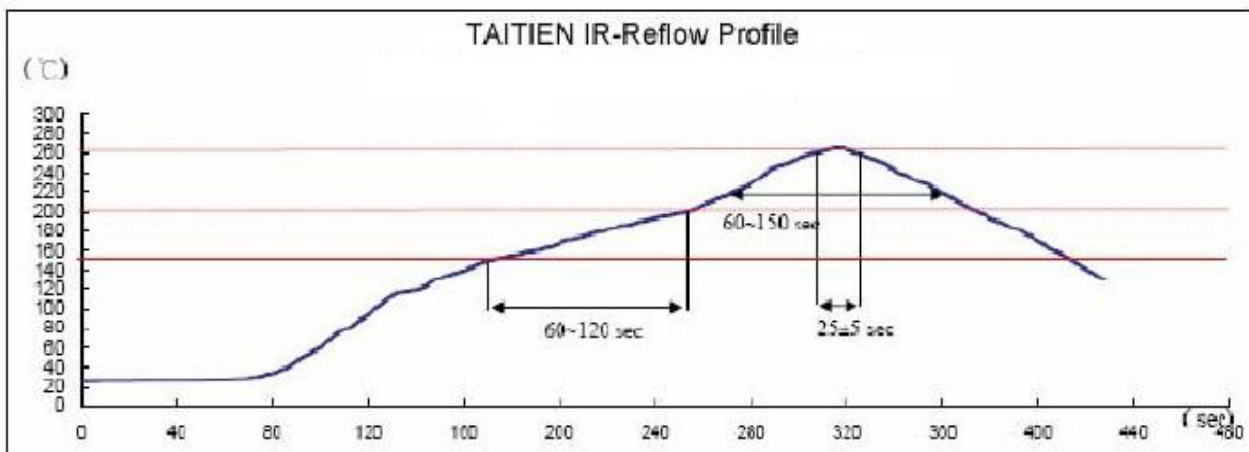
测试电路图

TEST CIRCUIT



RECOMMENDED IR REFLOW PROFILE

IR REFLOW PROFILE OF CERAMIC SMD PRODUCTS FOR Pb FREE PROCESS



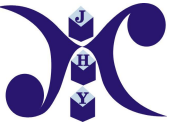
IR-Reflow Test

Reference Standard : JEDEC-STD 020

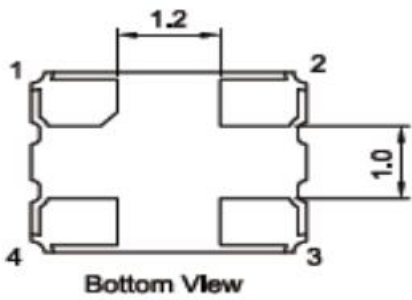
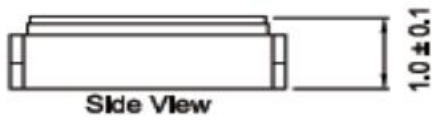
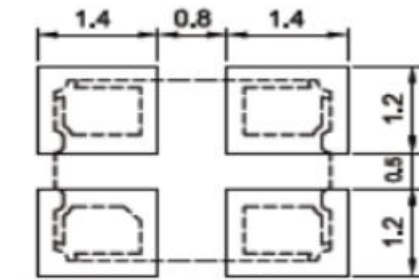
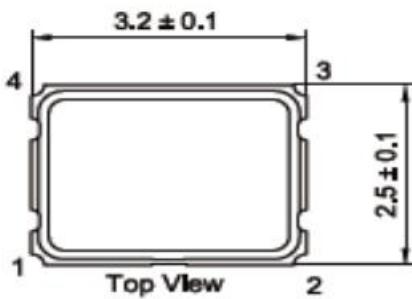
Test Conditions: Pre-heating : 150°C to 200 °C, 60~120 sec

Heating : 217 °C , 60~150 sec

Peak Temperature : 260±5 °C, 25±5 sec



● Outline Dimensions (unit: mm)

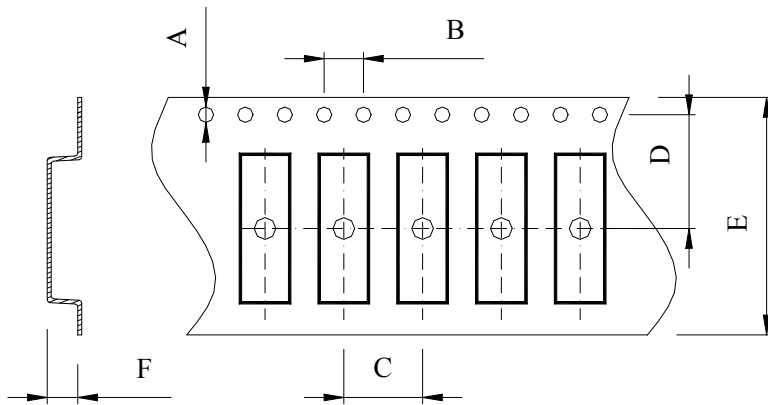


Pin	Connection
1	Tri-state
2	GND
3	Output
4	V_{DD}



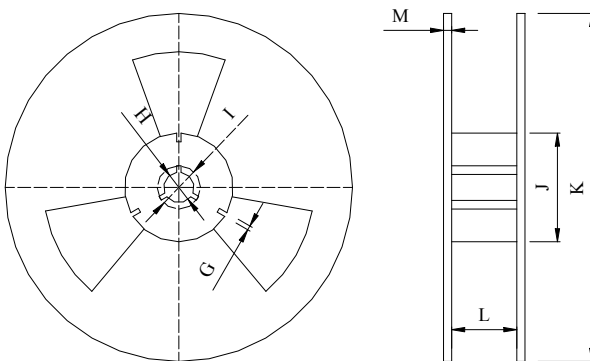
● PACKAGE

Tape Dimensions(unit : mm)



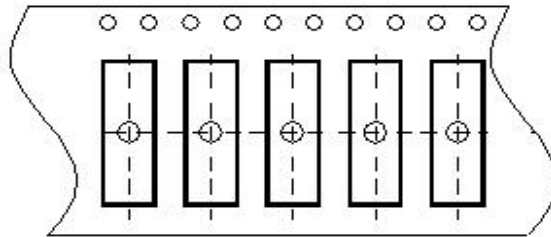
A	B	C	D	E	F
1.50	4.0	8.0	5.5	12.0	1.5

Reel Dimensions(unit: mm)



G	H	I	J	K	L	M
2.5	13.5	21.6	60.0	178	13.5	1.6

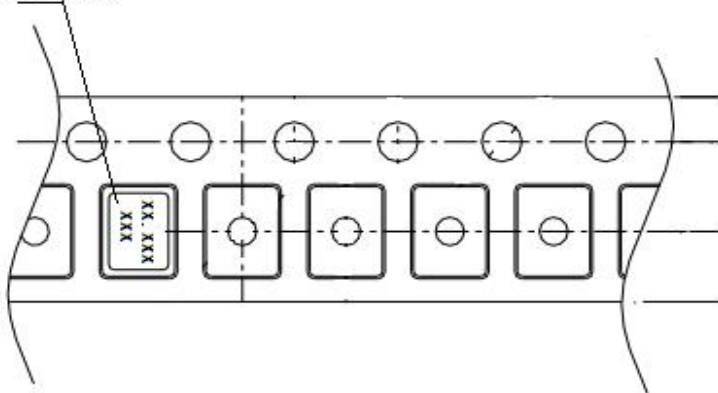
*3000pcs/Reel



User Direction of Feed



Directionmark

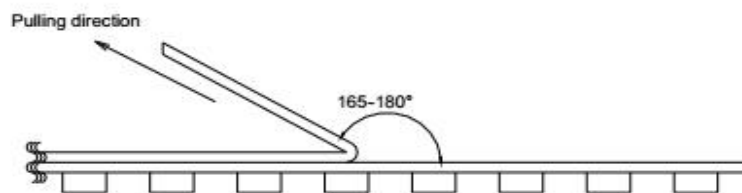


User Direction of Feed

When a tape end is taken out to the front, sprocket holes becomes right hand side.

Peel strength

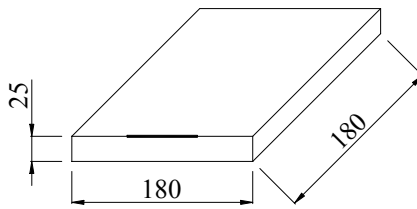
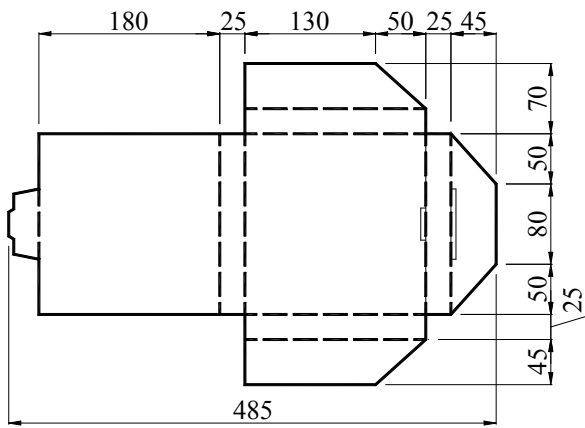
Pulling angle 165~180°, pulling speed at 300mm/min, strength should be 0.2~0.7N.





SHEN ZHEN JINGHUA CRYSTAL ELECTRONIC CO., LTD

Carton Dimension (unit : mm)



1 reel = 1 Inner box

