

Nota 1: C9 y C10 paso de 10n a 47n, eso me da una frecuencia de corte de aproximadamente 1400Hz, con J3 colocado

Title		
Caudalimetro FM-500 v1		
Size	Document Number	Rev
A4	Entrada universal	0
Date:	Tuesday, December 17, 2019	Sheet 1 of 4

V1R2R0:  
-  
V1R2R1:  
-  
V1R2R2:  
-  
V1R2R3:  
-

V1R3R1:  
-

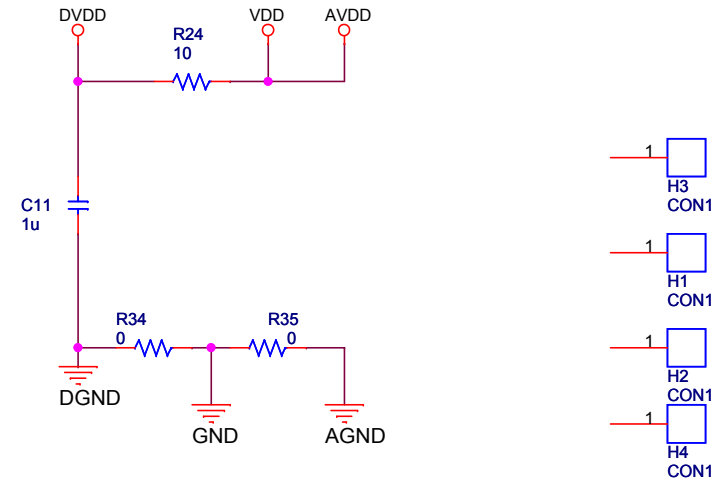
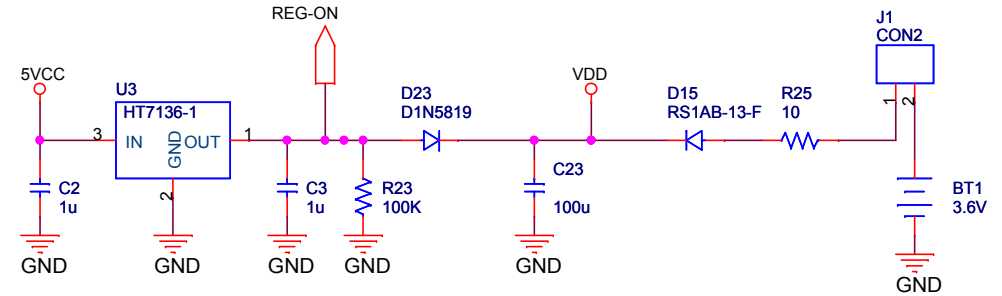
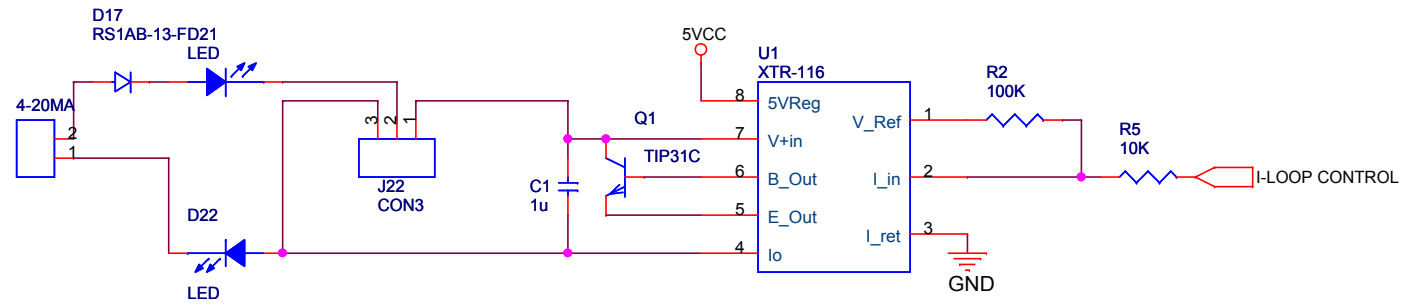
V1 R4 R1 - CAMBIOS CON RESPECTO A V1R3R1  
- R25 NUEVO VALOR 0 OHMS -> CORTO  
- SE MOVIO J1  
- SE ADREGO D17 - ENTRADA TOLERA INVERSION DE ALIMENTACION  
- NO SE COLOCAN LOS TOUCH SWITCH  
-

V1 R4 R2  
-

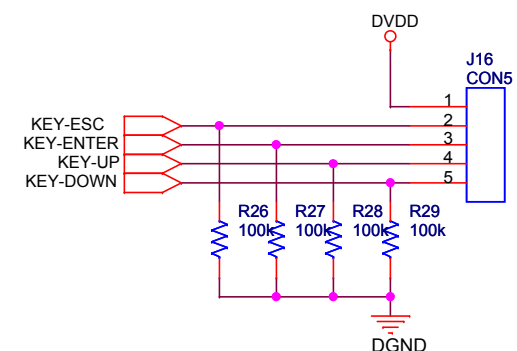
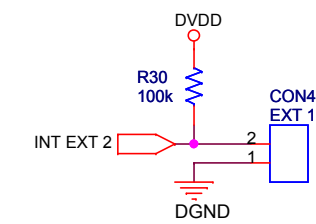
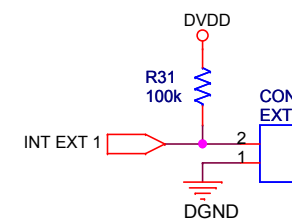
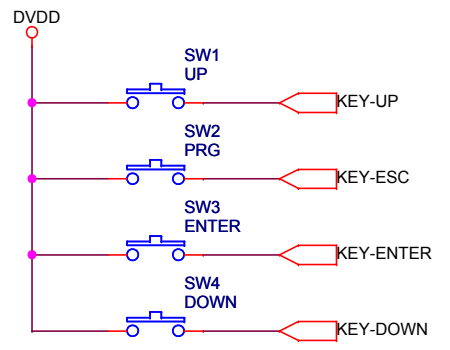
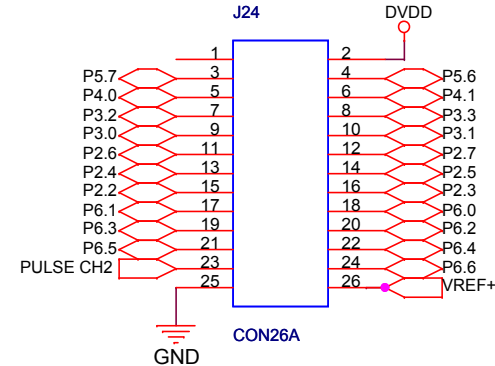
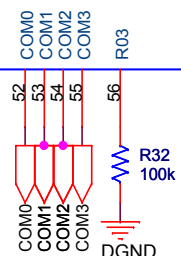
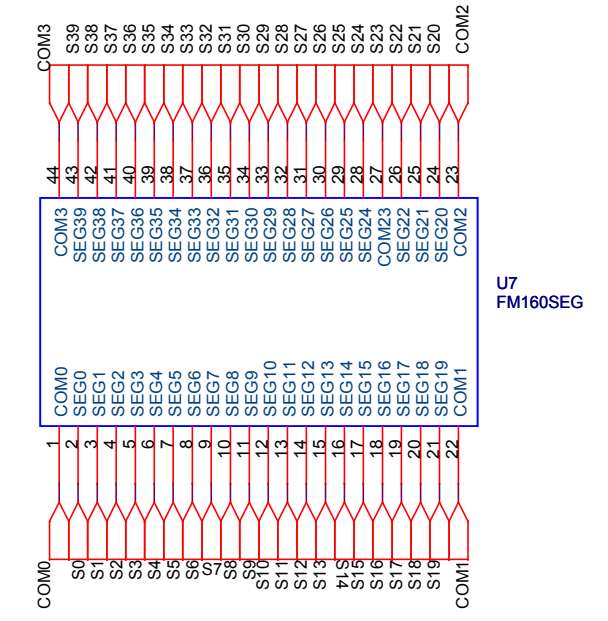
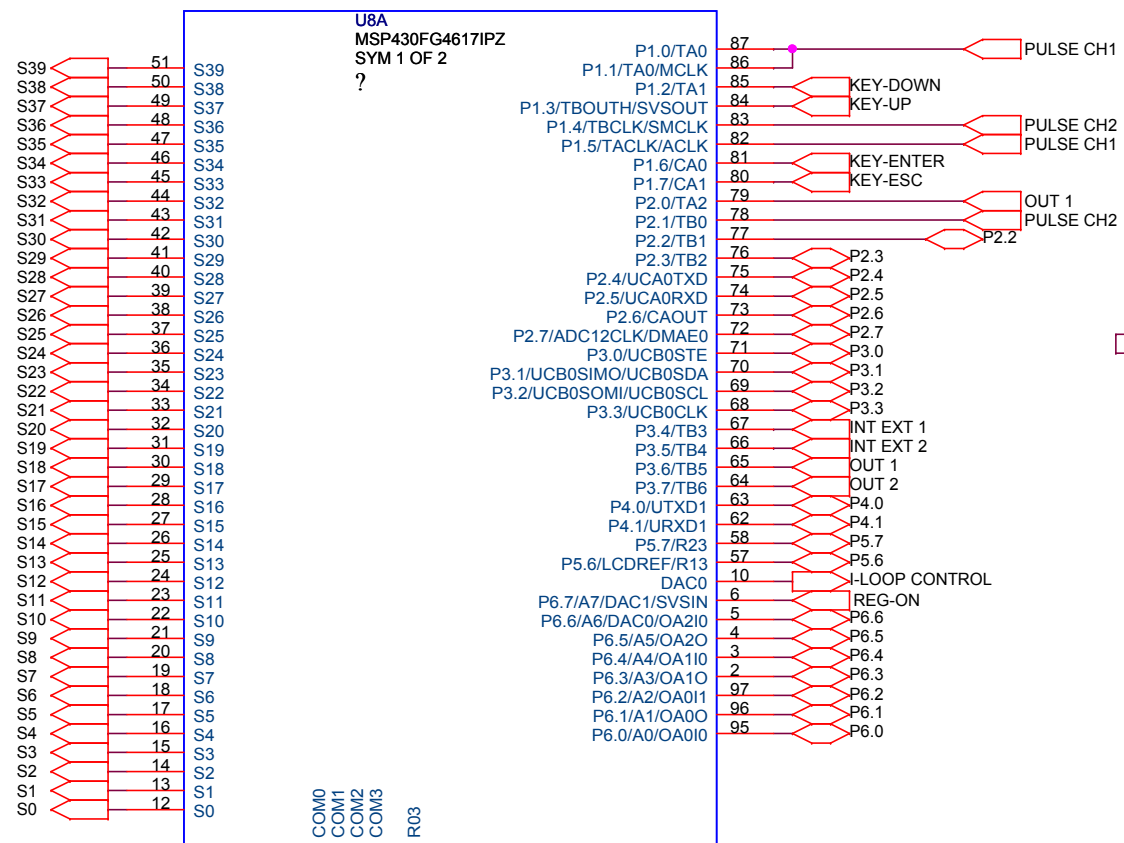
V1 R4 R8:  
- J11 cambia de lugar en el PCB  
- D15 cambia a RS1AB-13-F  
- D17 cambia a RS1AB-13-F

V1 R4 R2 R8.1  
- Remover D23 MANUALMETE

V1 R4 R9  
- R23 CAMBIA A 100K  
- U9 Y U10 CAMBIAN A TLP372  
- R33 Y R36 CAMBIAN A 2.2K

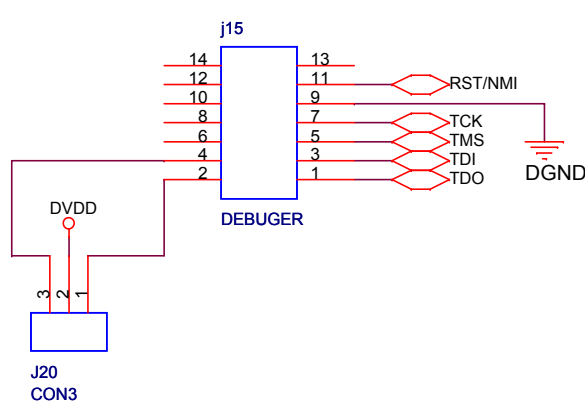
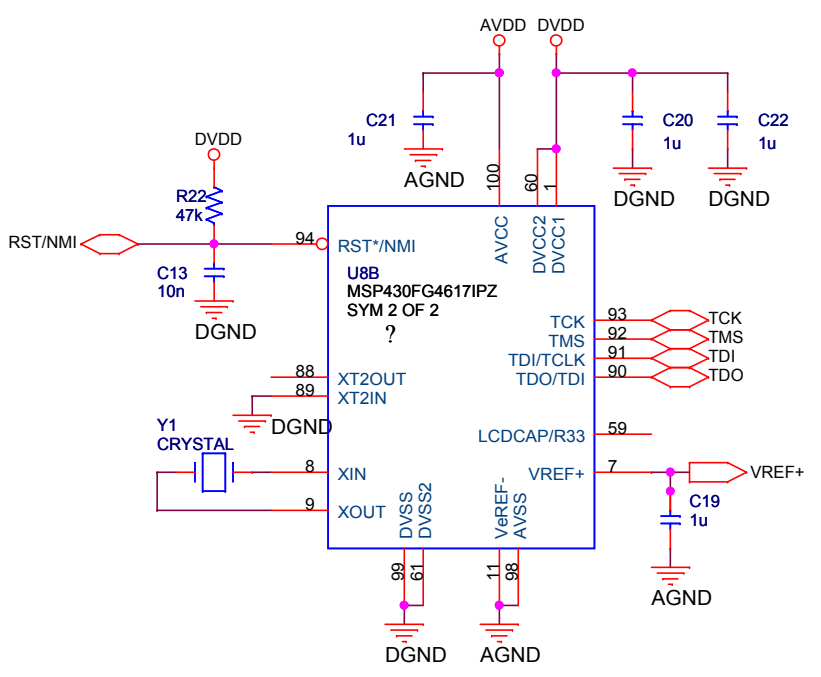


Title		
Caudalimetro FM-500 v1		
Size	Document Number	Rev
A4	FM-500 fuente de alimentacion	0
Date:	Friday, December 20, 2019	Sheet 1 of 4



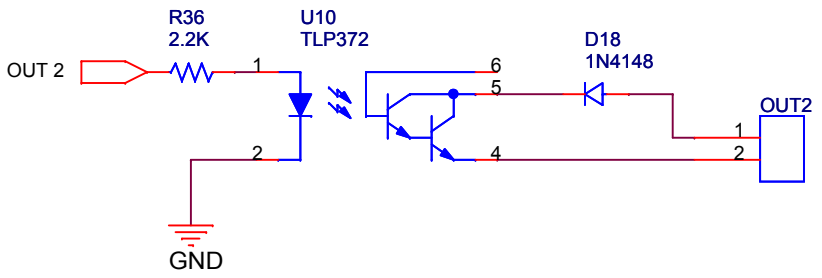
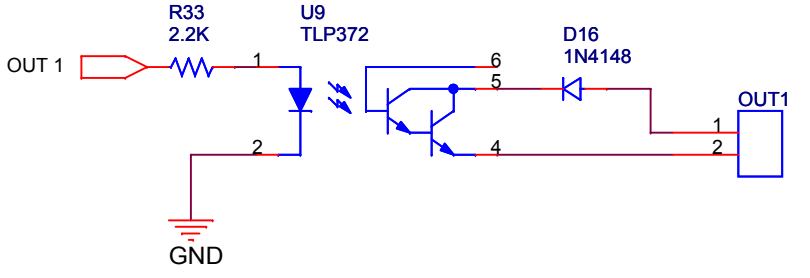
Cambio realizado desde la ultima construccion, distribucion del teclado.

Title		
Caudlimetro FM-500 v1		
Size	Document Number	Rev
A4	msp430 1	0
Date:	Saturday, September 09, 2017	Sheet 1 of 4



Title		
Caudalimetro FM-500 v1		
Size	Document Number	Rev
A4	msp430 2	0
Date:	Saturday, September 09, 2017	Sheet 1 of 4

TLP372 - IMAX 60 mA



Title		
Caudalimetro FM-500 v1		
Size	Document Number	Rev
A	<Doc>	0
Date:	Monday, December 16, 2019	Sheet 1 of 1