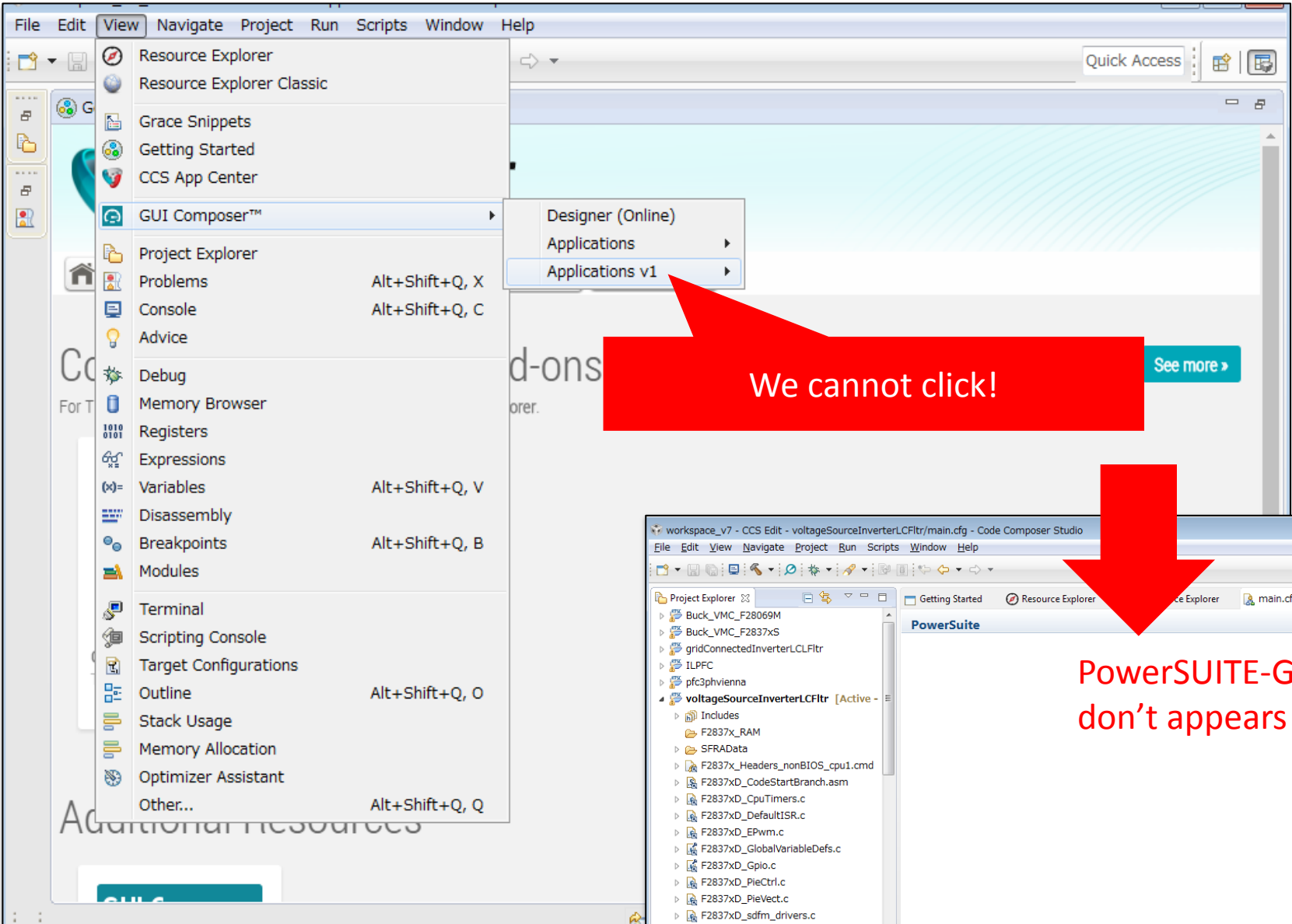
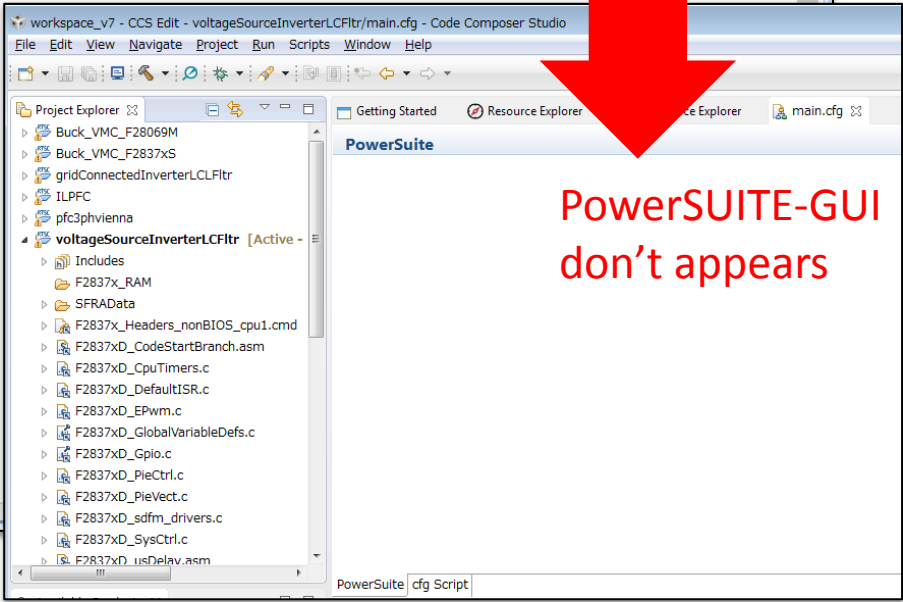


GUI Composer install was done from App Center.

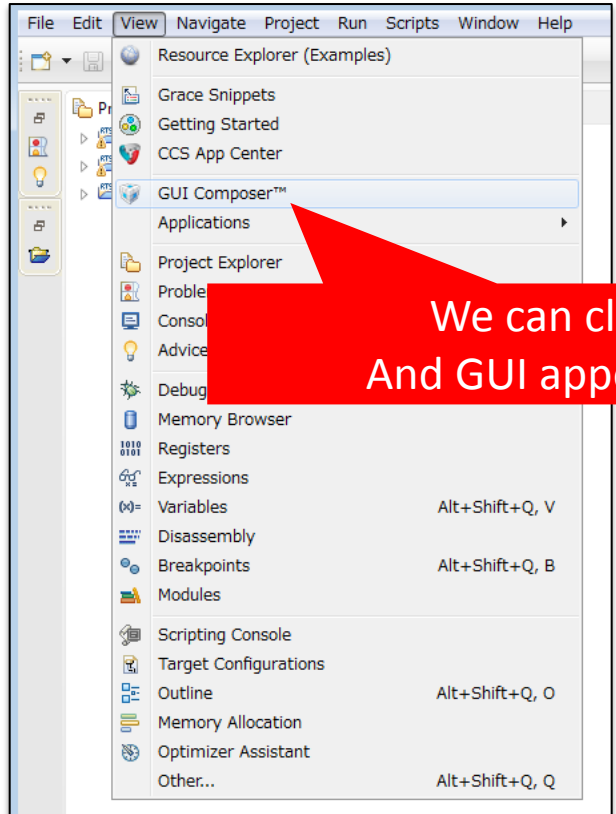
The screenshot displays the CCS App Center interface within a software application window. The window title bar includes menus for File, Edit, View, Navigate, Project, Run, Scripts, Window, and Help. The browser tabs show 'Getting Started', 'CCS App Center', and 'TI Resource Explorer'. The main content area features the 'App Center Texas Instruments' logo and a search bar with the text 'gui'. Below the search bar, there is a section titled 'Code Composer Studio Add-ons' with a 'See more >' button. A sub-section for 'GUI Composer Runtime v1, run custom GUIs created with GCv1.' is visible, including a 'Read More' button and an 'Up to Date' status indicator. At the bottom, there is an 'Additional Resources' section with a 'See more >' button and a 'GUI Composer' logo.



We cannot click!



PowerSUITE-GUI don't appears



We can click.
And GUI appears ->

