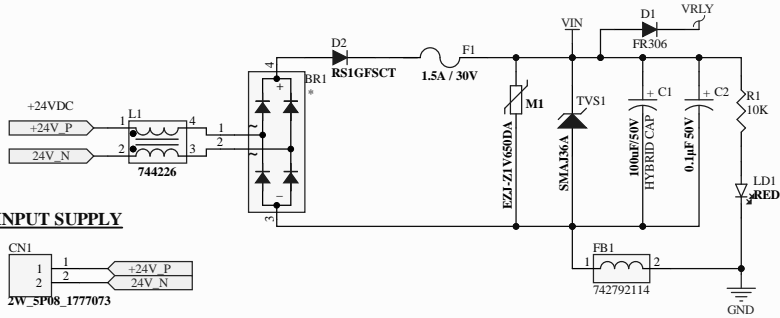
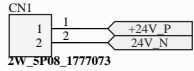


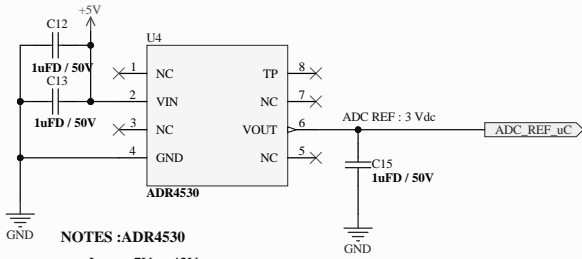
UNREGULATED POWER SUPPLY CKT



INPUT SUPPLY



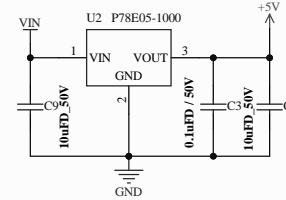
ADC REFERENCE CKT FOR MCU



NOTES :ADR4530

Input : 7V to 42V
 Output : +3 V
 Current rating : +10 mA source/-10 mA sink
 Output Accuracy : ±0.02%
 Application: µC AVDD supply

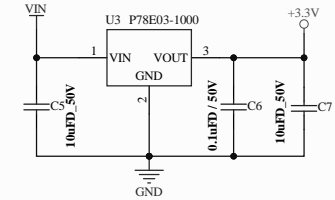
+5V REGULATED POWER SUPPLY



NOTES : P78E05-1000

Input : 7 Vdc to 36Vdc
 Output : 5Vdc
 Current rating : 1A
 Load Regulation : 0.4 %
 Output accuracy: ±2% & Efficiency: 90%
 Application:
 1) -5V regulator circuit
 2) To OP-amps +ve
 3) To ADC reference Circuit
 4) To USB Circui

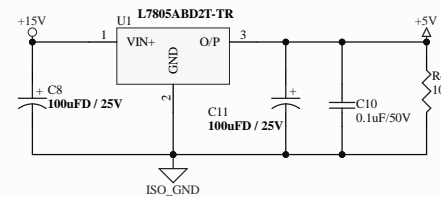
+3.3V REGULATED POWER SUPPLY



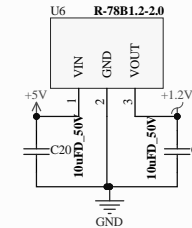
NOTES : P78E03-1000

Input : 7 Vdc to 36Vdc
 Output : 3.3 Vdc
 Current rating : 1A
 Load Regulation : 0.4 %
 Output accuracy: ±2% & Efficiency: 85%
 Application:
 1) Power supply for the µC
 2) Can tranceiver ckt
 3) RS232 ckt
 4) Indication LED's
 5) RS485 ckt
 6) Ethernet Ckt
 7) Real Time Clock Ckt
 8) NVRAM ckt

CAN ISO POWER SUPPLY SECTION



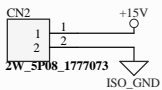
+1.2V REGULATED POWER SUPPLY



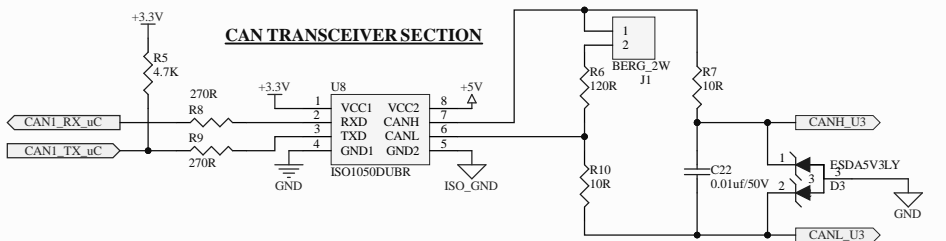
NOTES : R-78B1.2-2.0

Input : 4.75Vdc to 32Vdc
 Output : +1.2Vdc
 Current rating : 2A
 Load Regulation : 1.5mV
 Efficiency: 87%
 Temp. range : -40 to 70°C
 Application : To uC VDD

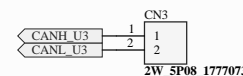
CAN ISO POWER SUPPLY CONNECTOR



CAN TRANSCEIVER SECTION



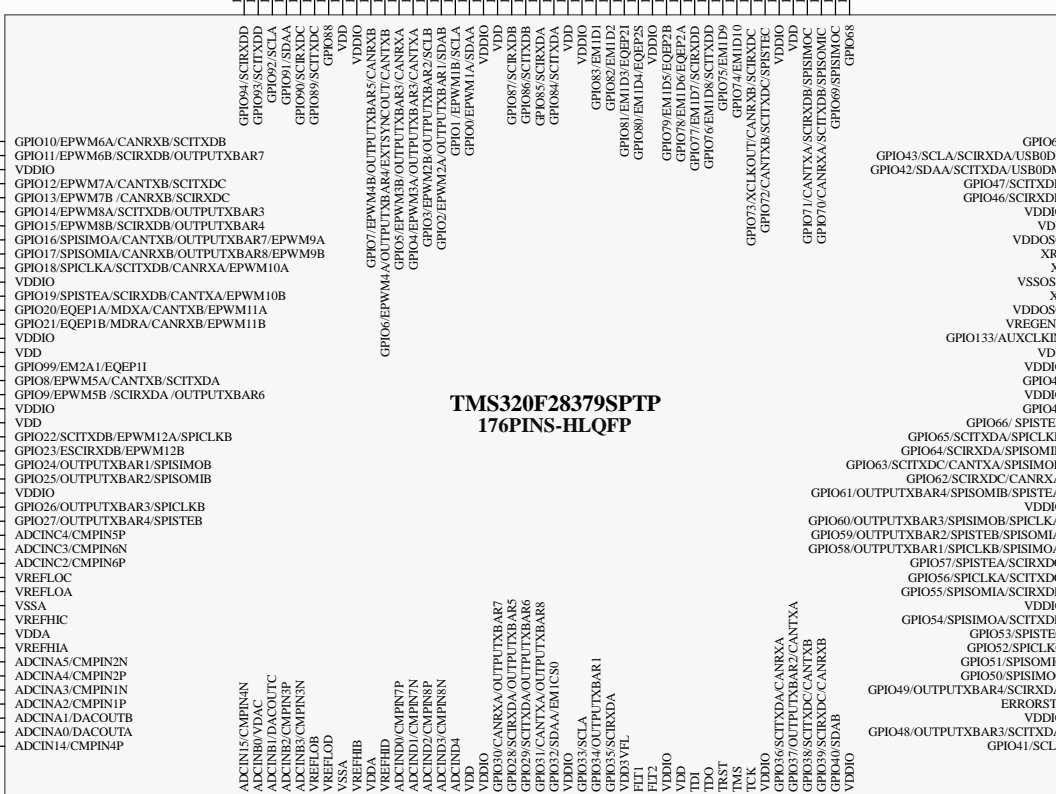
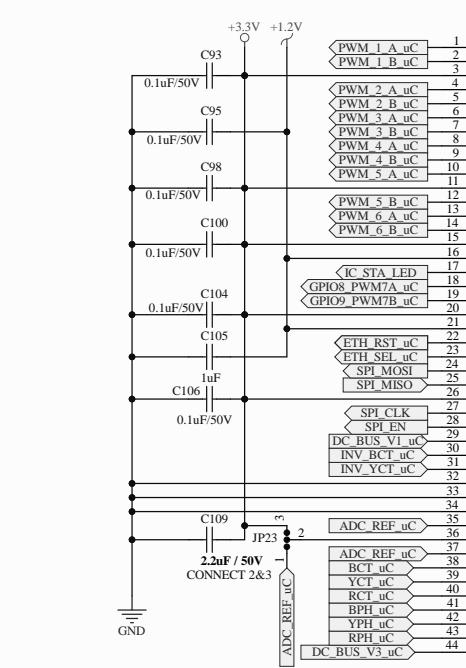
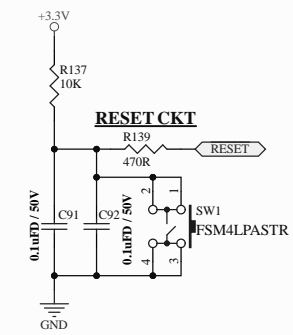
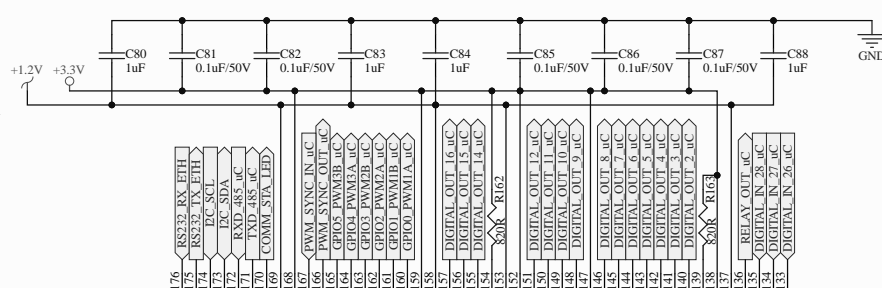
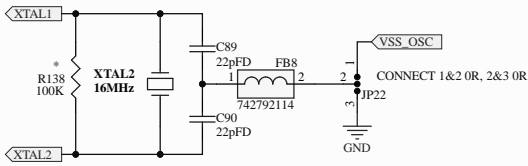
CAN HIGH LOW CONNECTOR



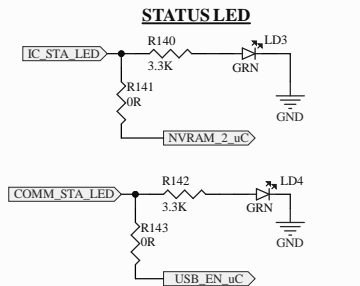
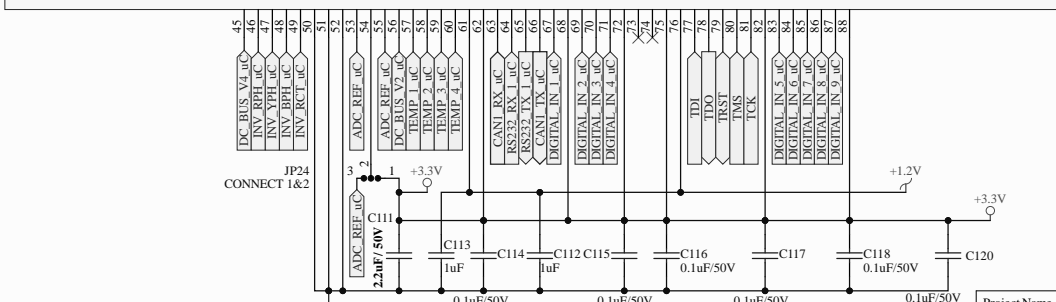
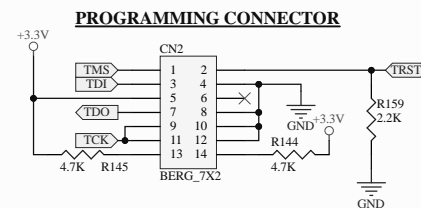
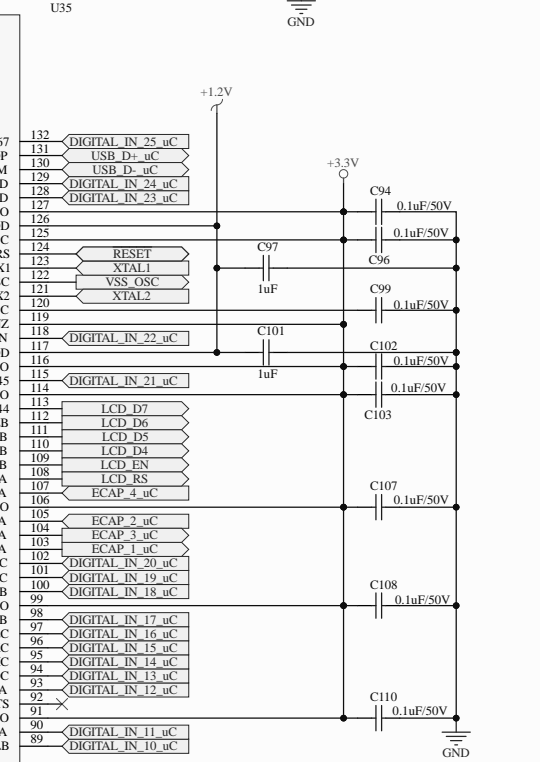
Project Name	*	Sheet 1 of 2	
PCB Number	*	Rev : *	Drawn by : *
Title	CONTROLLER CARD	Checked by : *	
Size: A3	Date: 09-12-2025	Time: 10:45:39	Approved by : *



CRYSTAL OSCILLATOR



**TMS320F28379SPTP
176PINS-HLQFP**



Project Name	*	Sheet 2 of 2
PCB Number	*	Rev : * Drawn by : *
Title	CONTROLLER CARD	Checked by : *
Size: A3	Date: 09-12-2025	Time: 10:45:40
	Approved by : *	