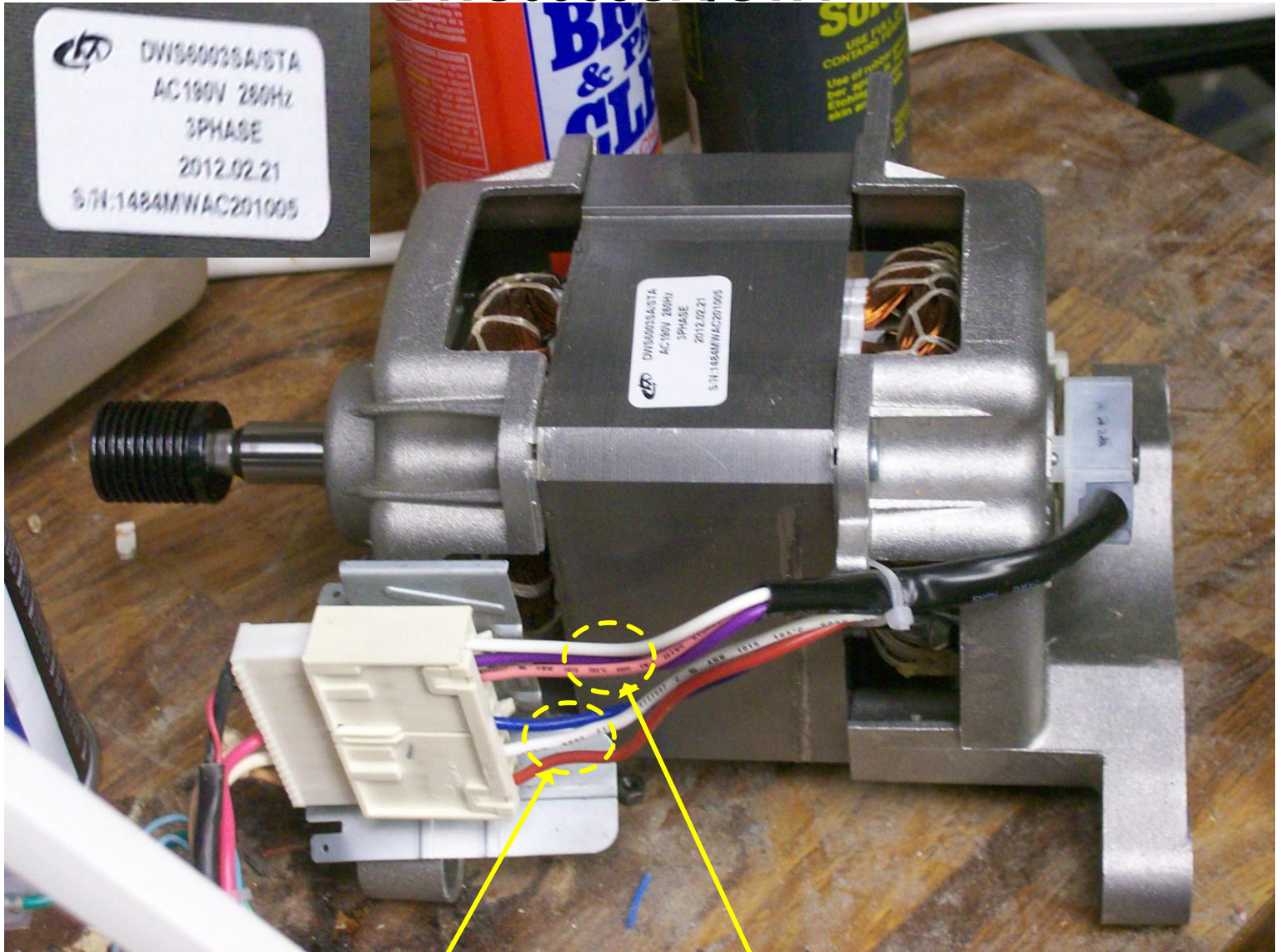


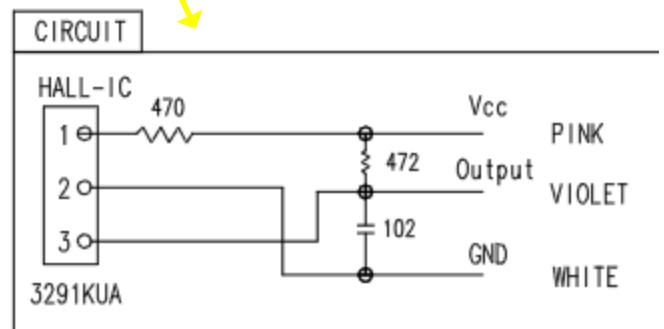
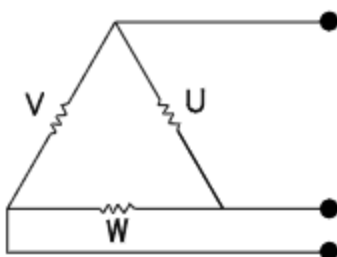
AC190volt 260Hz 3 Phase For Drum Type Washer DWS6003SA/STA



MOTOR WIRES

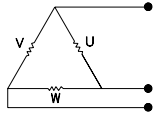
HALL SENSOR WIRES

WINDING DESIGN
(ROTATION : VIEWING FROM THE SHAFT END)

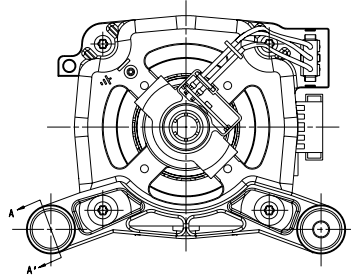




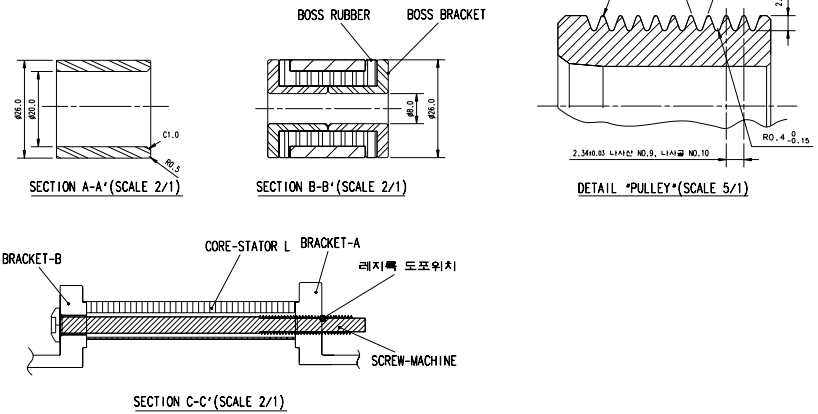
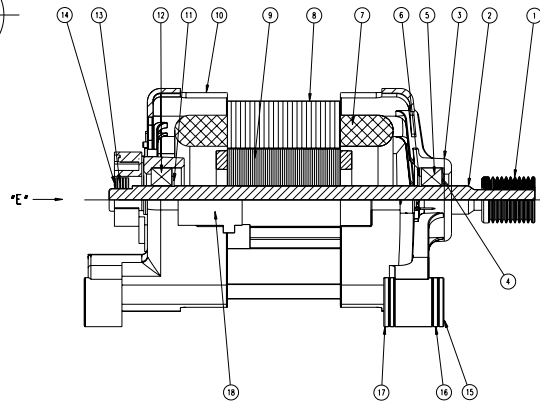
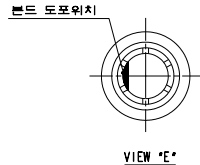
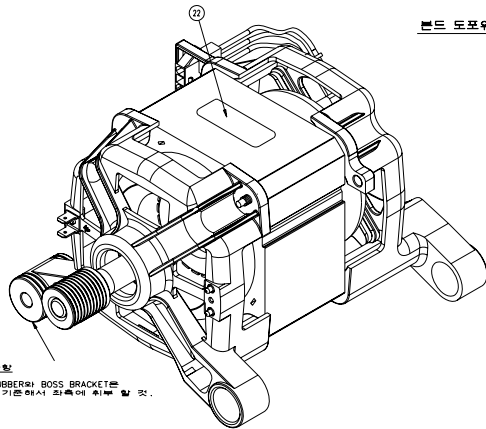
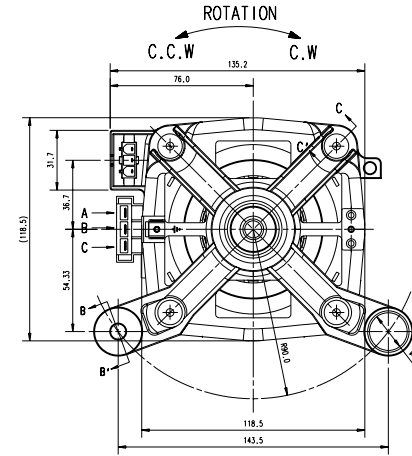
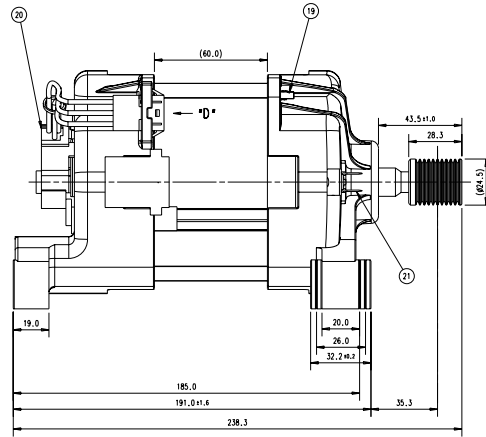
WINDING DESIGN
(ROTATION : VIEWING FROM THE SHAFT END)



품번	명칭	수량	재질	스재치수	처리	비고	품번	명칭	수량	재질	스재치수	처리	비고
12	BALL-BEARING	1	FERRITE	SKF, BB1-3032CA & NSK, 6202A8JAZZ#C3E K EAML			1	PULLEY	1	SM45C			PARKERIZING
13	MAGNET-FERRITE	1	SK5M				2	SHAFT-ROTOR	1	SM45C			
14	RING-CS	1	ZNC				3	BRACKET-A	1	ALDC8			
15	BOSS BRACKET	1	NBR(BLK)				4	SPRING-WS	1	SK5M			
16	BOSS RUBBER	1	ZNC				5	BALL-BEARING	1		SKF, BB1-3032CA & NSK, 6202A8JAZZ#C3E K EAML		
17	BOSS BRACKET	1	PBT+G/F 30				6	C-RING	1	SK5M			
18	TERMINAL HOUSING	4	SWRCH18AK				7	MAGNET WIRE	1	1NPW			
19	SCREW-MACHINE	1					8	CORE-STATOR L		S60			
20	HALL SENSOR ASS'Y	1					9	ROTOR CORE		S60			
21	EARTH TERMINAL	1					10	BRACKET-B	1	ALDC8			
22	LABEL	1					11	C-RING	1	SK5M			



WHITE
VIOLET
PINK
VIEW 'D'



NOTES

- 조립시 BRACKET-A에 0.5t WAVE WAHSE 1장 넣을 것.
- MOTOR 조립 및 운반시 HALL SENSOR ASS'Y에 충격이 가지 않도록 주의 하고, PULLEY산들의 찌힘 및 흠집이 없도록 할 것.
- HALL SENSOR ASS'Y 조립 후 HALL SENSOR : PULSE 수 -- 158개 이상/250ms[전동기 온전주파수 : 60Hz 기준] DUTY 비 -- 56% 이내일 것.
- MOTOR 조립 검사후 포장전 MAGNET이 흔들리지 않도록 RING-CS와 MAGNET사이에(SHAFT KEY WAY부)에 LOCTITE 403 접착제를 바를(도포) 것.
- STATOR와 BRACKET 이탈력은 200kgf 이상일 것.
- 3년 AGEING 한 후 BRACKET-B 방향에서 SHAFT-ROTOR를 5회 PUSH 한 다음 0.5mm 밀었을 때 예압량은 8.0~18.0kgf/cm2일 것.

년월일		심사자	승인자	변경사항			변경사유								
단위	m	사	도	설	계	검	도	심	사	승	인	DWS6003ST			
척도	n	정	훈	진	주	성	중	장	정	철		MOTOR-ASS'Y			
공차	s	08.04.29	08.05.08	08.05.08								DWS6003ST			
NO.	MODEL NAME ㉠	USER CODE	CODE NO.	VOLT	Hz ㉡	㉢	TERMINAL HOUSING	RATED TIME	CORE 재질	BEARING	EARTH TERMINAL 위치	NEW MOTECH	STORE NO	도면 번호	DWS6003ST

SPECIFICATIONS FOR APPROVAL

Customer. _____

Nomenclature. WASHING MACHINE

Customers Model. _____

Model. DWS6003SK1

Signature of Approval



1. PRODUCT DEFINED

THE MOTOR DEFINED BY THIS SPECIFICATION, IS AN 3 CYCLE DUTY,
3PHASE A.C MOTOR, HAVING ELECTRICAL,
AND MECHANICAL SPECIFICATIONS COMPATIBLE USE IN WASHING MACHINE.

2. PRODUCT SOURCE

NEW MOTECH CO.,LTD

270-65. OSEON-DONG, KWANGSAN-GU, KWANGJU-CITY, KOREA

TELEPHONE : 062-601-0622

THE PRODUCT IS IDENTIFIED AS NEW MOTECH MOTOR MODEL : DWS6003SK1

3. ELECTRICAL PERFORMANCE

3-1 MOTOR TYPE : 3PHASE A.C MOTOR, BALL BEARING,
FOUR(2) POLES.

3-2 DUTY(RATING) : 3 CYCLE

3-3 POWER SOURCE : 3PHASE

3-4 INSULATION CLASS : "B" (130℃)

3-5 WIRING DIAGRAM : REFER TO DRAWING NO. DWS6003SK1

3-7 CHARACTERISTICS

NO	RATINGS	VOLTAGE		- V	REMARK
		FREQUENCY		- Hz	
		CAPACITOR		-	
1	NO-LOAD	INPUT POWER (W)	LESS THAN	160	*STATOR WINDING TEMPERATURE 35±5℃ *ROTATION C.W *3PHASE 150V 60Hz
		CURRENT (A)	LESS THAN	4.45	
		REVOLUTION (RPM)	MORE THAN	3550	
		NOISE (dB)	LESS THAN	45	
2	NO-LOAD	INPUT POWER (W)	LESS THAN	105	*ROTATION C.W *3PHASE 190V 230Hz After Aging 15 minutes
		CURRENT (A)	LESS THAN	0.90	
		REVOLUTION (RPM)	MORE THAN	13500	
		LOAD TORQUE (Kg-Cm)	-	-	
		NOISE (dB)	LESS THAN	70	
3	MAXIMUM TORQUE	MAXIMUM (Kg-Cm)	MORE THAN	7.7	*ROTATION C.C.W AT NORMAL CONDITION *3PHASE 190V 230Hz
4	MAXIMUM TEMPERATURE RISING	at MAGNET WIRE (at IEC) (ΔT℃)	LESS THAN	95	NORMAL USE TESTED BY RATED LOAD

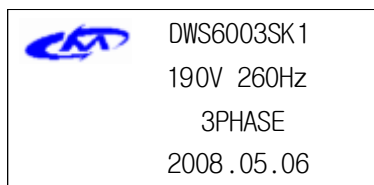
- 3-7-6 NOISE LEVEL : LESS THAN 70dB("A"SCALE) WHEN MEASURED BY A NOISE METER MICROPHONE WHICH IS LOCATED 50cm AWAY FROM THE MOTOR AT ANY DOWN IN NO-LOAD CONDITION.
- 3-7-7 DIELECTRIC STRENGTH : NO FAILURE WHEN A.C 1800V FOR ONE SECOND IS APPLIED TO THE MOTOR HOUSING AND LEAD-WIRE
- 3-7-8 INSULATION RESISTANCE : MORE THAN 50MΩ MEASURED BETWEEN THE MOTOR INSULATION AND THE LEAD WIRE
- 3-7-9 LEAKAGE CURRENT : MEASURED INSULATION CONDITION BETWEEN THE MOTOR AND HOUSING : LESS THAN 5mA

4. MECHANICAL SPECIFICATIONS

4-1 CONFIGURATION : AS SPECIFIED BY DRAWING NO. DWS6003SK1

4-2 MARKING

4-2-1 STAMPING :



:MOTOR MODEL NO.
:RATED VOLTAGE & FREQUENCY
:
:PRODUCT DATA

4-2-2 MATERIALS : POLYESTER FILM + ADHESIVE TRANSFER TAPES.

4-2-3 LOCATION : AS SPECIFIED BY DRAWING NO. DWS6003SK1

5. CONSTRUCTIONS

5-1 ENCLOSER(HOUSING) : THE MATERIAL OF ENCLOSURE IS ALDC8 (HOUSING A/B)

5-2 BEARING : DEEP GROOVE Ø15.0 BALL BEARING

5-3 STATOR CORE : THE MATERIAL IS ELECTRIC STEEL STRIP 0.5mm THICKNESS, STACKED APPROXIMATELY 60.0mm AND MEASURES 55mm INNERDIAMETER, 105mm OUT SIDE METER WITH FOUR CORNERS.

5-4 ROTOR ASSEMBLY : THE MATERIAL IS ELECTRIC STEEL STRIP 0.5mm THICKNESS, SHEET STEEL LAMINATION STACKED APPROXIMATELY 59.5mm AND MEASURES 54.4mm OUTER DIAMETER, ALUMINUM AND PROVIDED ON EACH END AS SHOWN.
THE SHAFT MATERIAL IS CARBON STEEL FOR MACHINE STRUCTURE AND 15.0mm DIAMETER.

6. INSULATION SYSTEM

6-1 MAGNET WIRE : A MOTOR MAGNET WIRE CONSISTS OF POLYESTER ENAMELED COPPER WIRE (1PEW).UL LISTED THE MATERIAL OF CONDUCTOR IS COPPER.

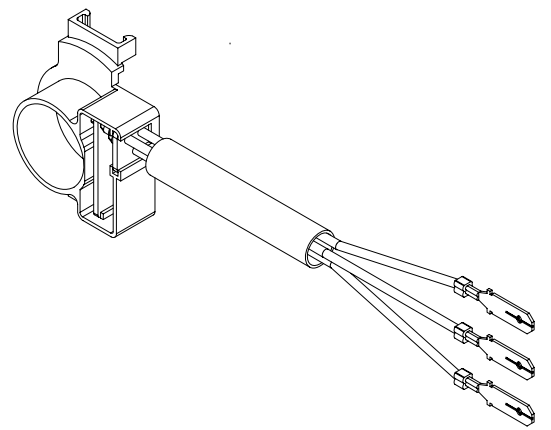
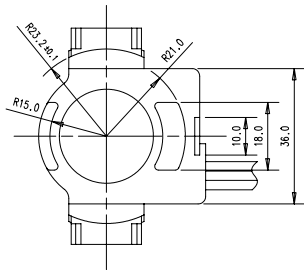
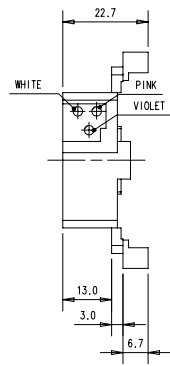
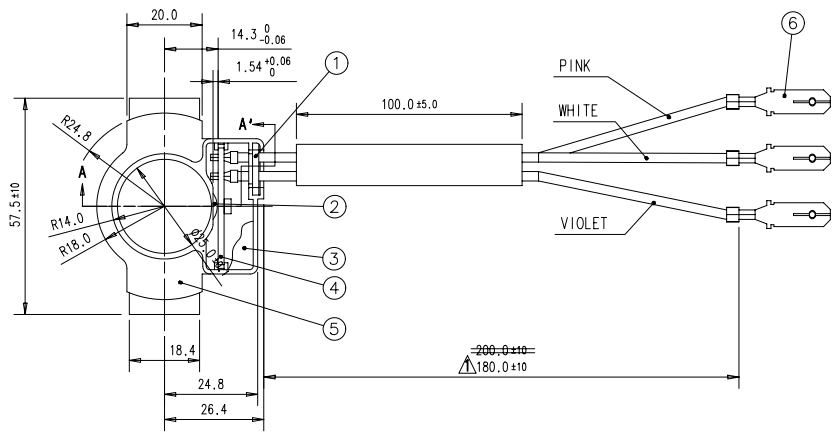
6-2 SLOT INSULATION : THE INSULATION OF SLOT AND WINDING IS POLYETHYLENE TEREPHTHALATE(SR-53)FILM 0.25mm THICKNESS FOR SLOT INSULATION AND POLYETHYLENE TEREPHTHALATE(SR-53) FILM 0.188mm THICKNESS FOR SLOT WEDGE. (POLYESTER FILM POLYETHYLENE TEREPHTHALATE)UL LISTED FILE NO.E74359(S)(REPORT DATE NOVEMBER 26. 1985) MANUFACTURED BY SUNKYONG CHEMICAL LTD.(KOREA)

6-3 INSULATION TUBE : ALL LEAD MECHANICALLY SECURED AND SOLDERED AND HELD INTO PLACE BY CODE WRAPS ON WINDINGS. ALL SPLICE CONNECTIONS COVERED BY 180°C-FLEXIBLE SILICON VARNISH GLASS INSULATION TUBING,UL LISTED FILE NO E122220(S) MANUFACTURED BY WOOSUNG ELECTRIC CO.,LTD.(KOREA)

7. POWER SUPPLY METHOD : POWER WILL BE SUPPLID THROUGH TERMINAL.
THE MATERIAL IS PBT G/F+30%

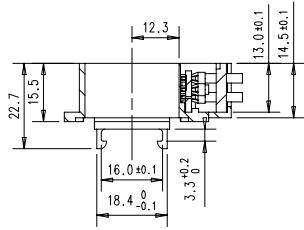
8. PACKING LIST : MOTOR PACKING BOX SIZE→1100(L)*1100(W)*583(H)
LOADING Q'TY → 2250PCS

품번	명칭	수량	재질	UL NO.	비고
1	PACKING	1	SILICON		
2	HALL-IC	1	3291KUA		Allegro
3	SILICON MOLDING		SYLGARD 170A, B		
4	PCB-ASS'Y	1	T1.6		
5	HALL-SENSOR COVER	1	NYLON #66		
6	TERMINAL	3			BJ612-6.3
7	PVC INSULATING TUBING	1	PVC(φ6.3(내경)*100)		
8	LEAD WIRE	3	UL1015 AWG #20		

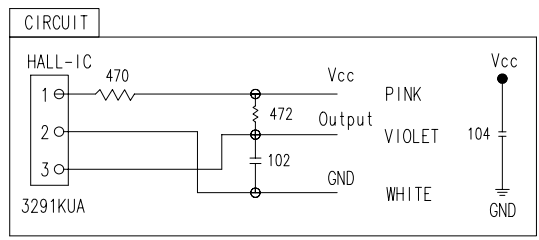


NOTES

- Rated Voltage: DC 5V
- Insulation Resistance: Above 100MΩ between connector pin and steel(non-charge metal)
- Withstand Voltage: No problem under AC100V between connector pin and steel(non-charge metal) during 1min
- Wet-resistance
 - Preheat with 45 3 C and VCC=5 0.1V during 4hours
 - Dip in a thermo-hygrostat with 40±2°C and 95~100% of relative humidity during 168hours
 - Pull out and remove water drops
After these steps, no problem with motor performance and above 1MΩ between connector pin and case
- Heat-resistance
No problem with motor performance under 125 2°C and 95~100% of relative humidity during 120hour in the thermo-hygrostat
- Cold-resistance
 - Dip in the thermo-hygrostat under -30±2°C during 48hours
 - Pull out and leave with normal temperature and humidity during 2hours.
After these steps, no problem with motor performance
- Thermal shock
No problem with motor performance under 500 cycles
* 1 cycle = Turn and turn -30°C and 80°C during each 30min (5minute to change high temperature to low temperature)
- Spraying salt water
No problem with motor performance under 3 cycles
* 1 cycle = Spray during 8hours and tissue during 16hours 5% with salt water and 35±3°C
- Vibration
No problem with motor performance under 10~500Hz of Frequency and 1.5MM of Amplitude to X,Y,Z direction during 2hours
- Other conditions meet the approval of specification
- Lead (Solder): 50Sn
- φ25 after molding silicon is an exact round (Roundness = below 0.2)
- Hall sensor: *Pulse -- Above 158 / 250ms (Revolving Frequency: 60Hz base)
Duty - Below 56%
- Concentricity of φ25 (R23.2) = Below 0.1
- Not impaired and damaged on the hook during assembling motors



SECTION A-A'



3	07.03.06	조우성 주성중 장정철	△항 추가	신규공용모델추가
2	05.03.02	이지민 주성중 장정철	△항 추가	L/소재일 미표기에 대한 항목 추가
1	04.08.13	김정희 장정철	*항 변경	조립조건 개선
NO.	년 월 일	서명	심사	변경 사항
단위	m	사도	실계	검도
척도	N	정경준	김정희	장정철
공차		04.02.03	04.02.03	04.02.03
NEW MOTECH				STORE NO
ASS'Y HALL-SENSOR				
DWS8003SK				
MP75-10040A				