

Variable DC/DC Control Port A/B

PB_PDO_0 --> GPIO_15 PA_PDO_0 --> SWD_CLK
 PB_PDO_1 --> GPIO_14 PA_PDO_1 --> SWD_DAT

Truth Table

PDO_1	PDO_0	Output Voltage
0	0	5V
0	1	9V
1	0	15V
1	1	20V

SS Mux Control Port A/B

PB_DP_MODE --> GPIO_0 --> MXCTL1 PA_DP_MODE --> GPIO_5 --> MXCTL1
 PB_USB3 --> GPIO_1 --> MXCTL0 PA_USB3 --> GPIO_6 --> MXCTL0
 PB_POL --> GPIO_2 --> MXCTL2 PA_POL --> GPIO_7 --> MXCTL2

PB_HPD --> GPIO4 PA_HPD --> GPIO3

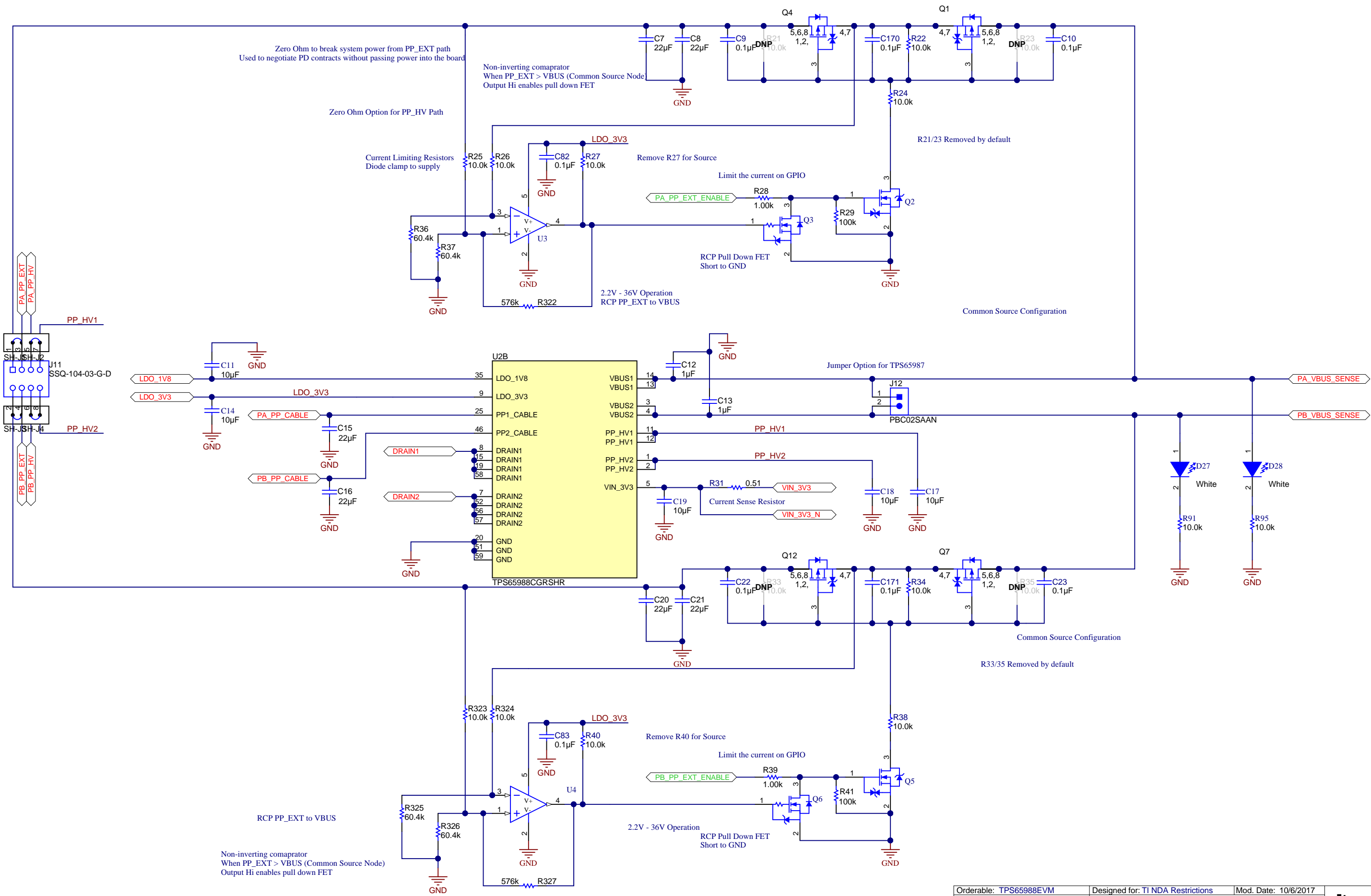
I2C Address Setting

Switch 1-3 Off --> 000b (0)
 Switch 1 On --> 001b (0.34)
 Switch 2 On --> 010b (0.50)
 Switch 3 On --> 011b (0.90)

BUSPOWERZ Configuration

Switch 4-6 Off --> 000b (0)
 Switch 4 On --> 001b (0.34)
 Switch 5 On --> 010b (0.50)
 Switch 6 On --> 011b (0.90)

Texas Instruments and/or its licensors do not warrant the accuracy or completeness of this specification or any information contained therein. Texas Instruments and/or its licensors do not warrant that this design will meet the specifications, will be suitable for your application or fit for any particular purpose, or will operate in an implementation. Texas Instruments and/or its licensors do not warrant that the design is production worthy. You should completely validate and test your design implementation to confirm the system functionality for your application.

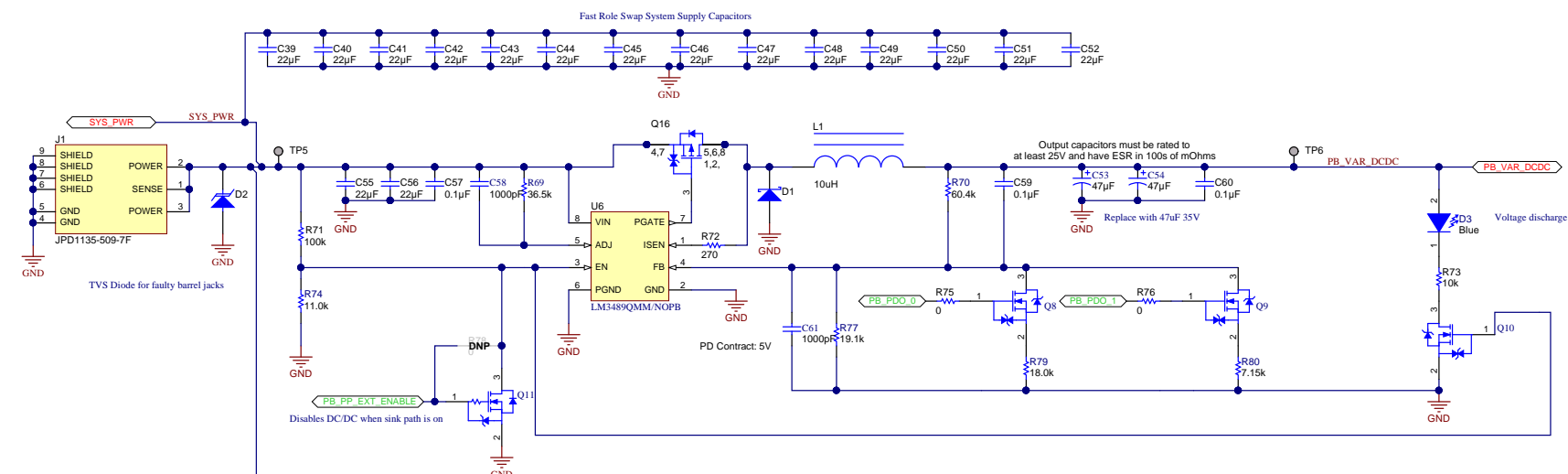


Texas Instruments and/or its licensors do not warrant the accuracy or completeness of this specification or any information contained therein. Texas Instruments and/or its licensors do not warrant that this design will meet the specifications, will be suitable for your application or fit for any particular purpose, or will operate in an implementation. Texas Instruments and/or its licensors do not warrant that the design is production worthy. You should completely validate and test your design implementation to confirm the system functionality for your application.

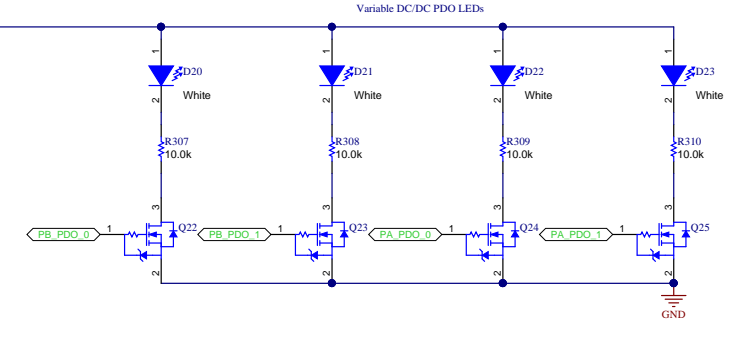
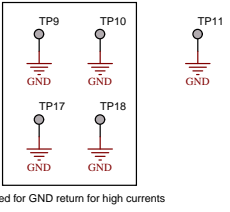
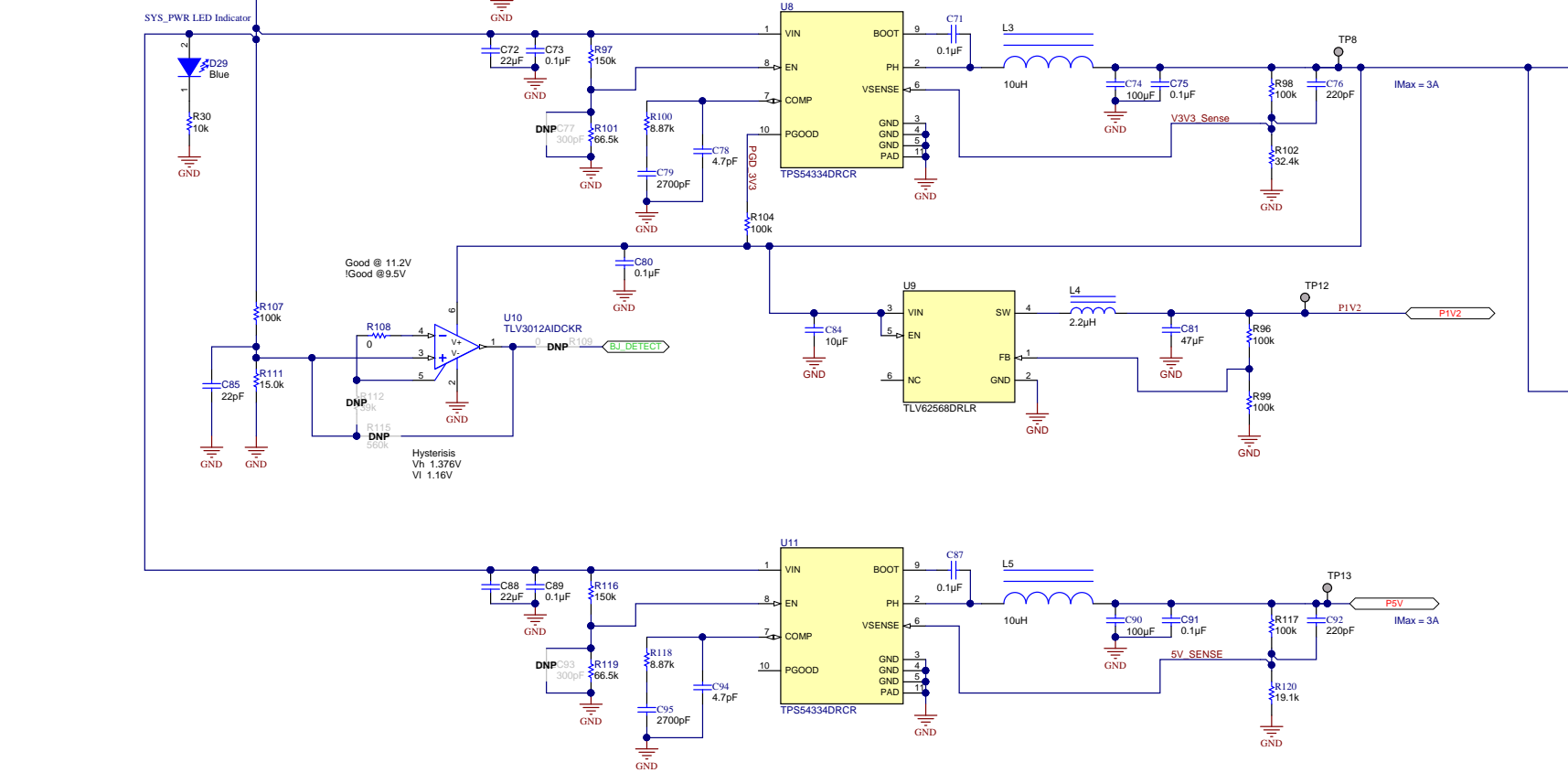
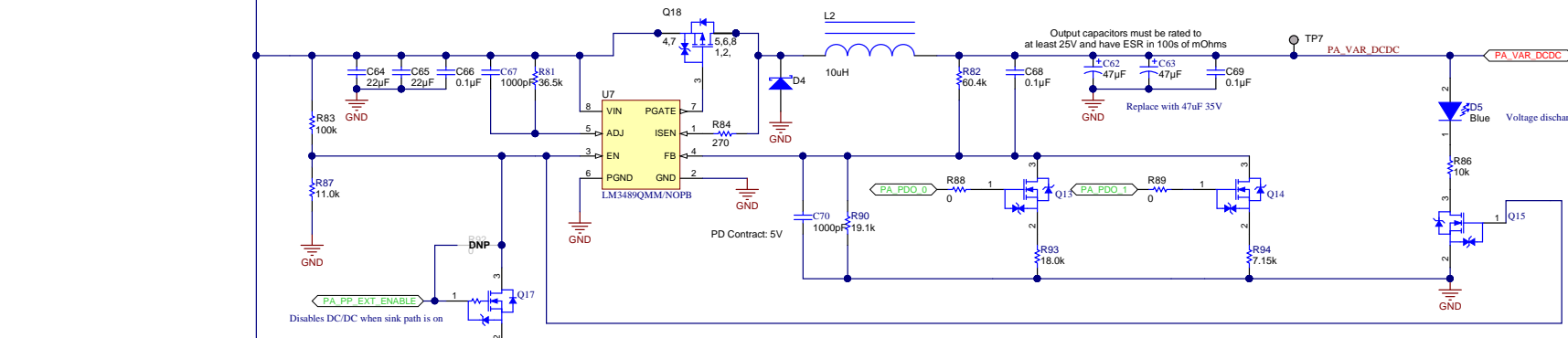
Orderable: TPS65988EVM	Designed for: TI NDA Restrictions	Mod. Date: 10/6/2017
TID #: N/A	Project Title: TPS65988EVM	
Number: ACS009	Rev: A	Sheet Title: TPS65988 PD Power Path
SVN Rev: Version control disabled	Assembly Variant: 001	Sheet: 3 of 12
Drawn By: Jacob Ontiveros	File: ACS009_PD_Power_Path.SchDoc	Size: B
Engineer: Jacob Ontiveros	Contact: http://www.ti.com/support	



© Texas Instruments 2017



PDO_1	PDO_0	Output Voltage	Feedback (R1)	Feedback (R2)	Output Voltage
0	0	5V	60.4k	19.1k	5.15V
0	1	9V	60.4k	9.27k	9.26V
1	0	15V	60.4k	5.2k	15.62V
1	1	20V	60.4k	4.04k	19.78V



Texas Instruments and/or its licensors do not warrant the accuracy or completeness of this specification or any information contained therein. Texas Instruments and/or its licensors do not warrant that this design will meet the specifications, will be suitable for your application or fit for any particular purpose, or will operate in an implementation. Texas Instruments and/or its licensors do not warrant that the design is production worthy. You should completely validate and test your design implementation to confirm the system functionality for your application.

A

B

C

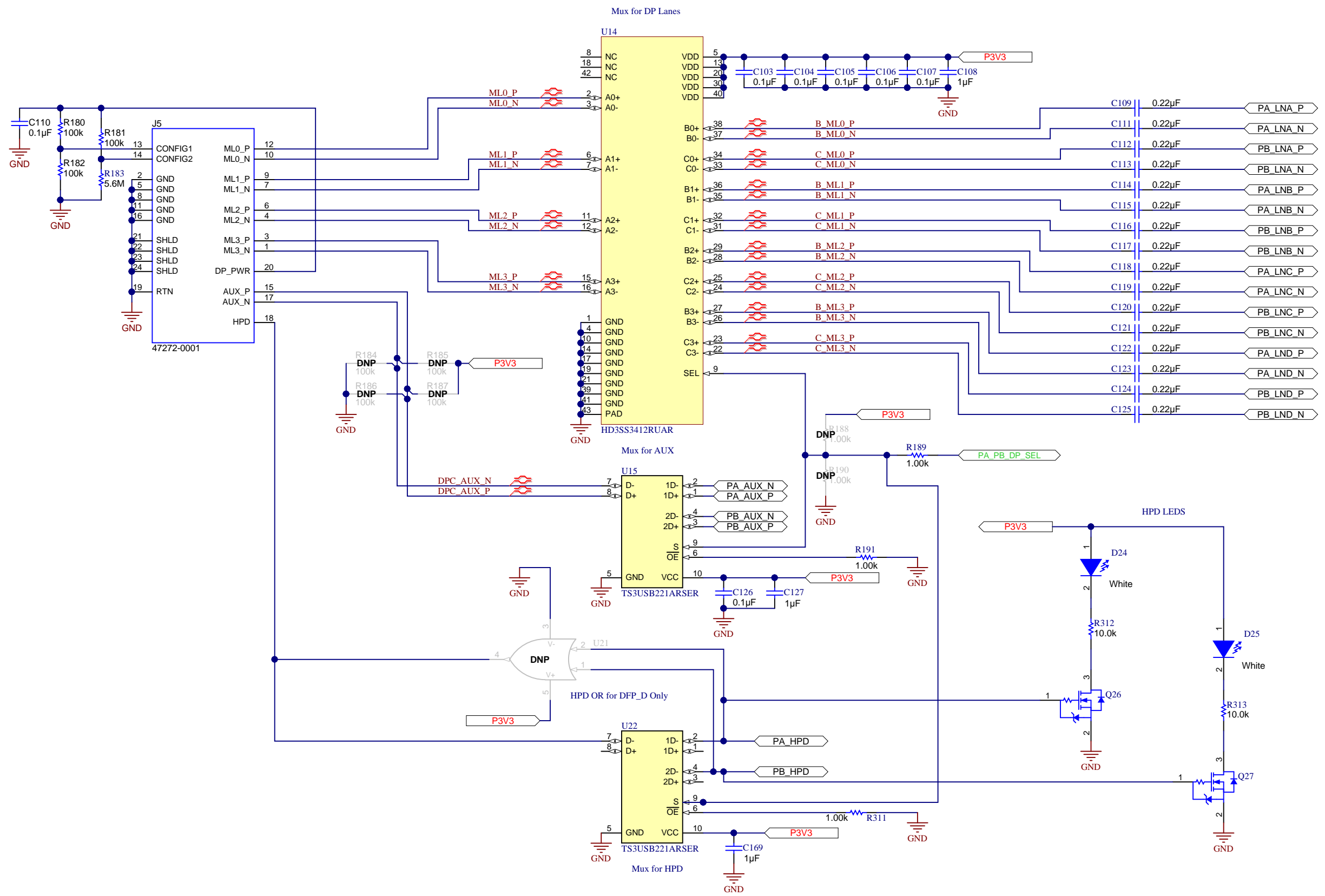
D

A

B

C

D



Texas Instruments and/or its licensors do not warrant the accuracy or completeness of this specification or any information contained therein. Texas Instruments and/or its licensors do not warrant that this design will meet the specifications, will be suitable for your application or fit for any particular purpose, or will operate in an implementation. Texas Instruments and/or its licensors do not warrant that the design is production worthy. You should completely validate and test your design implementation to confirm the system functionality for your application.

Orderable: TPS65988EVM	Designed for: TI NDA Restrictions	Mod. Date: 6/21/2017
TID #: N/A	Project Title: TPS65988EVM	
Number: ACS009	Rev: A	Sheet Title: DP Source Mux & Connector
SVN Rev: Version control disabled	Assembly Variant: 001	Sheet: 5 of 12
Drawn By: Jacob Ontiveros	File: ACS009_DisplayPort_SchDoc	Size: B
Engineer: Jacob Ontiveros	Contact: http://www.ti.com/support	



A

B

C

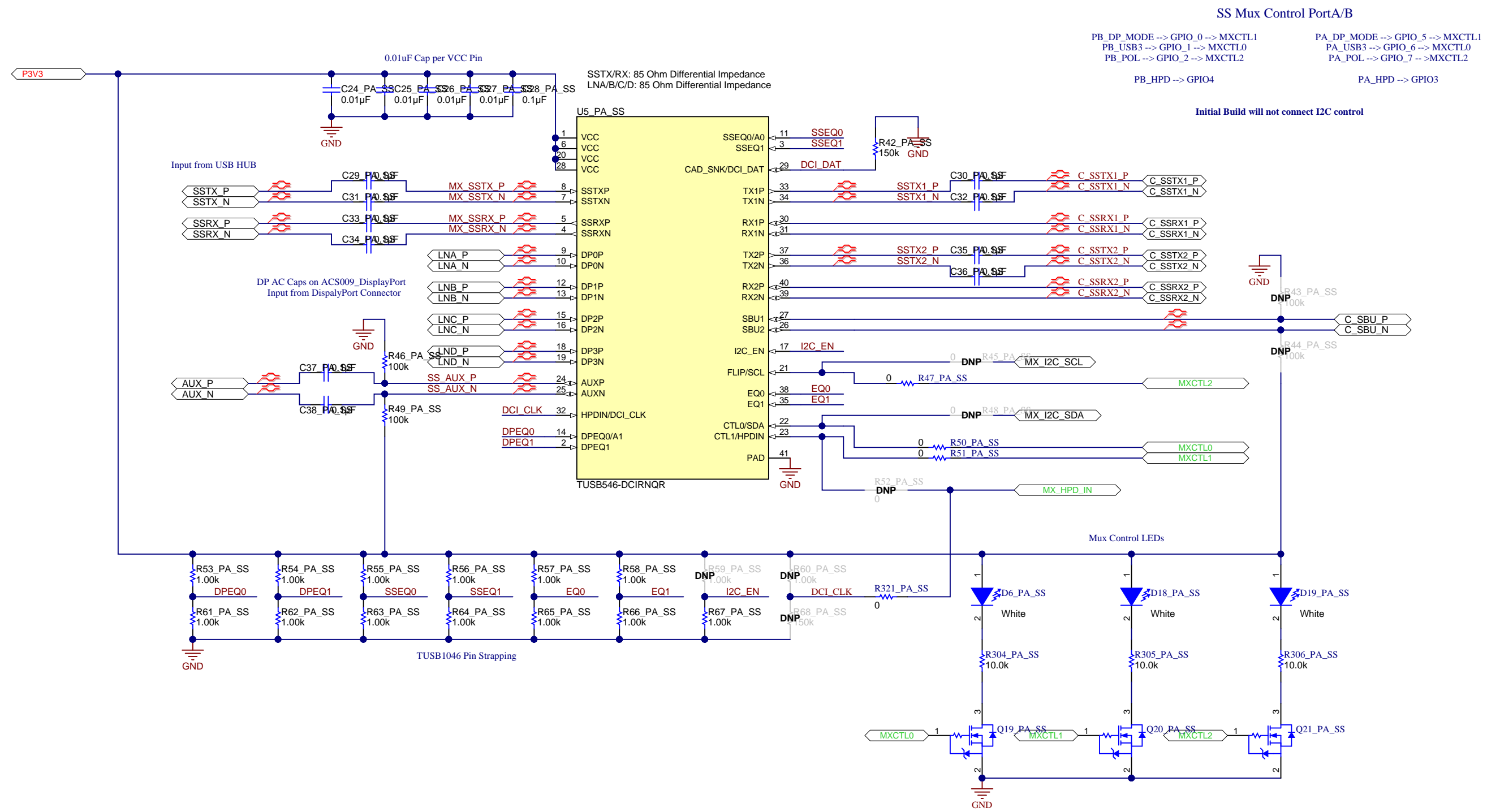
D

A

B

C

D



Texas Instruments and/or its licensors do not warrant the accuracy or completeness of this specification or any information contained therein. Texas Instruments and/or its licensors do not warrant that this design will meet the specifications, will be suitable for your application or fit for any particular purpose, or will operate in an implementation. Texas Instruments and/or its licensors do not warrant that the design is production worthy. You should completely validate and test your design implementation to confirm the system functionality for your application.

Orderable: TPS65988EVM	Designed for: TI NDA Restrictions	Mod. Date: 6/21/2017
TID #: N/A	Project Title: TPS65988EVM	
Number: ACS009	Rev: A	Sheet Title: Type-C SS Mux
SVN Rev: Version control disabled	Assembly Variant: 001	Sheet: 6 of 12
Drawn By: Jacob Ontiveros	File: ACS009_SS_MUX.SchDoc	Size: B
Engineer: Jacob Ontiveros	Contact: http://www.ti.com/support	

http://www.ti.com
 © Texas Instruments 2017

A

B

C

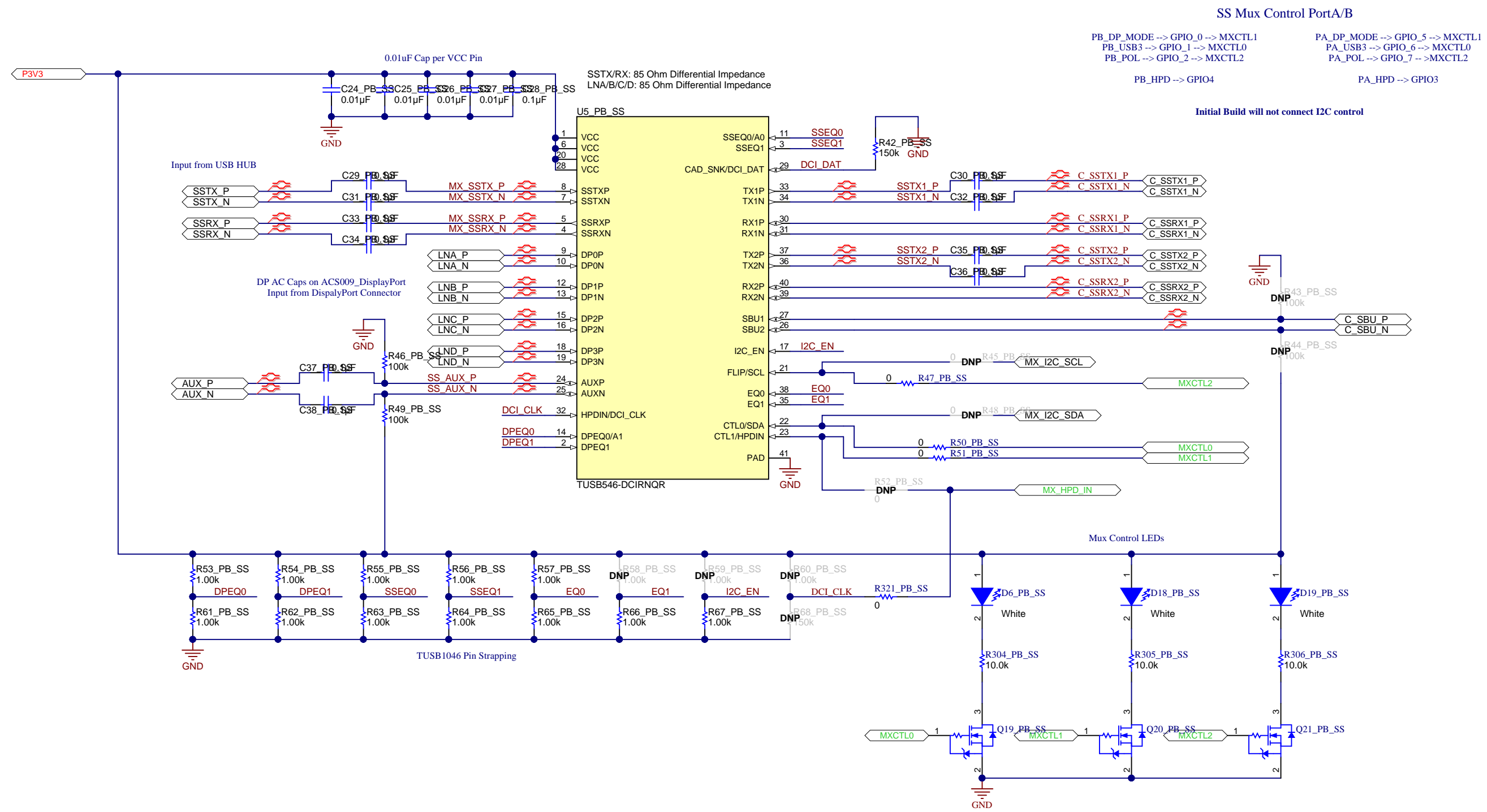
D

A

B

C

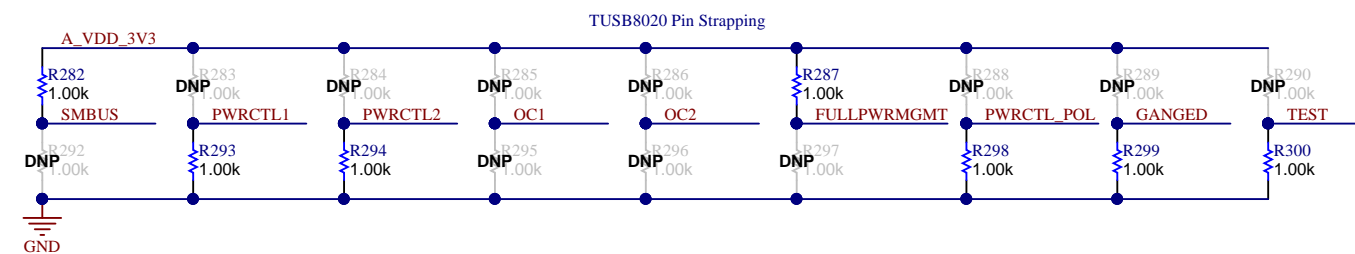
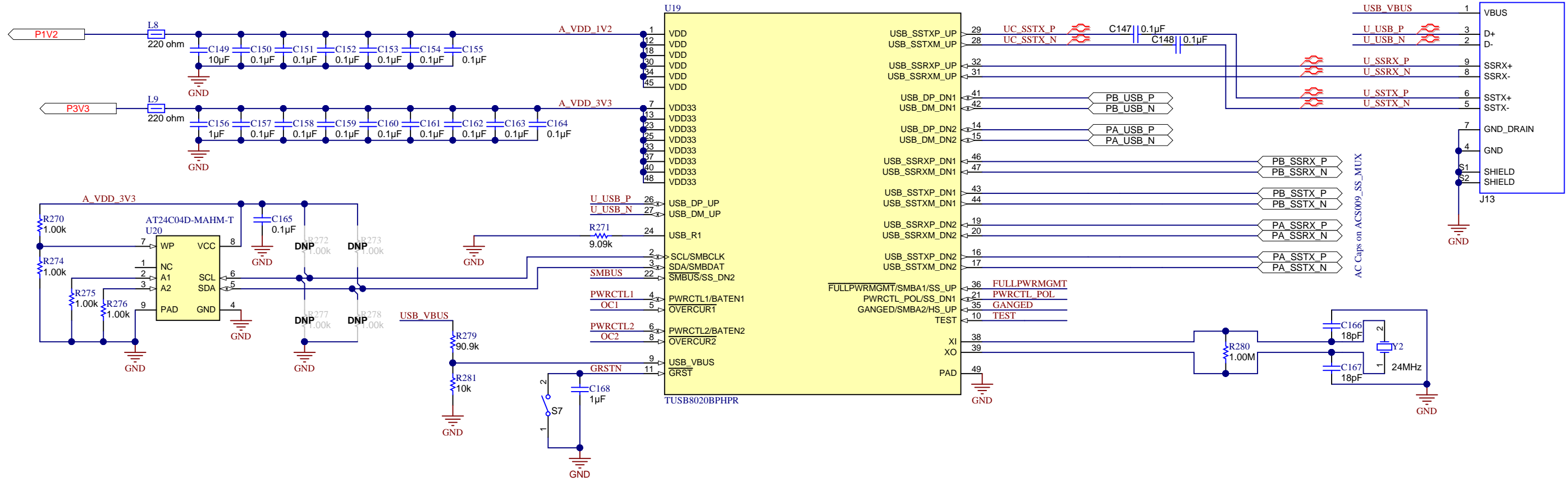
D



Texas Instruments and/or its licensors do not warrant the accuracy or completeness of this specification or any information contained therein. Texas Instruments and/or its licensors do not warrant that this design will meet the specifications, will be suitable for your application or fit for any particular purpose, or will operate in an implementation. Texas Instruments and/or its licensors do not warrant that the design is production worthy. You should completely validate and test your design implementation to confirm the system functionality for your application.

Orderable: TPS65988EVM	Designed for: TI NDA Restrictions	Mod. Date: 6/21/2017
TID #: N/A	Project Title: TPS65988EVM	
Number: ACS009	Rev: A	Sheet Title: Type-C SS Mux
SVN Rev: Version control disabled	Assembly Variant: 001	Sheet: 6 of 12
Drawn By: Jacob Ontiveros	File: ACS009_SS_MUX.SchDoc	Size: B
Engineer: Jacob Ontiveros	Contact: http://www.ti.com/support	

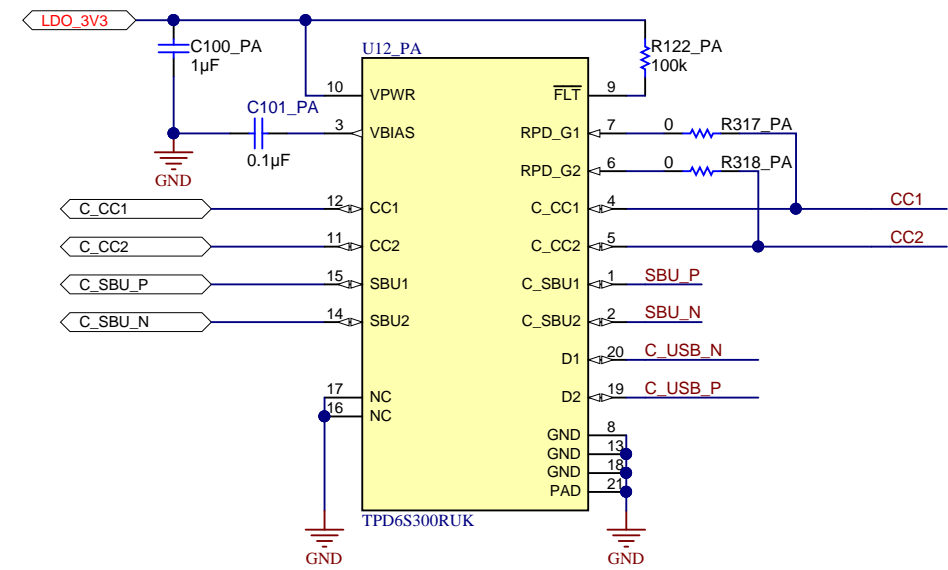
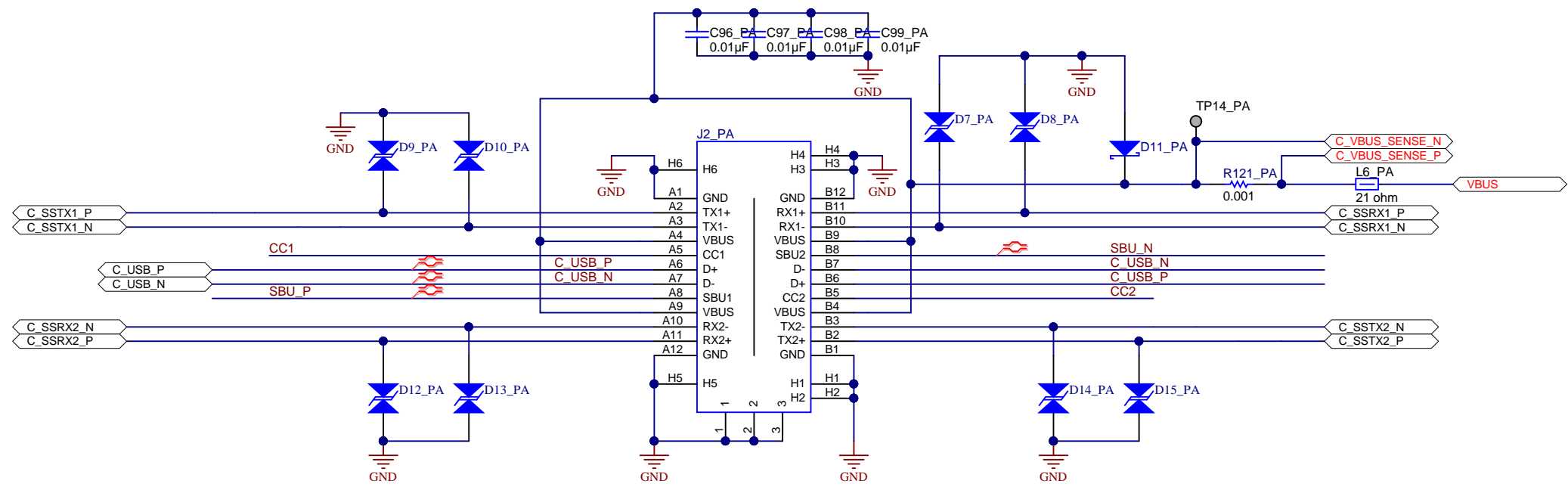




Orderable: TPS65988EVM	Designed for: TI NDA Restrictions	Mod. Date: 6/21/2017
TID #: N/A	Project Title: TPS65988EVM	
Number: ACS009	Rev: A	Sheet Title: USB3 Hub & Type-B Connector
SVN Rev: Version control disabled	Assembly Variant: 001	Sheet: 7 of 12
Drawn By: Jacob Ontiveros	File: ACS009_USB_Input.SchDoc	Size: B
Engineer: Jacob Ontiveros	Contact: http://www.ti.com/support	

Texas Instruments and/or its licensors do not warrant the accuracy or completeness of this specification or any information contained therein. Texas Instruments and/or its licensors do not warrant that this design will meet the specifications, will be suitable for your application or fit for any particular purpose, or will operate in an implementation. Texas Instruments and/or its licensors do not warrant that the design is production worthy. You should completely validate and test your design implementation to confirm the system functionality for your application.

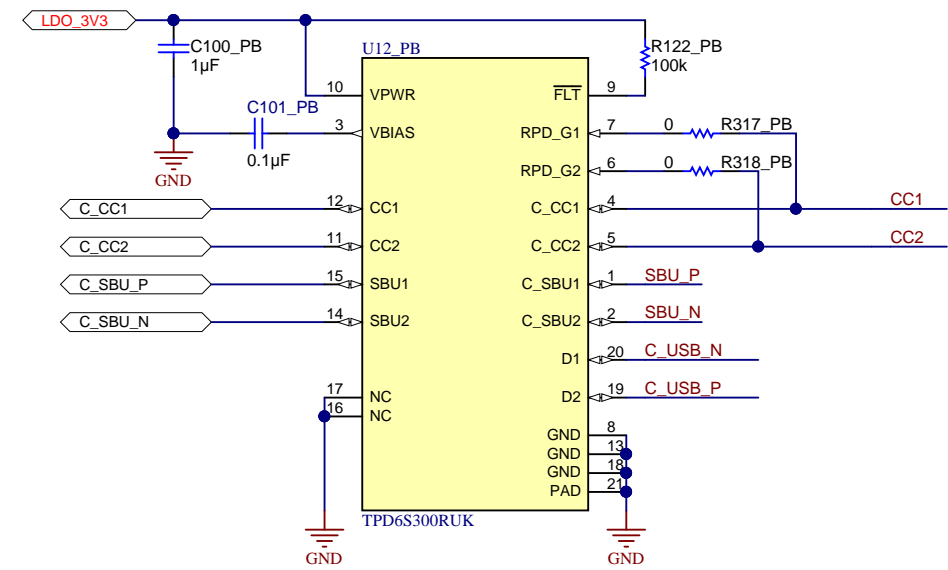
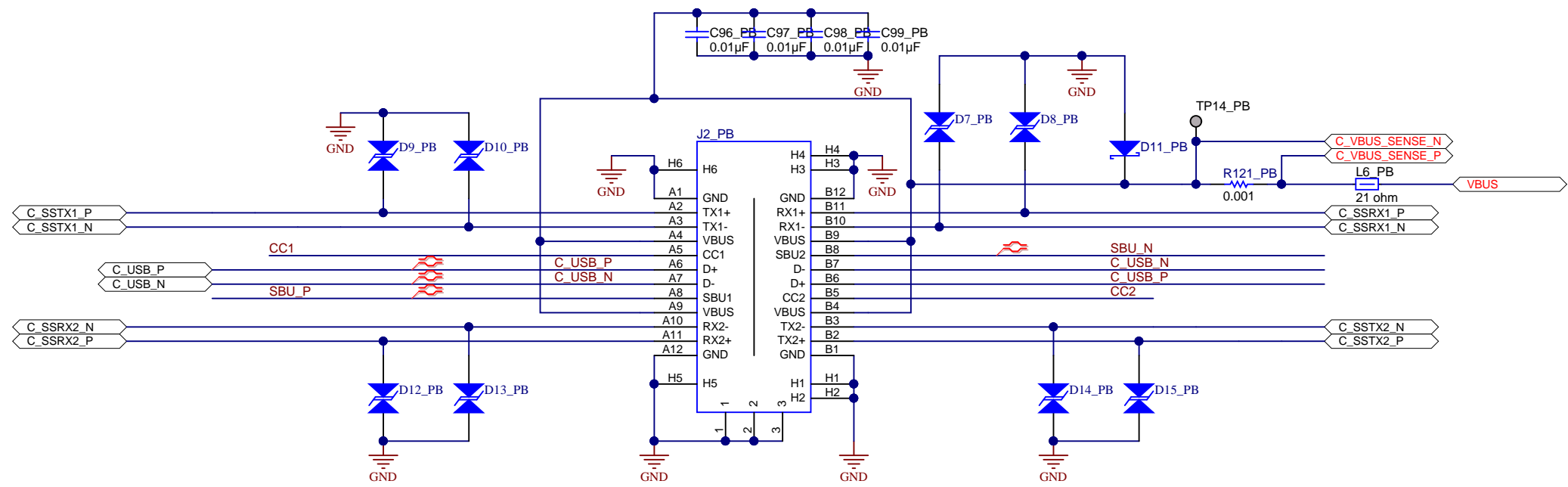




Texas Instruments and/or its licensors do not warrant the accuracy or completeness of this specification or any information contained therein. Texas Instruments and/or its licensors do not warrant that this design will meet the specifications, will be suitable for your application or fit for any particular purpose, or will operate in an implementation. Texas Instruments and/or its licensors do not warrant that the design is production worthy. You should completely validate and test your design implementation to confirm the system functionality for your application.

Orderable: TPS65988EVM	Designed for: TI NDA Restrictions	Mod. Date: 6/21/2017
TID #: N/A	Project Title: TPS65988EVM	
Number: ACS009	Rev: A	Sheet Title: Type-C Connector & Protection
SVN Rev: Version control disabled	Assembly Variant: 001	Sheet: 8 of 12
Drawn By: Jacob Ontiveros	File: ACS009_Type_C.SchDoc	Size: B
Engineer: Jacob Ontiveros	Contact: http://www.ti.com/support	

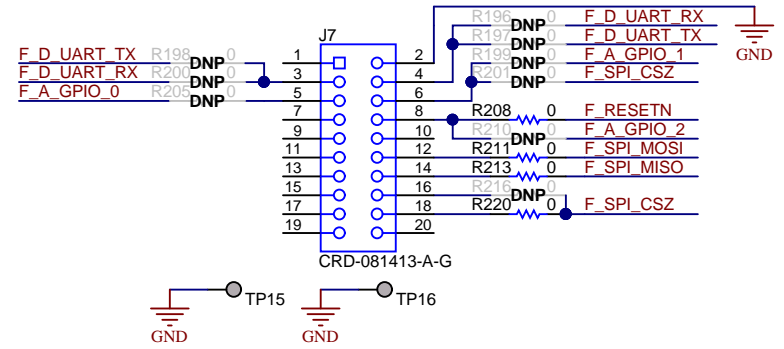
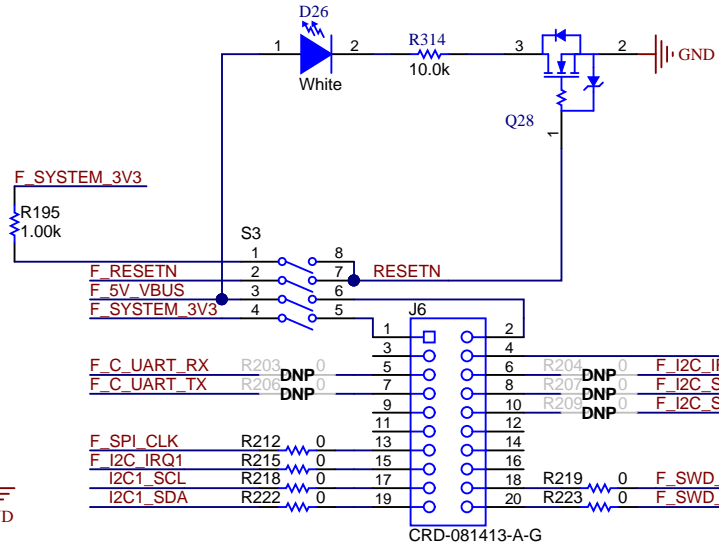
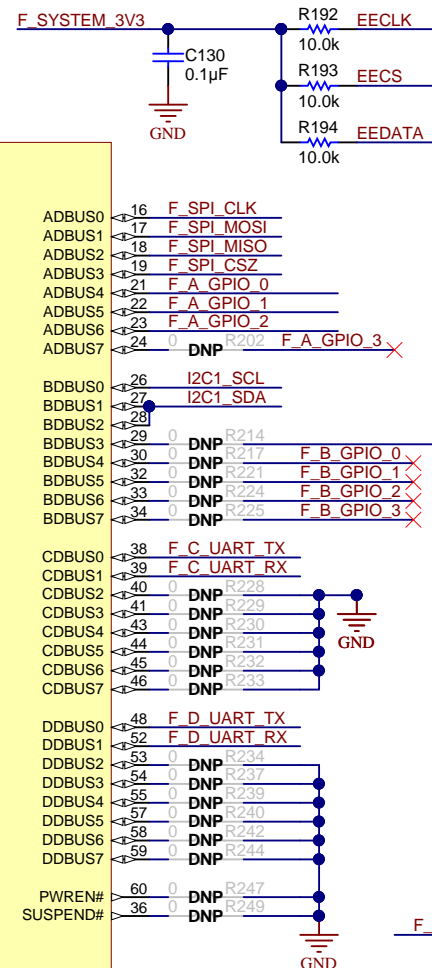
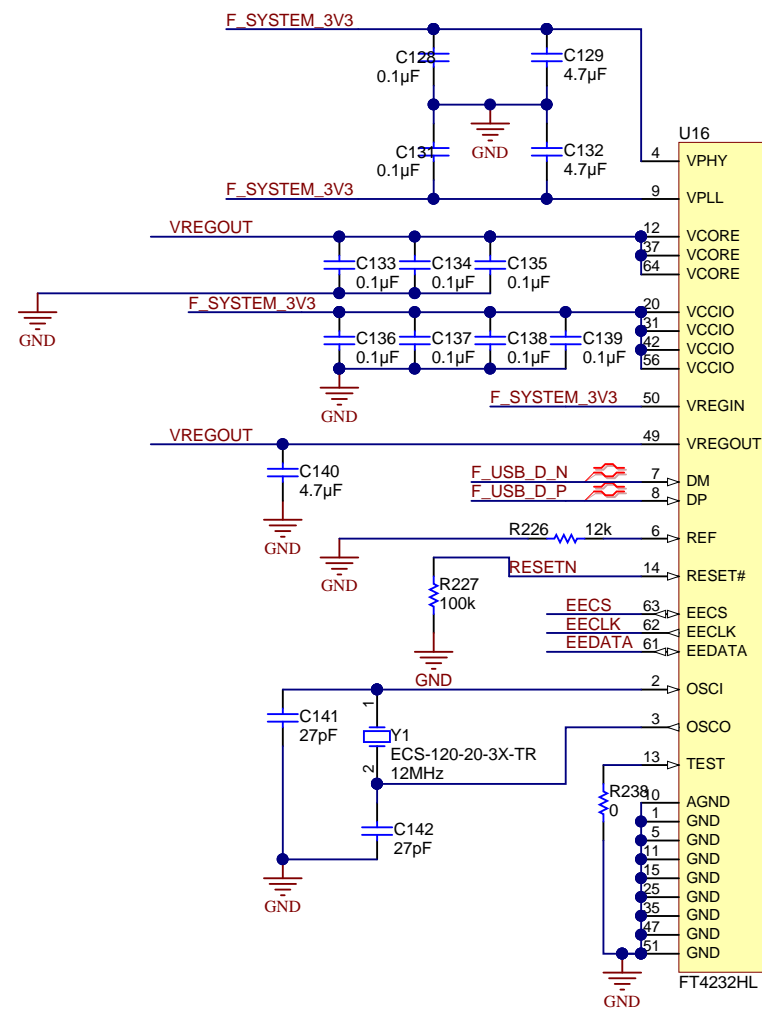




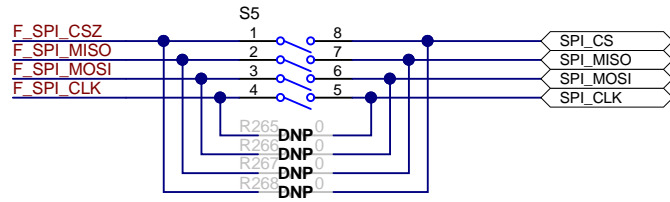
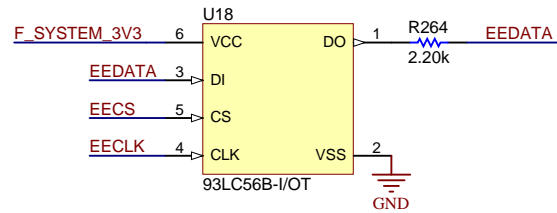
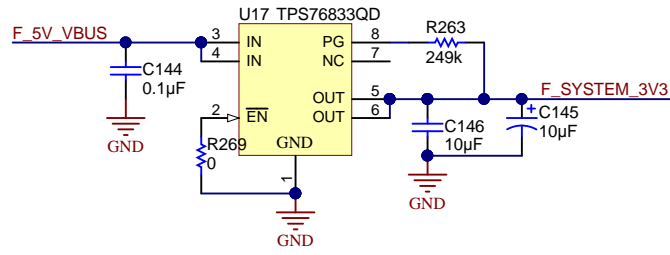
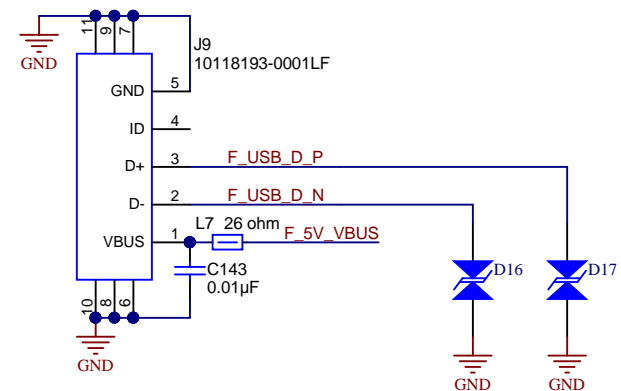
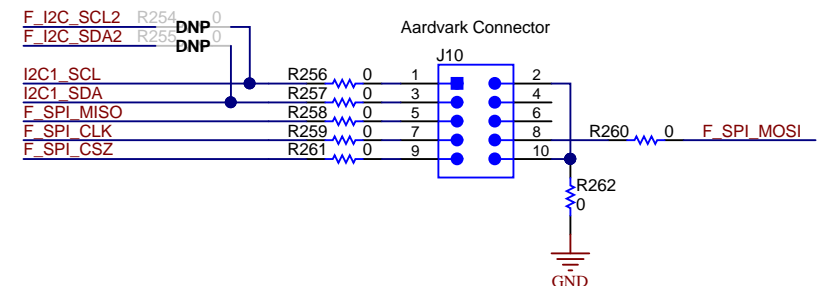
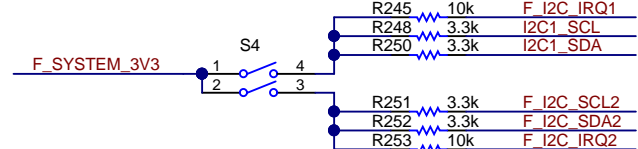
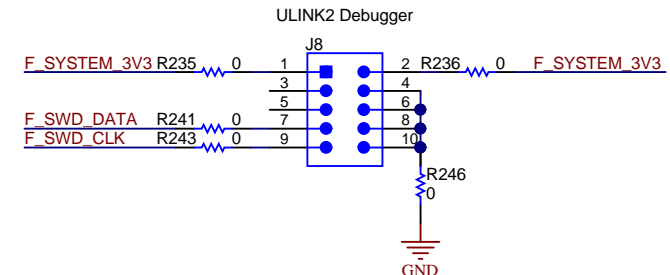
Texas Instruments and/or its licensors do not warrant the accuracy or completeness of this specification or any information contained therein. Texas Instruments and/or its licensors do not warrant that this design will meet the specifications, will be suitable for your application or fit for any particular purpose, or will operate in an implementation. Texas Instruments and/or its licensors do not warrant that the design is production worthy. You should completely validate and test your design implementation to confirm the system functionality for your application.

Orderable: TPS65988EVM	Designed for: TI NDA Restrictions	Mod. Date: 6/21/2017
TID #: N/A	Project Title: TPS65988EVM	
Number: ACS009	Rev: A	Sheet Title: Type-C Connector & Protection
SVN Rev: Version control disabled	Assembly Variant: 001	Sheet: 8 of 12
Drawn By: Jacob Ontiveros	File: ACS009_Type_C.SchDoc	Size: B
Engineer: Jacob Ontiveros	Contact: http://www.ti.com/support	





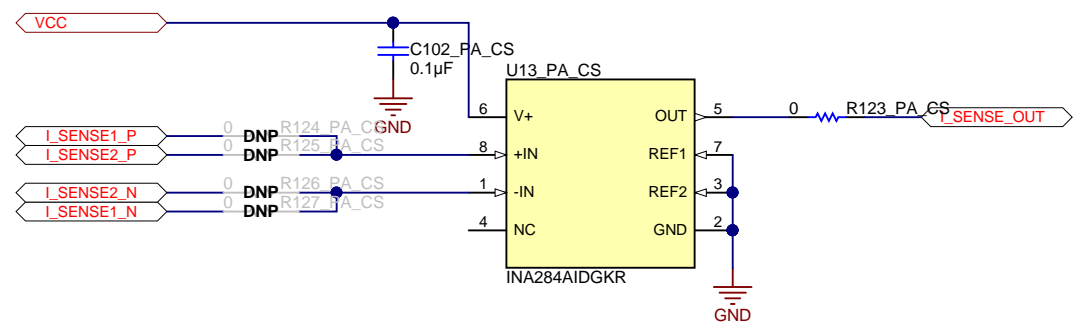
BoosterPack Connectors



Texas Instruments and/or its licensors do not warrant the accuracy or completeness of this specification or any information contained therein. Texas Instruments and/or its licensors do not warrant that this design will meet the specifications, will be suitable for your application or fit for any particular purpose, or will operate in an implementation. Texas Instruments and/or its licensors do not warrant that the design is production worthy. You should completely validate and test your design implementation to confirm the system functionality for your application.

Orderable: TPS65988EVM	Designed for: TI NDA Restrictions	Mod. Date: 10/5/2017
TID #: N/A	Project Title: TPS65988EVM	
Number: ACS009	Rev: A	Sheet Title: FTDI Debug Board
SVN Rev: Version control disabled	Assembly Variant: 001	Sheet: 9 of 12
Drawn By: Jacob Ontiveros	File: ACS009_FTDI_Debug_SchDoc	Size: B
Engineer: Jacob Ontiveros	Contact: http://www.ti.com/support	

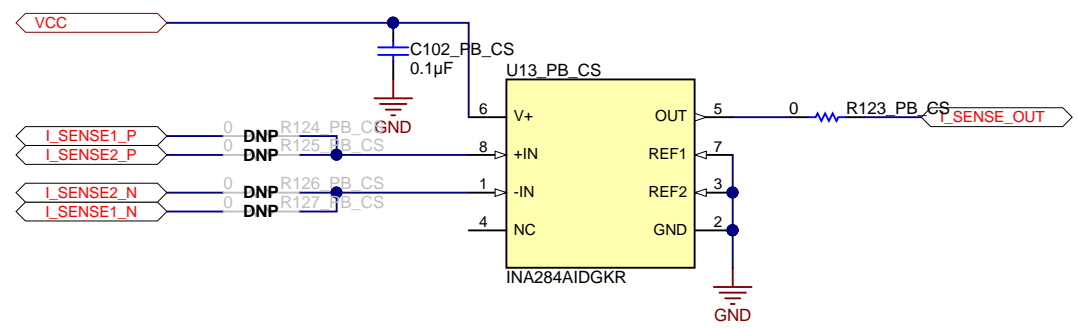





Texas Instruments and/or its licensors do not warrant the accuracy or completeness of this specification or any information contained therein. Texas Instruments and/or its licensors do not warrant that this design will meet the specifications, will be suitable for your application or fit for any particular purpose, or will operate in an implementation. Texas Instruments and/or its licensors do not warrant that the design is production worthy. You should completely validate and test your design implementation to confirm the system functionality for your application.

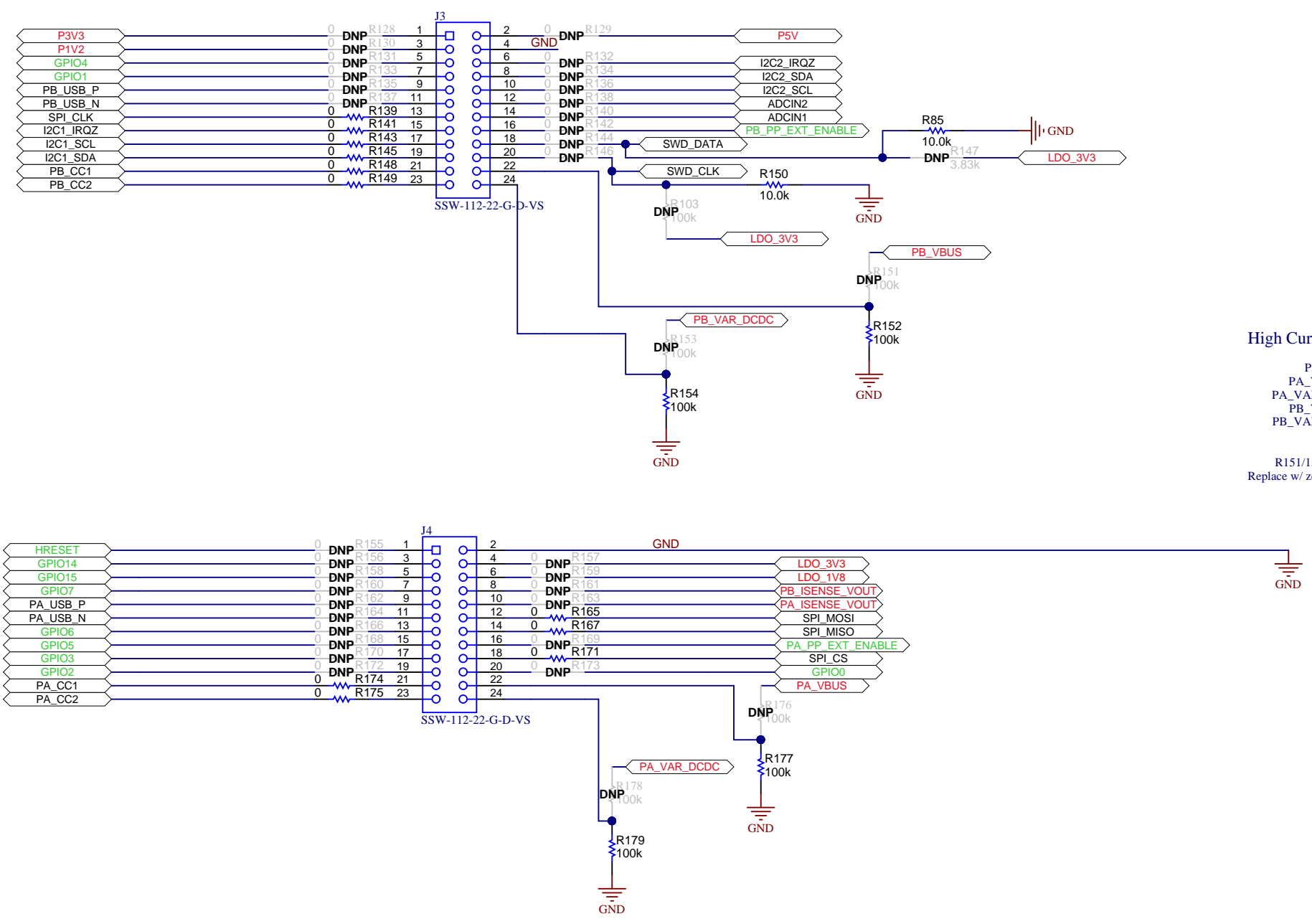
Orderable: TPS65988EVM	Designed for: TI NDA Restrictions	Mod. Date: 6/21/2017
TID #: N/A	Project Title: TPS65988EVM	
Number: ACS009	Rev: A	Sheet Title: Current Sense
SVN Rev: Version control disabled	Assembly Variant: 001	Sheet: 10 of 12
Drawn By: Jacob Ontiveros	File: ACS009_Current_Sense.SchDoc	Size: B
Engineer: Jacob Ontiveros	Contact: http://www.ti.com/support	http://www.ti.com





Texas Instruments and/or its licensors do not warrant the accuracy or completeness of this specification or any information contained therein. Texas Instruments and/or its licensors do not warrant that this design will meet the specifications, will be suitable for your application or fit for any particular purpose, or will operate in an implementation. Texas Instruments and/or its licensors do not warrant that the design is production worthy. You should completely validate and test your design implementation to confirm the system functionality for your application.

Orderable: TPS65988EVM	Designed for: TI NDA Restrictions	Mod. Date: 6/21/2017	 http://www.ti.com © Texas Instruments 2017
TID #: N/A	Project Title: TPS65988EVM		
Number: ACS009	Rev: A	Sheet Title: Current Sense	
SVN Rev: Version control disabled	Assembly Variant: 001	Sheet: 10 of 12	
Drawn By: Jacob Ontiveros	File: ACS009_Current_Sense.SchDoc	Size: B	
Engineer: Jacob Ontiveros	Contact: http://www.ti.com/support		



High Current Capable

P5V
PA_VBUS
PA_VAR_DCDC
PB_VBUS
PB_VAR_DCDC

R151/153/177/178
Replace w/ zero Ohm or short

Texas Instruments and/or its licensors do not warrant the accuracy or completeness of this specification or any information contained therein. Texas Instruments and/or its licensors do not warrant that this design will meet the specifications, will be suitable for your application or fit for any particular purpose, or will operate in an implementation. Texas Instruments and/or its licensors do not warrant that the design is production worthy. You should completely validate and test your design implementation to confirm the system functionality for your application.

Orderable: TPS65988EVM	Designed for: TI NDA Restrictions	Mod. Date: 10/5/2017
TID #: N/A	Project Title: TPS65988EVM	
Number: ACS009	Rev: A	Sheet Title: Debug Headers
SVN Rev: Version control disabled	Assembly Variant: 001	Sheet: 11 of 12
Drawn By: Jacob Ontiveros	File: ACS009_Booster_Connectors.SchDoc	Size: B
Engineer: Jacob Ontiveros	Contact: http://www.ti.com/support	



FID1 FID2 FID3

FID4 FID5 FID6

PCB LOGO
ESD Susceptible

PCB LOGO
EU RoHS Exempt Logo

PCB LOGO
Texas Instruments

PCB LOGO
FCC disclaimer

Label Table	
Variant	Detail
001	TPS65988EVM
002	TPS65987EVM

PCB Number: ACS009
PCB Rev: A

ZZ1
Label Assembly Note
This Assembly Note is for PCB labels only

ZZ2
Assembly Note
These assemblies are ESD sensitive, ESD precautions shall be observed.

ZZ3
Assembly Note
These assemblies must be clean and free from flux and all contaminants. Use of no clean flux is not acceptable.

ZZ4
Assembly Note
These assemblies must comply with workmanship standards IPC-A-610 Class 2, unless otherwise specified.

Orderable: TPS65988EVM	Designed for: TI NDA Restrictions	Mod. Date: 6/21/2017
TID #: N/A	Project Title: TPS65988EVM	
Number: ACS009	Rev: A	Sheet Title: EVM Hardware
SVN Rev: Version control disabled	Assembly Variant: 001	Sheet: 12 of 12
Drawn By: Jacob Ontiveros	File: ACS009_EVM_Hardware.SchDoc	Size: B
Engineer: Jacob Ontiveros	Contact: http://www.ti.com/support	

Texas Instruments and/or its licensors do not warrant the accuracy or completeness of this specification or any information contained therein. Texas Instruments and/or its licensors do not warrant that this design will meet the specifications, will be suitable for your application or fit for any particular purpose, or will operate in an implementation. Texas Instruments and/or its licensors do not warrant that the design is production worthy. You should completely validate and test your design implementation to confirm the system functionality for your application.

