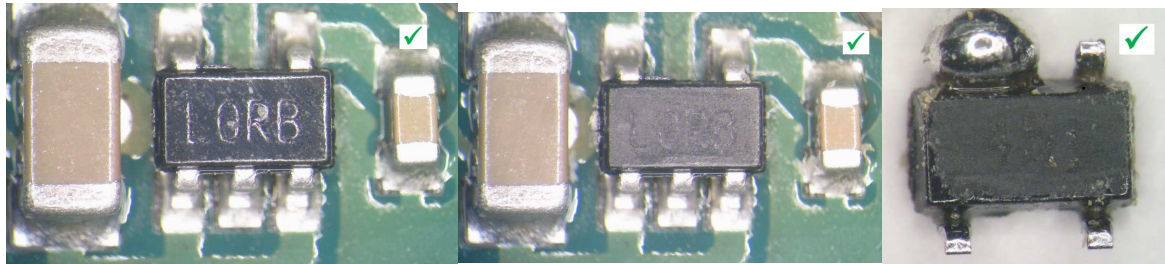


Hi Jason,

enclosed some pictures. (The dirt around the parts is from the coating we normally use on our boards, i marked all pictures from working parts with a green tick and the ones not working with a red cross) I don't reduce the size of the picture to prevent loss of information.

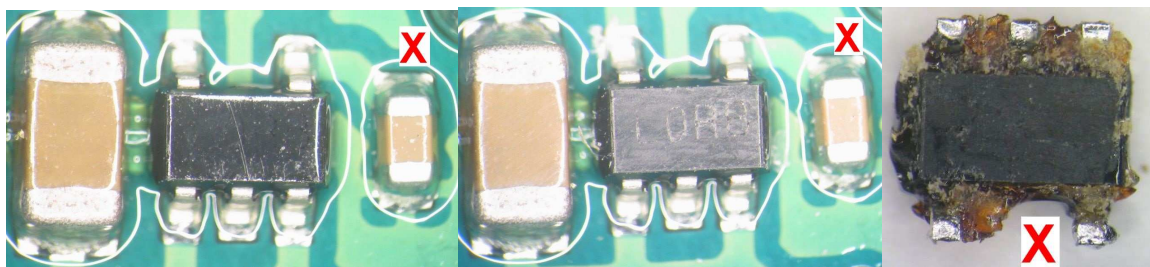
1) Pictures from an old board with working LP2985

Normal view / Coating removed / backside of part

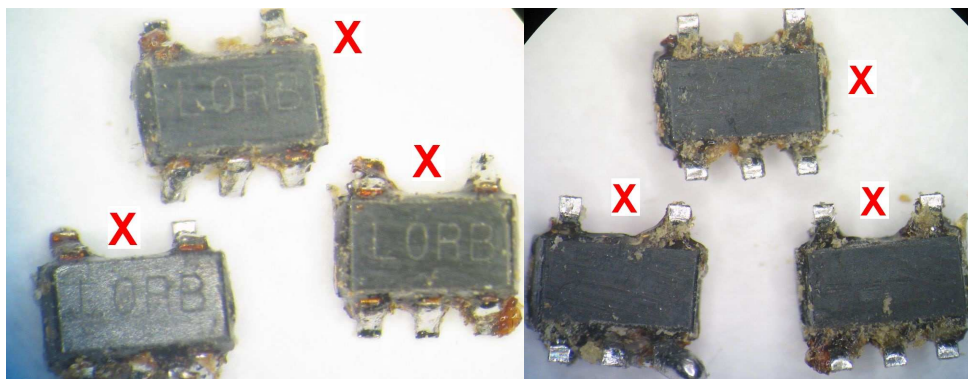


2) Pictures from a new board with not working LP2985

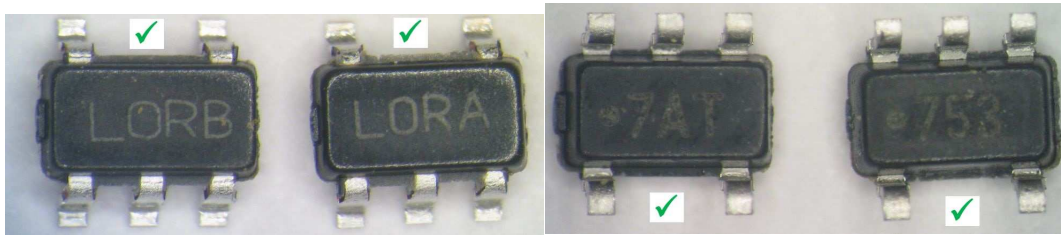
Normal view / Coating removed / backside of part



3) Pictures from removed not working parts



4) Pictures from parts ordered from RS-Components (I and AI Type / both types are working in our circuit)



I'm not sure, but on the not working parts i found no marking on the bottom side.

Regards

Habermeier Stefan