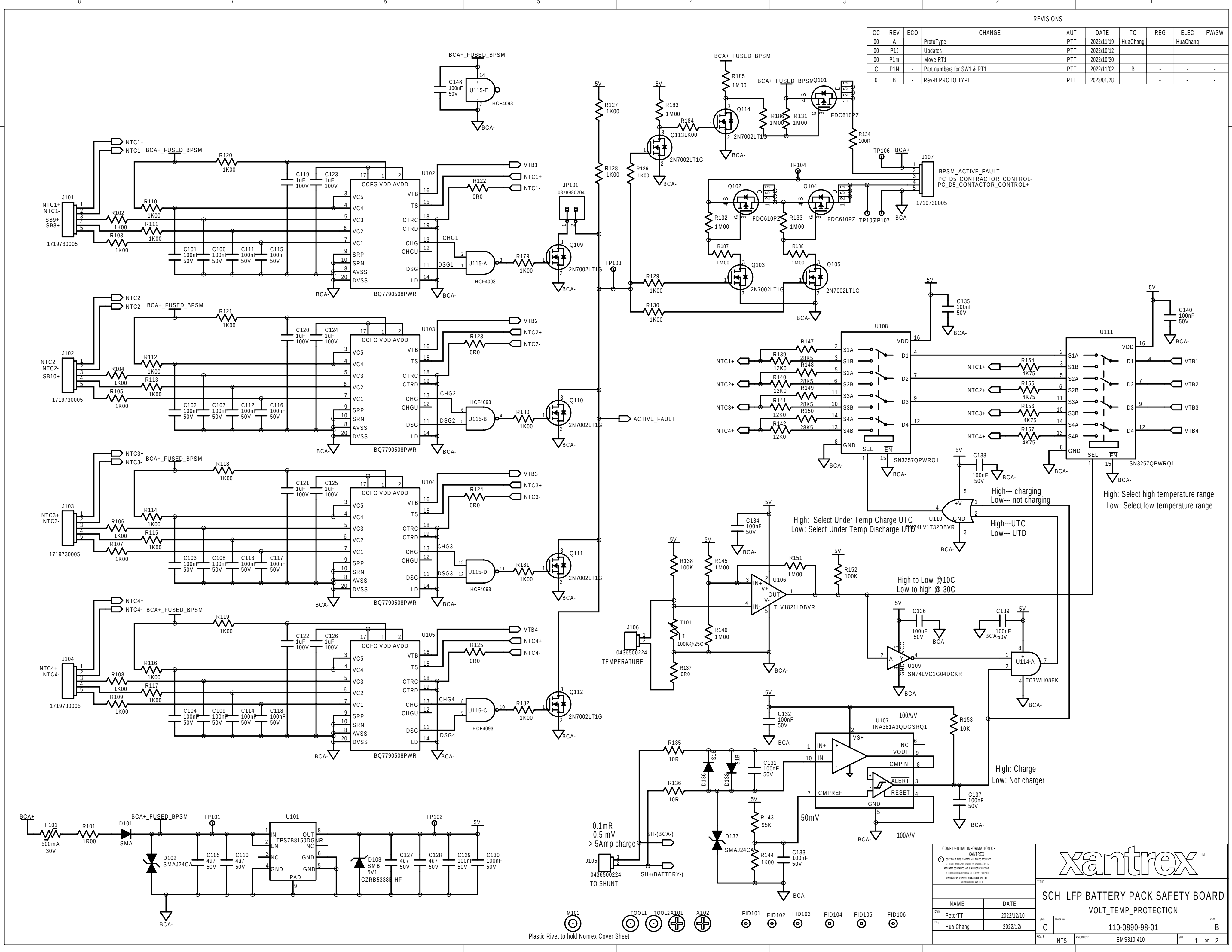


REVISIONS									
CC	REV	ECO	CHANGE	AUT	DATE	TC	REG	ELEC	FW/SW
00	A	----	ProtoType	PTT	2022/11/19	HuaChang	-	HuaChang	-
00	P1J	----	Updates	PTT	2022/10/12	-	-	-	-
00	P1m	----	Move RT1	PTT	2022/10/30	-	-	-	-
C	P1N	-	Part numbers for SW1 & RT1	PTT	2022/11/02	B	-	-	-
0	B	-	Rev-B PROTO TYPE	PTT	2023/01/28	-	-	-	-



CONFIDENTIAL INFORMATION OF XANTREX
 © COPYRIGHT 2011 XANTREX. ALL RIGHTS RESERVED.
 ALL TRADEMARKS ARE OWNED BY THEIR RESPECTIVE OWNERS AND SHALL NOT BE USED OR REPRODUCED IN ANY FORM OR BY ANY MEANS, WITHOUT THE EXPRESS WRITTEN PERMISSION OF XANTREX.

xantrex™

TITLE: **SCH LFP BATTERY PACK SAFETY BOARD**
 VOLT_TEMP_PROTECTION

NAME	DATE
PeterTT	2022/12/10
DES	Hua Chang
SCALE	2022/12/10

SIZE: C
 DWG No: 110-0890-98-01
 REV: B

SCALE: NTS
 PRODUCT: EMS310-410
 SHEET: 1 OF 2

- M101
Plastic Rivet to hold Nomex Cover Sheet
- TOOL1
- TOOL2
- X101
- X102
- FID101
- FID102
- FID103
- FID104
- FID105
- FID106

Over Current Protection This Section Do Not Place

