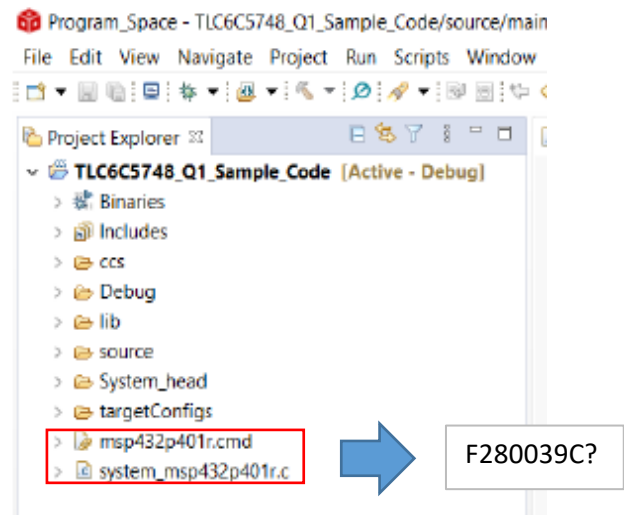


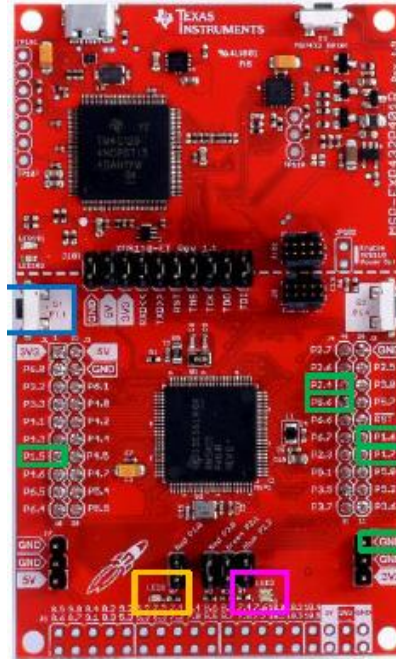
Software setup



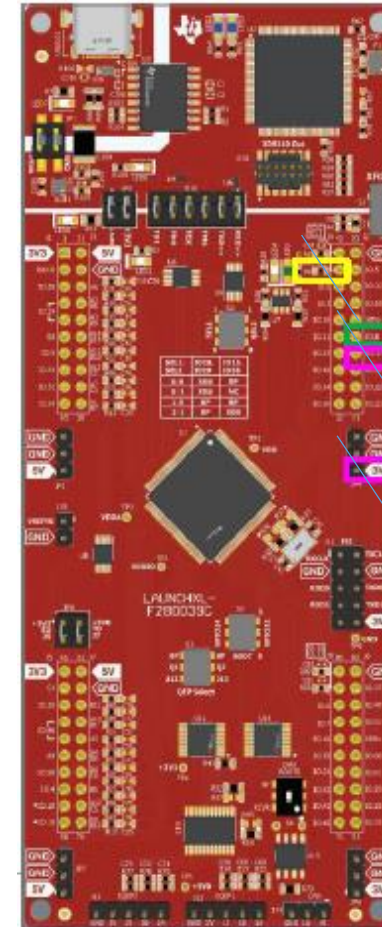
I'm not sure how to change & witch system need to select

Hardware setup

MSP-EXP432P4111



LAUNCHXL-F280039C

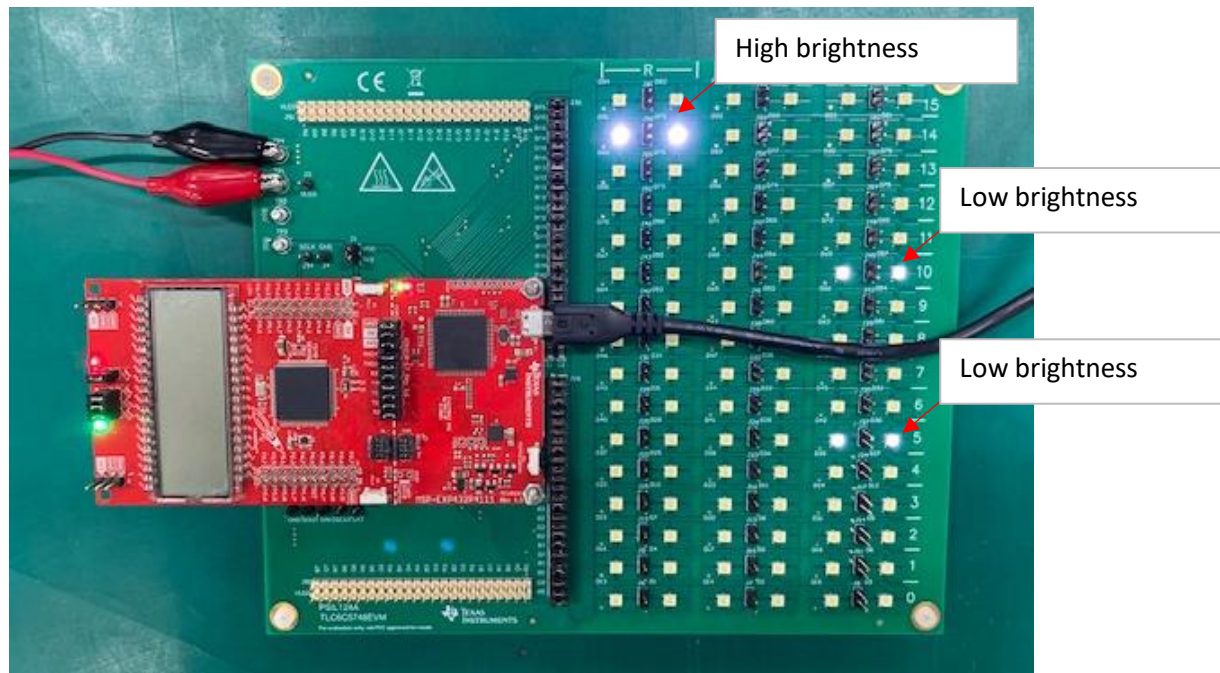


Which pin output is OK.

Sample code

No change from sample code (All led lighting)

Current situation



Signal

5V , 3V3 seems correct from DC-DC supply. (Change outside supply not change situation.)

LAT , SCLK , GSCLK seems correct out put signal by MSP-EXP432P4111.

SIN is high level constant, SOUT is Low level constant.

Which point do you think the problem might occur? IC or MSP-EXP432P411 (or software)