

1. Unseal ---> unseal_full_access ---> enter_cfg_update

Registers

Name	Value	Units	Name	Value	Units	Name	Value	Units	Name	Value	Units
Voltage		mV	Average Power		cW	Max Load Current		mA	Charging Current		mA
Current		mA	At Rate		mA	Max Load Time to Em...		min	BTP Discharge Set		mAh
Temperature		de...	At Rate Time to Empty		min	Raw Coulomb Count		de...	BTP Charge Set		mV
Relative State of Char...		%	Average Time to Empty		min	Internal Temperature			EDV Threshold		mV
Remaining Capacity		mAh	Average Time to Full		min	Cycle Count			CEDV RemCap		mV
Full Charge Capacity		mAh	Standby Current		mA	State of Health		%	Smooth RemCap		mV
Average Current		mA	Standby Time to Empty		min	Charging Voltage		mV	Smooth Current		mA

Bit Registers

Name	Value	Bit7	Bit6	Bit5	Bit4	Bit3	Bit2	Bit1	Bit0
Control (high)		RSVD	RSVD	RSVD	RSVD	RSVD	RSVD	RSVD	RSVD
Control (low)		RSVD	RSVD	RSVD	BCA	SNOOZE	BATT_ID2	BATT_ID1	BATT_ID0
Battery Status (L...)		FD	OCVCOMP	OCVFAIL	SLEEP	OTC	OTD	FC	CHGINH
Battery Status (L...)		RSVD	TCA	OCVGD	AUTH_GD	BATTPRES	TDA	SYSDWN	DSG
Operation Status...		RSVD	RSVD	RSVD	RSVD	RSVD	CFGUPDATE	RSVD	RSVD
Operation Status...		BTPINT	SMTH	INITCOMP	VQD	EDV2	SEC1	SEC0	CALMD
Gauging Status...		VQD	EDV2	EDV1	RSVD	RSVD	FCCX	RSVD	RSVD
Gauging Status...		CF	DSG	EDV	RSVD	TC	TD	FC	FD

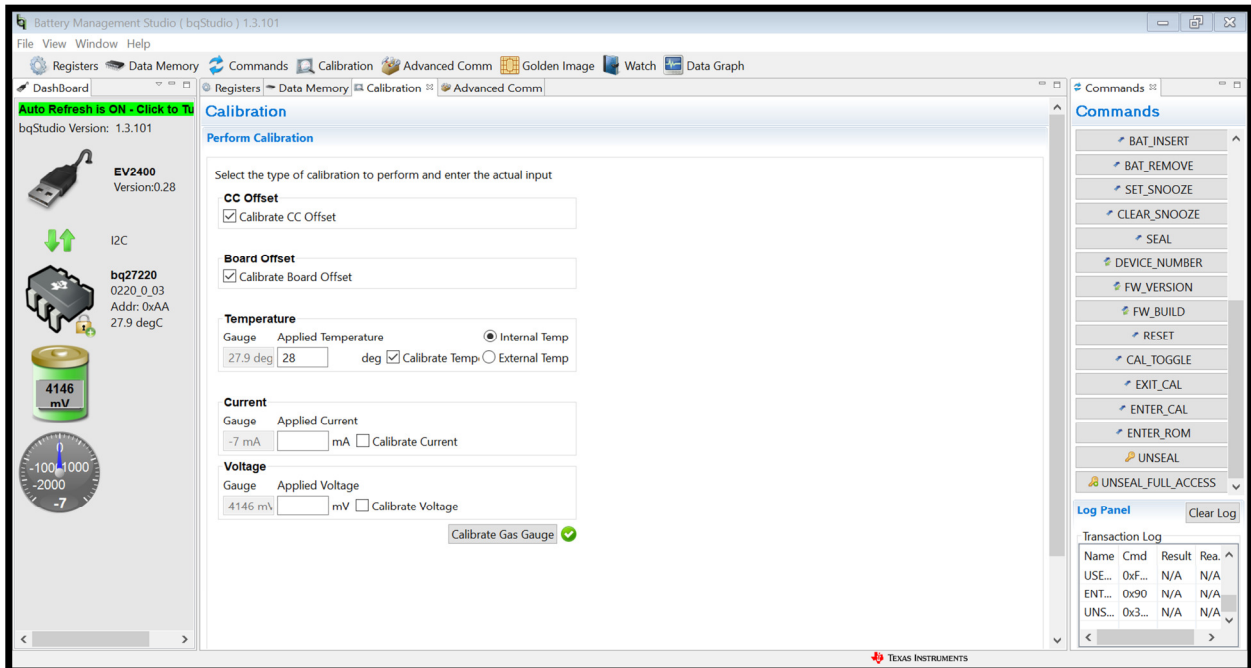
2. calibration : read all

Data Memory

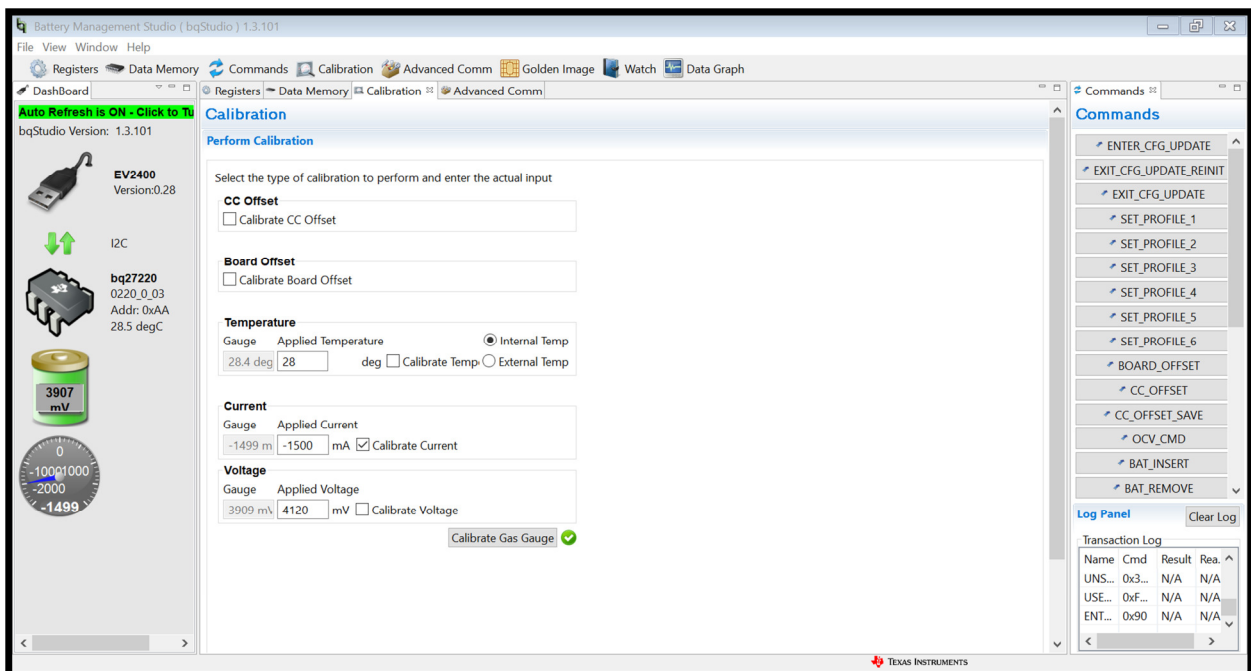
Read/Write Data Memory Contents

Name	Value	Unit
Offset		
Board Offset	0	Counts
Int Temp Offset	0.0	°C
Ext Temp Offset	0.0	°C
Pack V Offset	0	mV
Temperature		
Internal Model Coefficient 1	0	Num
Internal Model Coefficient 2	0	Num
Internal Model Coefficient 3	-13356	Num
Internal Model Coefficient 4	6661	Num
External Model Coefficient 1	-11130	Num
External Model Coefficient 2	19142	Num
External Model Coefficient 3	-19262	Num
External Model Coefficient 4	28203	Num
External Model Coefficient 5	892	Num
External Model Coefficient b 1	328	Num
External Model Coefficient b 2	-805	Num
External Model Coefficient b 3	-2443	Num
External Model Coefficient b 4	4696	Num
RC0	11703	Counts
Voltage Comp Coefficient 1	7320	Num
Voltage Comp Coefficient 2	723	Num
Voltage Comp Coefficient 3	-71	Num
Voltage Comp Input Multiplier	48	Num
Voltage Comp Output Divisor	255	Num
Current		
Filter	239	Num
Deadband	5	mA
CC Deadband	17	294nV
CC Offset	-16	Counts
CC Cal Temp	303.0	°K
CC Gain	0.2380	-
CC Delta	283945.0625	-

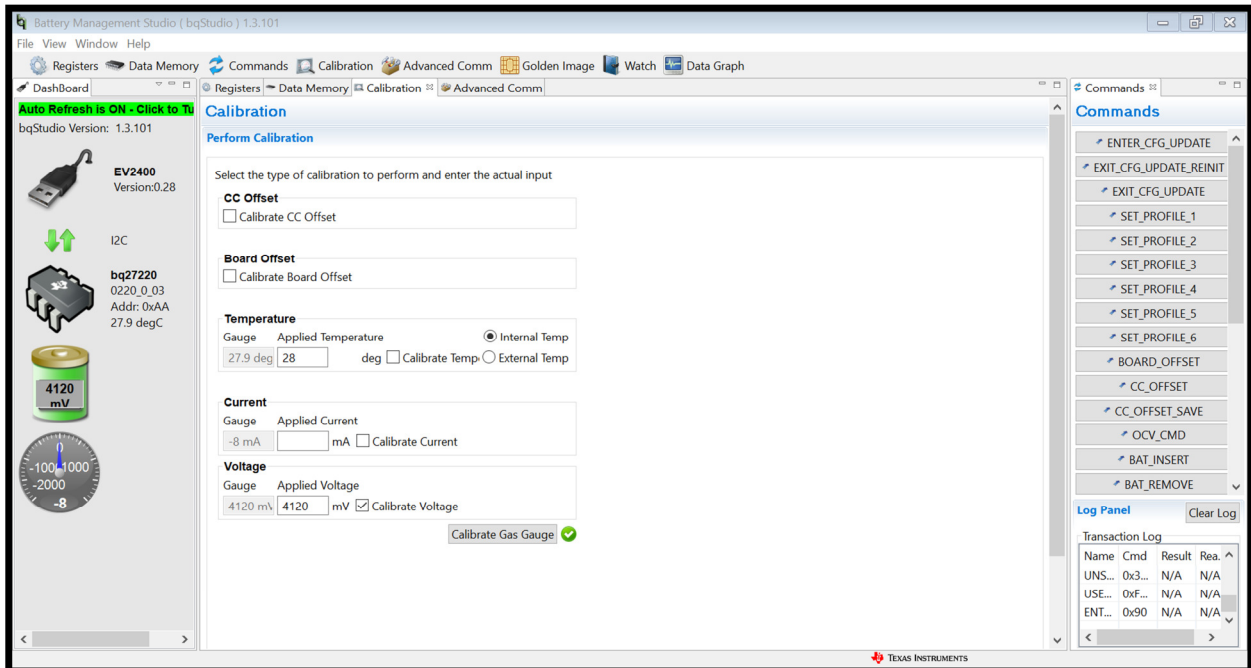
3. calibration: cc offset, board offset, temperature



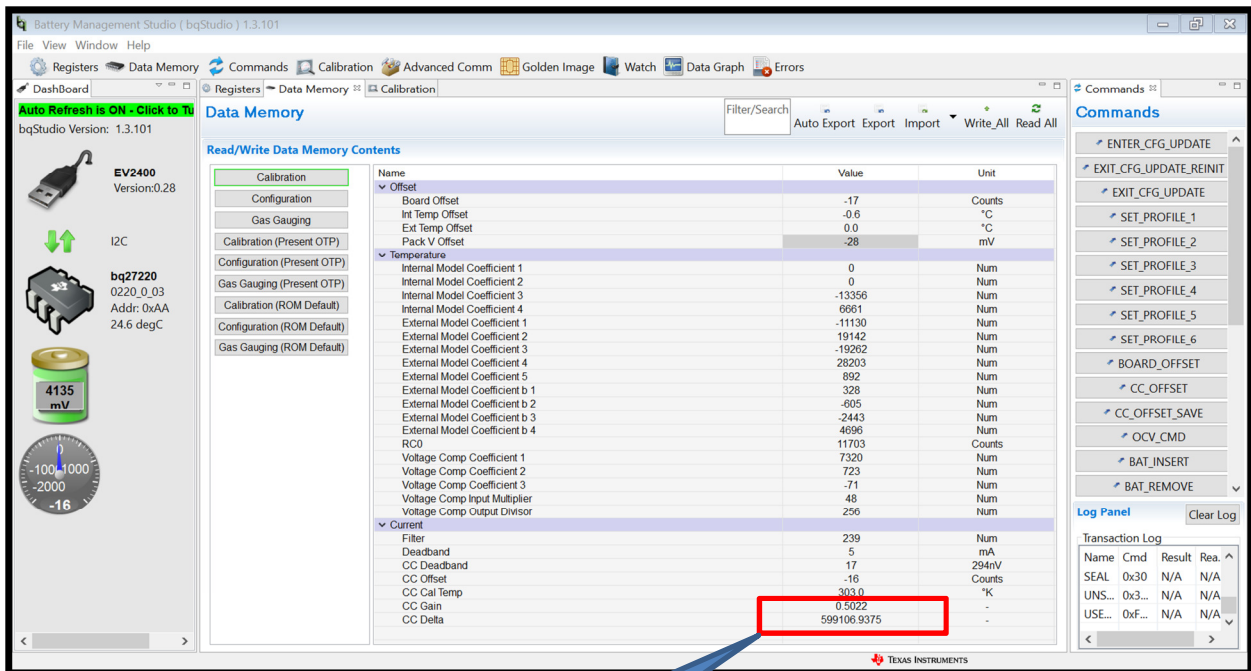
4. calibration: current



5. calibration: voltage



6.read all



The value after calibrated current

7. change three parameter

The screenshot shows the Battery Management Studio (bqStudio) 1.3.101 interface. The 'Data Memory' tab is active, displaying a table of parameters for 'CEDV Profile 1'. The 'Full Charge Capacity' and 'Design Capacity' parameters are highlighted with a red box, both set to 4900 mAh.

Name	Value	Unit
Set Voltage Threshold	4200	mV
Clear Voltage Threshold	4100	mV
Set % RSOC Threshold	100	%
Clear % RSOC Threshold	95	%
CEDV Configuration		
Battery Low %	7.00	%
Learning Low Temp	119	0.1°C
OverLoad Current	1500	mA
Self Discharge Rate	20	0.01%/day
Electronics Load	0	3uA
Near Full	200	mAh
Reserve Capacity	0	mAh
Chg Eff	100	%
Dsg Eff	100	%
CEDV Profile 1		
Gauging Configuration	102a	hex
Full Charge Capacity	4900	mAh
Design Capacity	4900	mAh
Design Voltage	4200	mV
Charge Termination Voltage	100	mV
EMF	3743	-
C0	149	-
R0	867	-
T0	4030	-
R1	316	-
TC	9	-
C1	0	-
Age Factor	0	-
Fixed EDV 0	3031	mV
EDV 0 Hold Time	1	s
Fixed EDV 1	3385	mV
EDV 1 Hold Time	1	s
Fixed EDV 2	3501	mV

8. set battery-id to 4

9. create *.ot.fs , and then program into fg(bq27220) which on my EVM.

10. EVM connect computer via EV2400.

11. check current is incorrect, the other are parameter are ok.

The screenshot shows the Battery Management Studio (bqStudio) 1.3.101 interface. The 'Data Memory' tab is active, displaying a table of parameters. The 'Current' section is expanded, and a red box highlights the 'Filter' value of 239. Another red box highlights the 'CC Delta' value of 283945.0625. A blue callout bubble points to the 'CC Delta' value with the text 'recover to default value'.

Name	Value	Unit
Board Offset	-17	Counts
Int Temp Offset	-0.6	°C
Ext Temp Offset	0.0	°C
Pack V Offset	-28	mV
Internal Model Coefficient 1	0	Num
Internal Model Coefficient 2	0	Num
Internal Model Coefficient 3	-13356	Num
Internal Model Coefficient 4	6661	Num
External Model Coefficient 1	-11130	Num
External Model Coefficient 2	19142	Num
External Model Coefficient 3	-19262	Num
External Model Coefficient 4	28203	Num
External Model Coefficient 5	892	Num
External Model Coefficient b 1	328	Num
External Model Coefficient b 2	-805	Num
External Model Coefficient b 3	-2443	Num
External Model Coefficient b 4	4696	Num
RCO	11703	Counts
Voltage Comp Coefficient 1	7320	Num
Voltage Comp Coefficient 2	723	Num
Voltage Comp Coefficient 3	-71	Num
Voltage Comp Input Multiplier	48	Num
Voltage Comp Output Divisor	256	Num
Filter	239	Num
Deadband	5	mA
CC Deadband	17	294nV
CC Offset	-16	Counts
CC Cal Temp	393.0	°K
CC Gain	0.2380	-
CC Delta	283945.0625	-

recover to default value