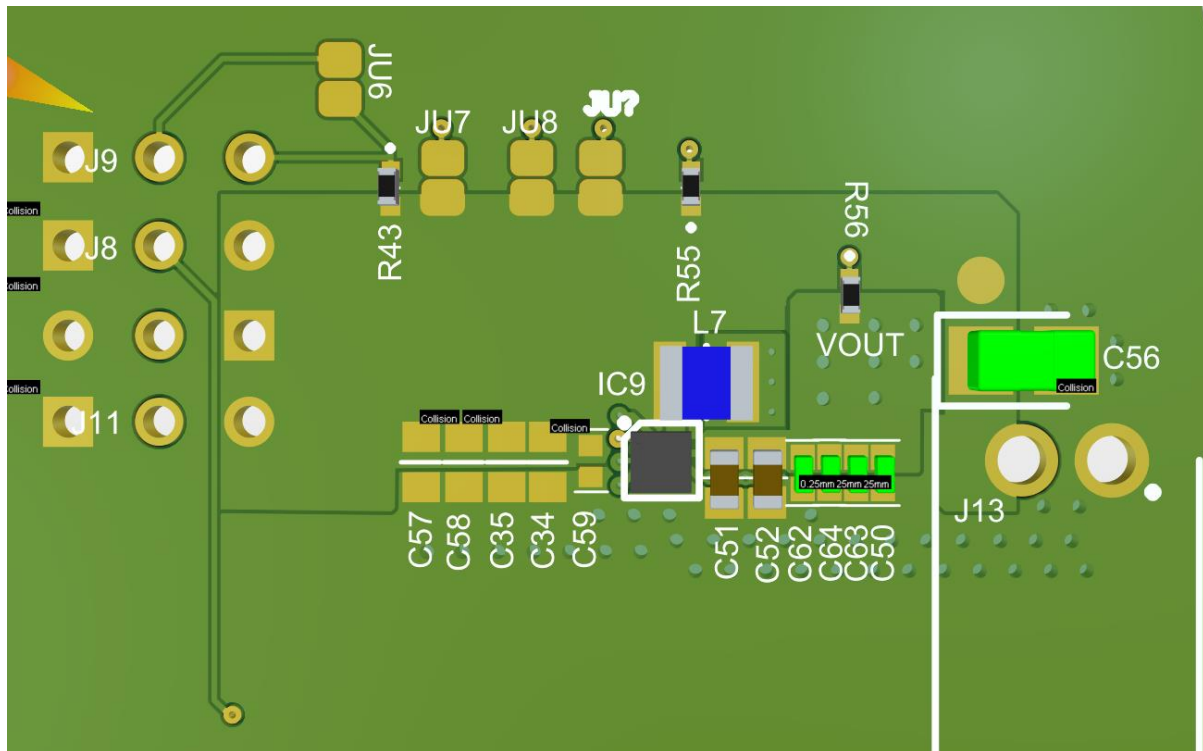


3D View of the Layout



The image shows a detailed PCB layout for the SMT9000 module. Key components and their connections are highlighted:

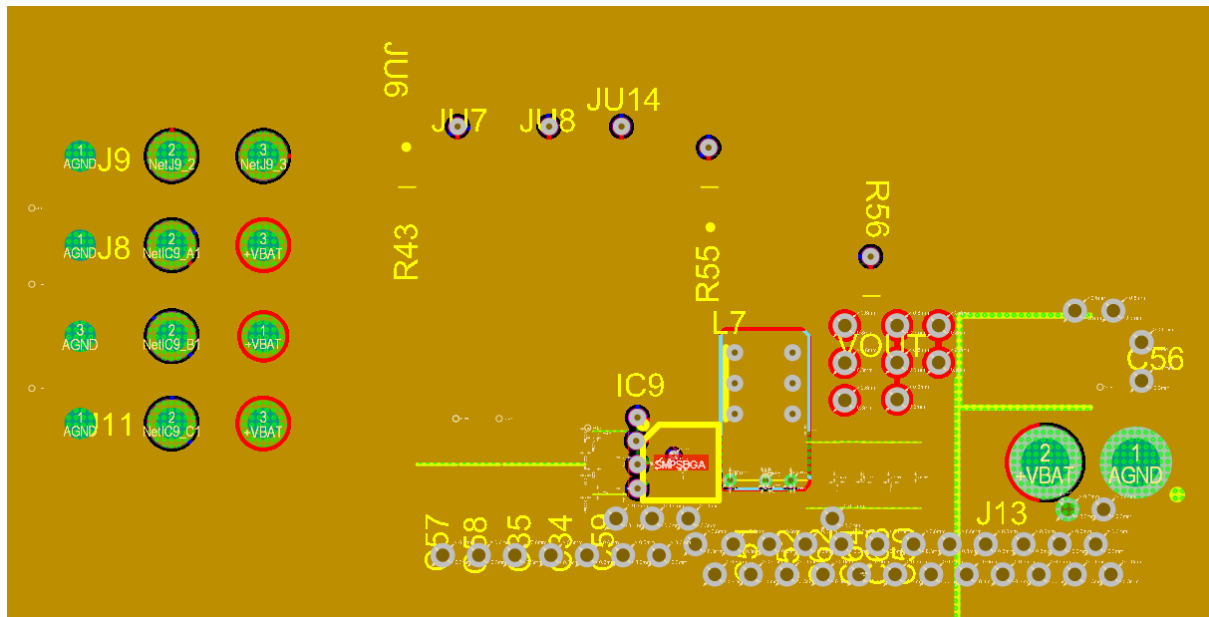
- IC9 (SMT9000):** The main component, highlighted with a red outline. It is a square chip with numerous pins.
- IC10 (SMT9000):** A second SMT9000 chip, highlighted with a blue outline.
- IC11 (SMT9000):** A third SMT9000 chip, highlighted with a green outline.
- IC12 (SMT9000):** A fourth SMT9000 chip, highlighted with a yellow outline.
- IC13 (SMT9000):** A fifth SMT9000 chip, highlighted with a purple outline.
- IC14 (SMT9000):** A sixth SMT9000 chip, highlighted with a brown outline.
- IC15 (SMT9000):** A seventh SMT9000 chip, highlighted with a pink outline.
- IC16 (SMT9000):** An eighth SMT9000 chip, highlighted with a light blue outline.
- IC17 (SMT9000):** A ninth SMT9000 chip, highlighted with a light green outline.
- IC18 (SMT9000):** A tenth SMT9000 chip, highlighted with a light yellow outline.
- IC19 (SMT9000):** An eleventh SMT9000 chip, highlighted with a light purple outline.
- IC20 (SMT9000):** A twelfth SMT9000 chip, highlighted with a light brown outline.
- IC21 (SMT9000):** A thirteenth SMT9000 chip, highlighted with a light pink outline.
- IC22 (SMT9000):** A fourteenth SMT9000 chip, highlighted with a light blue outline.
- IC23 (SMT9000):** A fifteenth SMT9000 chip, highlighted with a light green outline.
- IC24 (SMT9000):** A sixteenth SMT9000 chip, highlighted with a light yellow outline.
- IC25 (SMT9000):** A seventeenth SMT9000 chip, highlighted with a light purple outline.
- IC26 (SMT9000):** An eighteenth SMT9000 chip, highlighted with a light brown outline.
- IC27 (SMT9000):** A nineteenth SMT9000 chip, highlighted with a light pink outline.
- IC28 (SMT9000):** A twentieth SMT9000 chip, highlighted with a light blue outline.
- IC29 (SMT9000):** A twenty-first SMT9000 chip, highlighted with a light green outline.
- IC30 (SMT9000):** A twenty-second SMT9000 chip, highlighted with a light yellow outline.
- IC31 (SMT9000):** A twenty-third SMT9000 chip, highlighted with a light purple outline.
- IC32 (SMT9000):** A twenty-fourth SMT9000 chip, highlighted with a light brown outline.
- IC33 (SMT9000):** A twenty-fifth SMT9000 chip, highlighted with a light pink outline.
- IC34 (SMT9000):** A twenty-sixth SMT9000 chip, highlighted with a light blue outline.
- IC35 (SMT9000):** A twenty-seventh SMT9000 chip, highlighted with a light green outline.
- IC36 (SMT9000):** A twenty-eighth SMT9000 chip, highlighted with a light yellow outline.
- IC37 (SMT9000):** A twenty-ninth SMT9000 chip, highlighted with a light purple outline.
- IC38 (SMT9000):** A thirtieth SMT9000 chip, highlighted with a light brown outline.
- IC39 (SMT9000):** A thirty-first SMT9000 chip, highlighted with a light pink outline.
- IC40 (SMT9000):** A thirty-second SMT9000 chip, highlighted with a light blue outline.
- IC41 (SMT9000):** A thirty-third SMT9000 chip, highlighted with a light green outline.
- IC42 (SMT9000):** A thirty-fourth SMT9000 chip, highlighted with a light yellow outline.
- IC43 (SMT9000):** A thirty-fifth SMT9000 chip, highlighted with a light purple outline.
- IC44 (SMT9000):** A thirty-sixth SMT9000 chip, highlighted with a light brown outline.
- IC45 (SMT9000):** A thirty-seventh SMT9000 chip, highlighted with a light pink outline.
- IC46 (SMT9000):** A thirty-eighth SMT9000 chip, highlighted with a light blue outline.
- IC47 (SMT9000):** A thirty-ninth SMT9000 chip, highlighted with a light green outline.
- IC48 (SMT9000):** A fortieth SMT9000 chip, highlighted with a light yellow outline.
- IC49 (SMT9000):** A forty-first SMT9000 chip, highlighted with a light purple outline.
- IC50 (SMT9000):** A forty-second SMT9000 chip, highlighted with a light brown outline.
- IC51 (SMT9000):** A forty-third SMT9000 chip, highlighted with a light pink outline.
- IC52 (SMT9000):** A forty-fourth SMT9000 chip, highlighted with a light blue outline.
- IC53 (SMT9000):** A forty-fifth SMT9000 chip, highlighted with a light green outline.
- IC54 (SMT9000):** A forty-sixth SMT9000 chip, highlighted with a light yellow outline.
- IC55 (SMT9000):** A forty-seventh SMT9000 chip, highlighted with a light purple outline.
- IC56 (SMT9000):** A forty-eighth SMT9000 chip, highlighted with a light brown outline.
- IC57 (SMT9000):** A forty-ninth SMT9000 chip, highlighted with a light pink outline.
- IC58 (SMT9000):** A fiftieth SMT9000 chip, highlighted with a light blue outline.
- IC59 (SMT9000):** A fifty-first SMT9000 chip, highlighted with a light green outline.
- IC60 (SMT9000):** A fifty-second SMT9000 chip, highlighted with a light yellow outline.
- IC61 (SMT9000):** A fifty-third SMT9000 chip, highlighted with a light purple outline.
- IC62 (SMT9000):** A fifty-fourth SMT9000 chip, highlighted with a light brown outline.
- IC63 (SMT9000):** A fifty-fifth SMT9000 chip, highlighted with a light pink outline.
- IC64 (SMT9000):** A fifty-sixth SMT9000 chip, highlighted with a light blue outline.
- IC65 (SMT9000):** A fifty-seventh SMT9000 chip, highlighted with a light green outline.
- IC66 (SMT9000):** A fifty-eighth SMT9000 chip, highlighted with a light yellow outline.
- IC67 (SMT9000):** A fifty-ninth SMT9000 chip, highlighted with a light purple outline.
- IC68 (SMT9000):** A sixtieth SMT9000 chip, highlighted with a light brown outline.
- IC69 (SMT9000):** A sixty-first SMT9000 chip, highlighted with a light pink outline.
- IC70 (SMT9000):** A sixty-second SMT9000 chip, highlighted with a light blue outline.
- IC71 (SMT9000):** A sixty-third SMT9000 chip, highlighted with a light green outline.
- IC72 (SMT9000):** A sixty-fourth SMT9000 chip, highlighted with a light yellow outline.
- IC73 (SMT9000):** A sixty-fifth SMT9000 chip, highlighted with a light purple outline.
- IC74 (SMT9000):** A sixty-sixth SMT9000 chip, highlighted with a light brown outline.
- IC75 (SMT9000):** A sixty-seventh SMT9000 chip, highlighted with a light pink outline.
- IC76 (SMT9000):** A sixty-eighth SMT9000 chip, highlighted with a light blue outline.
- IC77 (SMT9000):** A sixty-ninth SMT9000 chip, highlighted with a light green outline.
- IC78 (SMT9000):** A seventieth SMT9000 chip, highlighted with a light yellow outline.
- IC79 (SMT9000):** A seventy-first SMT9000 chip, highlighted with a light purple outline.
- IC80 (SMT9000):** A seventy-second SMT9000 chip, highlighted with a light brown outline.
- IC81 (SMT9000):** A seventy-third SMT9000 chip, highlighted with a light pink outline.
- IC82 (SMT9000):** A seventy-fourth SMT9000 chip, highlighted with a light blue outline.
- IC83 (SMT9000):** A seventy-fifth SMT9000 chip, highlighted with a light green outline.
- IC84 (SMT9000):** A seventy-sixth SMT9000 chip, highlighted with a light yellow outline.
- IC85 (SMT9000):** A seventy-seventh SMT9000 chip, highlighted with a light purple outline.
- IC86 (SMT9000):** A seventy-eighth SMT9000 chip, highlighted with a light brown outline.
- IC87 (SMT9000):** A seventy-ninth SMT9000 chip, highlighted with a light pink outline.
- IC88 (SMT9000):** A eightieth SMT9000 chip, highlighted with a light blue outline.
- IC89 (SMT9000):** An eighty-first SMT9000 chip, highlighted with a light green outline.
- IC90 (SMT9000):** An eighty-second SMT9000 chip, highlighted with a light yellow outline.
- IC91 (SMT9000):** An eighty-third SMT9000 chip, highlighted with a light purple outline.
- IC92 (SMT9000):** An eighty-fourth SMT9000 chip, highlighted with a light brown outline.
- IC93 (SMT9000):** An eighty-fifth SMT9000 chip, highlighted with a light pink outline.
- IC94 (SMT9000):** An eighty-sixth SMT9000 chip, highlighted with a light blue outline.
- IC95 (SMT9000):** An eighty-seventh SMT9000 chip, highlighted with a light green outline.
- IC96 (SMT9000):** An eighty-eighth SMT9000 chip, highlighted with a light yellow outline.
- IC97 (SMT9000):** An eighty-ninth SMT9000 chip, highlighted with a light purple outline.
- IC98 (SMT9000):** A ninetieth SMT9000 chip, highlighted with a light brown outline.
- IC99 (SMT9000):** A hundredth SMT9000 chip, highlighted with a light pink outline.
- IC100 (SMT9000):** A hundred and first SMT9000 chip, highlighted with a light blue outline.
- IC101 (SMT9000):** A hundred and second SMT9000 chip, highlighted with a light green outline.
- IC102 (SMT9000):** A hundred and third SMT9000 chip, highlighted with a light yellow outline.
- IC103 (SMT9000):** A hundred and fourth SMT9000 chip, highlighted with a light purple outline.
- IC104 (SMT9000):** A hundred and fifth SMT9000 chip, highlighted with a light brown outline.
- IC105 (SMT9000):** A hundred and sixth SMT9000 chip, highlighted with a light pink outline.
- IC106 (SMT9000):** A hundred and seventh SMT9000 chip, highlighted with a light blue outline.
- IC107 (SMT9000):** A hundred and eighth SMT9000 chip, highlighted with a light green outline.
- IC108 (SMT9000):** A hundred and ninth SMT9000 chip, highlighted with a light yellow outline.
- IC109 (SMT9000):** A hundred and tenth SMT9000 chip, highlighted with a light purple outline.
- IC110 (SMT9000):** A hundred and eleventh SMT9000 chip, highlighted with a light brown outline.
- IC1**

The green area is the switching area which is only connected to L7 and C3,C4 (switching nodes)

The Beige area is the Voltage Output area being fanned out Layer 3 – The Power Plane

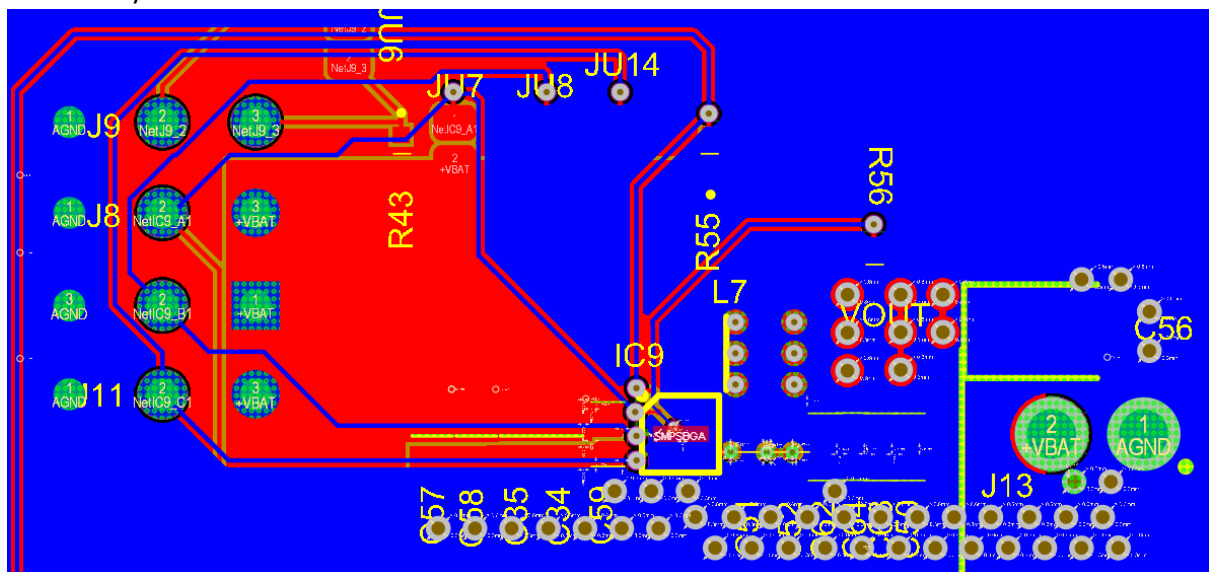
The black area is where the Vout is fanned out

Layer 2 – Mid Layer



Under L7 is the switching polygon

Bottom Layer



Ground Layer