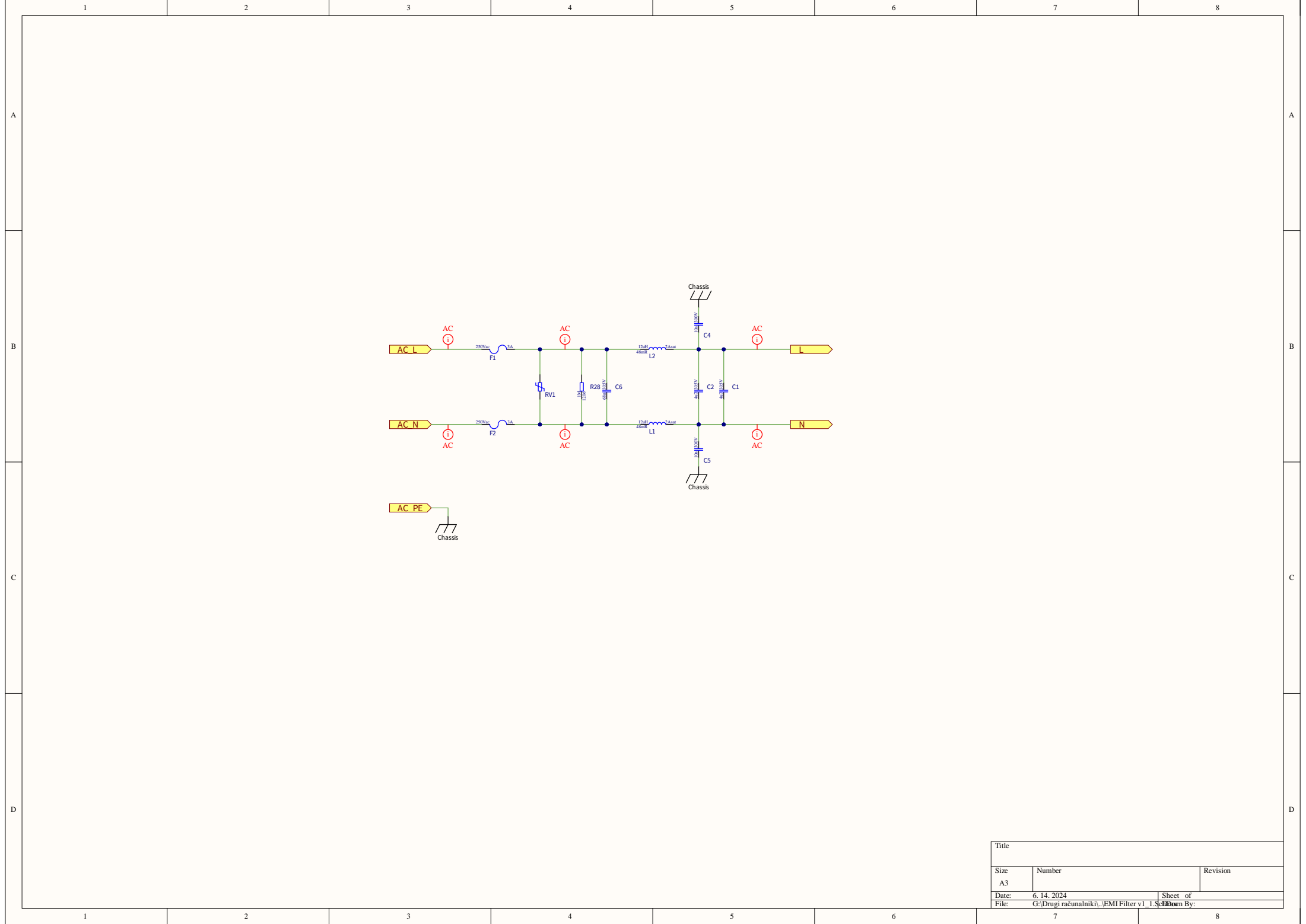
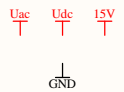
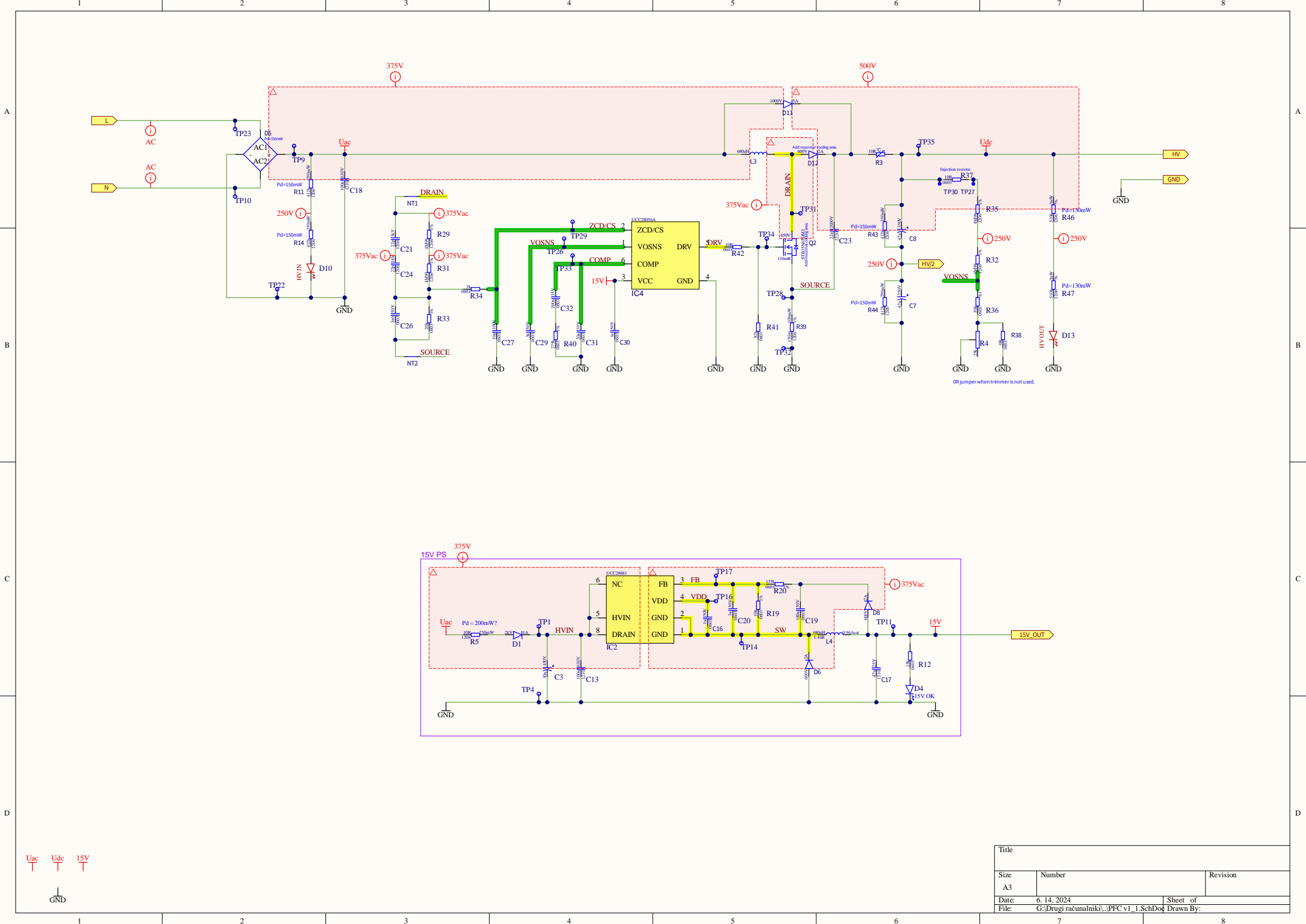


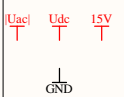
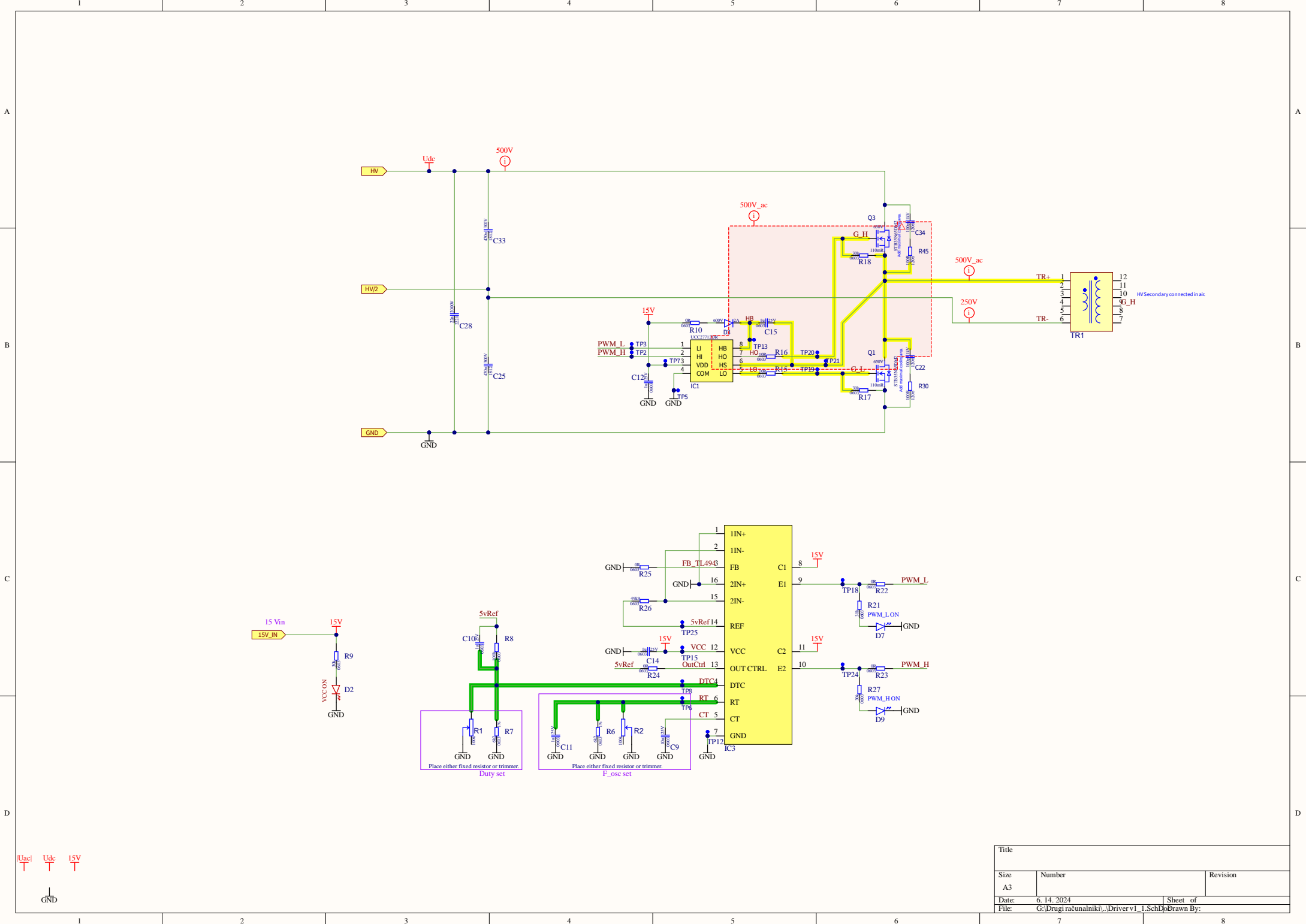
Title		
Size A3	Number	Revision
Date: 6.14.2024	Sheet of	Drawn By:
File: G:\Drugi računalki\Architecture v1_1_1	Number	By:



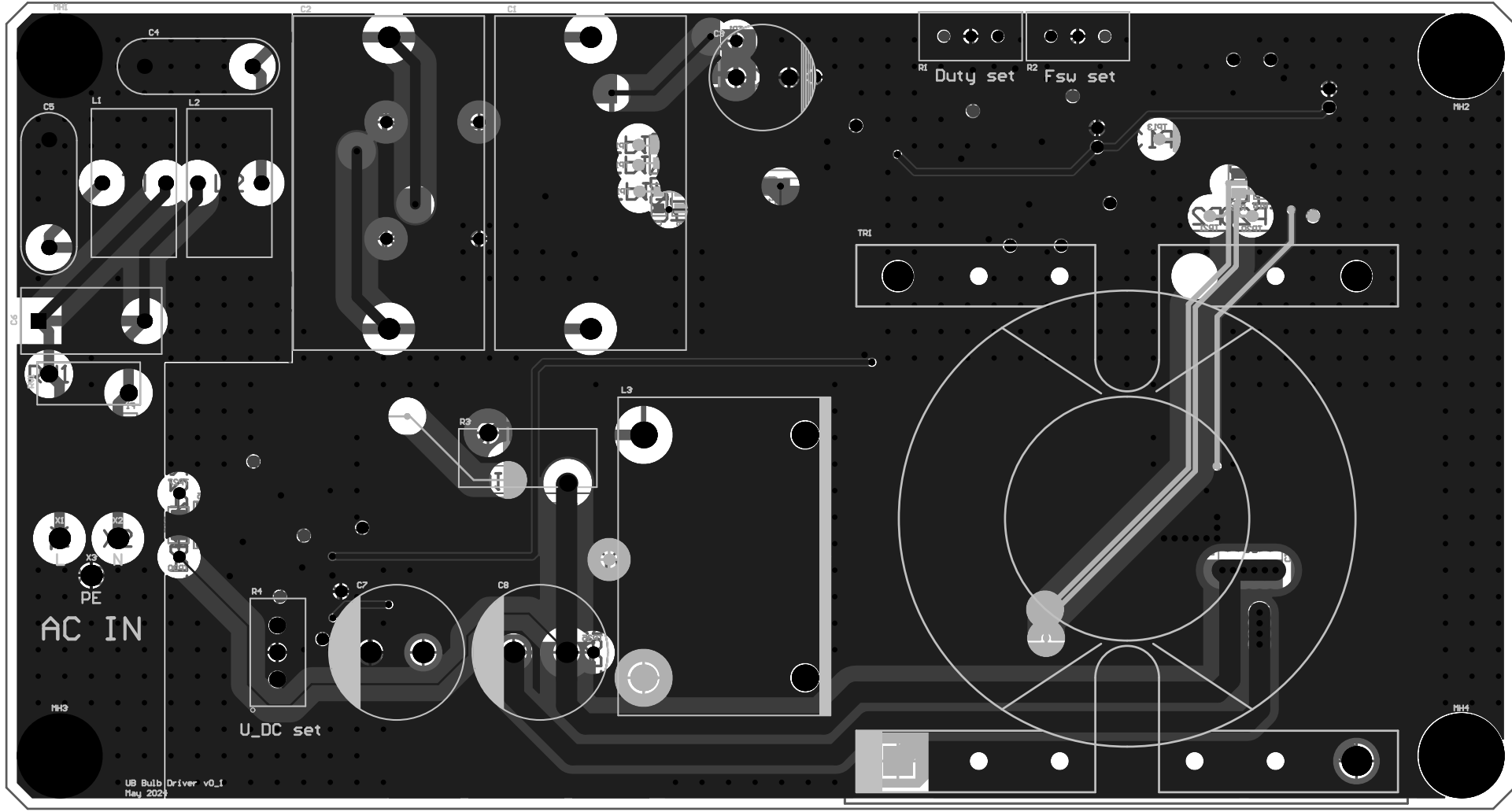
Title		
Size A3	Number	Revision
Date: 6.14.2024	Sheet of	Drawn By:
File: G:\Drugi računalnik\...EMI Filter v1.1.Sch	8	



Title		
Size	Number	Revision
A3		
Date:	6.14.2024	Sheet of
File:	G:\Drugi računalnik\i_PFC v1_1.SchDoc	Drawn By:



Title		
Size	Number	Revision
A3		
Date:	6.14.2024	Sheet of
File:	G:\Drugi računalniki\Driver v1_L.SchDo	Drawn By:



UB Bulb Driver v0.1
May 2024

MLI
MLS

Description	Designator	Quantity	Supplier 2	Supplier Part Number 2	Footprint
Cap X2 4.7uF 305V	C1, C2	2	LCSC	C20611522	B32924C3475M000
Generic polarized cap symbol	C3	1	LCSC	C383037	ELKO 10x20mm
Cap Y2 10n 300Vac	C4, C5	2	LCSC	C2832521	VY2103M59V5V563V0
Cap X2 68nF 305V	C6	1	LCSC	C125425	B32921C3683K000
Generic polarized cap symbol	C7, C8	2	LCSC	C6718371	ELKO 16x20
	C9	1	LCSC	C525264	CAP_0603
	C10, C11, C12, C14, C15	5	LCSC	C59302	CAP_0603
	C13	1	LCSC	C2905788	CAP_1210
	C16, C30	2	LCSC	C5199872	CAP_0603
	C17	1	LCSC	C7432791	CAP_1210
	C18	1	LCSC	C1322392	CAP_1210
	C19	1	LCSC	C2760543	CAP_0603
	C20, C29	2	LCSC	C107088	CAP_0603
	C21, C24	2	LCSC	C5137630	Cap_1206
	C22, C34	2	LCSC	C5137646	Cap_1206
	C23, C28	2	LCSC	C692325	CAP_2220
	C25, C33	2	LCSC	C692318	CAP_1812
	C26	1	LCSC	C376832	CAP_0603
	C27	1	LCSC	C106245	CAP_0603
	C31	1	LCSC	C5137632	CAP_0603
	C32	1	LCSC	C344195	CAP_0603
General Diode symbol	D1	1	LCSC	C668948	SMA
Generic red LED symbol	D2, D10, D13	3	LCSC	C965799	DIODE_0603
Diode Fast 2A 600V 35ns	D3, D6, D8, D12	4	LCSC	C3011116	SMAF
Generic blue LED symbol	D4, D7, D9	3	LCSC	C965807	DIODE_0603
Bridge rectifier 3A 1kV	D5	1	LCSC	C525744	DB307S
Diode 5A 1kV	D11	1	LCSC	C2922191	DO-214AB
Fuse SMD 250V ac 3A	F1, F2	2	LCSC	C2994773	JFC2410-1300TS
Gate driver HB 700V	IC1	1	LCSC	C485818	SOIC8
700-V Lowest Quiescent current off line switcher	IC2	1	LCSC	C544970	SOIC-7
Switching Controller, Voltage-mode, 0.25A, 300kHz Switching Freq-Max, BiPolar, PDSO16	IC3	1	LCSC	C19882	SOIC-16
PFC TMI C	IC4	1	LCSC	C2859064	SOT-23-6
Power inductor 12uH 2A 48mR, PFC Inductor custom, Magnetics 0070932A7, 680uH, PO50 Coil former vertical	L1, L2, L3, TR1	4			SNS-1700, Toroid on base, PO50 Coil Former - Vertical
Inductor 680uH 820mA 1.46R	L4	1	LCSC	C2455611	CDRH127NP-681MC
Nmos 650V 32A 110mR D2PAK	Q1, Q2, Q3	3	LCSC	C5268669	TO-263-3 GDS
TrimPot 100k 23 Turns	R1, R2	2	LCSC	C118963	T93YA104K120
NTC 10R 3A 7.5mmP THT	R3	1	LCSC	C2909130	10D-11
Trimpot, 25 kohm, Through Hole, 20 Turns, Multi Turn, Cermet, Top Adjust.	R4	1	LCSC	C118932	RES-67WR10KLF
	R5	1	LCSC	C17903	RES_1206
	R6, R7	2	LCSC	C4260	RES_0603
	R8	1	LCSC	C2907088	RES_0603
	R9, R17, R18, R21, R27	5	LCSC	C18681	RES_0603
	R10, R13, R22, R23, R24, R25	6	LCSC	C15402	RES_0603
	R11, R14, R43, R44	4	LCSC	C247265	RES_1206
	R12	1	LCSC	C22809	RES_0603
	R15, R16, R37, R42	4	LCSC	C22859	RES_0805
	R19	1	LCSC	C25804	RES_0603
	R20	1	LCSC	C1509632	RES_0603
	R26, R36	2	LCSC	C23184	RES_0603
	R28	1	LCSC	C26124	RES_1206
	R29, R31, R32, R35	4	LCSC	C84087	RES_1206
	R30, R45	2	LCSC	C25348	RES_1206
	R33	1	LCSC	C4184	RES_0603
	R34	1	LCSC	C4211	RES_0603
	R38	1	LCSC	C21189	RES_0603
	R39	1	LCSC	C2683383	RES_1206
	R40	1	LCSC	C5126128	RES_0603
	R41	1	LCSC	C23254	RES_0603
	R46, R47	2	LCSC	C17990	RES_1206
Varistor 250Vac 505V clamp	RV1	1	LCSC	C2761656	RM14D121KD11E100