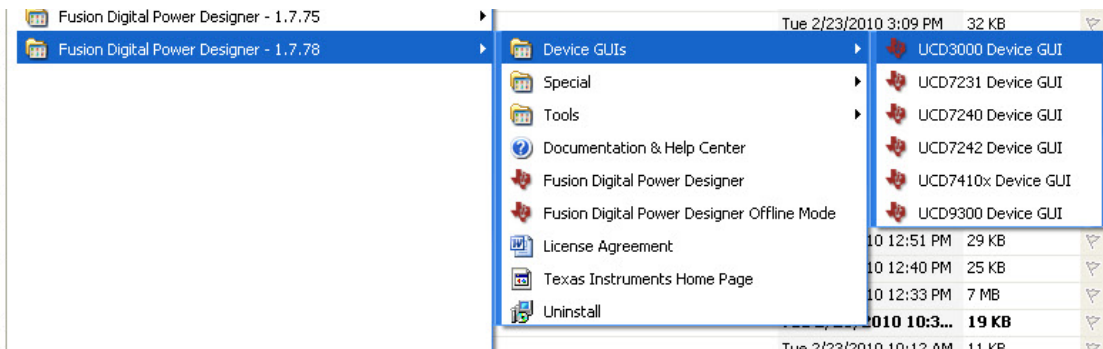
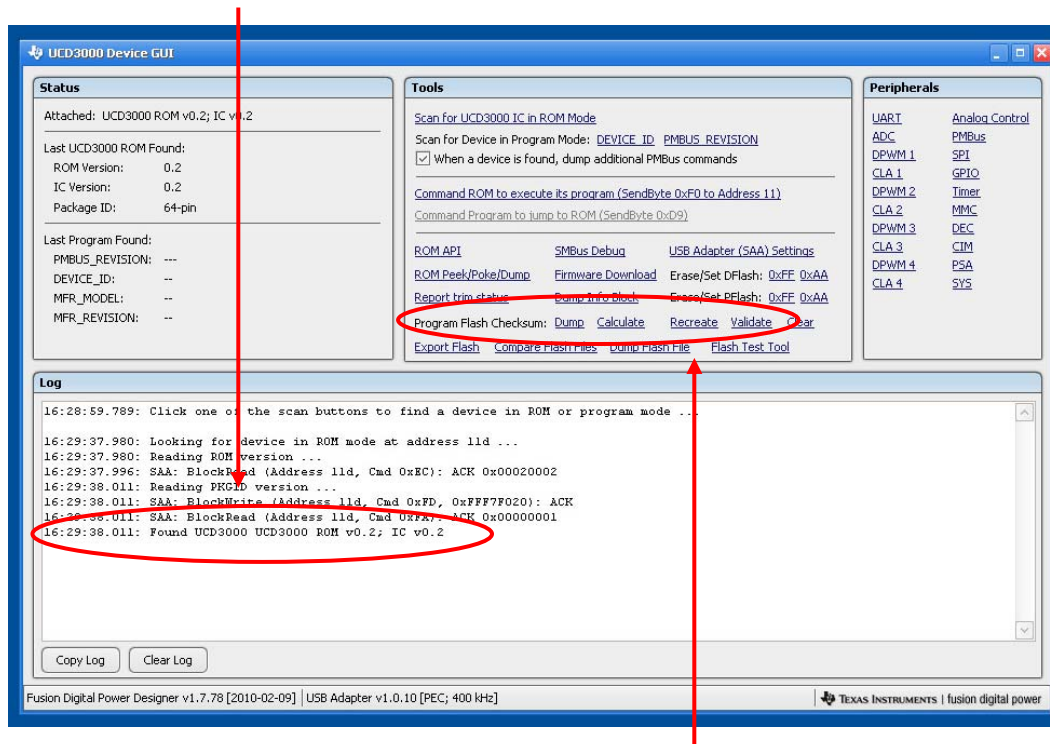


Procedure for Recreating the Program Flash Checksum for UCD9xxxx Devices which fail to execute program code when removed from the Fusion Digital Power Designer GUI

1. Close any open instances of the Fusion Digital Power Designer
2. Cycle the input voltage to the UCD9xxxx power controllers or sequencers, the device with the issue needs to be in the non-functioning state.
3. Navigate to **Start → All Programs → Fusion Digital Power Designer → Device GUIs → UCD3000 Device GUI**
 - a. Depending on GUI version, the Tool may be labeled **UCD3xxx Device GUI** or **UCD3xxx & UCD9xxx Device GUI**, they all function the same



4. Under the **Tools** section click on **Scan for UCD3000 IC in ROM Mode** and the following screen should be displayed if the device is missing the Program Flash Checksum.
 - a. Function may be labeled **Scan Device in ROM Mode** depending on GUI version.



5. Near the bottom of the **Tools** section is **Program Flash Checksum:** press the Calculate link and compare the checksum calculation against the provided checksum value. If they match, click the option to **Recreate** the checksum (storing an invalid checksum may brink the device).
6. When the GUI Log has indicated that the PFlash checksum has been created, close the GUI
7. Disconnect the PMBus interface
8. Power cycle the board and it should now execute the program code