

FILED0 / MID29:  
 \*\*Full High: MIT Management (MDC/MDIO) ID is 29.  
 \*\*Full Low: MIT Management (MDC/MDIO) ID is 0.  
 \*\*Full High or Keep Floating

FILED0 / RESERVED: Must Full High or Keep Floating

FILED0 / SW1/SEL:  
 \*\*Full High: I2C Interface(Slave)  
 \*\* Full Low: I2C Interface(Slave)

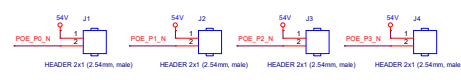
FILED0 / SW2/SEL:  
 \*\*Full High: Enable embedded PHY  
 Full Low: Disable embedded PHY

FILED0 / RESERVED: Must Full Low

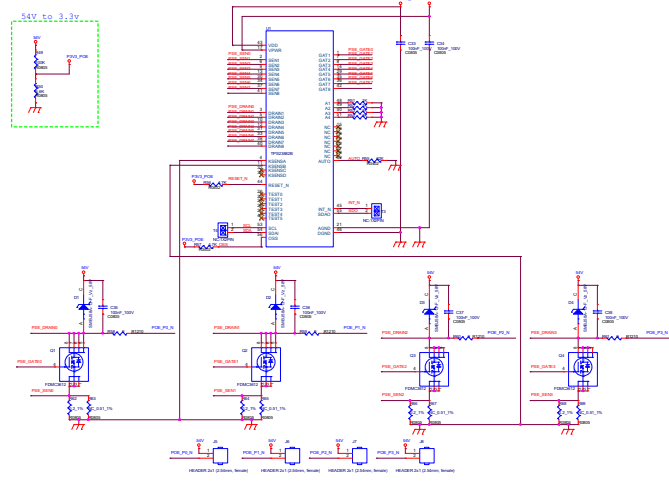
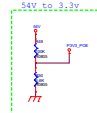
FILED0 / EN\_PWRLIGHT:  
 \*\*Full High: Enable LED Light when Power On or Reset  
 \*\* Full Low: Disable LED Light when Power On or Reset

FILED0 / DISAUTOLoad:  
 \*\* Full High: Disable Auto load EEPROM  
 Full Low: Enable Auto load EEPROM

FILED0 / DIS\_S053:  
 \*\*Full High: Enable S053  
 \*\* Full Low: Disable S053



File	<Title>	
Rev	Document Number	Rev
C	<Doc>	<Rev>
Date	Thursday, March 02, 2017	Sheet 1 of 2



Rev	Desc	Date
1	Initial	