





POWER TRACE

SIGNAL

- 5V 
- 3.3V 
- 24V 
- 5/24V 

DC JACK  
24V 5A

HUB BOARD CONNECTOR  
TO MAIN BOARD

Power Switch  
PQ18,22,28

PD Controller  
CCG2

BUCK  
Vout = 5V  
TPS54531

BUCK  
Vout = 3.3V  
TPS62086

USB HUB 1x4  
USB TO LANx1  
LAN9514

CURRENT LIMITED 1  
Vout = 5V  
Iout = 1A each channel  
TPS2065

CURRENT LIMITED 1  
Vout = 5V  
Iout = 2A each channel  
TPS2001C\_2A

USB CON1  
TYPE A

USB CON2  
TYPE A

USB CON3  
TYPE A

USB CON4  
TYPE A

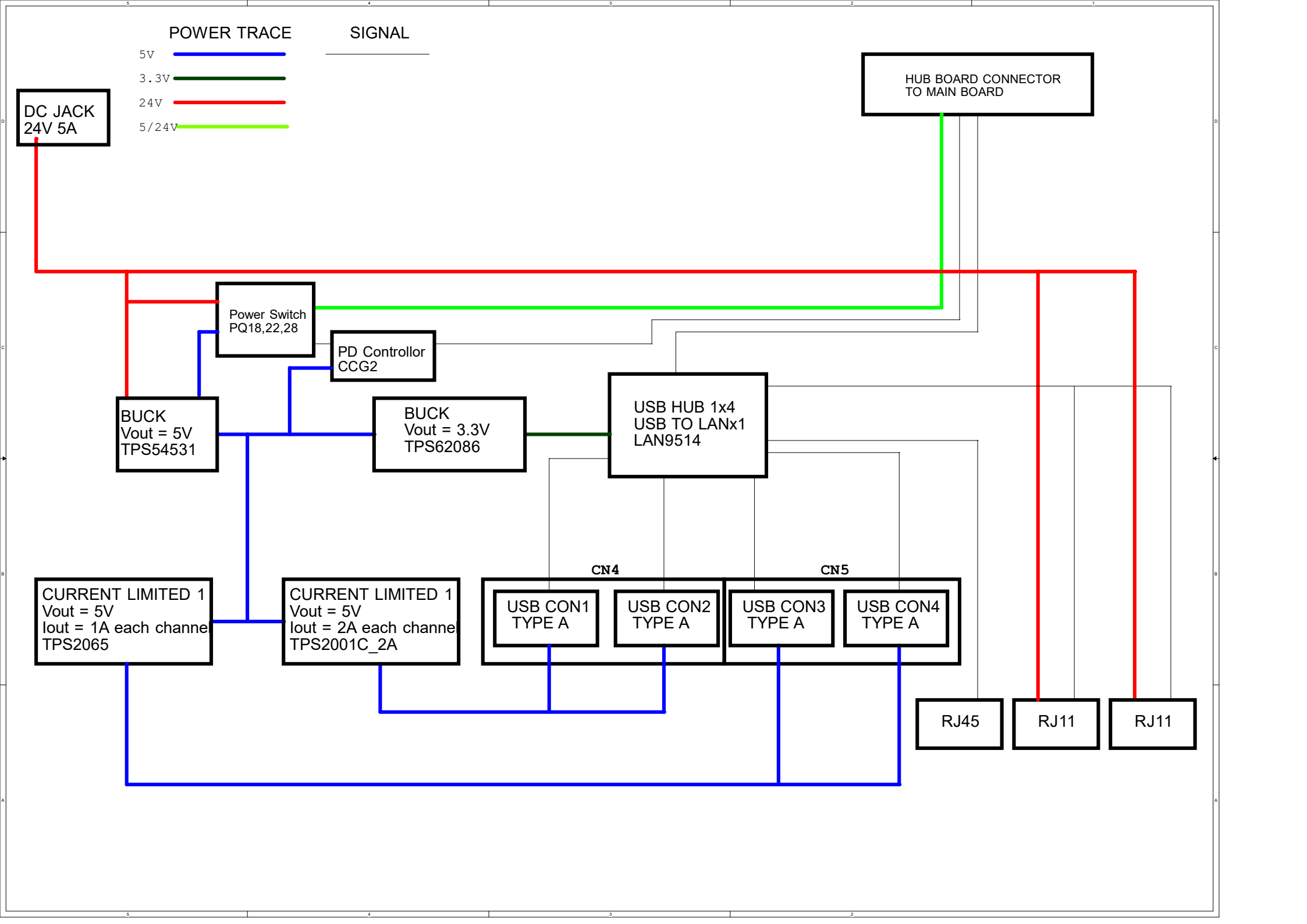
CN4

CN5

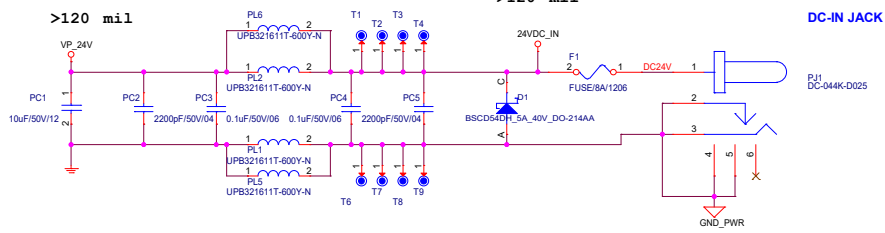
RJ45

RJ11

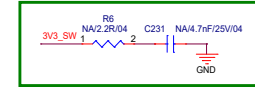
RJ11



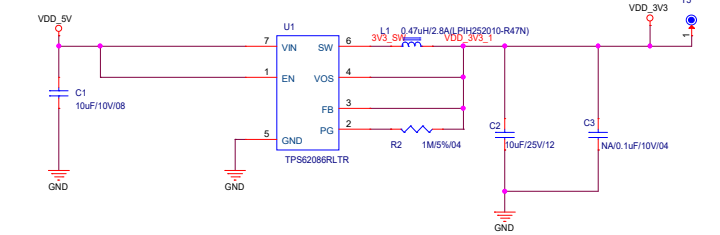
# DC JACK



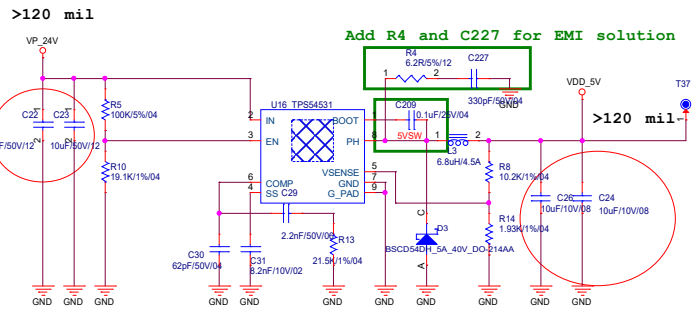
Reserve for EMI



# 5V to 3.3V BUCK

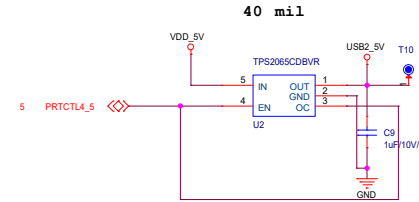


# 24V TO 5V 4A BUCK to HUB only



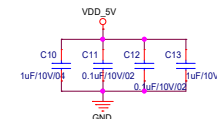
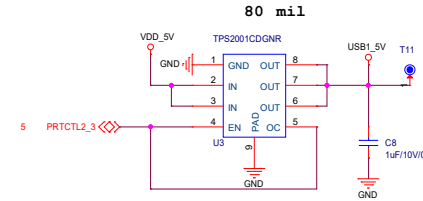
# CURRENT LIMIT

2 USB host ports have a combined 1A current

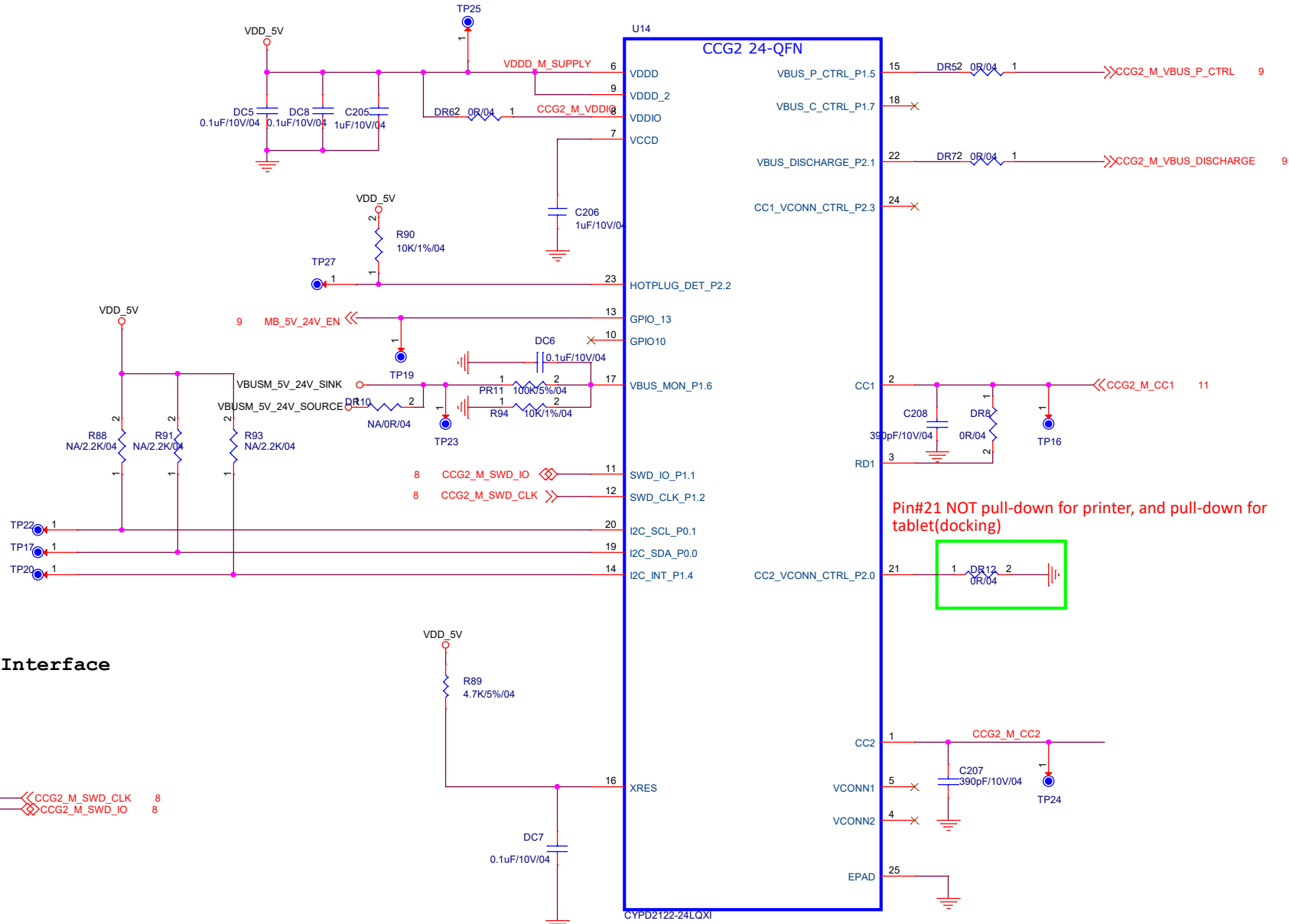


# CURRENT LIMIT

2 USB host ports have a combined 2A current

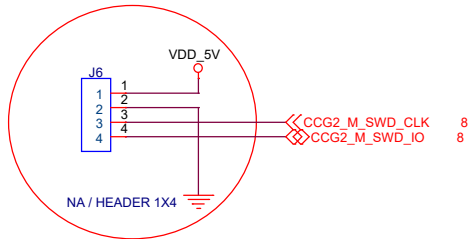


# CCG2 to MB

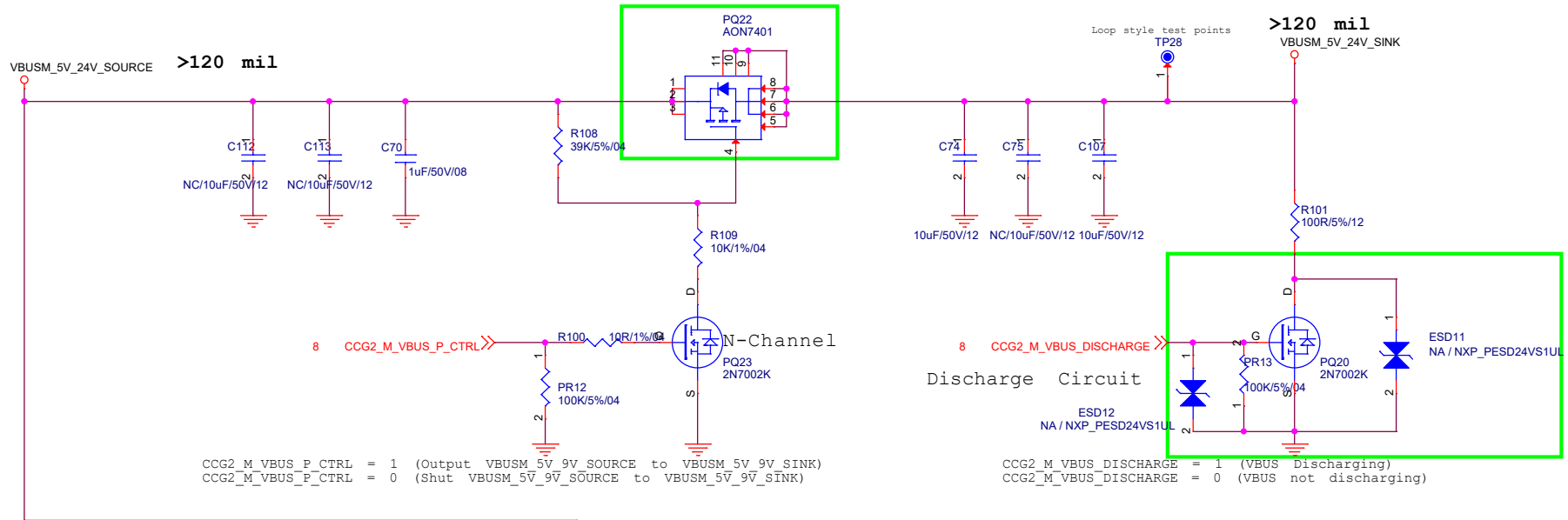


Pin#21 NOT pull-down for printer, and pull-down for tablet(docking)

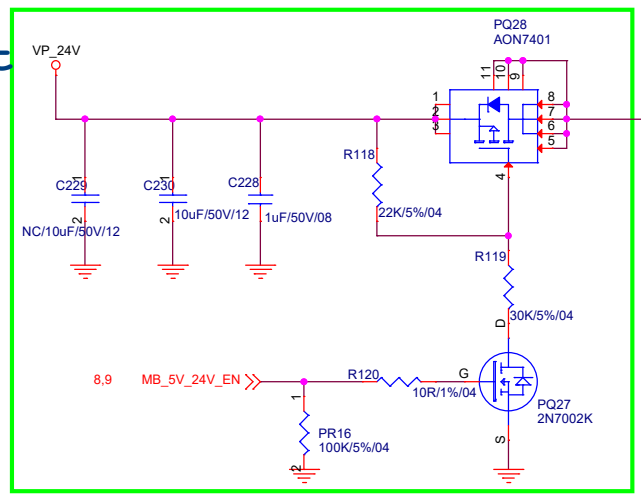
## CCG2 SWD Programming Interface



# PD switch output to MB



# 24V Input



# 5V Input

