

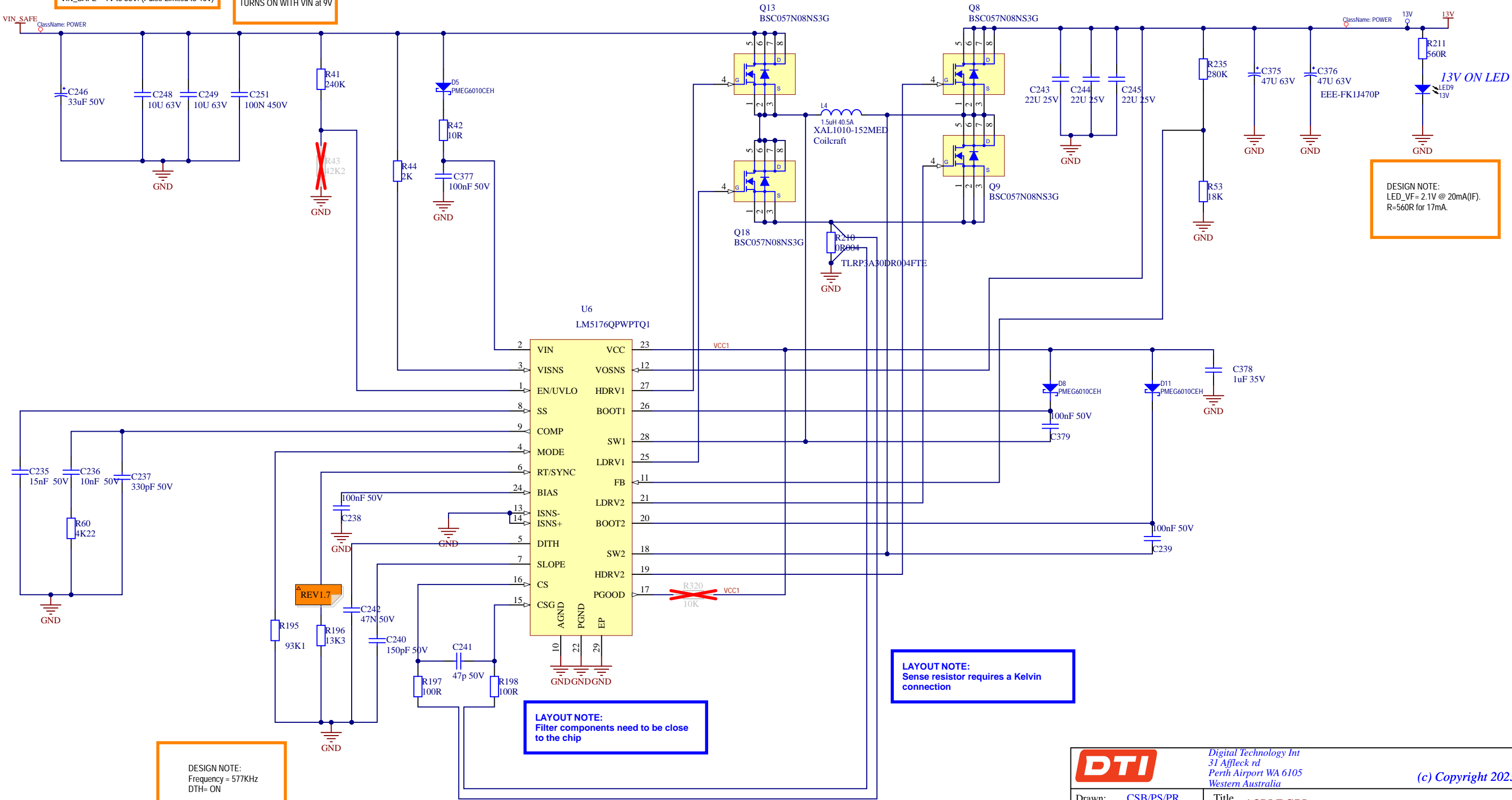
# 13V PSU

Vin = 9-36V, Vout = 13V @ 15A

DESIGN NOTE:  
VIN - 6V TO 40V  
VOUT - 13.2V, 15A  
Total Load = 7.33

DESIGN NOTE:  
VIN\_SAFE = 9V to 36V. (Pulse Limited to 40V)

DESIGN NOTE:  
TURNS ON WITH VIN at 9V



DESIGN NOTE:  
LED\_VF = 2.1V @ 20mA(IF).  
R=560R for 17mA.

LAYOUT NOTE:  
Sense resistor requires a Kelvin connection

LAYOUT NOTE:  
Filter components need to be close to the chip

DESIGN NOTE:  
Frequency = 577KHz  
DTH= ON

REV1.7  
-> R196- Changed to RES0291

		Digital Technology Int 31 Affleck rd Perth Airport WA 6105 Western Australia		(c) Copyright 2023	
Drawn:	CSB/PS/PR	Title 13V PSU			
Checked:	PS/PR	PCB No: PCB0290.4			Size:
Approved:	Chris Bailye	Drawing No: SCH0290		Drawing Revision: 4.1	A3
Date Released:	14/09/2023	File: 13V PSU.SchDoc			Sheet 4 of 27