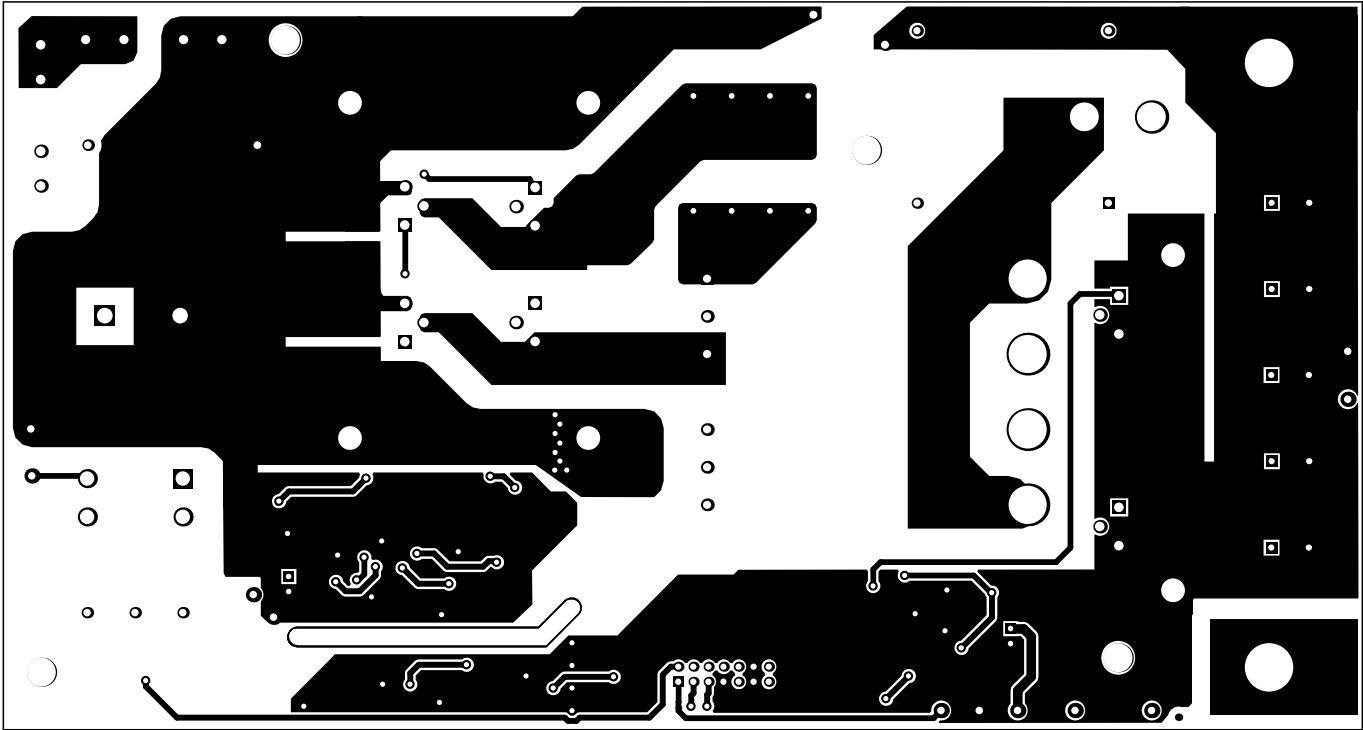
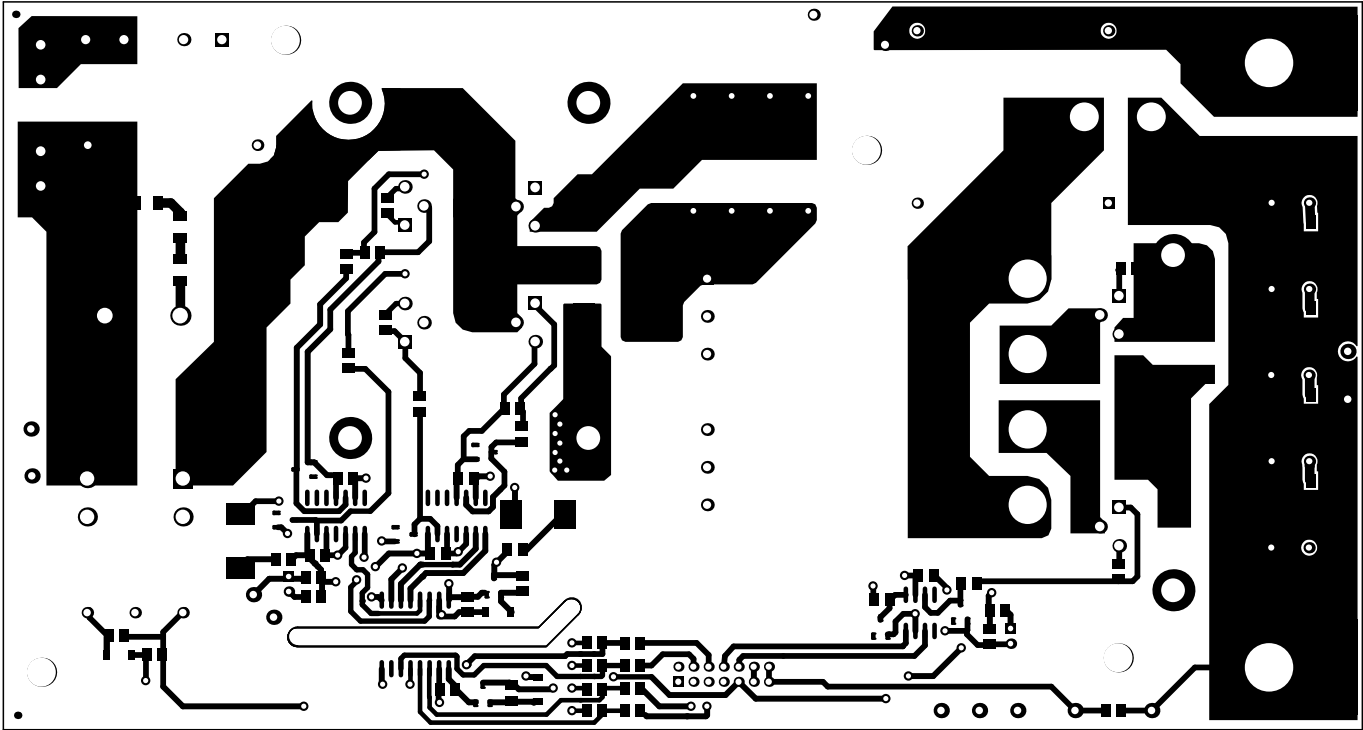


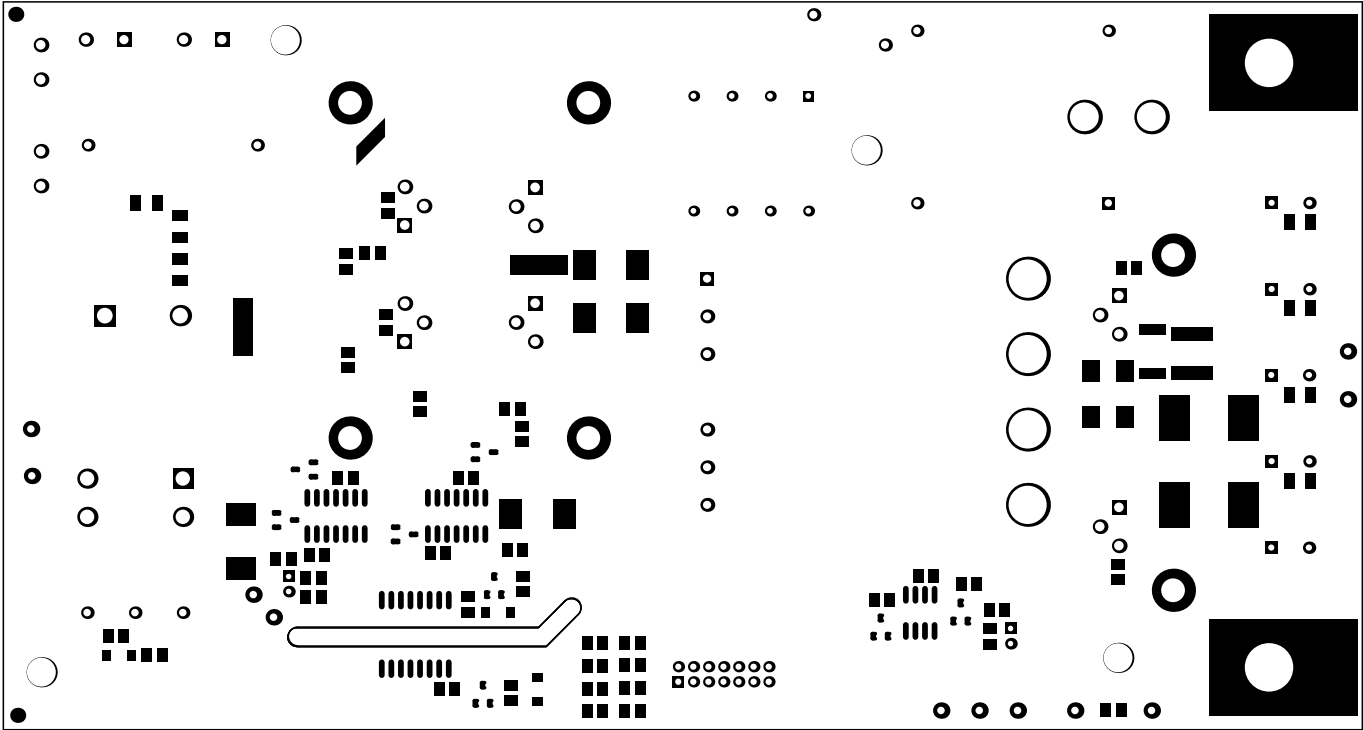
ALL ARTWORK VIEWED FROM TOP SIDE	BOARD #: PWR551	REV: A	SUN REV: 1108
LAYER NAME = Top Solder			
PLOT NAME = Top Solder Mask	GENERATED : 10/9/2014 3:50:38 PM	TEXAS INSTRUMENTS	



ALL ARTWORK VIEWED FROM TOP SIDE	BOARD #: PWR551	REV: A	SUN REV: 1108
LAYER NAME = Top Layer			
PLOT NAME = Top Layer	GENERATED : 10/9/2014 3:50:42 PM	TEXAS INSTRUMENTS	

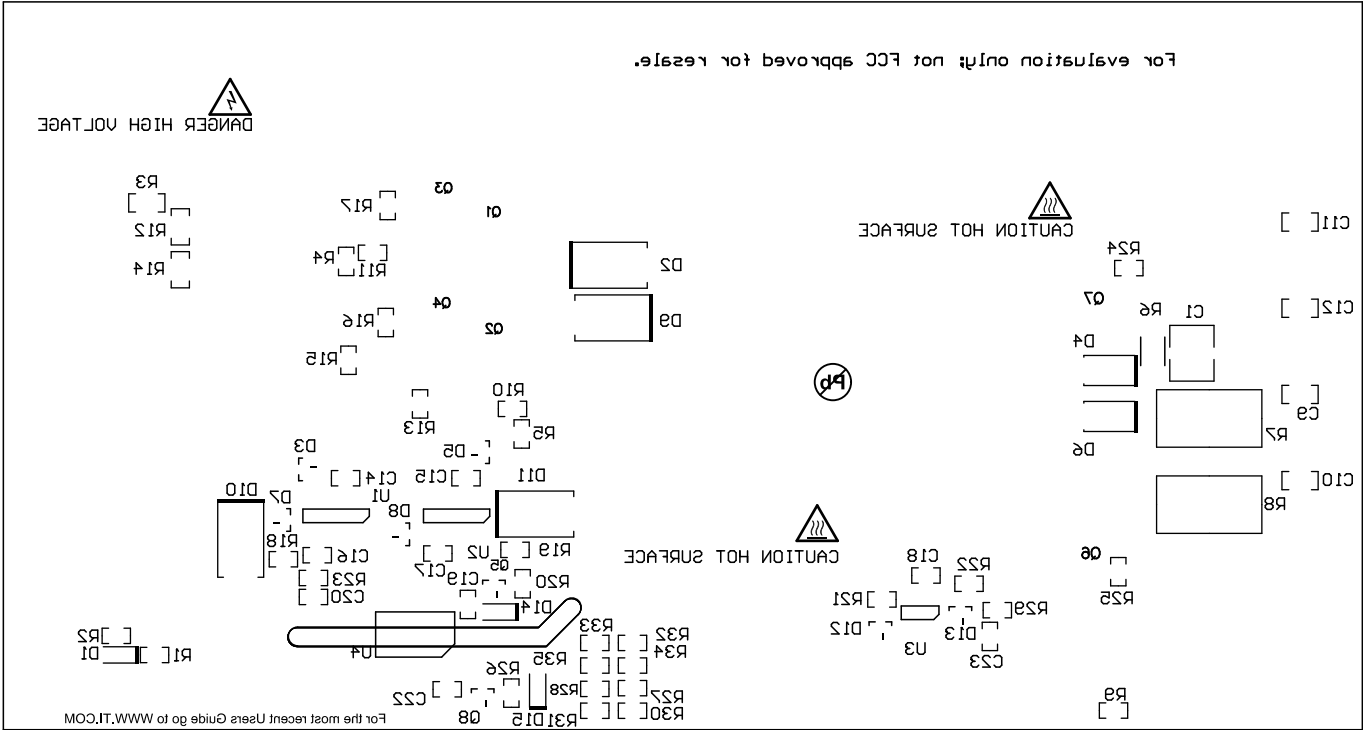


ALL ARTWORK VIEWED FROM TOP SIDE	BOARD #: PWR551	REV: A	SUN REV: 1108
LAYER NAME = Bottom Layer			
PLOT NAME = Bottom Layer	GENERATED : 10/9/2014 3:50:48 PM	TEXAS INSTRUMENTS	



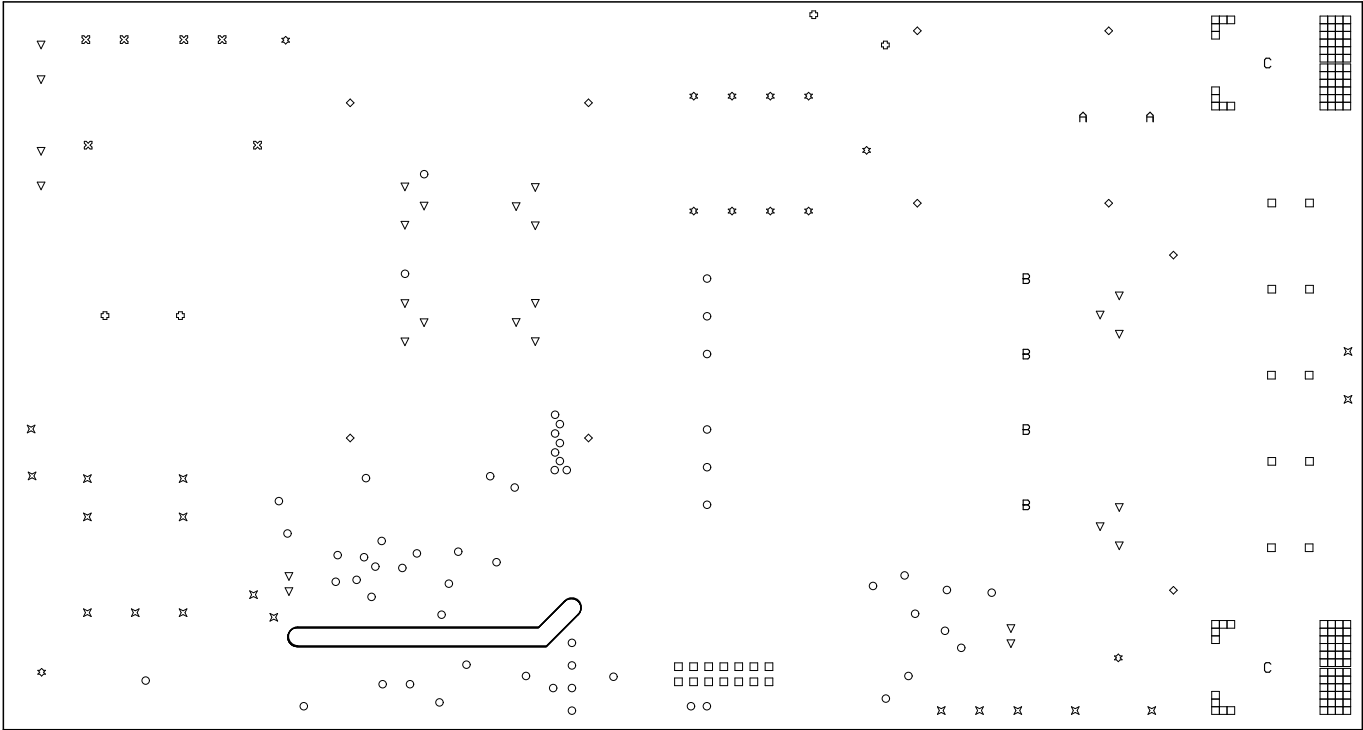
ALL ARTWORK VIEWED FROM TOP SIDE	BOARD #: PWR551	REV: A	SUN REV: 1108
LAYER NAME = Bottom Solder			
PLOT NAME = Bottom Solder Mask	GENERATED : 10/9/2014 3:50:53 PM	TEXAS INSTRUMENTS	

ALL ARTWORK VIEWED FROM TOP SIDE	BOARD #: PWR551	REV: A	SUN REV: 1108
LAYER NAME = Bottom Overlay			
PLOT NAME = Bottom Overlay	GENERATED : 10/9/2014 3:51:00 PM	TEXAS INSTRUMENTS	

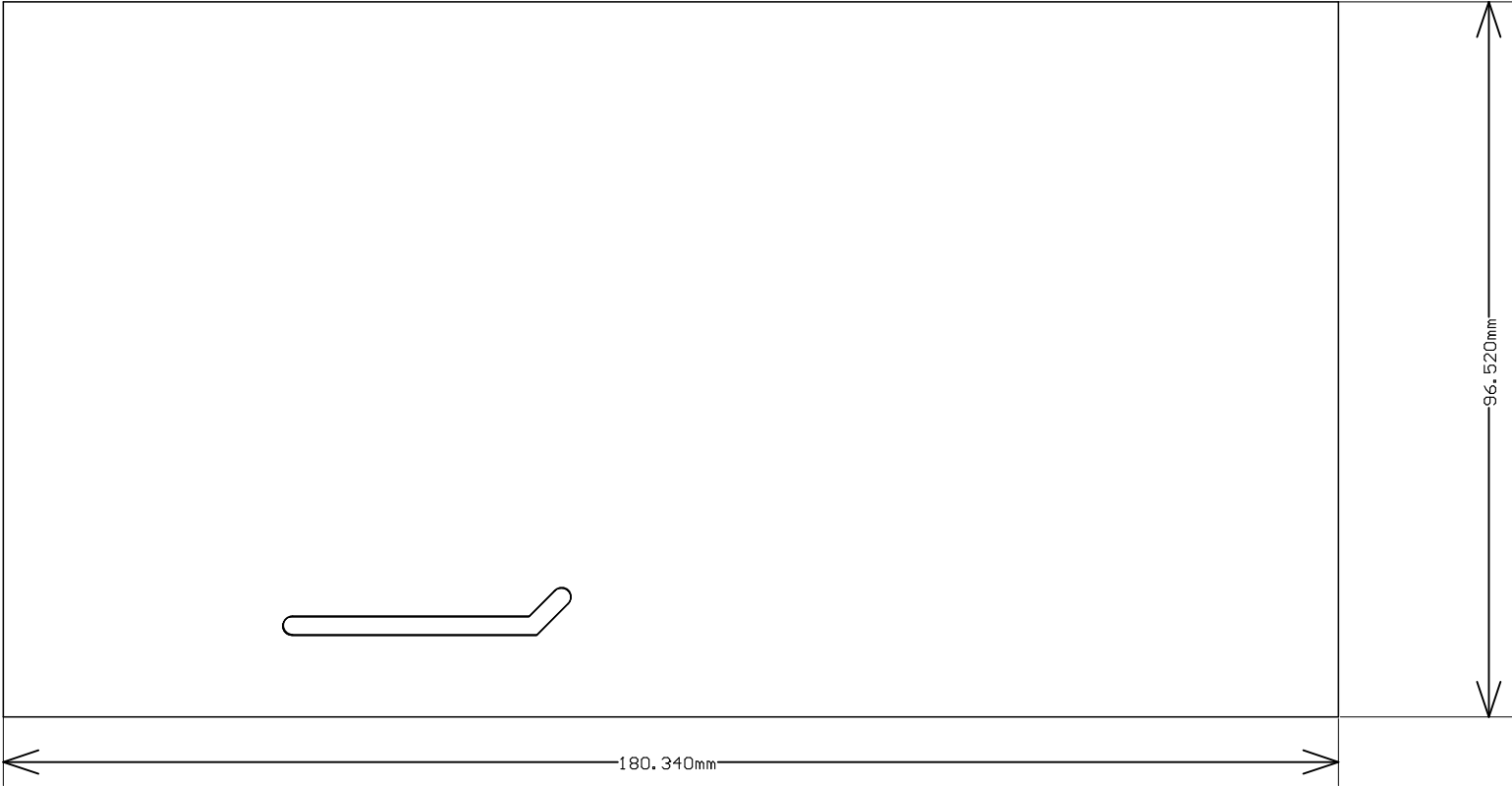


Symbol	Hit Count	Tool Size	Plated	Hole Type
□	116	16mil (0.406mm)	PTH	Round
○	52	28mil (0.711mm)	PTH	Round
▽	4	29.528mil (0.75mm)	PTH	Round
✱	8	31.496mil (0.8mm)	PTH	Round
□	24	33.465mil (0.85mm)	PTH	Round
◇	4	39.37mil (1mm)	PTH	Round
⌘	14	40mil (1.016mm)	PTH	Round
⊠	2	41.339mil (1.05mm)	PTH	Round
⊙	2	43mil (1.092mm)	PTH	Round
○	6	43.307mil (1.1mm)	PTH	Round
⊠	4	49.213mil (1.25mm)	PTH	Round
▽	22	51.181mil (1.3mm)	PTH	Round
⌘	4	76mil (1.93mm)	PTH	Round
⊙	2	82.677mil (2.1mm)	PTH	Round
◇	6	125mil (3.175mm)	PTH	Round
A	2	151.575mil (3.85mm)	PTH	Round
✱	4	152mil (3.861mm)	NPTH	Round
B	4	200.787mil (5.1mm)	PTH	Round
C	2	254mil (6.452mm)	PTH	Round
	282 Total			

Drill Table



ALL ARTWORK VIEWED FROM TOP SIDE	BOARD #: PWR551	REV: A	SUN REV: 1108
LAYER NAME = Drill Drawing			
PLOT NAME = Drill Drawing	GENERATED : 10/9/2014 3:51:06 PM	TEXAS INSTRUMENTS	



ALL ARTWORK VIEWED FROM TOP SIDE	BOARD #: PWR551	REV: A	SUN REV: 1108
LAYER NAME = M2 Board Dimensions			
PLOT NAME = Board Dimensions	GENERATED : 10/9/2014 3:52:59 PM	TEXAS INSTRUMENTS	