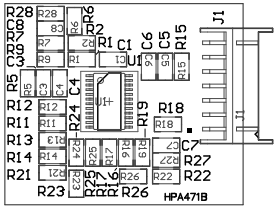


ZZ1 ■ These assemblies are ESD sensitive, ESD precautions shall be observed.
 ZZ2 ■ These assemblies must be clean and free from flux and all contaminants. Use of no clean flux is not acceptable.
 ZZ3 ■ These assemblies must comply with workmanship standards IPC-A-610 Class 2, unless otherwise specified.

COMPONENTS MARKED 'DNP' SHOULD NOT BE POPULATED.
 ASSEMBLY VARIANT: 001



PCB VIEWED FROM TOP SIDE	BOARD #: HPA471	REV: B	SUN REV: 1106
IGNORE ->			
PLOT NAME = Top Assembly Drawing	GENERATED : 10/8/2014 6:12:33 PM	TEXAS INSTRUMENTS	

