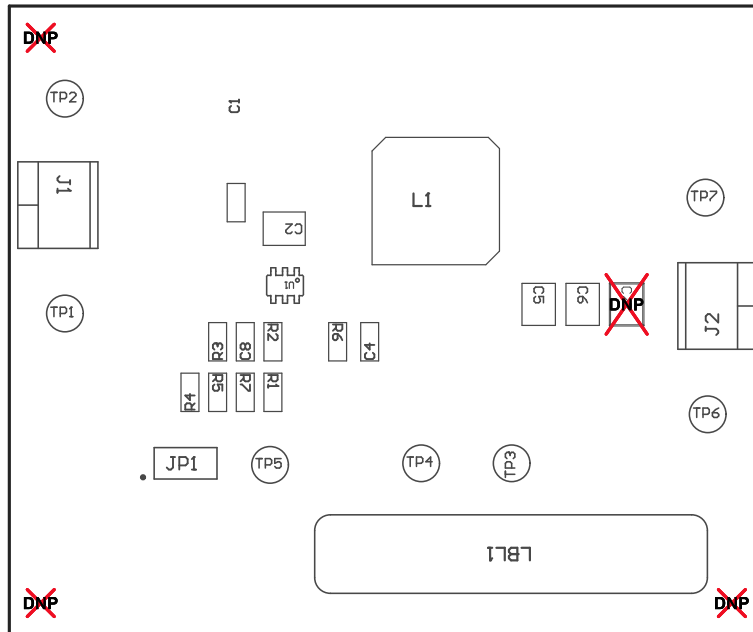
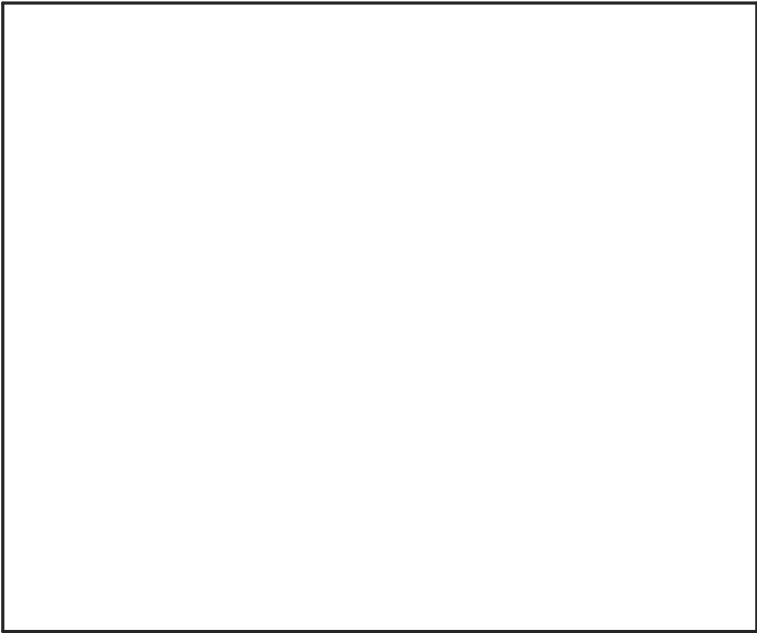


ZZ4 ■ These assemblies must comply with workmanship standards IPC-A-610 Class 2, unless otherwise specified.



PCB VIEWED FROM TOP SIDE	BOARD #: PWR716	REV: A	SUN REV: Not In VersionControl
IGNORE ->			
PLOT NAME = Top Assembly Drawing	GENERATED : 4/11/2016 10:22:32 AM		TEXAS INSTRUMENTS



COMPONENTS MARKED 'DNP' SHOULD NOT BE POPULATED.
ASSEMBLY VARIANT: 001

PCB VIEWED FROM BOTTOM SIDE	BOARD #: PWR716	REV: A	SUN REV: Not In VersionControl
	IGNORE ->		
PLOT NAME = Bottom Assembly Drawing	GENERATED : 4/11/2016 10:22:33 AM	TEXAS INSTRUMENTS	