

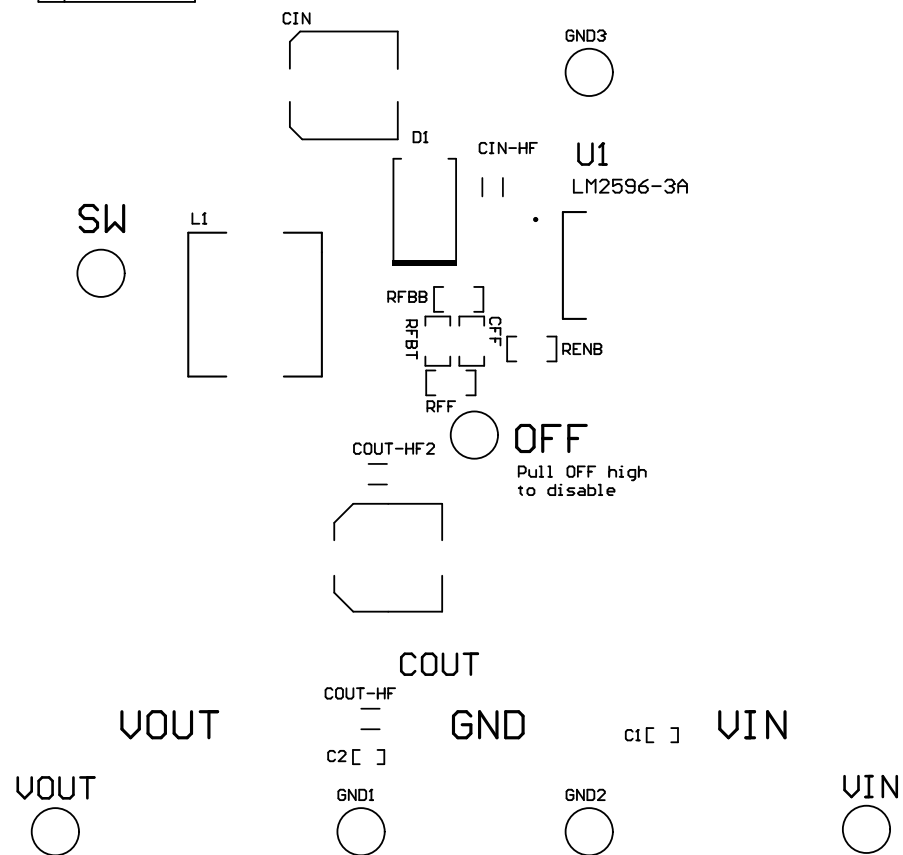
# SIMPLE SWITCHER®

LM2596S-ADJ EVM

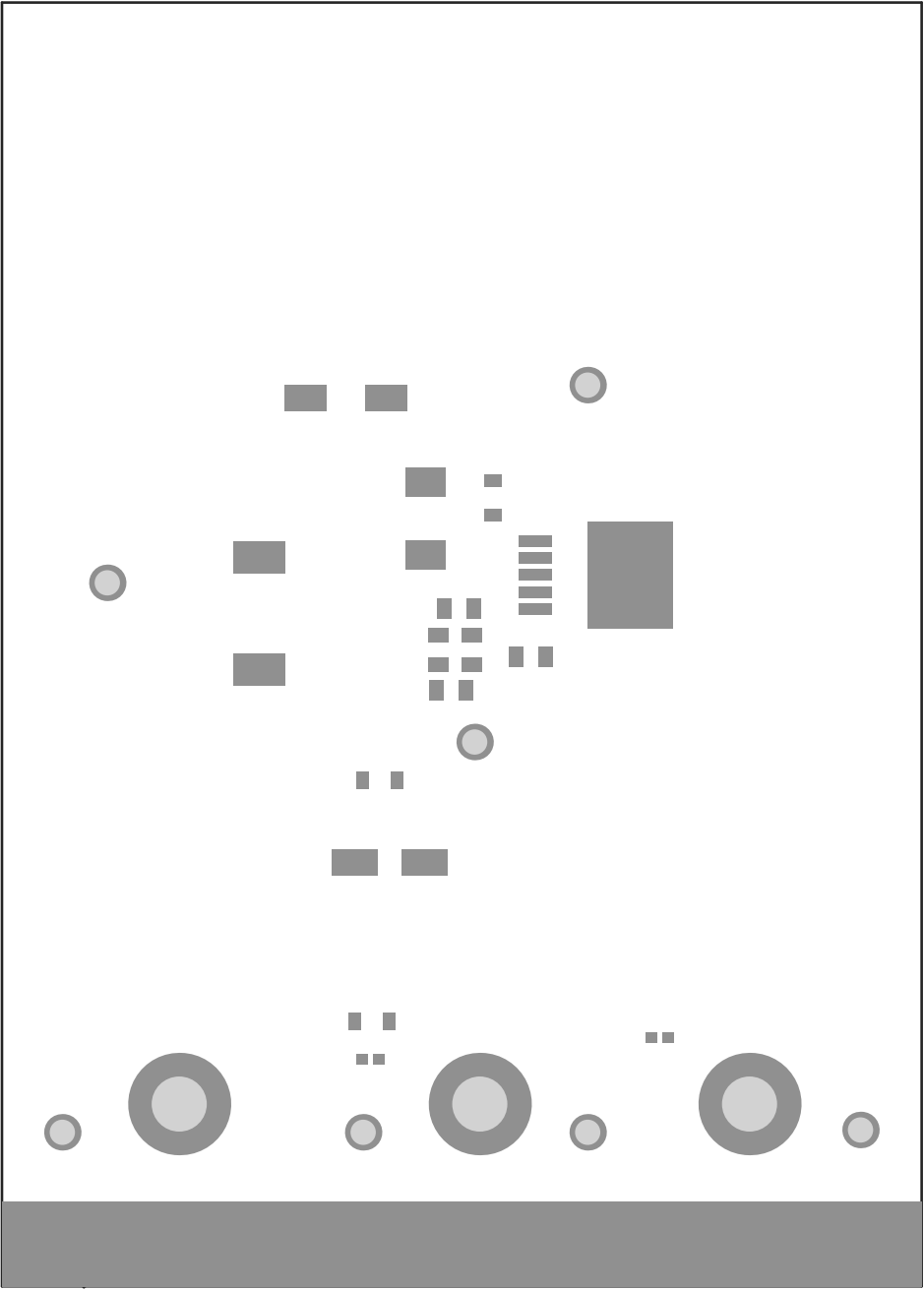


LM2596 PINOUT

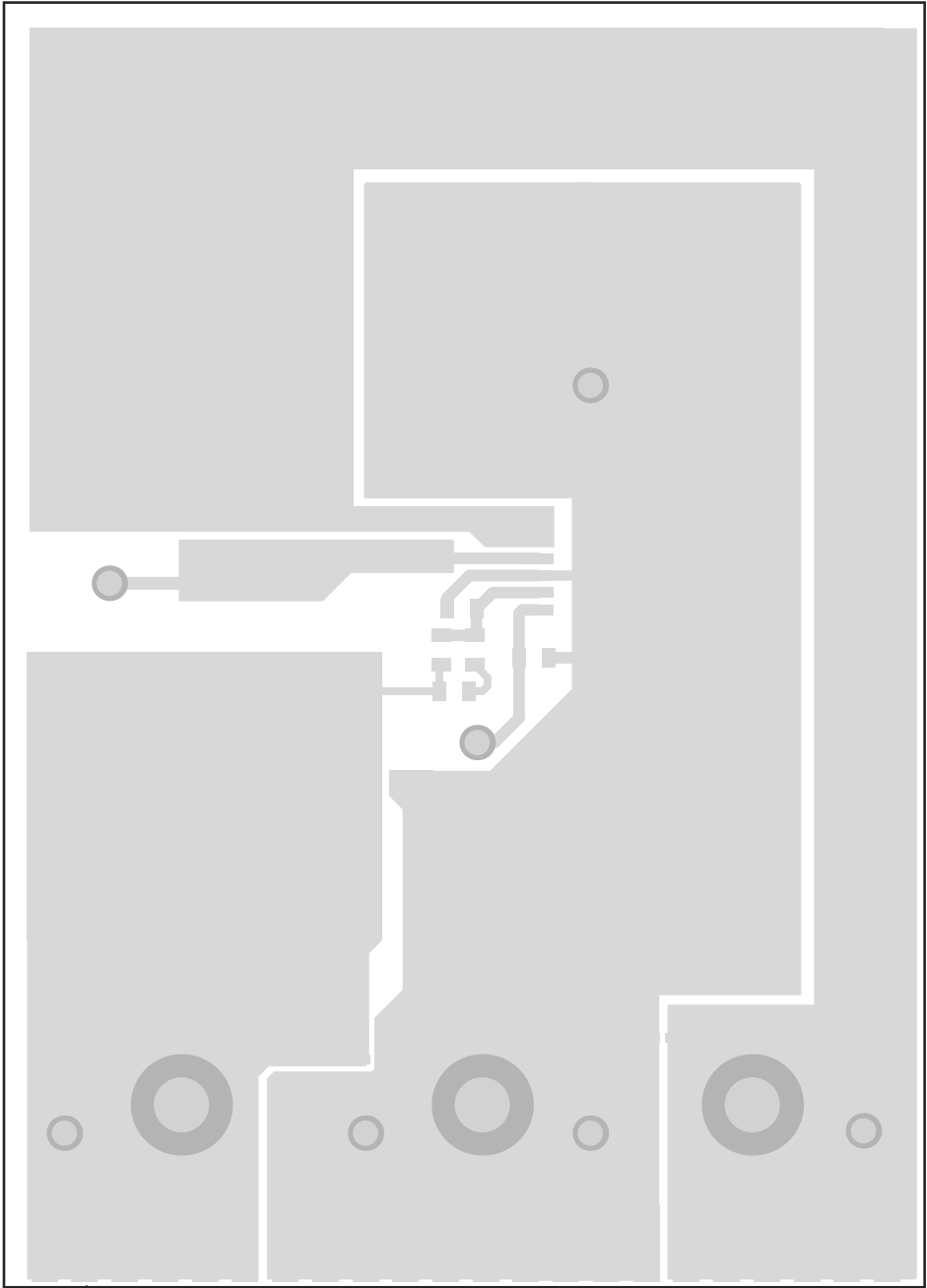
1	VIN
2	OUT
3	GROUND
4	FEEDBACK
5	ON/OFF



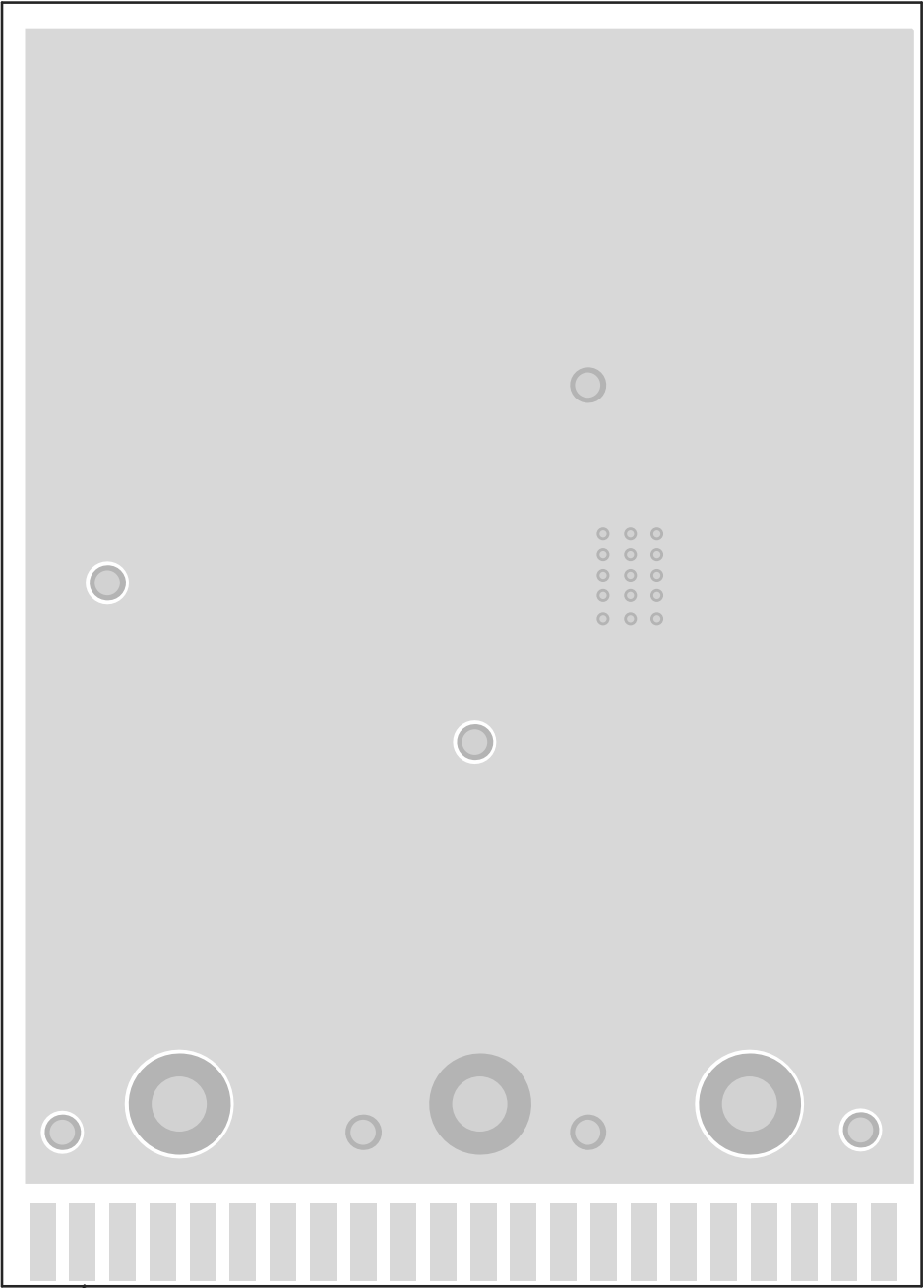
ALL ARTWORK VIEWED FROM TOP SIDE	BOARD #: SU601299	REV: A	SUN REV: Not In VersionControl
LAYER NAME = Top Overlay	TID #:		
PLOT NAME = Top Overlay	GENERATED : 6/24/2016 5:13:34 PM	TEXAS INSTRUMENTS	



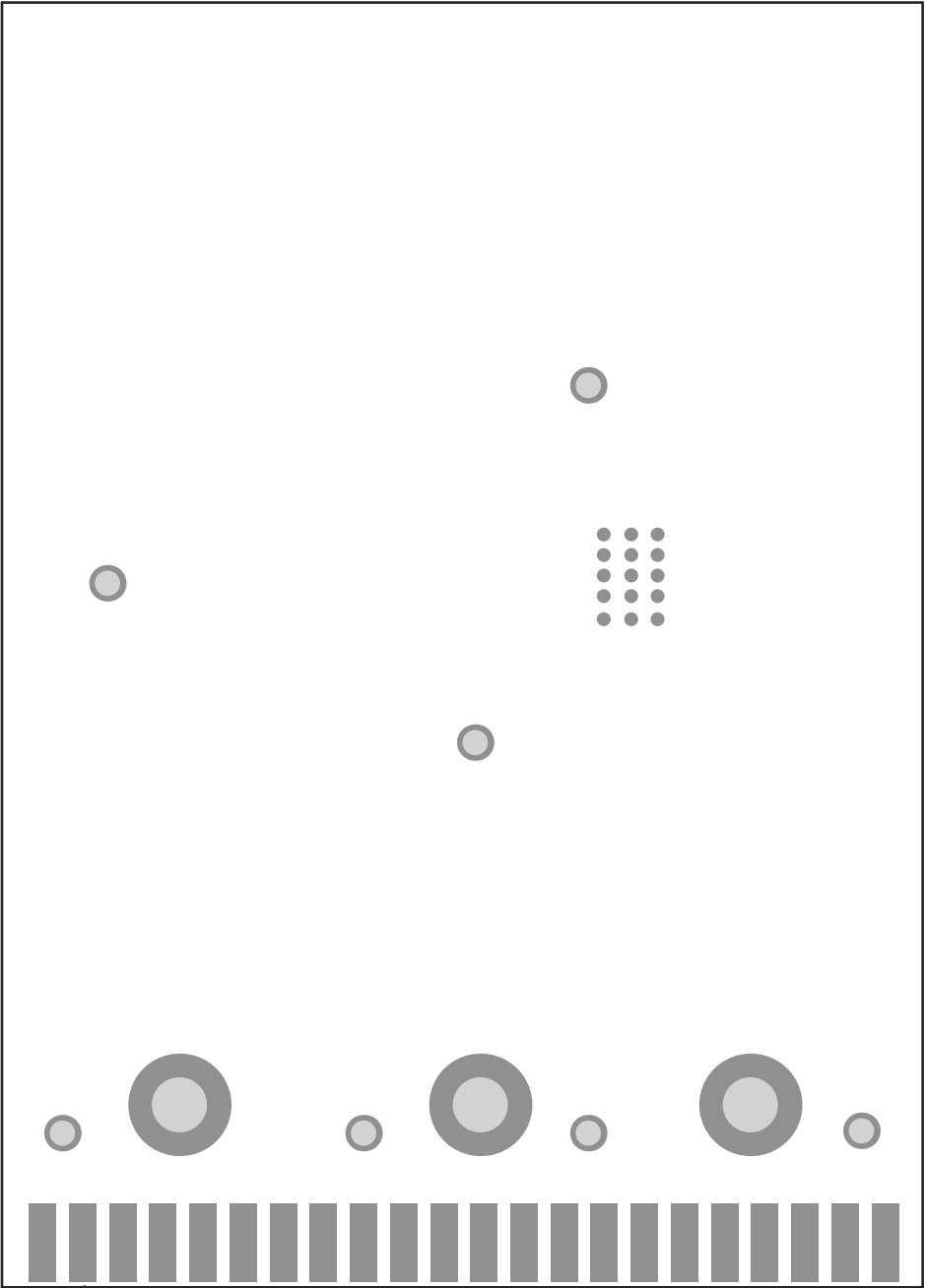
ALL ARTWORK VIEWED FROM TOP SIDE	BOARD #: SU601299	REV: A	SUN REV: Not In VersionControl
LAYER NAME = Top Solder	TID #:		
PLOT NAME = Top Solder Mask	GENERATED : 6/24/2016 5:13:35 PM		TEXAS INSTRUMENTS



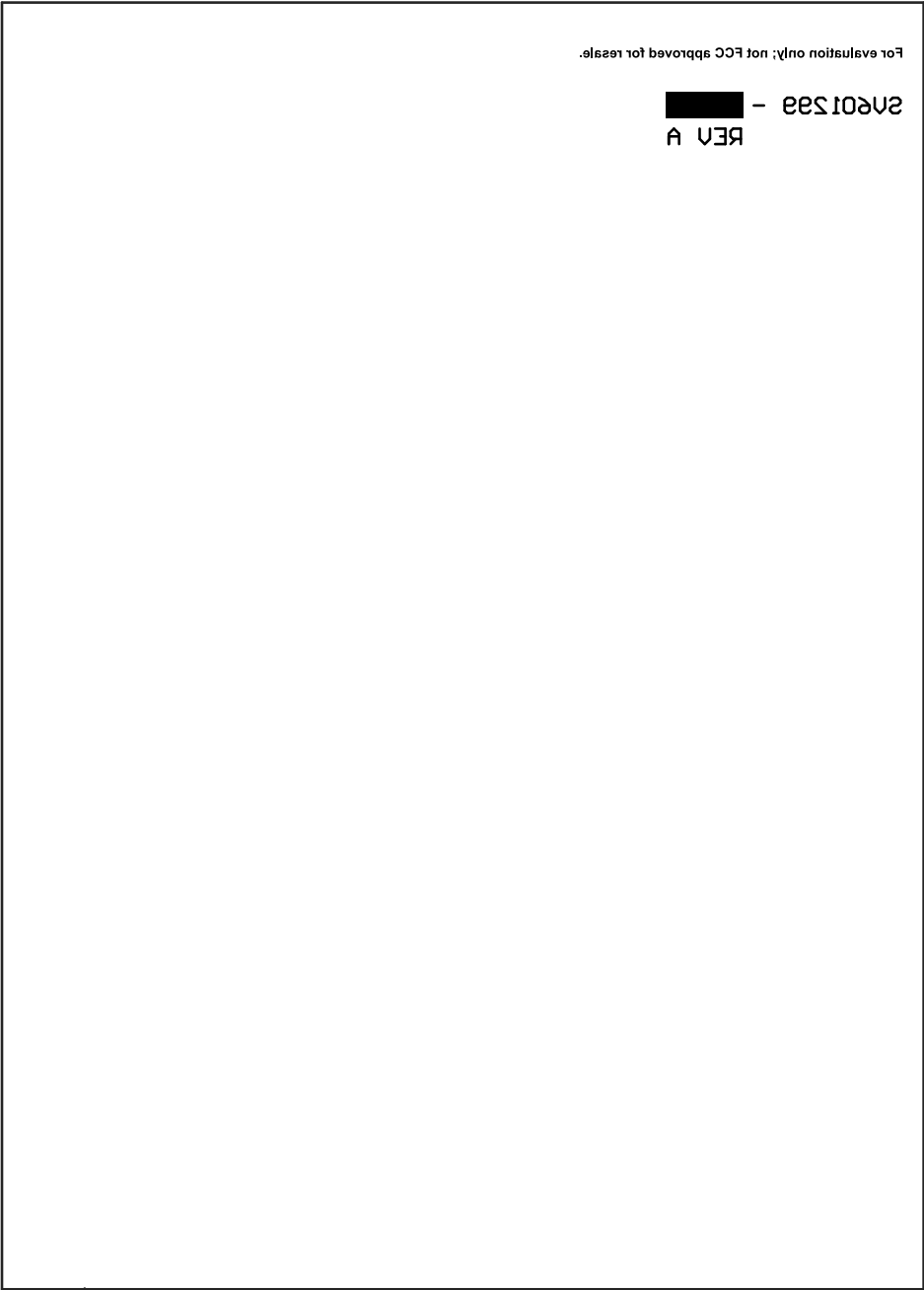
ALL ARTWORK VIEWED FROM TOP SIDE	BOARD #: SU601299	REV: A	SUN REV: Not In VersionControl
LAYER NAME = Top Layer	TID #:		
PLOT NAME = Top Layer	GENERATED : 6/24/2016 5:13:36 PM	TEXAS INSTRUMENTS	



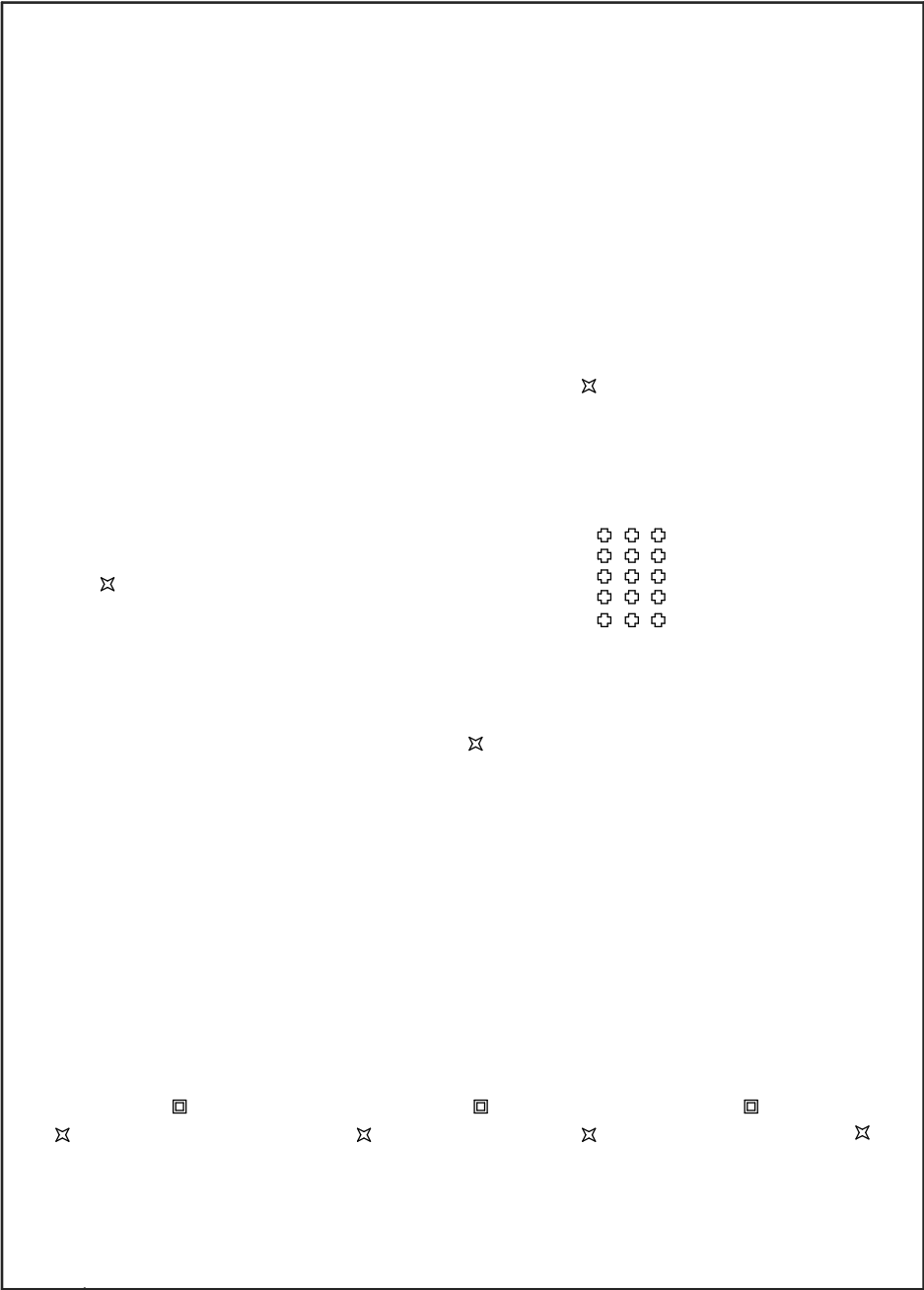
ALL ARTWORK VIEWED FROM TOP SIDE	BOARD #: SU601299	REV: A	SUN REV: Not In VersionControl
LAYER NAME = Bottom Layer	TID #:		
PLOT NAME = Bottom Layer	GENERATED : 6/24/2016 5:13:36 PM		TEXAS INSTRUMENTS



ALL ARTWORK VIEWED FROM TOP SIDE	BOARD #: SU601299	REV: A	SUN REV: Not In VersionControl
LAYER NAME = Bottom Solder	TID #:		
PLOT NAME = Bottom Solder Mask	GENERATED : 6/24/2016 5:13:37 PM		TEXAS INSTRUMENTS

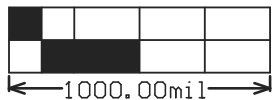
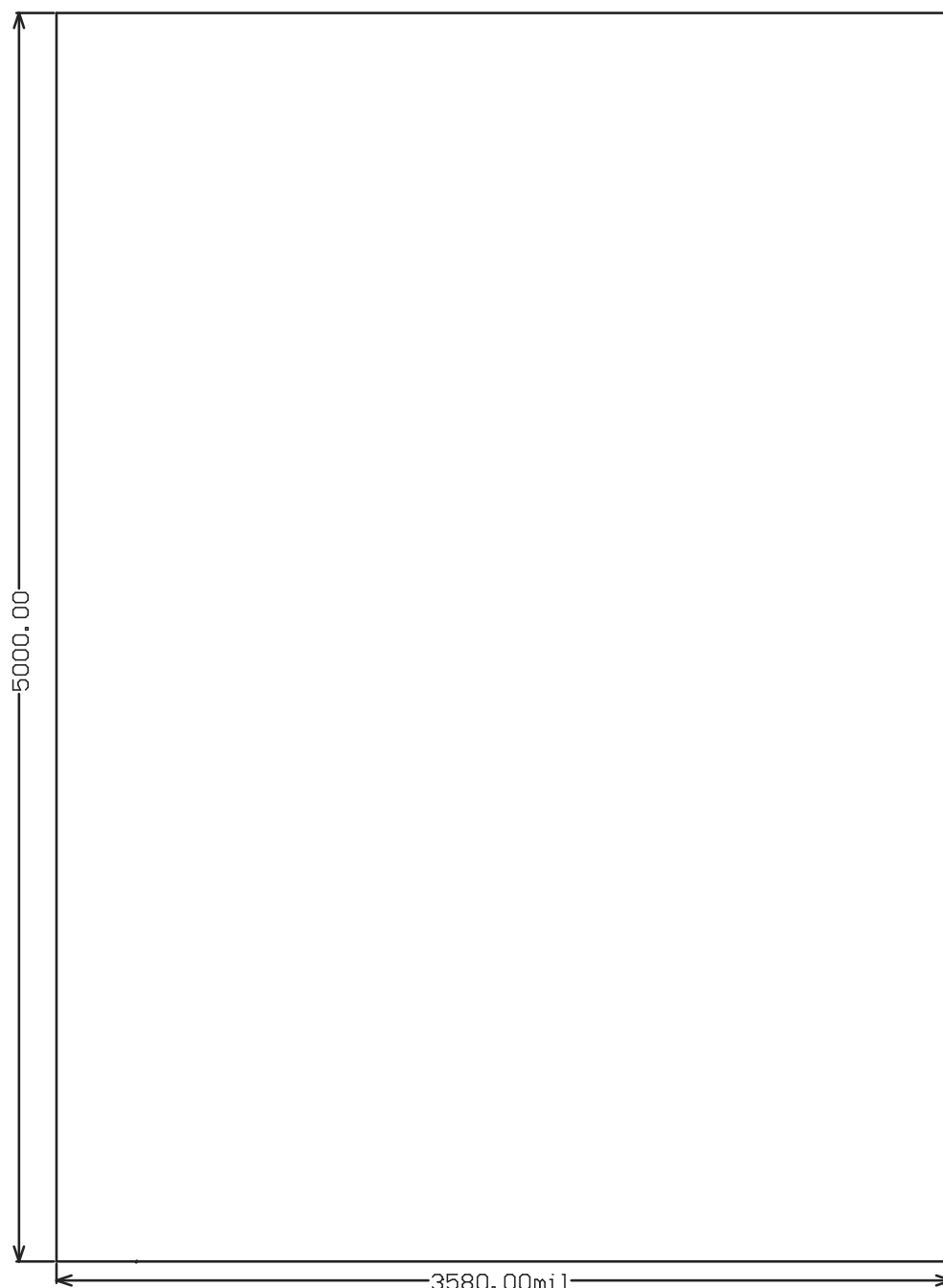


ALL ARTWORK VIEWED FROM TOP SIDE	BOARD #: SU601299	REV: A	SUN REV: Not In VersionControl
LAYER NAME = Bottom Overlay	TID #:		
PLOT NAME = Bottom Overlay	GENERATED : 6/24/2016	5:13:38 PM	TEXAS INSTRUMENTS



Symbol	Quantity	Finished Hole Size	Plated	Hole Type
⊗	15	28.00mil (0.711mm)	PTH	Round
✕	7	98.43mil (2.500mm)	PTH	Round
■	3	214.57mil (5.450mm)	PTH	Round
	25 Total			

ALL ARTWORK VIEWED FROM TOP SIDE	BOARD #: SU601299	REV: A	SUN REV: Not In VersionControl
LAYER NAME = Drill Drawing	TID #:		
PLOT NAME = Drill Drawing	GENERATED : 6/24/2016 5:13:38 PM		TEXAS INSTRUMENTS



1000.00mil

ALL ARTWORK VIEWED FROM TOP SIDE	BOARD #: SU601299	REV: A	SUN REV: Not In VersionControl
LAYER NAME = M2 Board Dimensions	TID #:		
PLOT NAME = Board Dimensions	GENERATED : 6/24/2016 5:13:39 PM		TEXAS INSTRUMENTS