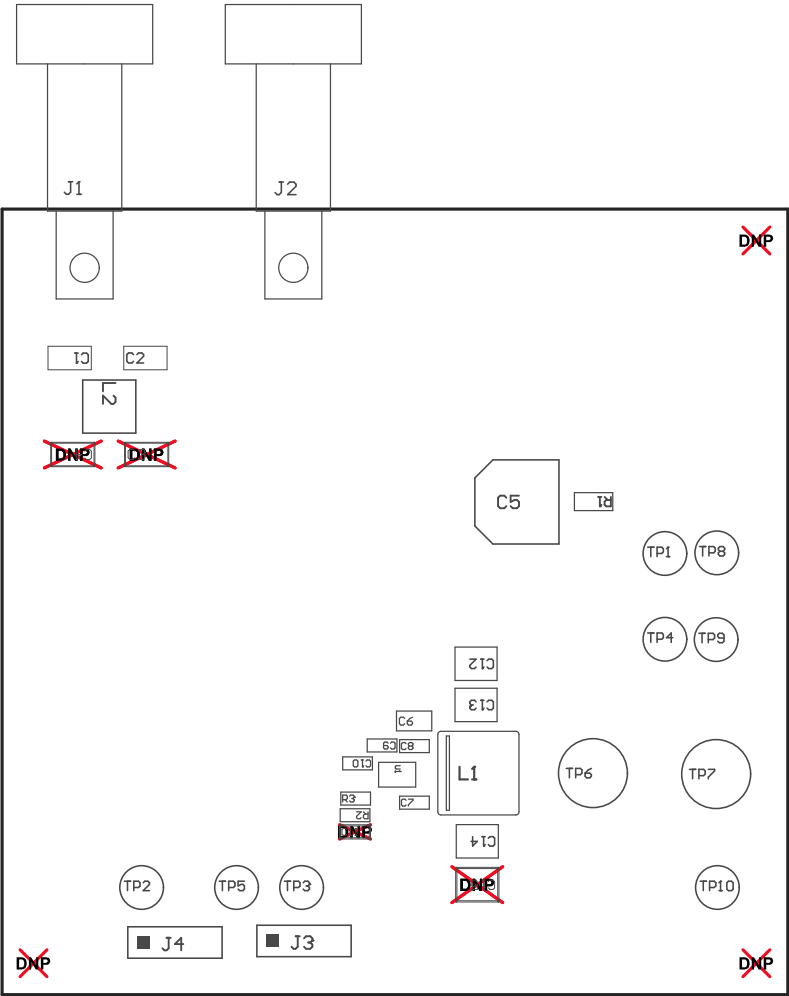
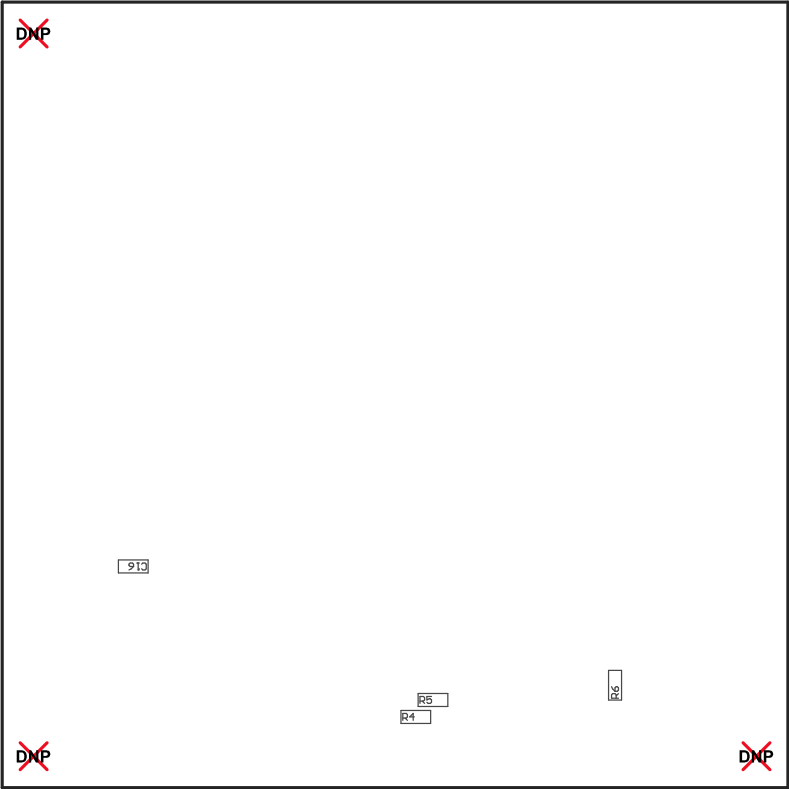


- Z22 ■ These assemblies are ESD sensitive, ESD precautions shall be observed.
- Z23 ■ These assemblies must be clean and free from flux and all contaminants. Use of no clean flux is not acceptable.
- Z24 ■ These assemblies must comply with workmanship standards IPC-A-610 Class 2, unless otherwise specified.
- Z26 ■ Place shunt jumper <SH-J2> on jumper <J4> in position 2-3
- Z25 ■ Place shunt jumper <SH-J1> on jumper <J3> in position 2-3



COMPONENTS MARKED 'DNP' SHOULD NOT BE POPULATED.  
ASSEMBLY VARIANT: 001

PCB VIEWED FROM TOP SIDE	BOARD #: BSR107		
	TID #: N/A		
PLOT NAME = Top Assembly Drawing	GENERATED : 11/13/2019 2:15:41 PM	TEXAS INSTRUMENTS	



COMPONENTS MARKED 'DNP' SHOULD NOT BE POPULATED.

	BOARD #: BSR107	REV: A	SUN REV: Not In VersionControl
	TID #: N/A		
PLOT NAME = Bottom Assembly Drawing	GENERATED : 11/13/2019 2:15:44 PM		TEXAS INSTRUMENTS