

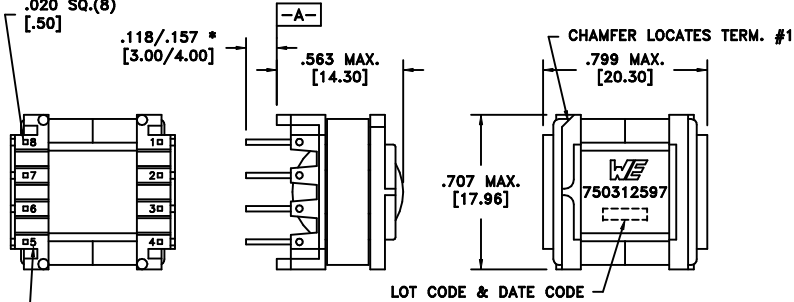
CUSTOMER TERMINAL	RoHS	LEAD(Pb)-FREE
Sn96%, Ag4%	Yes	Yes

more than you expect

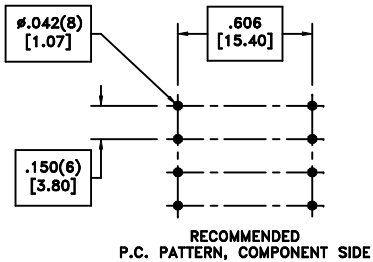
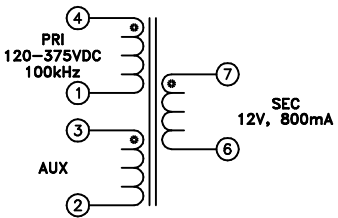


PART MUST INSERT FULLY TO SURFACE A IN RECOMMENDED GRID  
.020 SQ.(8)  
[.50]

\* DIMENSION MAY BE EXCEEDED WITH SOLDER ONLY



TERM. NO.'s FOR REF. ONLY



**ELECTRICAL SPECIFICATIONS @ 25°C unless otherwise noted:**

PARAMETER	TEST CONDITIONS	VALUE
D.C. RESISTANCE	1-4 @20°C	2.78 ohms ±10%
D.C. RESISTANCE	2-3 @20°C	0.387 ohms ±10%
D.C. RESISTANCE	6-7 @20°C	0.040 ohms max.
INDUCTANCE	1-4 10kHz, 100mVAC, Ls	1.85mH ±5%
SATURATION CURRENT	20% rolloff from initial	325mA
LEAKAGE INDUCTANCE	1-4 tie(2+3, 6+7), 100kHz, 100mVAC, Ls	22.0uH typ., 45.0uH max.
DIELECTRIC	1-7 tie(3+4), 3750VAC, 1 second	3000VAC, 1 minute
DIELECTRIC	1-2 625VAC, 1 second	500VAC, 1 minute
TURNS RATIO	(4-1):(3-2)	10:1, ±1%
TURNS RATIO	(4-1):(7-6)	10:1, ±1%

**GENERAL SPECIFICATIONS:**

OPERATING TEMPERATURE RANGE: -40°C to +125°C including temp rise.

Safety Standard Undefined.

Wire insulation & RoHS status not affected by wire color.  
Wire insulation color may vary depending on availability.

REV.	DATE	Packaging Specifications Method: Tray PKG-0690 www.we-online.com/midcom		Tolerances unless otherwise specified: Angles: ±1°      Decimals: ±.005 [.13] Fractions: ±1/64      Footprint: ±.001 [.03]	DRAWING TITLE TRANSFORMER	PART NO. 750312597
6A	10/11	SEE REVISION SHEET FOR REVISION LEVEL	CONVENTION PLACEMENT	This drawing is dual dimensioned. Dimensions in brackets are in millimeters.	eiSos p/n: 750312597	compliant RoHS SPECIFICATION SHEET 1 OF 1