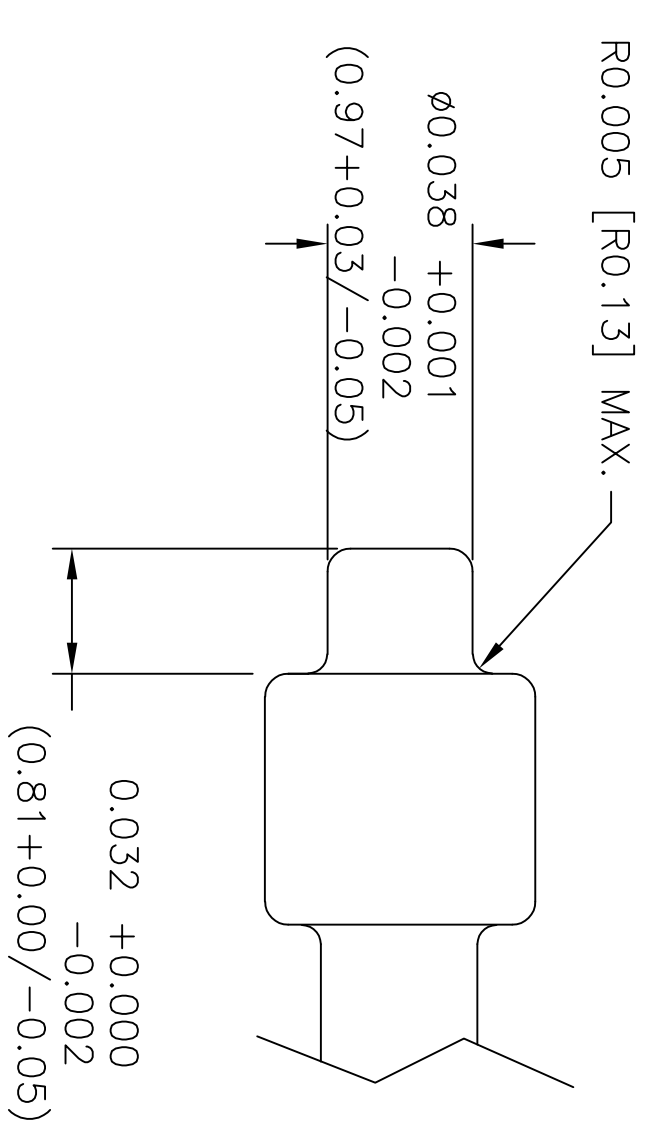
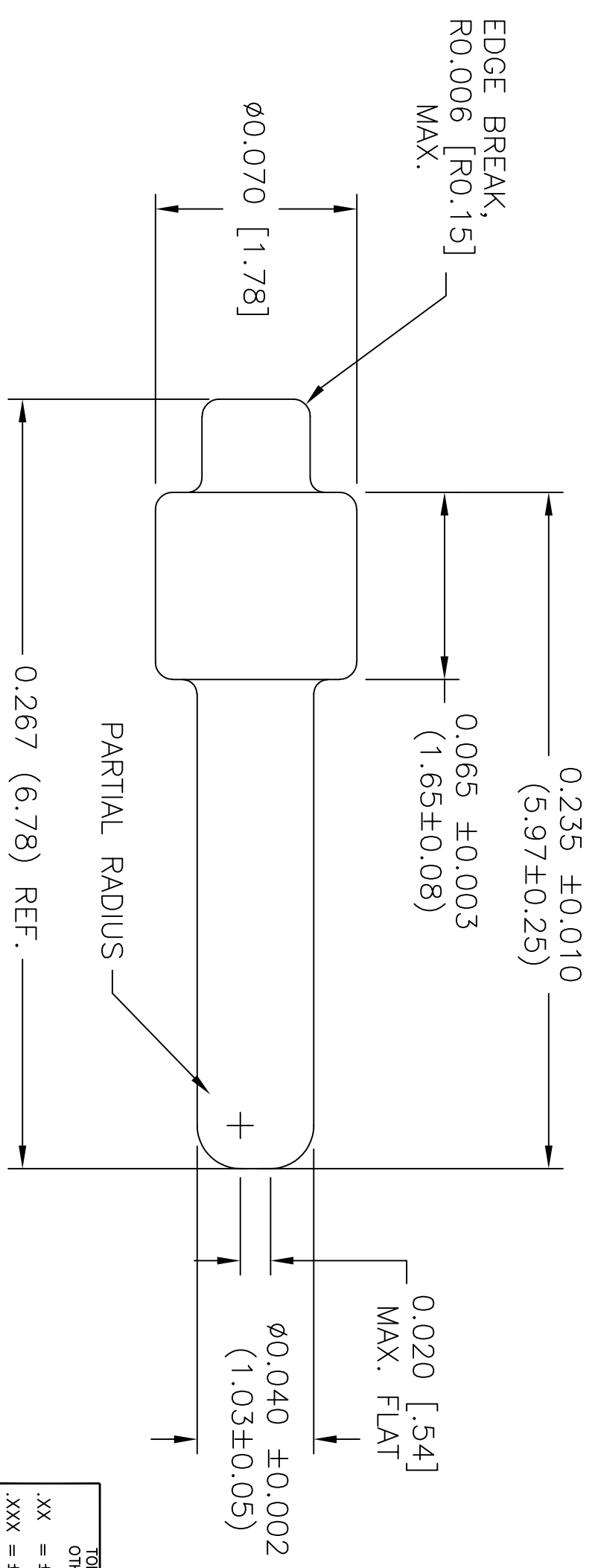


REVISION BLOCK		DATE
REV	DESCRIPTION	DATE
1E	P/N 077-00076 WAS 077-00120, CHANGED PIN FROM TAPE & REEL TO BULK.	11/4/15
1F	CHANGED EDGE BREAK FROM R0.005 TO R0.006 MAX.	8/10/17



- NOTES:
- 1) INTERPRET THIS DRAWING IN ACCORDANCE WITH ASME Y14.5-1994.
 - 2) PARTS TO BE PACKAGED LOOSE IN A BAG. QUANTITY OF PARTS PER BAG SHALL BE 25K. FOREIGN MATTERS MUST BE KEPT OUT OF THE BAG.
 - 3) MATERIAL: PIN; 1/2 HARD COPPER ALLOY C11000 OR EQUIVALENT.
 - 4) FINISH: PIN; 100-200 MICRO INCHES OF NICHEL PLATING. 300-500 MICRO INCHES OF MATTE TIN PLATE (LEAD FREE).
 - 5) ALL SHIPMENTS MUST BE TESTED FOR SOLDERABILITY PER IPC/EIA/JEDEC J-STD-002, TEST A, CATEGORY 3,



TEXAS INSTRUMENTS
 27715 DIEHL ROAD
 WARRENVILLE, IL 60555
 (630) 393-6901

DESC: HYBRID PIN, .040 D, .170 L.

TOLERANCES UNLESS OTHERWISE SPECIFIED

.XX = ±0.005 HOLES = ±0.001
 .XXX = ±0.003 ANGLES = ± 1/2°

DRAWN	DATE
C. FERNANDEZ	9/3/14
CHKD	DATE
ISSUED	DATE

CONFIDENTIAL

This document and the information contained herein is confidential and proprietary to Texas Instruments, and may not be reproduced or used for any purpose without the expressed written permission of Texas Instruments.

DO NOT SCALE DRAWING	FILE NAME	SCALE	SHEET	OF
	77-00076.DWG		1	1

MATERIAL:	SEE NOTE 3.
FINISH:	SEE NOTE 4.
COLOR:	
E.C.O. No	
SIZE	DWG No
B	077-00076
REV	
1F	