

PLACE OUTSIDE MACRO
CH1

PLACE OUTSIDE MACRO
CH2

PLACED OUTSIDE MACRO

CH1

CH2

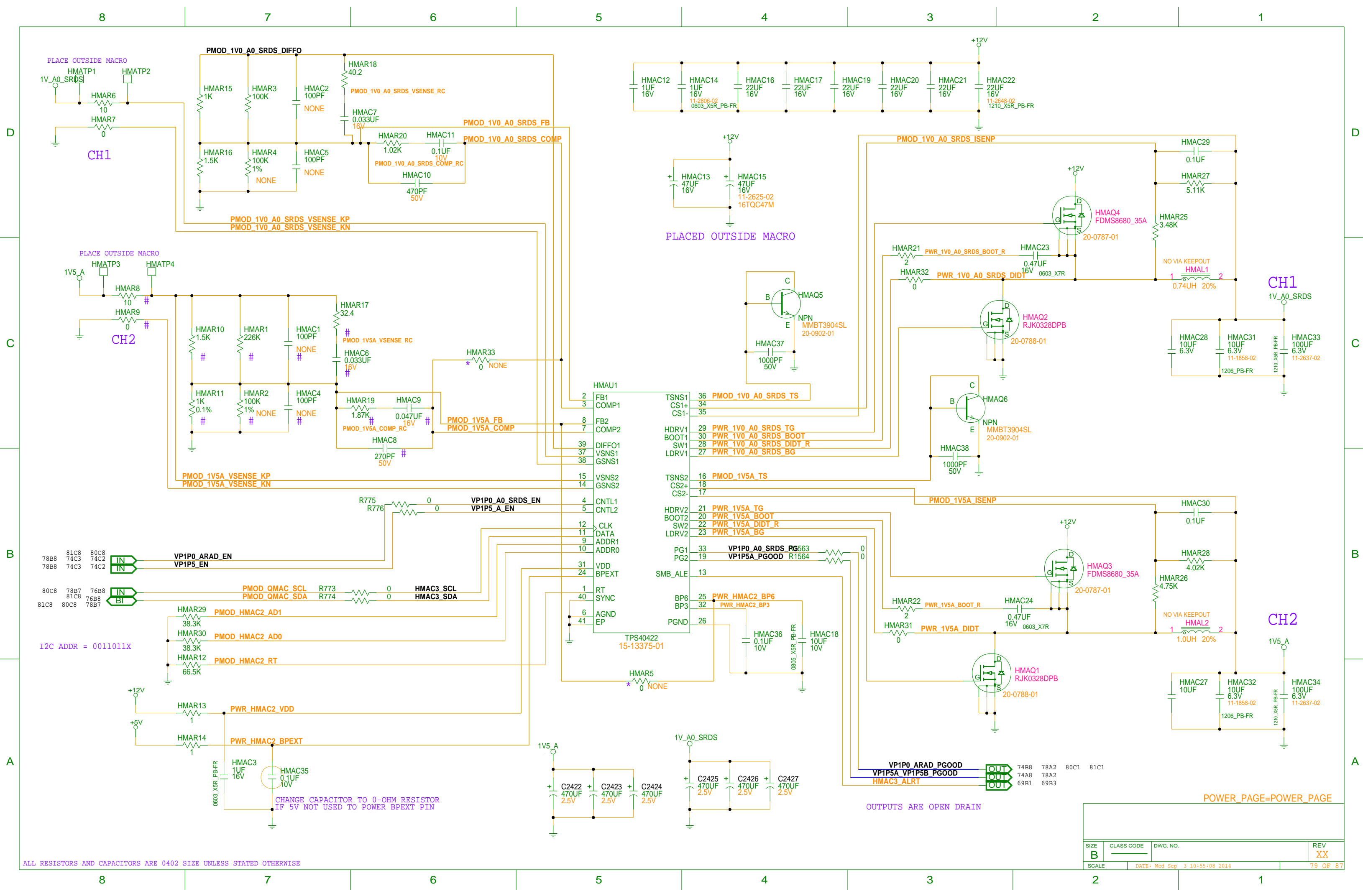
I2C ADDR = 0011101X

OUTPUTS ARE OPEN DRAIN

CHANGE CAPACITOR TO 0-OHM RESISTOR
IF 5V NOT USED TO POWER BPEXT PIN

ALL RESISTORS AND CAPACITORS ARE 0402 SIZE UNLESS STATED OTHERWISE

SIZE B	CLASS CODE	DWG. NO.	REV XX
SCALE	DATE: Wed Sep 3 10:54:51 2014		78 OF 87



PLACE OUTSIDE MACRO

PLACED OUTSIDE MACRO

CH1

CH1

CH2

CH2

I2C ADDR = 0011011X

OUTPUTS ARE OPEN DRAIN

POWER_PAGE=POWER_PAGE

- HMAU1
- 2 FB1
- 3 COMP1
- 8 FB2
- 7 COMP2
- 39 DIFFO1
- 37 VSNS1
- 38 GSNS1
- 15 VSNS2
- 14 GSNS2
- 4 CNTL1
- 5 CNTL2
- 12 CLK
- 11 DATA
- 9 ADDR1
- 10 ADDR0
- 31 VDD
- 24 BPEXT
- 1 RT
- 40 SYNC
- 6 AGND
- 41 EP

- TSNS1 36 PMOD_1V0_A0_SRDS_TS
- CS1+ 34
- CS1- 35
- HDRV1 29 PWR_1V0_A0_SRDS_TG
- BOOT1 30 PWR_1V0_A0_SRDS_BOOT
- SW1 28 PWR_1V0_A0_SRDS_DIDT_R
- LDRV1 27 PWR_1V0_A0_SRDS_BG
- TSNS2 16 PMOD_1V5A_TS
- CS2+ 18
- CS2- 17
- HDRV2 21 PWR_1V5A_TG
- BOOT2 20 PWR_1V5A_BOOT
- SW2 22 PWR_1V5A_DIDT_R
- LDRV2 23 PWR_1V5A_BG
- PG1 33 VP1P0_A0_SRDS_PG563
- PG2 19 VP1P5A_PGOOD R1564
- SMB_ALE 13
- BP6 25 PWR_HMAC2_BP6
- BP3 32 PWR_HMAC2_BP3
- PGND 26

74B8	78A2	80C1	81C1
74A8	78A2		
69B1	69B3		