

A

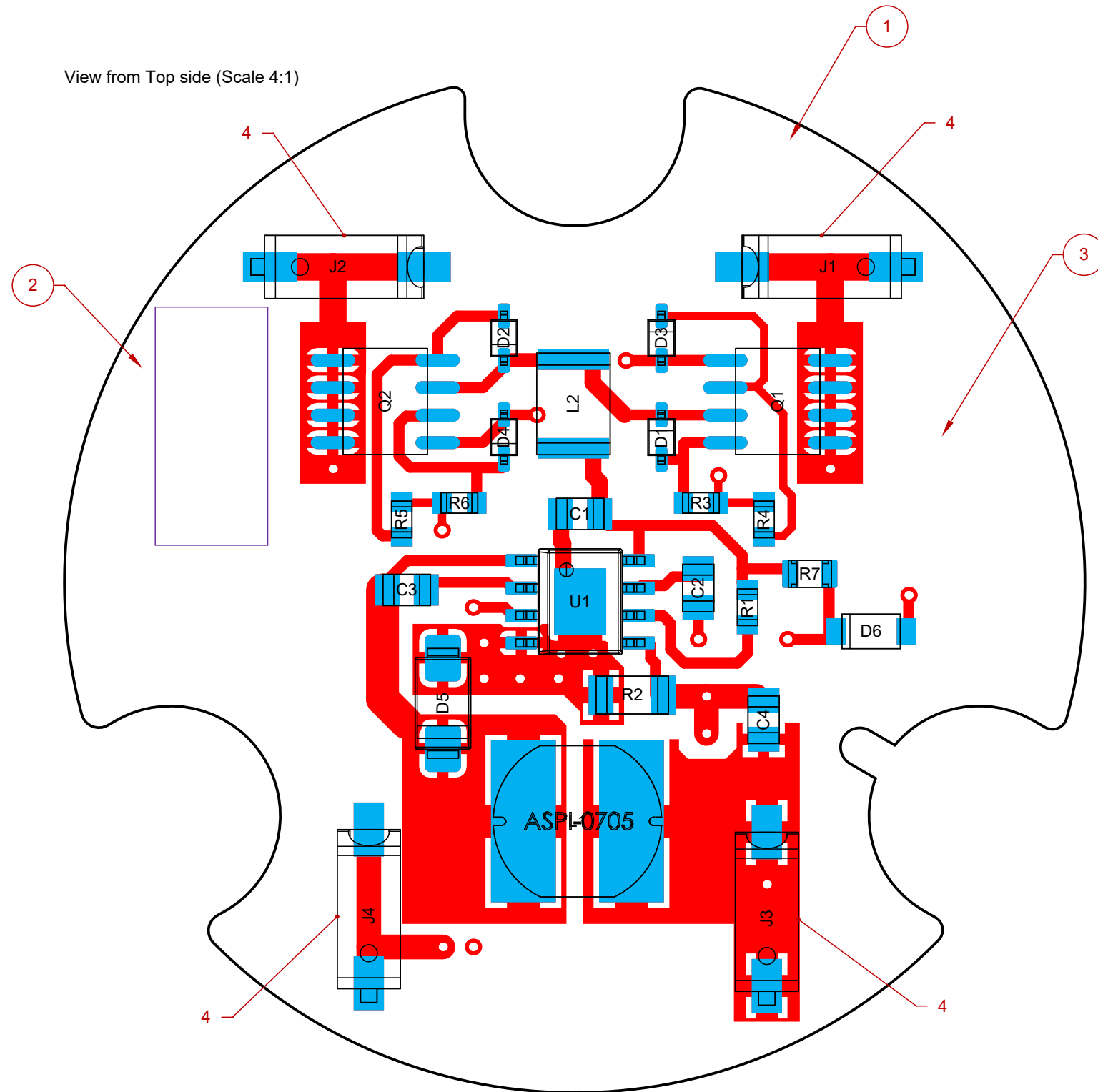
B

C

D

REV	DATE	RECORD	DESN	CHCK
3	2/11/2020	Proto-Type Release	AGC	AGC
4	6/10/2020	Pre-Pilot Release	AGC	AGC
A	3/12/2021	PROD REL EC190305001	AGC	AGC
B	04/08/2022	ADD R7 AND D6	FDP	FDP

View from Top side (Scale 4:1)



1. ALL COMPONENT MUST BE ROHS COMPLIANT.
2. CERTIFICATE OF COMPLIANCE REQUIRED FROM PC ASSEMBLY MANUFACTURER VERIFYING UL REQUIREMENTS.
3. UL RECOGNIZED (QMJU2) CONFORMAL COATING SUITABLE FOR ANSI GRADE FR4 PCB MATERIAL REATED 105 DEG. C AND USED IN ACCORDANCE WITH MANUFACTURER'S APPLICATION SPECIFICATIONS.
4. CONFORMAL COAT TOP, BOTTOM AND SIDES OF PC BOARD. AVOID CONFORMAL COATING ON CONNECTORS J1-J4
5. TO AVOID MASKING TEST POINTS, THE CONFORMAL COATING IS TO BE APPLIED AFTER THE PCB IS TESTED.

UNLESS OTHERWISE SPECIFIED: DIMENSIONS ARE IN INCHES TOLERANCES: FRACTIONS = ± 1/64 ANGULAR TOL. = ± 1/2° TWO PLACE DECIMAL ± 0.020 THREE PLACE DECIMAL ± 0.010 CONFORMS TO ASME Y14.5M DO NOT SCALE PRINT	NAME	DATE	<b>DUAL LITE</b> ® 701 Millennium Blvd. Greenville, SC 29607 (864)-678-1000
	DRAWN BY:	AGC 2/11/2020	
	CHECKED BY:	AGC 2/11/2020	
	ENG APPR.	FDP 04/08/2022	
TITLE PCB ELSS LED DRV BRD INDUSTRIAL			
MATERIAL FR4 2oz DBL	SIZE B	DWG. NO.: 93109375-1000	PART NO.: 93109375
FINISH HAL		SCALE: 1:1	SHEET 1 OF 1

This document contains confidential and proprietary information of Dual-Lite. Receipt or possession of this document does not convey any rights to reproduce or disclose its contents, or to make, use, or sell anything it may disclose. Reproduction, disclosure, or use of the document or its contents, without the specific written authorization of Dual-lite, may violate the

A

B

C

D