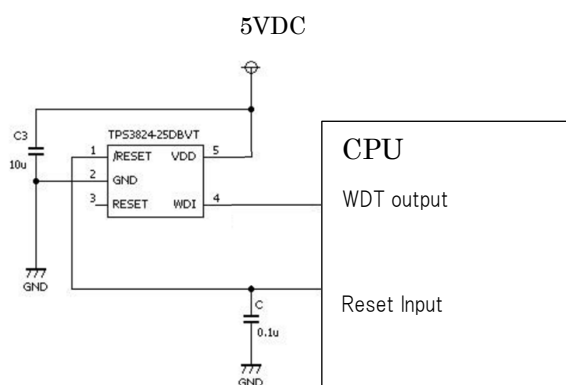


TPS 3824 as a reset IC at power shutdown and CPU freeze is used in the following circuit configuration, but when the CPU freezes and the / RESET signal did not operate when the WDI input signal stopped

- During normal operation, even if the WDI terminal and GND are short-circuited and dropped to 0 V, the / RESET signal did not operate

- The / RESET signal operated when the WDT signal was intentionally stopped on the CPU software



↑ WDI conected GND
Not RESET



↑ Stop to WDI by MCU
→It output RESET.