

1

2

3

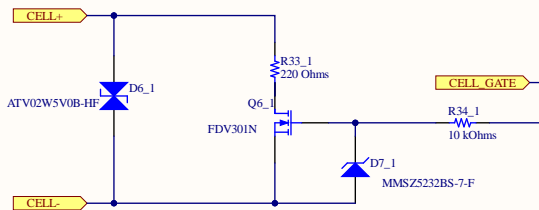
4

5

A

B

C



1

2

3

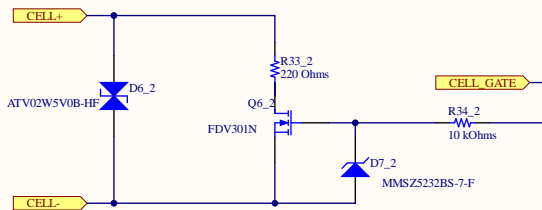
4

5

A

B

C



1

2

3

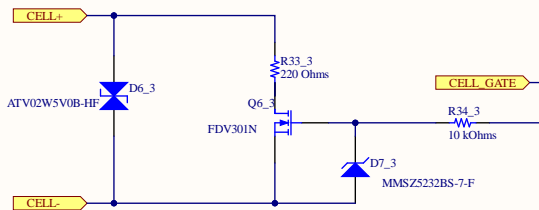
4

5

A

B

C



1

2

3

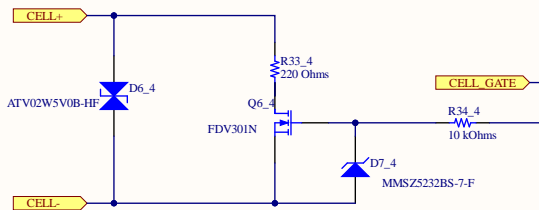
4

5

A

B

C



1

2

3

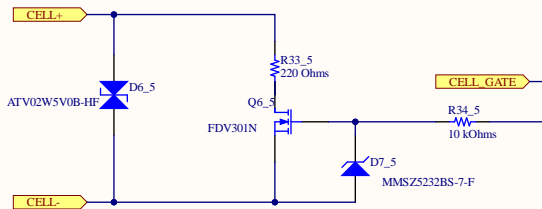
4

5

A

B

C



1

2

3

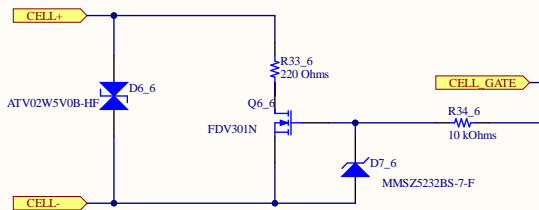
4

5

A

B

C



1

2

3

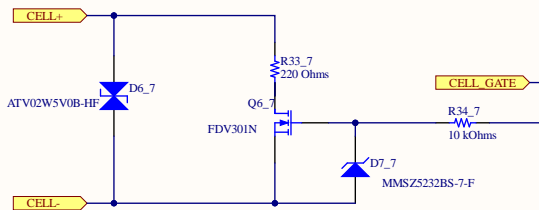
4

5

A

B

C



1

2

3

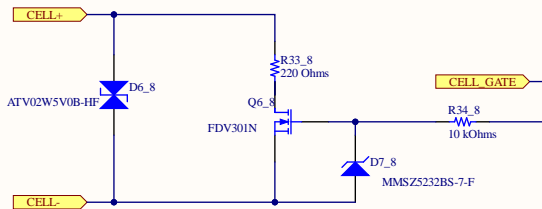
4

5

A

B

C



1

2

3

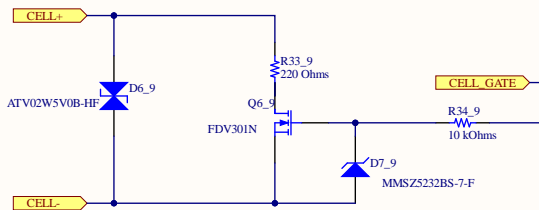
4

5

A

B

C



1

2

3

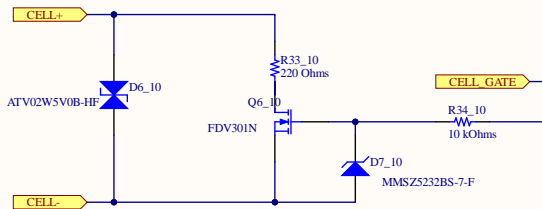
4

5

A

B

C



1

2

3

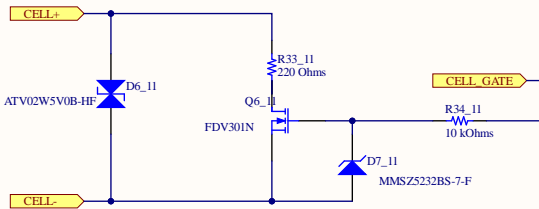
4

5

A

B

C



1

2

3

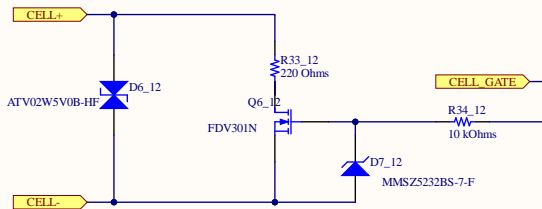
4

5

A

B

C



1

2

3

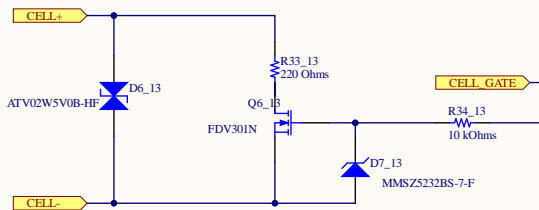
4

5

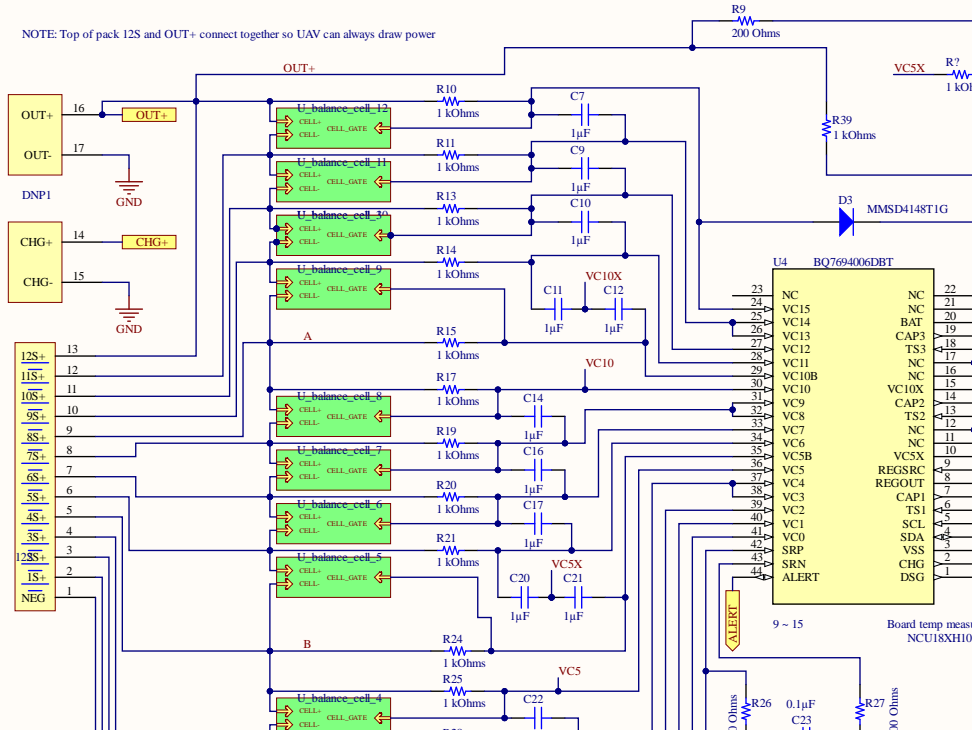
A

B

C



NOTE: Top of pack 12S and OUT+ connect together so UAV can always draw power



A

B

C

1

2

3

4

5

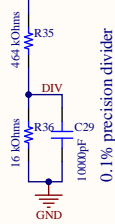
A

B

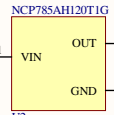
C

Top of Battery Pack (50.5V)

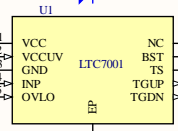
Charge Current



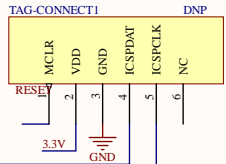
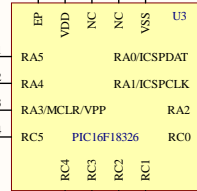
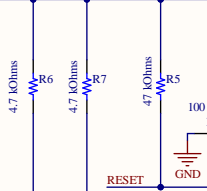
0.1% precision divider



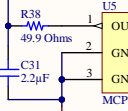
Highside N-Channel Gate Drive Circuit



+3.3V from bq769400x REFOUT



0.1% precision ref



U_BatteryMonitor
BatteryMonitor.SchDoc