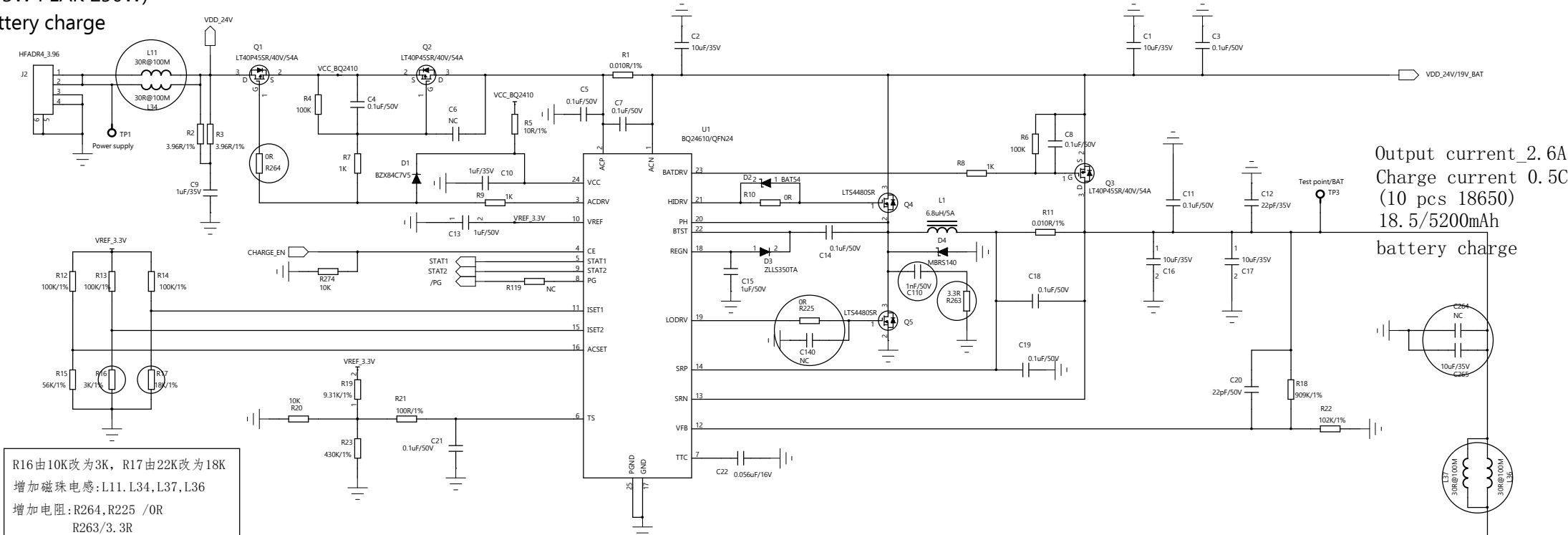
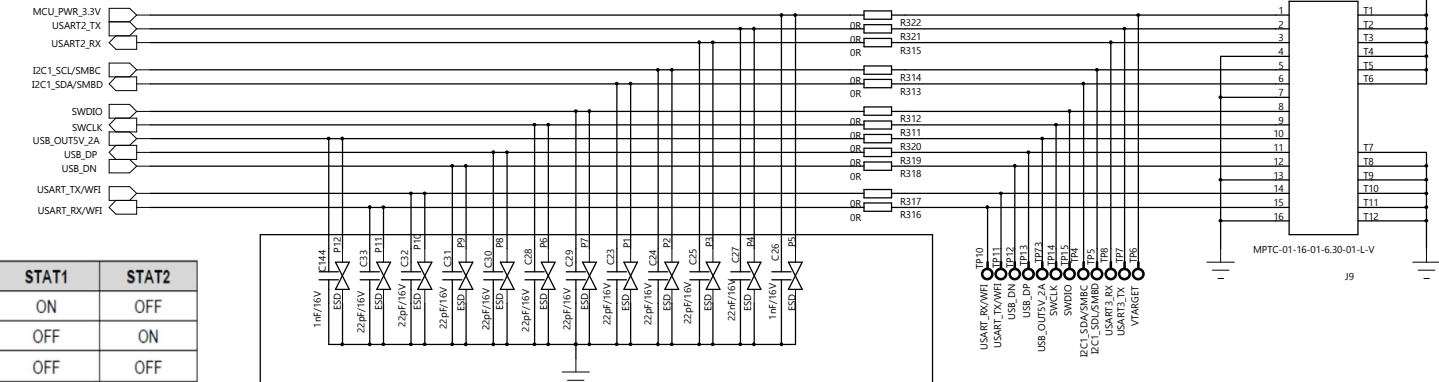


Switching power interface
Power supply /+24V 6A
(143W PEAK 250W)
battery charge



Output current_2.6A
Charge current 0.5C
(10 pcs 18650)
18.5/5200mAh
battery charge

R16由10K改为3K, R17由22K改为18K
增加磁珠电感:L11.L34.L37.L36
增加电阻:R264,R225 /OR
R263/3.3R
增加电容:C264/CN
C140/NC
C265/10uF/35V



C33. C32. C31. C30. C28. C29. C23. C24. C25. C27. C26由NC改为22pF/16V
C144由NC改为1nF/16V

CHARGE STATE	STAT1	STAT2
Charge in progress	ON	OFF
Charge complete	OFF	ON
Charge suspend, timer fault, overvoltage, sleep mode, battery absent	OFF	OFF

VDD_24V/19V_BAT

