

Thankyou so much for your support WM5295.

Kindly please review the following schematic since I am planning to design a new board due to so much unsolved errors in pervious board.

I wish that I will not repeat same errors as on current board , ***SO PLEASE DO A REVIEW FOR FOLLOWING SCHEMATIC.***

Thanks A Lot !!!

NOTE:

1. I designed circuit by referring “**TIDA-00449**” and “**TIDA-00792**”
2. Designing for Pack of 15 Cells.
3. Do we have to hold the host microcontroller till output of TPS3839 gives RST signal ? if not so , what is the purpose of uisng it?
4. The following schematics is mainly focused for proper working of BQ76940 , for rest of the interfacing with host controller , had no issue.

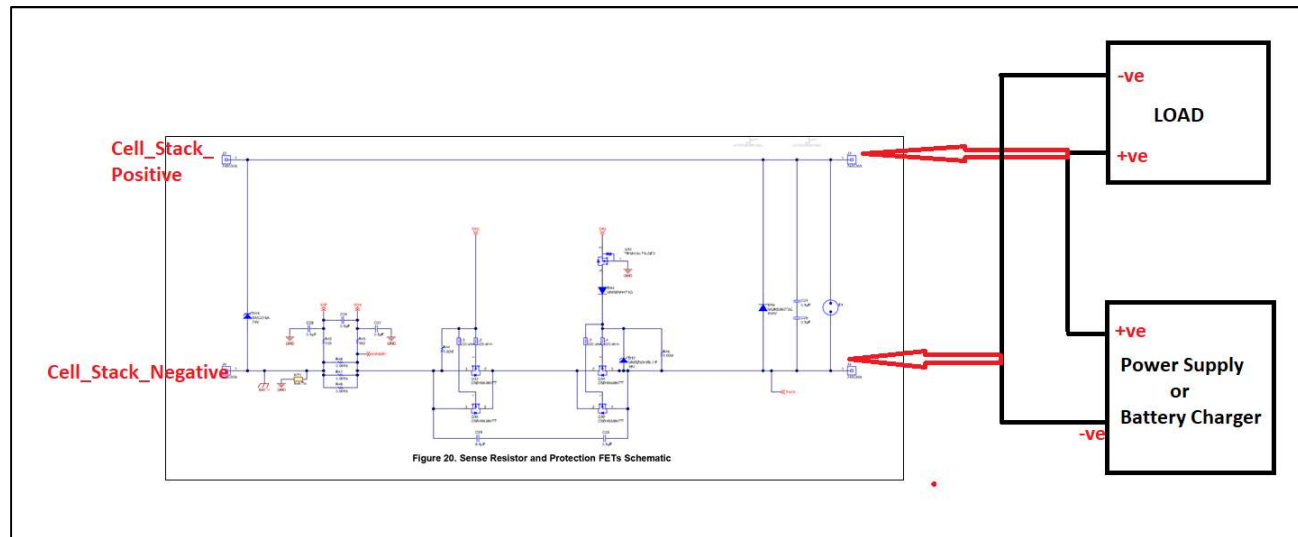
Most Important :

In both the reference designs , there are two negative terminals “BAT-” and “PACK-”.

So as per following block diagram , if I am not wrong I have to connect CELL_STACK_NEGATIVE_TERMINAL to “BAT-”

And

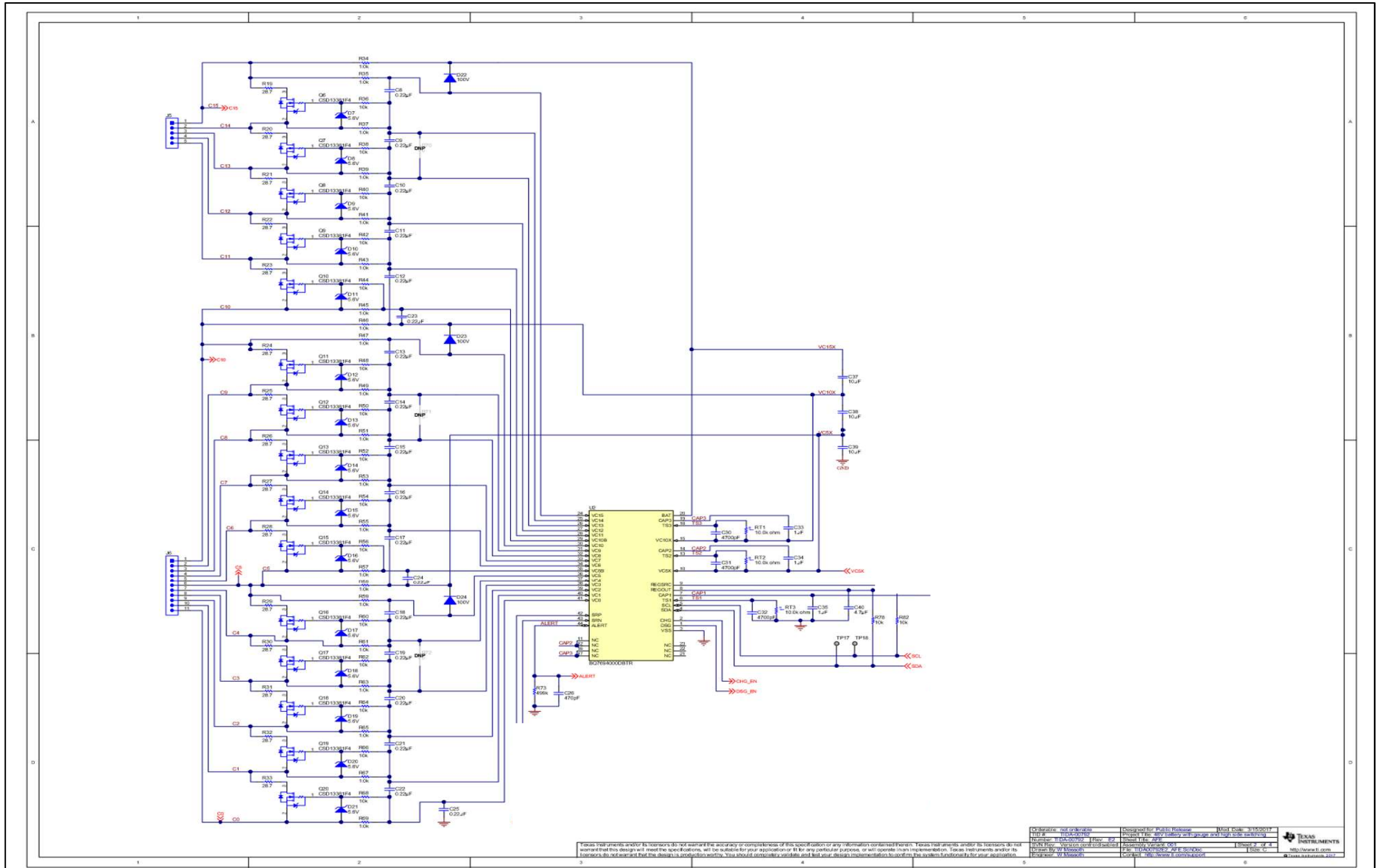
Power Supply and Load both connected to “PACK-” terminal



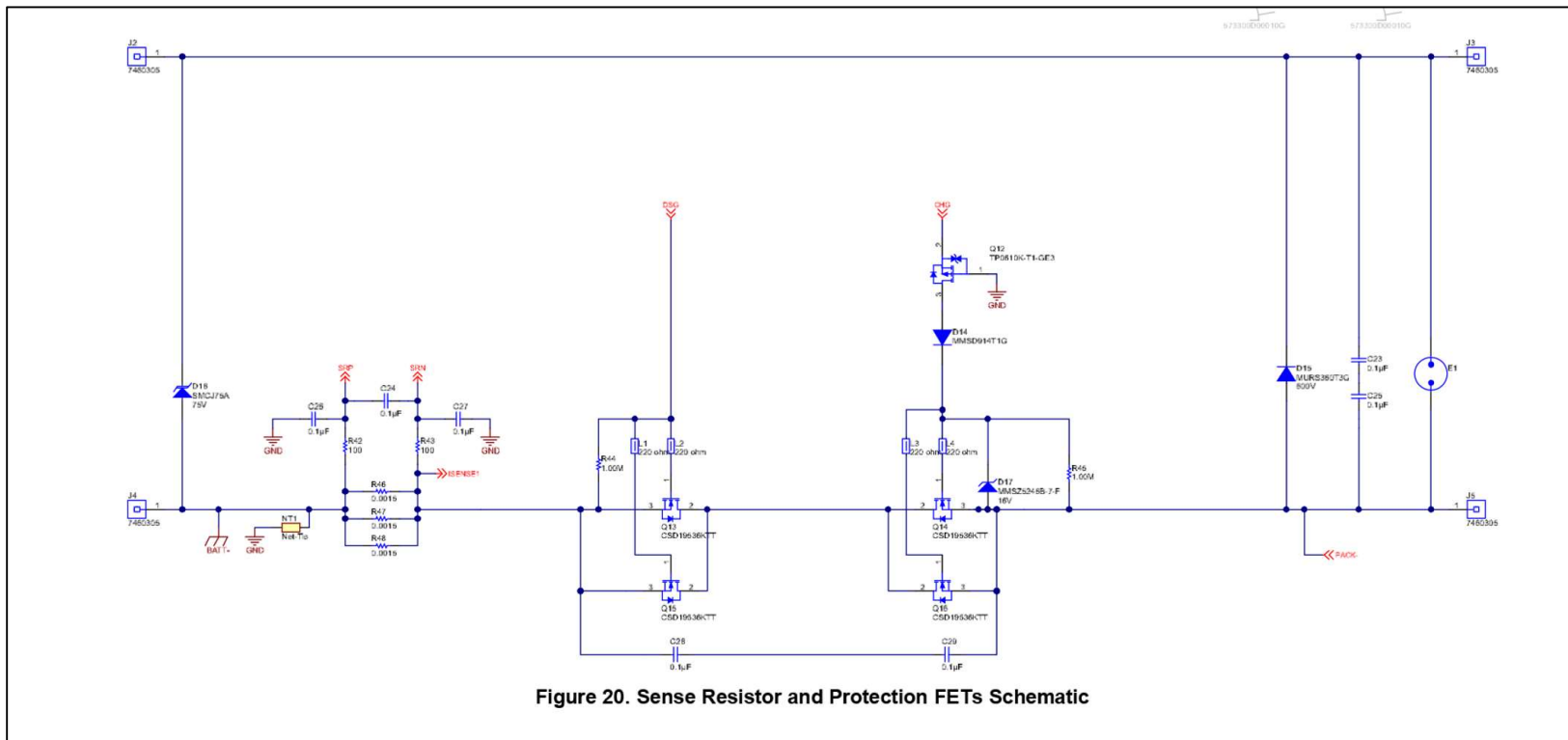
Load and Power Supply/Battery Charger is connected Parallely

15 Series Li-ion Cells management using BQ76940

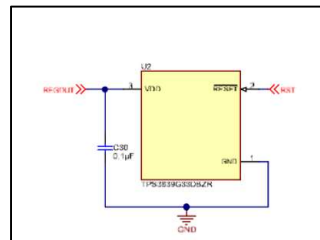
Is the following Circuit sufficient for Proper working of BQ76940.



For Cell's Input and Balancing : Referred from TIDA 00792



For Controlling external connected charger and load : referred from TIDA 00449



TPS3839 Connected to Microcontroller Input Pin : TIDA 00449