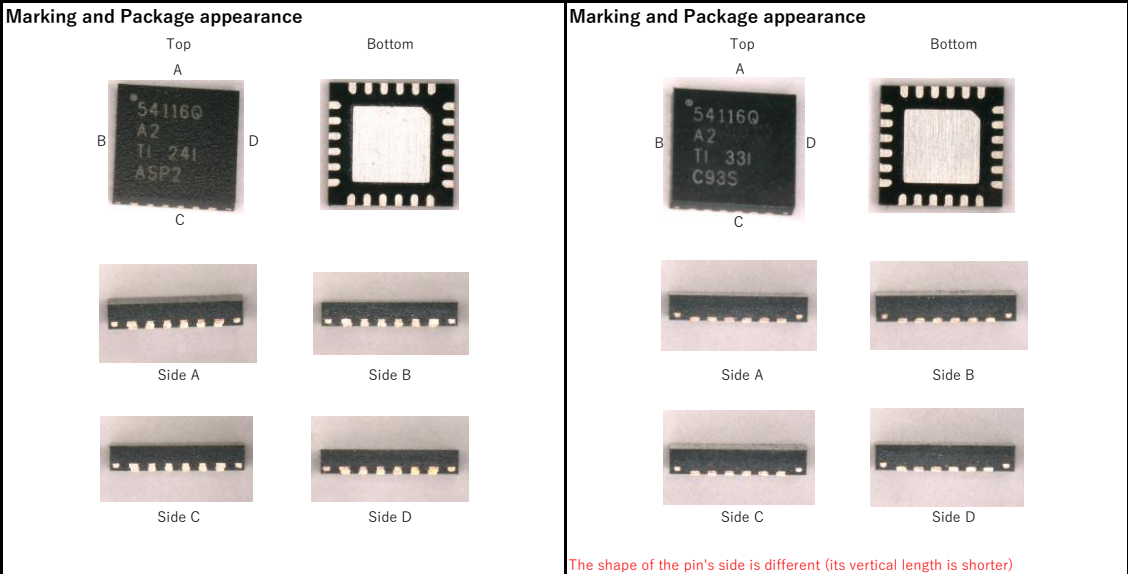


Analysis results of package appearance and cross-sectional shape of a good sample

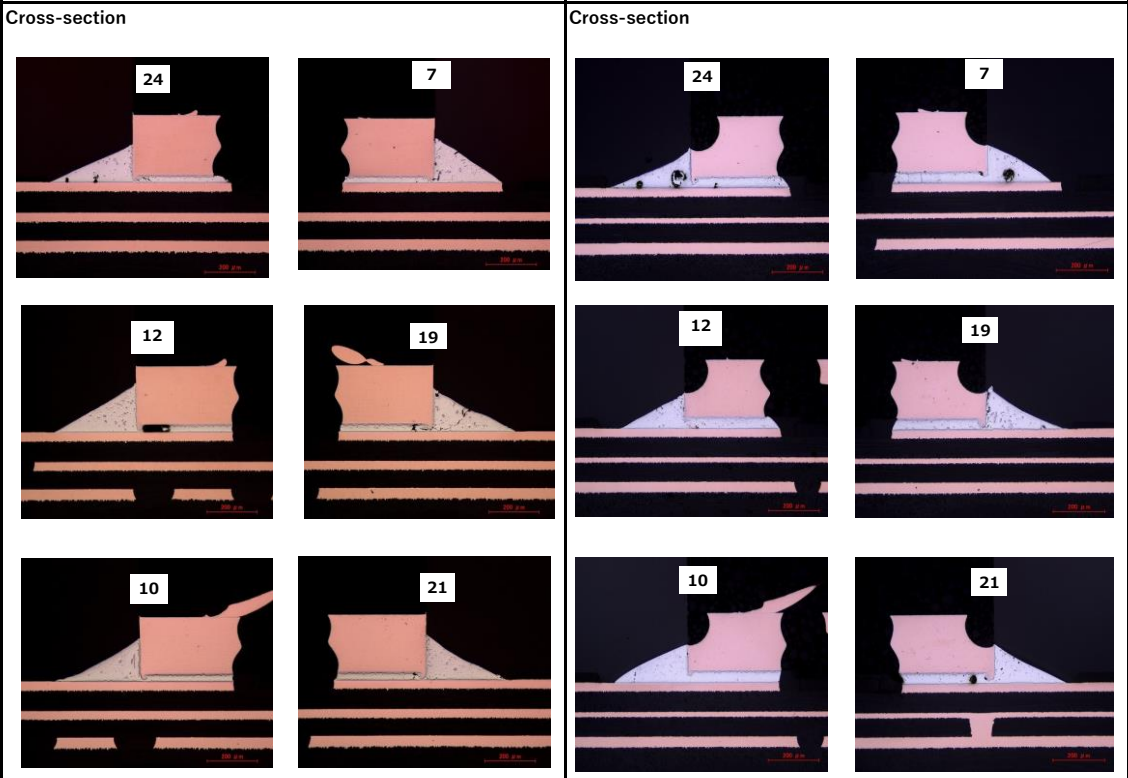
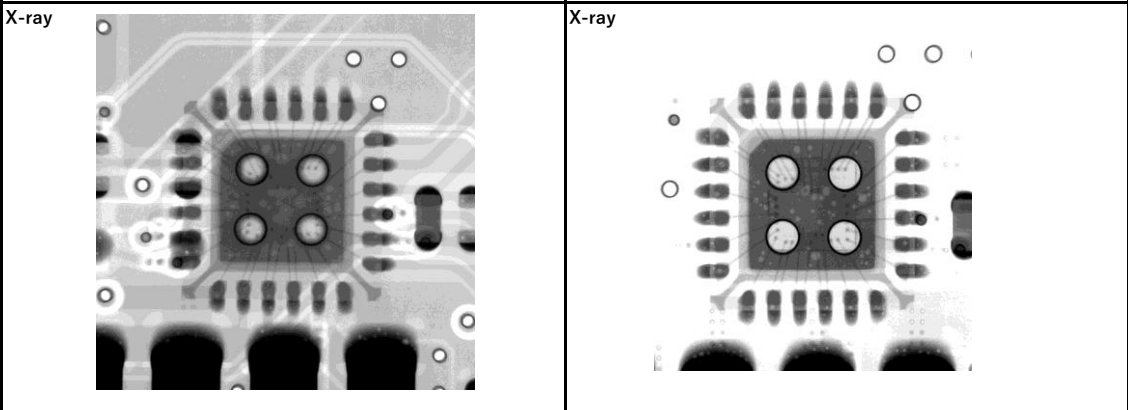
Maker Parts#: TPS54116QRTWRQ1

Sample A
2022/10

Sample B
2024/5



The shape of the pin's side is different (its vertical length is shorter)



There is a dent on the top surface of the lead frame tip
The dents affect the solder wettability and the fillet angle was slightly acute.