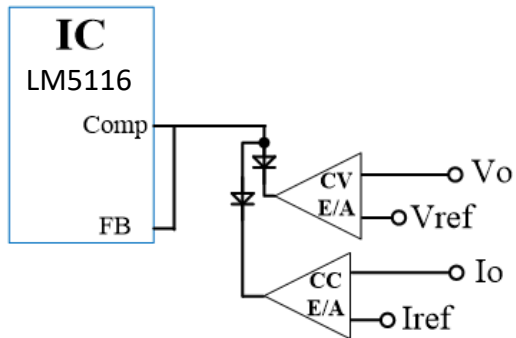


Idea-1;

Use two external error amplifiers for CV and CC regulation, and inject via diode to the error amplifier output of the IC where the Comp and Fb pins are shorted.



Idea-2;

Connect the gain and phase adjustment RC as usual between the Comp pin and Fb pin of the IC built-in amplifier, and connect an external error amplifier for CC control with a larger sink current than the IC internal error amplifier to the COMP pin via a diode.

