

**\* Electrical Specification @ 25°C:**

Inductance: (1-3): 150  $\mu$ H  $\pm$ 10% @ 100KHz, 0.1V

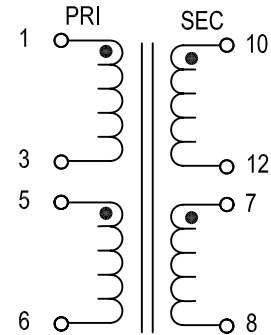
Leakage Inductance: (1-3): 5  $\mu$ H Max @ 100KHz, 0.1V, short (5+6+7+8+10+12)

RDC: (1-3): 185 m $\Omega$  Max  
 (5-6): 125 m $\Omega$  Max  
 (7-8): 95 m $\Omega$  Max  
 (10-12): 75 m $\Omega$  Max

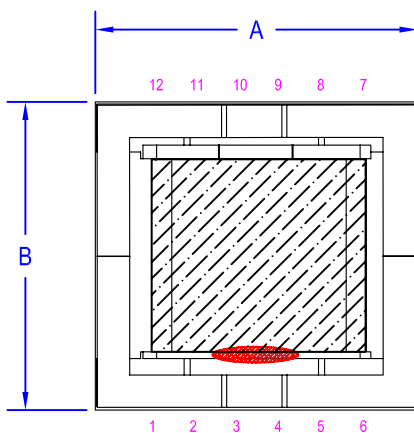
Turns Ratio: (1-3):(5-6)=1:0.076  $\pm$ 2% @ 100KHz, 0.1V  
 (1-3):(7-8)=1:0.057  $\pm$ 2%  
 (1-3):(10-12)=1:0.50  $\pm$ 2%

Hipot: (1-10): 1,500VAC, for 2 seconds, short (1+3) and (5+6+7+8+10+12)  
 (1-Core): 1,500VAC, for 2 seconds, short all windings together

**\* Schematic:**



**\* Mechanical Specification:**



**\* Dimensions Table**

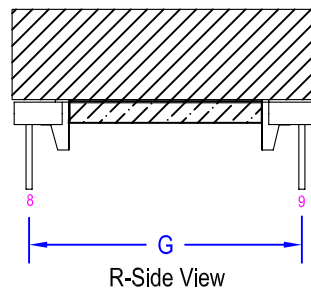
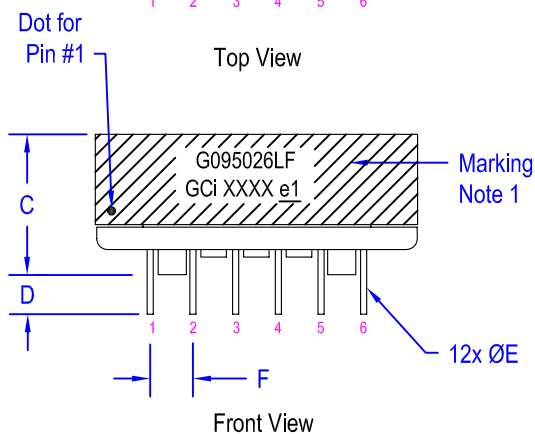
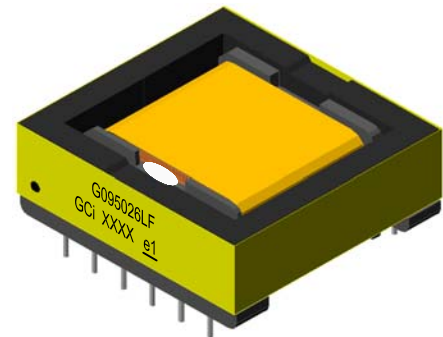
Ref	mm
A	30.5 Max
B	32.0 Max
C	14.0 Max
D	3.5 $\pm$ 0.5
E	$\varnothing$ 0.8 $\pm$ 0.2
F	5.0 $\pm$ 0.3
G	27.5 $\pm$ 0.5

**Notes:**

- Marking shall include:  
 GCi Part Number,  
 GCi Name, Date Code,  
 RoHS Symbol

**Marking**

G095026LF  
 GCi XXXX e1



**"ALL CURRENT CHANGES INDICATED BY ASTERISKS"**

Electrical / Mechanical Specification			125 W Flyback Transformer			
DESIGN ENG: Chris V.	APPD. BY: Greg W.	RELEASED BY:	REV: 2	DRAFTER: Christina T.	DATE: 04/28/09	
S/O NUMBER: 095026	GCi PART NO: G095026LF	CUSTOMER PART NO.:			SHEET 1 OF 1	
		** Proprietary Notice ** This document contains GCI Technologies, Inc. Proprietary data and is not to be copied, reproduced, used, or divulged to unauthorized persons, in whole or in part without proper authorization in writing from GCI Technologies, Inc. GCI Technologies, Inc reserves all rights herein.				
1301 Precision Drive * Plano, Texas 75074 U.S.A. * Tel: (972) 423-8411 * Fax: (972) 423-4550 * email:gci@gcitechologies.com * website:www.gcitechologies.com						