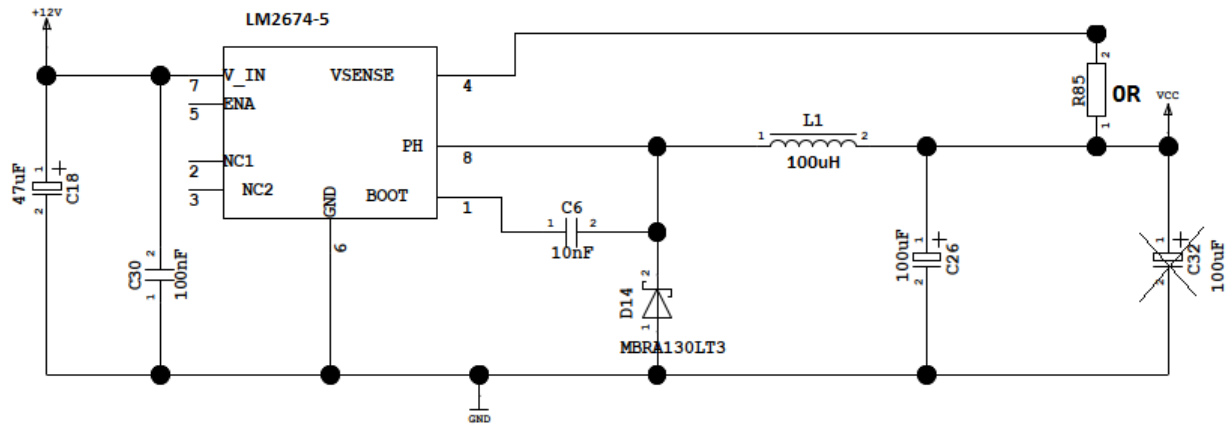
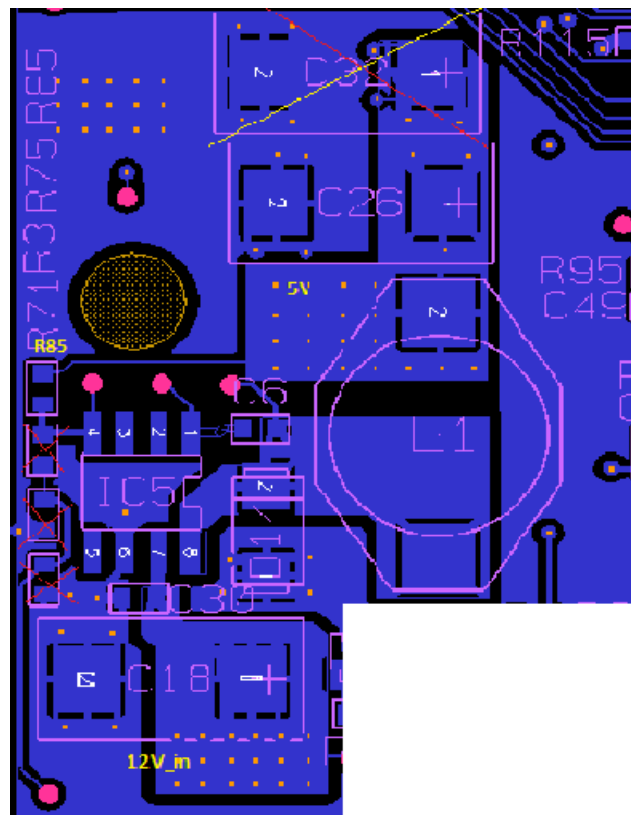


LM2674 different Load condition

Circuit Diagram



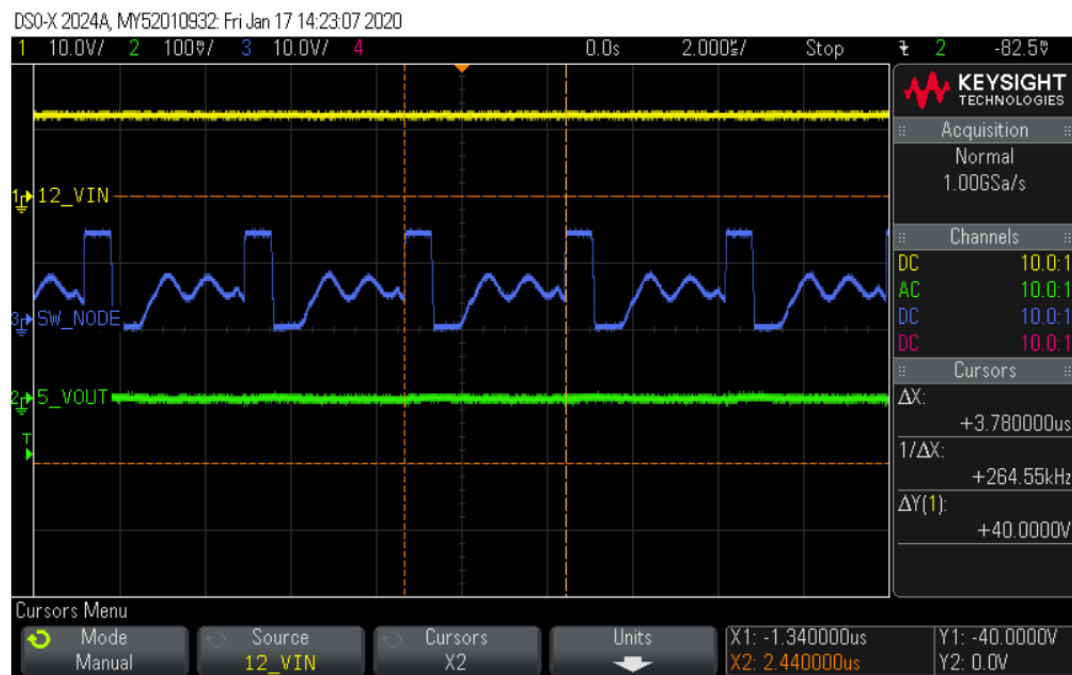
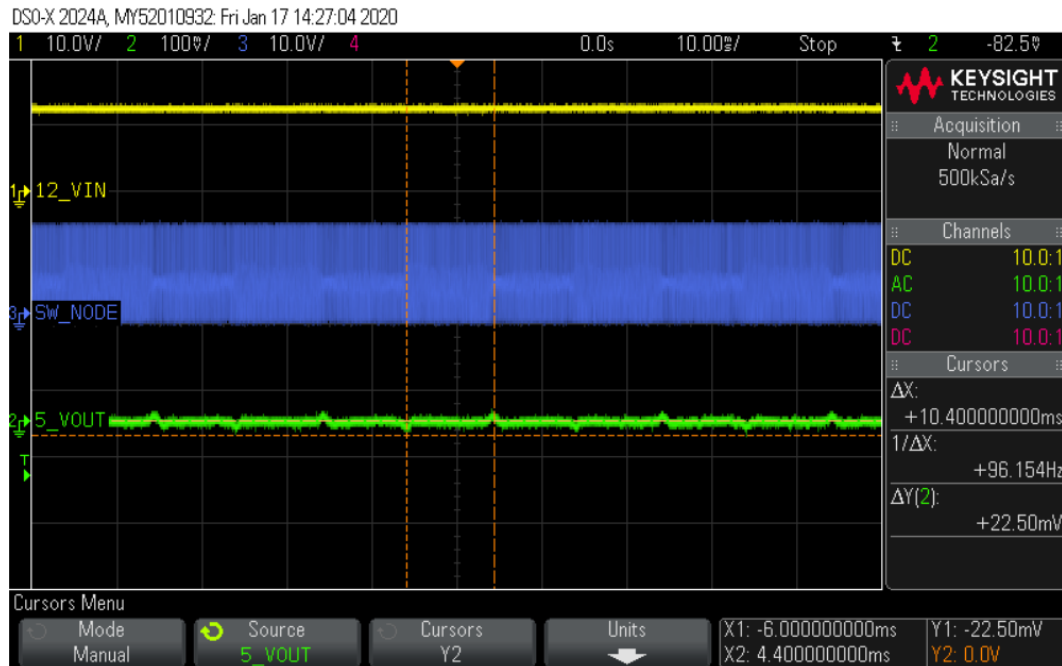
Layout



Unrestricted

Condition 1:

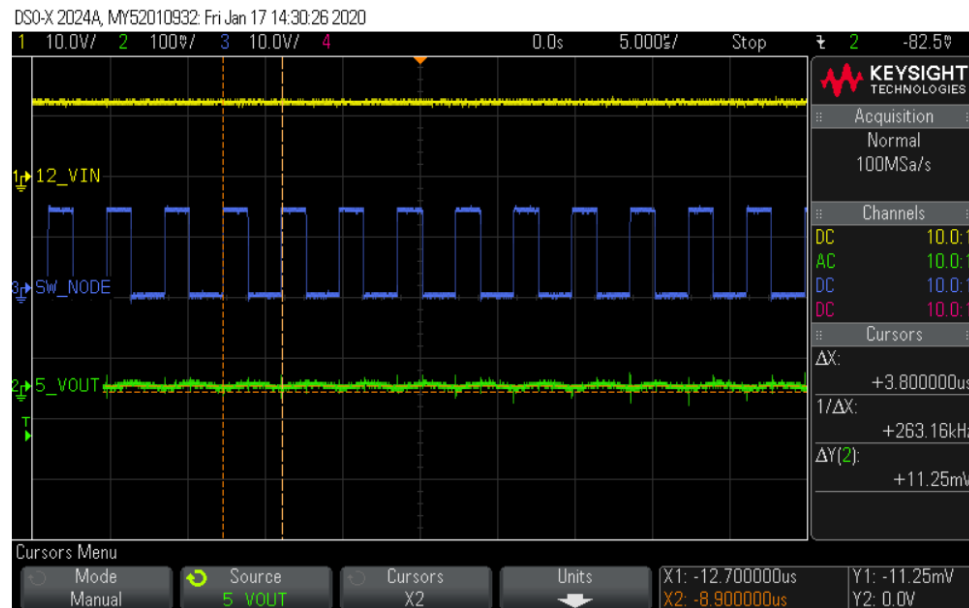
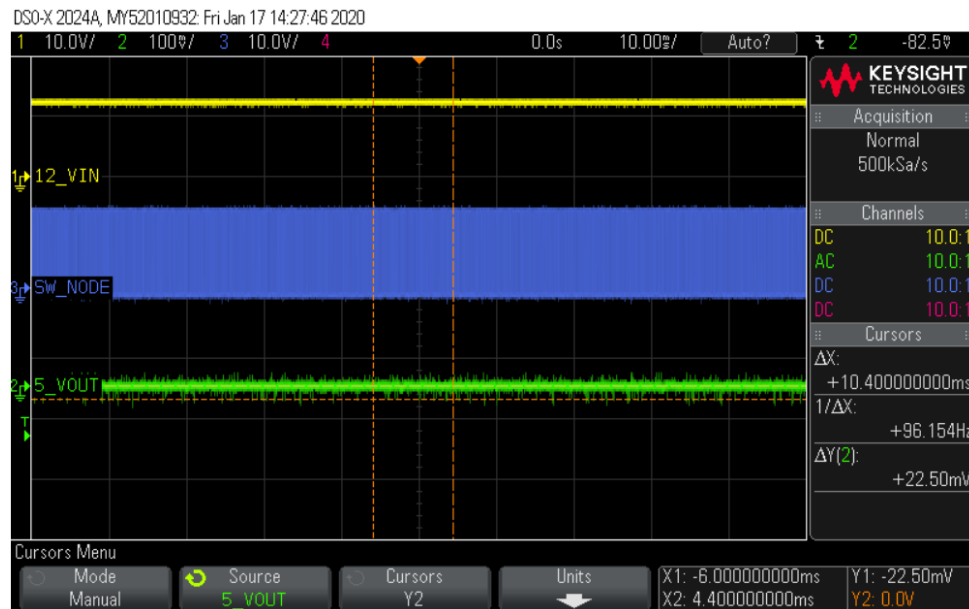
Vin=12V, Vout=5V, Iout=10mA continuous



Unrestricted

Condition 2:

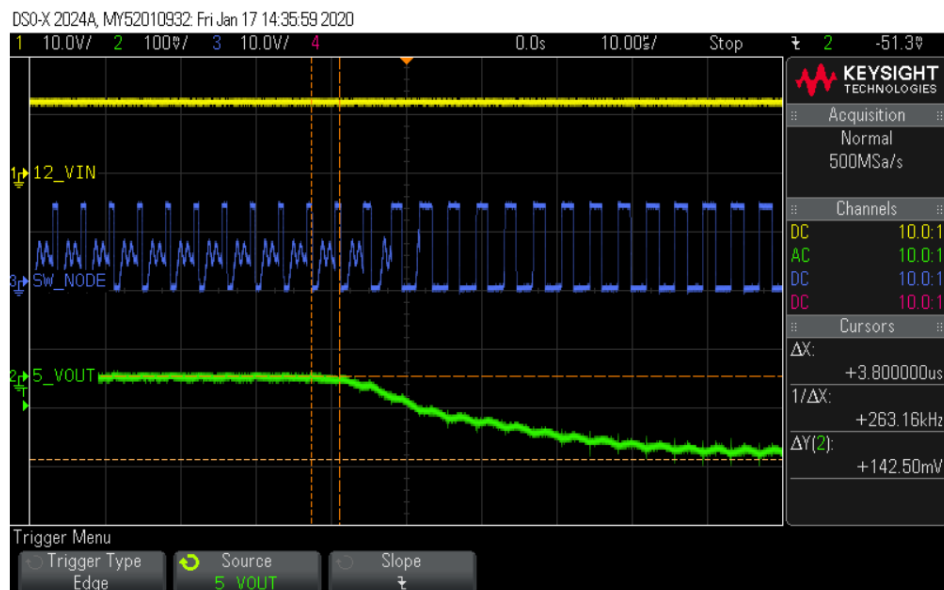
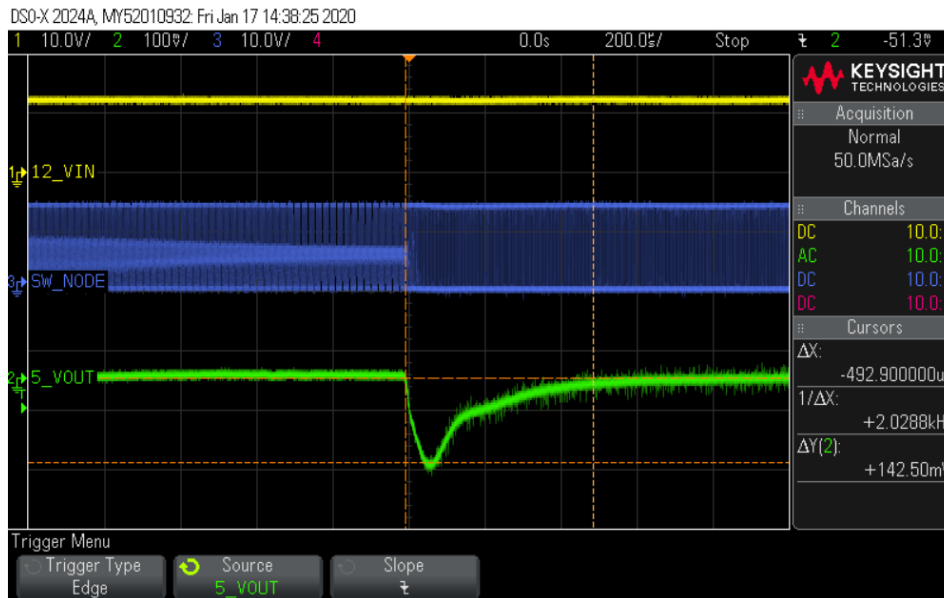
Vin=12V, Vout =5V, Iout=270mA continuous



Unrestricted

Condition 3:

$V_{in} = 12V$, $V_{out} = 5V$, I_{out} transient from 10mA to 270mA



Unrestricted