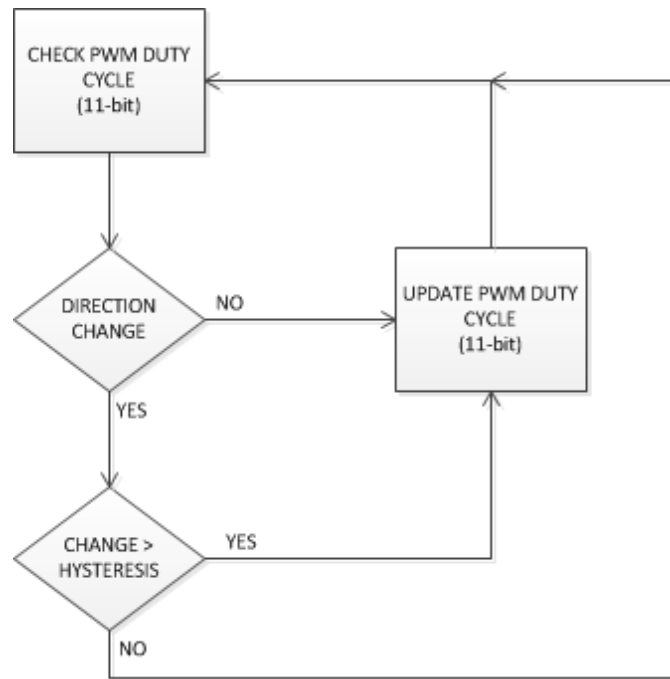


LM36922H PWM HYSTERESIS

Author: Randy Dahl
Date: 23-January-2018

Simplified PWM HYSTERESIS FSM



The LM36923 pwm hysteresis does not affect the sampling of the pwm input. It is used to determine when to update the pwm duty cycle in the event of a change in direction (i.e. ramp up to ramp down).

PWM Hysteresis with PWM input duty cycle ramp up an down

The effects of pwm hysteresis on led current is illustrated using a pwm input with duty cycle modulated using an up/down ramp function.

