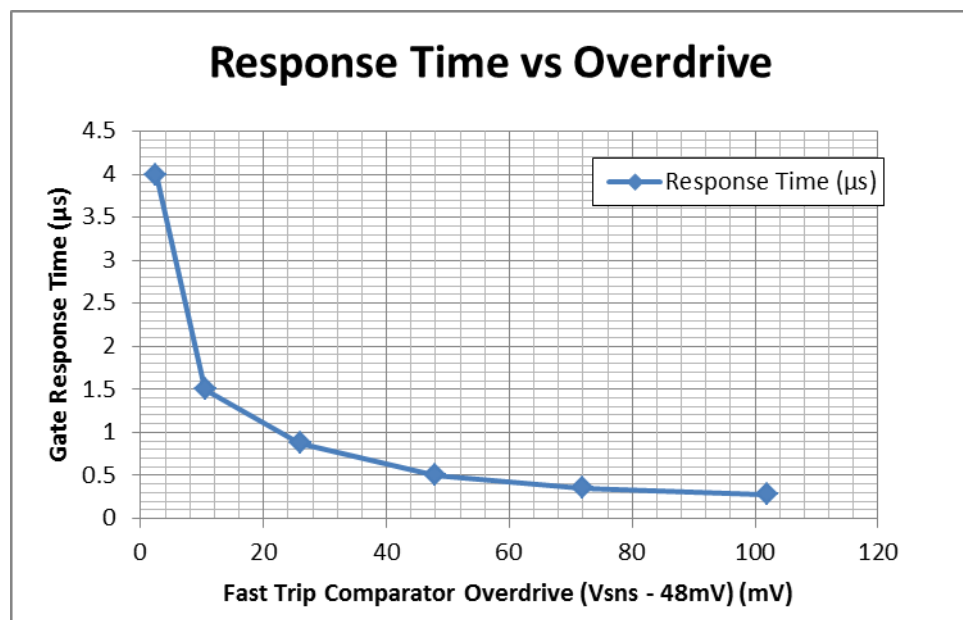
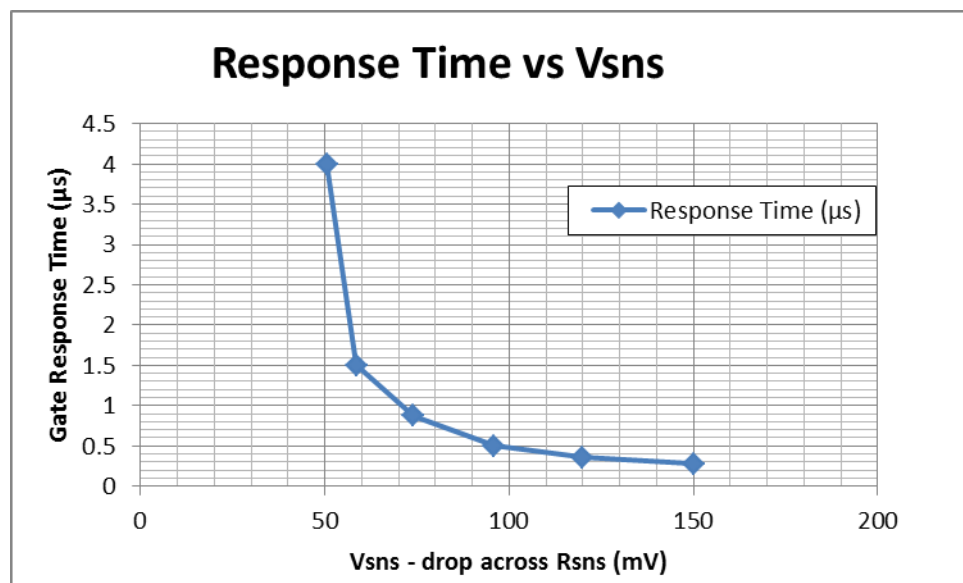


LM5066I Circuit Breaker Response Time

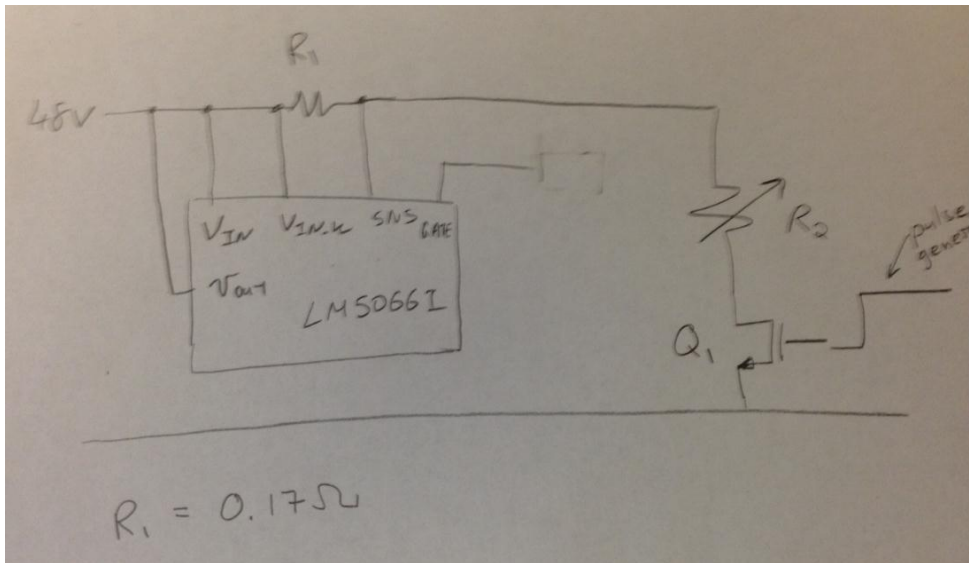
Date: 3/18/2015

Engineer: Artem Rogachev

Result Summary:



Test Set - Up



To determine the V_{sns} ($V_{INK} - SENSE$), Q_1 was turned on DC and the drop across R_1 was measured with the given R_2 . Then the pulse was applied to measure the response time. During the transient, input current was measured rather than V_{sns} , b/c V_{sns} is a low differential voltage on a common mode 48V signal.

The example below is for a V_{sns} of 75mV. This is the final value of V_{sns} . Note that there is some ramp on V_{sns} so the response time was measured from the time I_{in} reached the 50% of it's final value to the time the gate starts to come down.

