

Customize LMR64010XMF/NOPB - 3V-3.3V to 12.00V @ 0.125A

Input: DC 3 V - 3.3 V Output: 12 V at 0.125 A Temp: 30 °C [Change](#)

Summary

Efficiency: **63.6%**
 BOM Cost: **\$0.86**
 Footprint: **89 mm²**

SCHMATIC

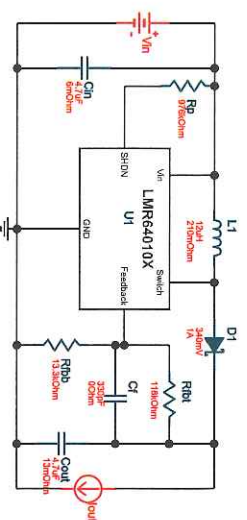
PCB LAYOUT

BILL OF MATER

Click a component to find out more information or select an alternate part.



[CHANGE OPTIMIZATION](#)



© Copyright 1995-2019



TEXAS INSTRUMENTS

Texas Instruments
Incorporated. All rights reserved

- Privacy
- Terms
- Important
- Send
- Policy
- of
- Notice
- Feedback
- Use