

Specification

Lithium Polymer Battery Pack LP503035 500mAh 3.7V with Protection Circuit Module (PCM)
 This data sheet describes the requirements and properties of lithium polymer rechargeable battery pack manufactured by LiPol Battery Co., Ltd - China

Mechanical Characteristics

- Cell ▶ LP503035
- PCM ▶ Yes
- NTC ▶ No
- Configuration ▶ 1S1P
- Weight ▶ appr. 10g
- Connector ▶ JST PHR-2

Electrical Specification

- Rated Capacity ▶ 500mAh min, 500mAh typ.
- Nominal Voltage ▶ 3.7V
- Wat-Hour Rating ▶ 1.85Wh
- Max. Operating Voltage Range ▶ 2.75V to 4.20V
- Max. Charge Voltage ▶ 4.20V ±50mV
- Max. Charge Current ▶ 250mA
- Standard Charge Current ▶ 100mA
- Max. Discharge Current ▶ 500mA
- Standard Discharge Current ▶ 250mA
- Discharge Cut Off ▶ 2.75V
- Internal Impedance ▶ <200mΩ
- Expected Cycle Life @ (0.5C/0.5C) @ 23±5°C ▶ 500 cycles ≥ 80%

Cell Protection

- Overcharge Detection ▶ 4.275 ±50mV (0.7 to 1.3sec. delay, release 4.075V ±50mV)
- Overdischarge Detection ▶ 2.75V ±50mV (14 to 26msec. delay, resume 3.05V ±50mV)
- Overcurrent Detection ▶ 2A to 2.5A (8 to 16msec. delay)

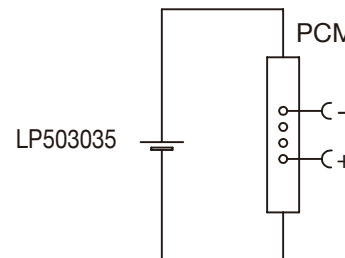
Ambient Conditions

- Charge Temp. Range ▶ +10°C to +45°C
- Discharge Temp. Range ▶ -20°C to +60°C
- Storage Temp. Range ▶ 1 year at -20°C to +30°C >70%
- ▶ 3 moths at -20°C to +45°C >70%
- ▶ 1 month at -20°C to +60°C >70%

Environmental and Safety

Please follow LiPol Handling and Safety Precautions for Lithium Polymer Battery. This battery meets the requirements of Battery Directives, and the battery parts are IEC62133-2-2017 & RoHS-Compliant. For more safety precautions and performance standards, please go to www.lipolbattery.com/support.html

Circuit diagram



Mae in mm All dimensions in mm	Freimatoleranzen Generaltoleranzen	Date		Name	
		Erst. / Orig	10.02.2022	Xie Qingfang	
Als Betriebsgeheimnis anvertraut, alle Rechte vorbehalten	up to 6	0,1	Gepr./Check	10.02.2022	Guo Daxia
	over 6 up to 30	0,2	Benennung/ Designation		
Proprietary data, company confidential, all rights reserved.	over 30 up to 100	0,3	LP503035		
	over 100	0,5	Origin:		

LiPol Battery

Zchng. / Dwg. Nr. **1 FD_3855_10** Index