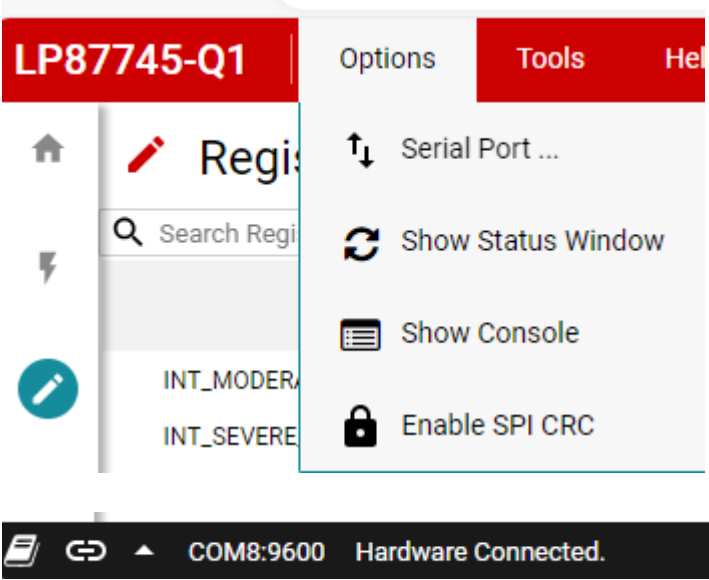
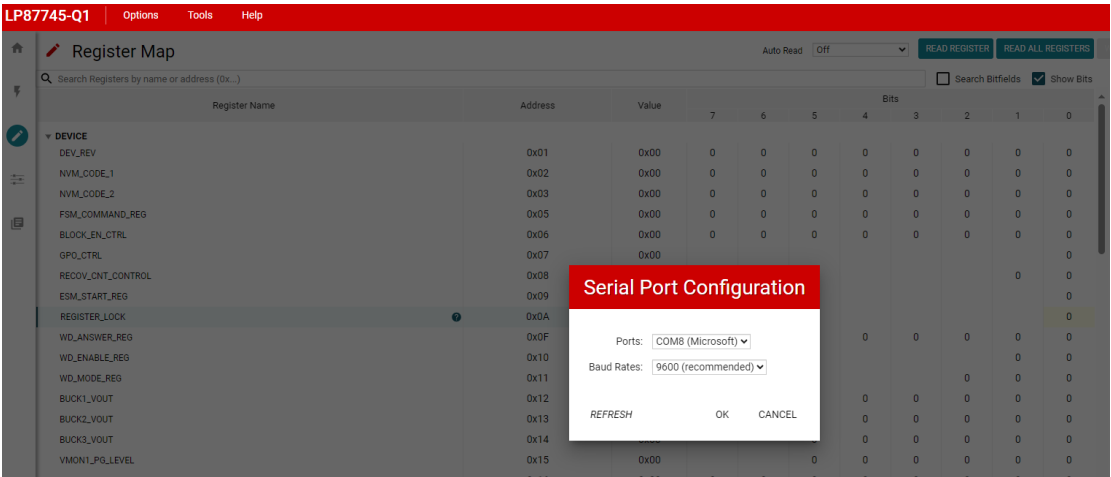


1. Serial port connection



2. Register map default status:

Immediately write setting: (Sometimes can write successfully, sometimes write bits will jump back to default settings immediately, it can see on the page)

But, in the result, no any action after changing the bits successfully and false

REGISTER_LOCK	0x0A	0x00								0
BUCK2_VOUT	0x13	0x0A			0	0	1	0	1	0
CONFIG_CRC_CONFIG	0x62	0x00						0	0	0

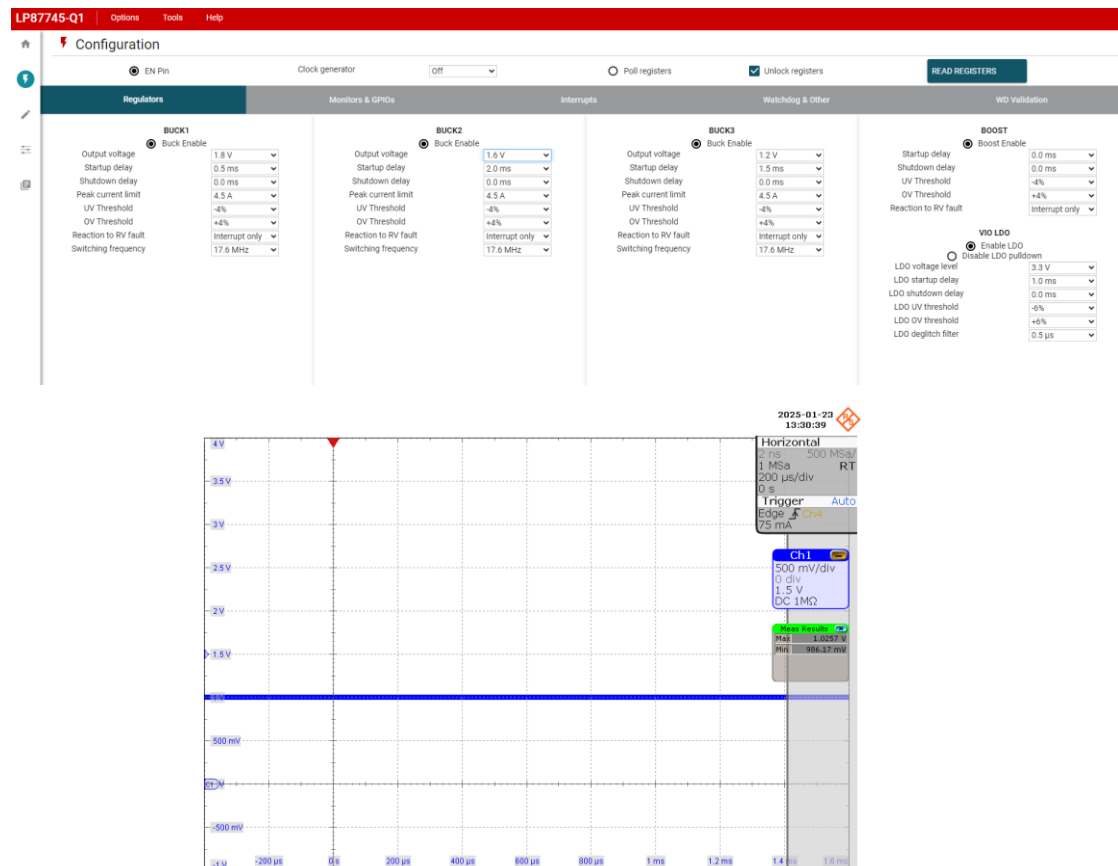
3. Same behavior results, even changing to the “Deferred write” setting

Auto Read

Deferred Write

4. Change to use the GUI interface:

Do the unlock and change the buck2 voltage from the 1V to 1.6V, but result is no any action



Then, click the read register button, the page will jump back to default settings immediately.

LP87745-Q1 Options Tools Help

Configuration

☒ EN Pin Clock generator ☐ Poll registers ☐ Unlock registers

Regulators

MONITORS & GPIOs

Interrupts

Watchdog & Other

WD Validation

BUCK1

BUCK2

BUCK3

BOOST

VIO LDO

Output voltage ☒ Buck Enable 1.8 V

Startup delay 0.5 ms

Shutdown delay 0.0 ms

Peak current limit 4.5 A

UV Threshold -4%

OV Threshold +4%

Reaction to RV fault Interrupt only

Switching frequency 17.6 MHz

Output voltage ☒ Buck Enable 1.6 V

Startup delay 2.0 ms

Shutdown delay 0.0 ms

Peak current limit 4.5 A

UV Threshold -4%

OV Threshold +4%

Reaction to RV fault Interrupt only

Switching frequency 17.6 MHz

Output voltage ☒ Buck Enable 1.2 V

Startup delay 1.5 ms

Shutdown delay 0.0 ms

Peak current limit 4.5 A

UV Threshold -4%

OV Threshold +4%

Reaction to RV fault Interrupt only

Switching frequency 17.6 MHz

Startup delay ☒ Boost Enable 0.0 ms

Shutdown delay 0.0 ms

UV Threshold -4%

OV Threshold +4%

Reaction to RV fault Interrupt only

LDO voltage level ☒ Enable LDO Disable LDO pull-down 3.3 V

LDO startup delay 1.0 ms

LDO shutdown delay 0.0 ms

LDO UV threshold -4%

LDO OV threshold +4%

LDO deglitch filter 0.5 μ s