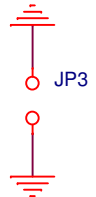
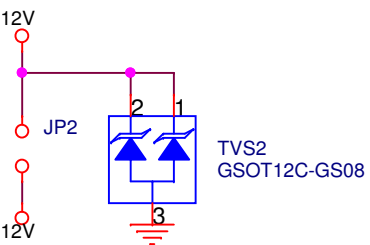
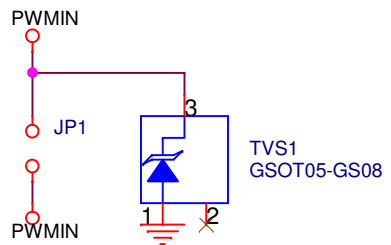
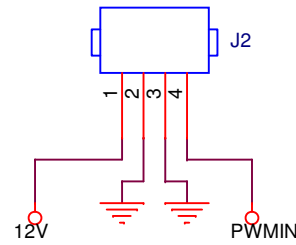


WHEN I CONNECT THE FILTER TO THE CIRCUIT, IT BLOWS THE HIGH-SIDE DRIVE OF THE UCC27712. I HAVE CONNECTED PURE RESISTIVE LOADS TO THE CIRCUIT AND IT DOESN'T DAMAGE THE UCC27712. IT SEEMS TO NOT LIKE THE INDUCTOR?



Title		
HIGH-SIDE MOSFET GATE DRIVER USING BACK-TO-BACK NFETS		
Size A	Document Number	Rev P
	<Doc>	
Date:	Wednesday, June 19, 2024	Sheet 1 of 1