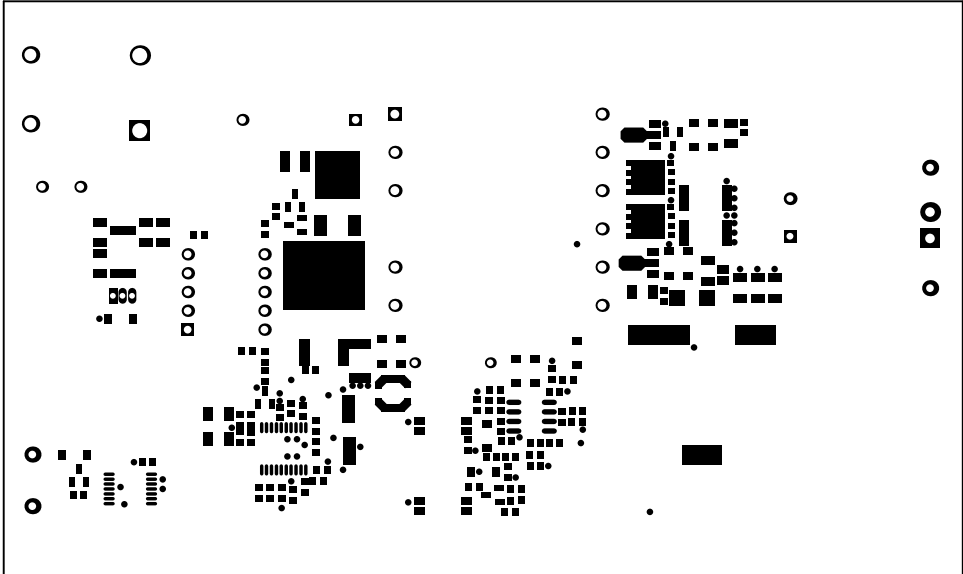
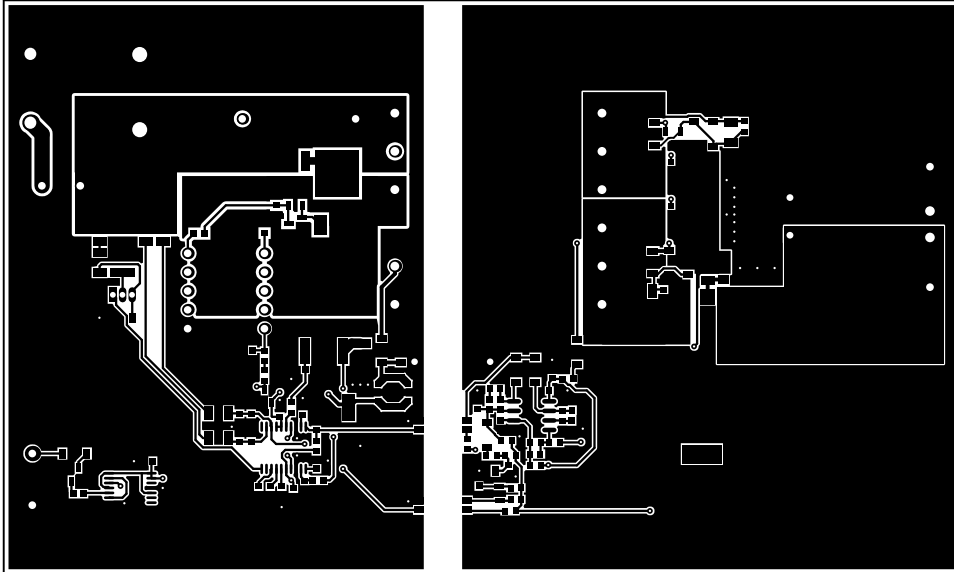


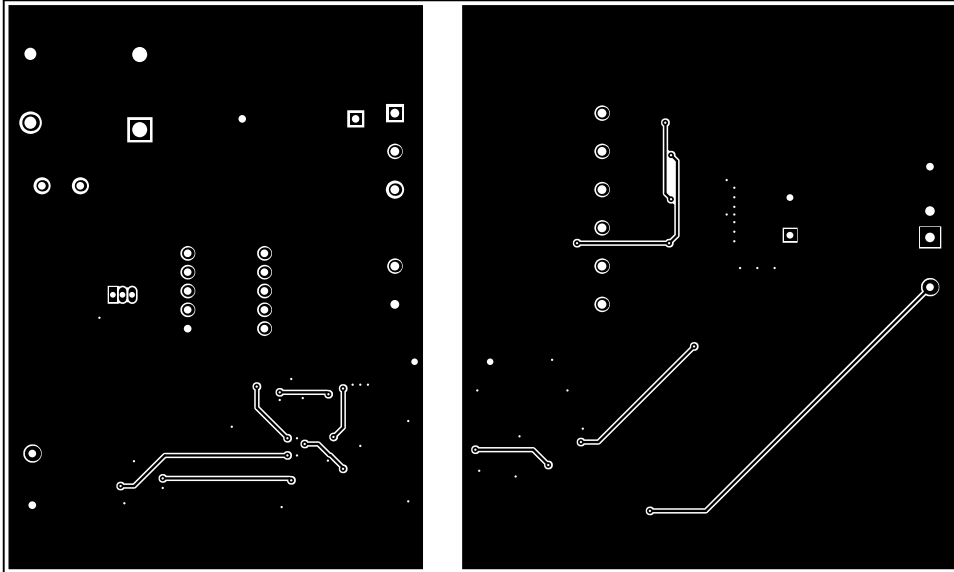
ALL ARTWORK VIEWED FROM TOP SIDE	BOARD #: PMP6961	REV: E	SUN REV: Not In VersionControl
LAYER NAME = Top Overlay			
PLOT NAME = Top Overlay	GENERATED : 1/22/2014 10:55:55 AM	TEXAS INSTRUMENTS	



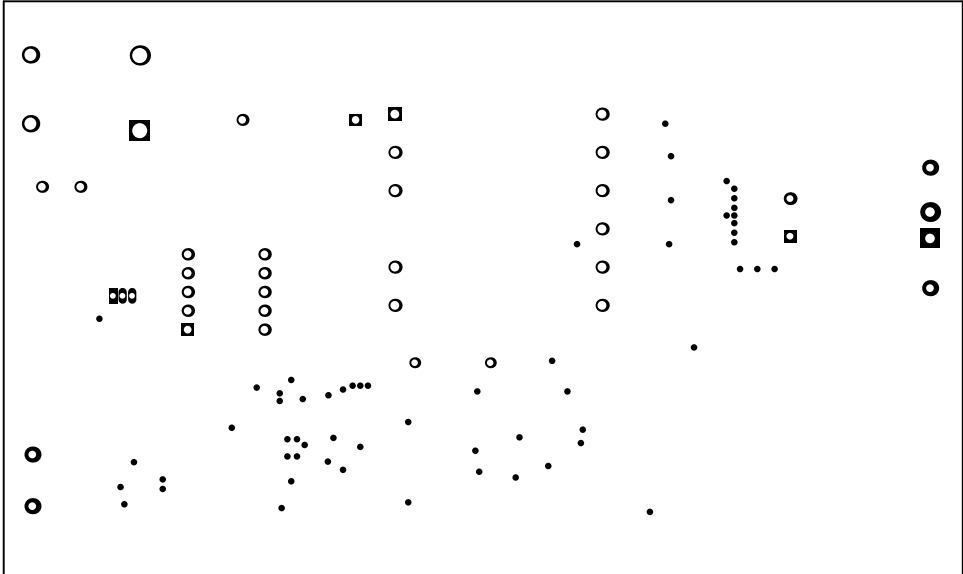
ALL ARTWORK VIEWED FROM TOP SIDE	BOARD #: PMP6961	REV: E	SUN REV: Not In VersionControl
LAYER NAME = Top Solder			
PLOT NAME = Top Solder Mask	GENERATED : 1/22/2014 10:55:56 AM	TEXAS INSTRUMENTS	



ALL ARTWORK VIEWED FROM TOP SIDE	BOARD #: PMP6961	REV: E	SUN REV: Not In VersionControl
LAYER NAME = Top Layer			
PLOT NAME = Top Layer	GENERATED : 1/22/2014 10:55:57 AM	TEXAS INSTRUMENTS	



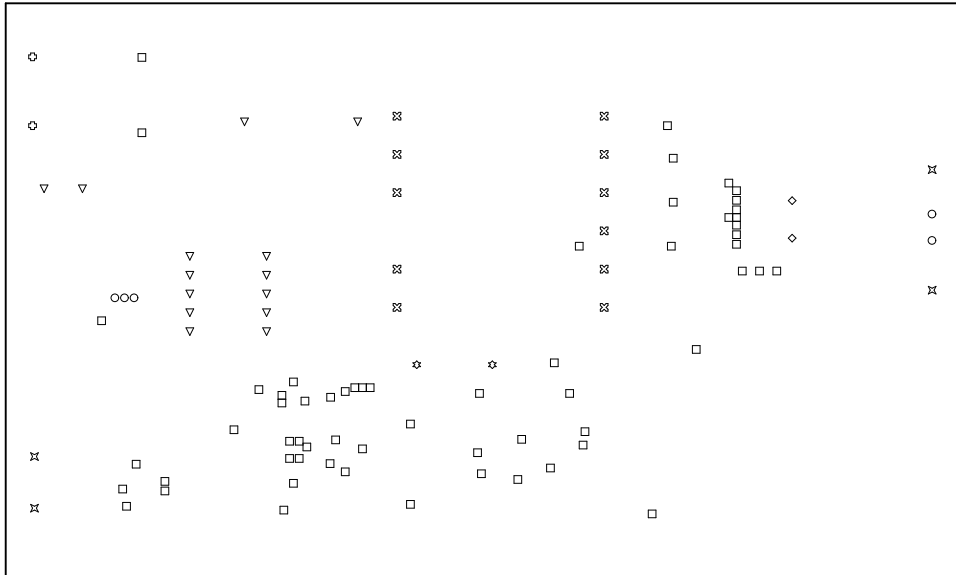
ALL ARTWORK VIEWED FROM TOP SIDE	BOARD #: PMP6961	REV: E	SUN REV: Not In VersionControl
LAYER NAME = Bottom Layer			
PLOT NAME = Bottom Layer	GENERATED : 1/22/2014 10:55:58 AM	TEXAS INSTRUMENTS	



ALL ARTWORK VIEWED FROM TOP SIDE	BOARD #: PMP6961	REV: E	SUN REV: Not In VersionControl
LAYER NAME = Bottom Solder			
PLOT NAME = Bottom Solder Mask	GENERATED : 1/22/2014 10:55:59 AM	TEXAS INSTRUMENTS	



ALL ARTWORK VIEWED FROM TOP SIDE	BOARD #: PMP6961	REV: E	SUN REV: Not In VersionControl
LAYER NAME = Bottom Overlay			
PLOT NAME = Bottom Overlay	GENERATED : 1/22/2014 10:55:59 AM	TEXAS INSTRUMENTS	



Symbol	Hit Count	Tool Size	Plated	Hole Type
□	59	12mil (0.305mm)	PTH	Round
○	3	29.528mil (0.75mm)	PTH	Round
⊗	2	33.465mil (0.85mm)	PTH	Round
◇	2	35.433mil (0.9mm)	PTH	Round
▽	14	39.37mil (1mm)	PTH	Round
⊗	4	40mil (1.016mm)	PTH	Round
⊗	11	45.3mil (1.151mm)	PTH	Round
○	2	50mil (1.27mm)	PTH	Round
⊗	2	63mil (1.6mm)	PTH	Round
□	2	78.74mil (2mm)	PTH	Round
101 Total				

Drill Table

ALL ARTWORK VIEWED FROM TOP SIDE	BOARD #: PMP6961	REV: E	SUN REV: Not In VersionControl
LAYER NAME = Drill Drawing			
PLOT NAME = Drill Drawing	GENERATED : 1/22/2014 10:56:00 AM	TEXAS INSTRUMENTS	



←1000 (mil)→

ALL ARTWORK VIEWED FROM TOP SIDE	BOARD #: PMP6961	REV: E	SUN REV: Not In VersionControl
LAYER NAME = M2 Board Dimensions			
PLOT NAME = Board Dimensions	GENERATED : 1/22/2014 10:56:01 AM	TEXAS INSTRUMENTS	