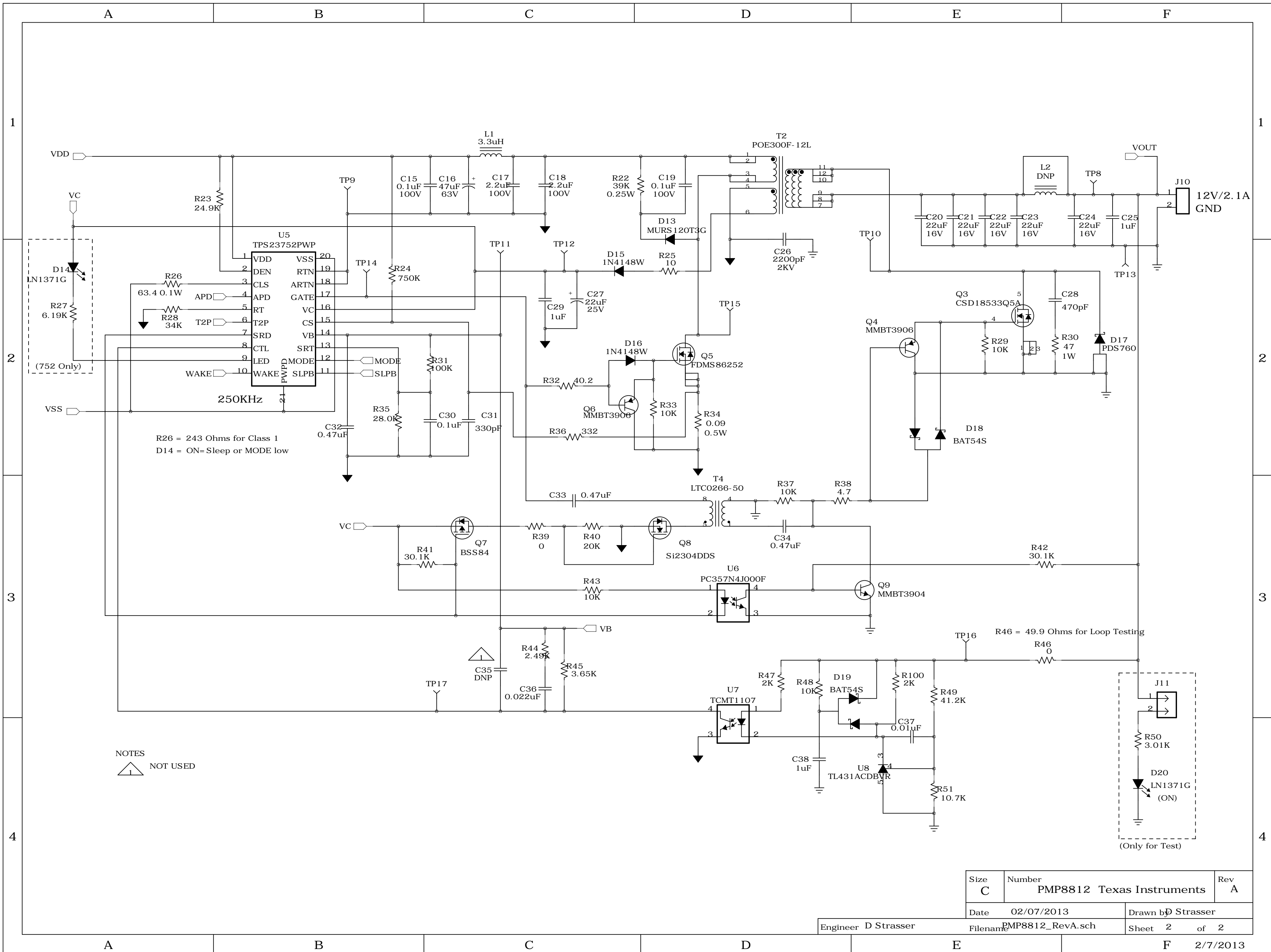



Build on PWR145 Rev A PCB
 REFDES higher than 99 not on PCB

Title		
High Efficiency 12V PoE Converter		
Size	Number	Rev
C	PMP8812 Texas Instruments	A
Date	02/07/2013	Drawn by
		D Strasser
Filename	PMP8812_RevA.sch	Sheet
		1 of 2

Engineer D Strasser



NOTES
 NOT USED

R26 = 243 Ohms for Class 1
 D14 = ON= Sleep or MODE low

Size C	Number PMP8812 Texas Instruments	Rev A
Date 02/07/2013	Drawn by D Strasser	
Engineer D Strasser	Filename PMP8812_RevA.sch	Sheet 2 of 2