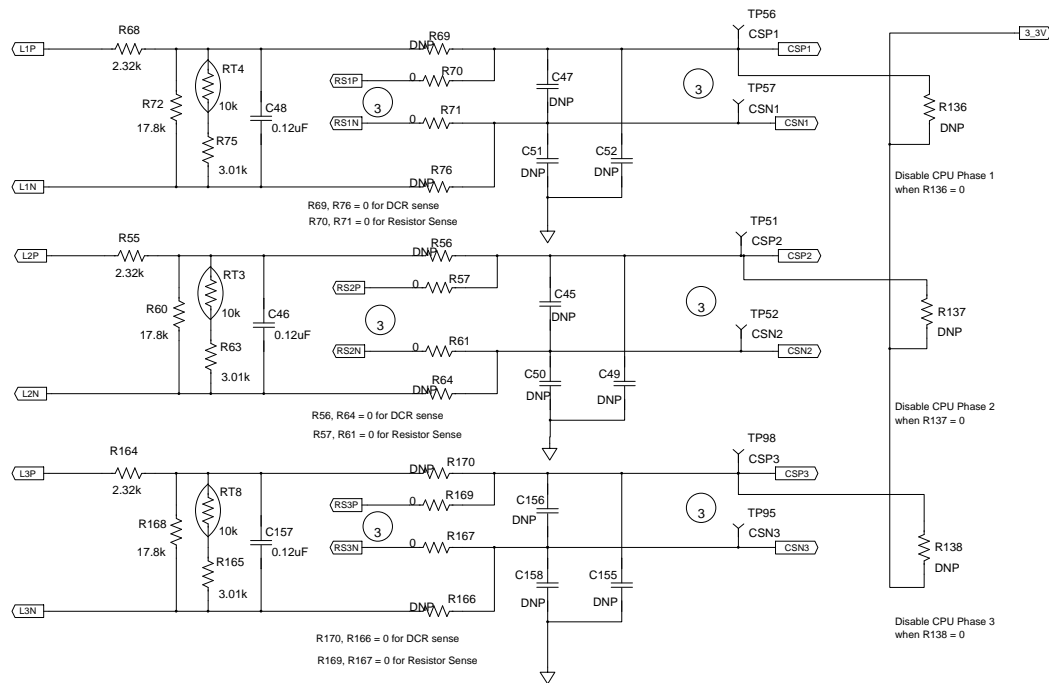
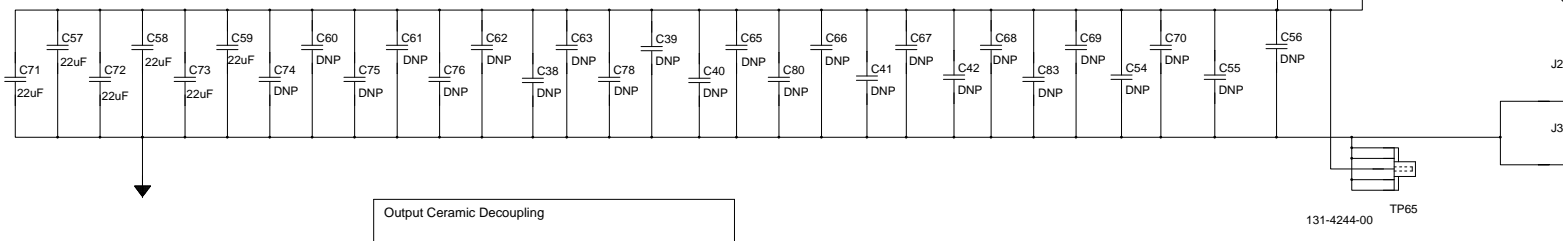
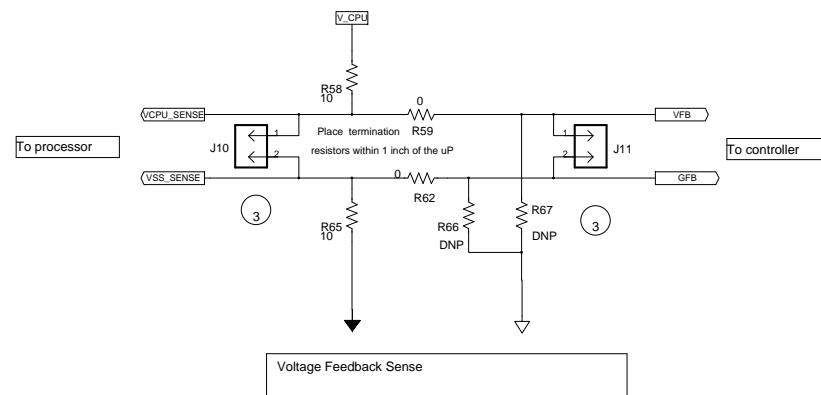


Current Feedback Selection (DCR Sense/ Res Sense) and Filtering



- Notes:
- 1 A "" before a component value indicates this component is not populated in the standard configuration.
 - 2 These connections require kelvin connections to the component
 - 3 These connections are to be run as differential pairs.



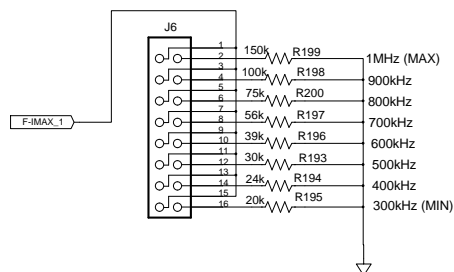
131-4244-00

Size		Number		Rev	
C		PR2071		A	
Date		4/9/2012		Drawn by Rama Venkatraman	
Engineer		Rama Venkatraman		Sheet 2 of 10	
Filename		PR2071A_Apr09_2012.sch			

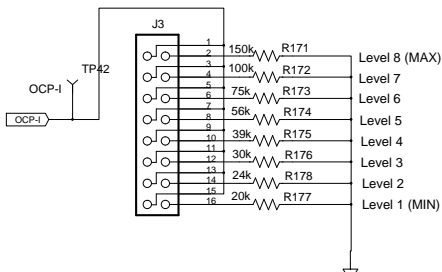
Texas Instruments

Frequency, OCP, OSR, SLEW, RAMP SELECTIONS

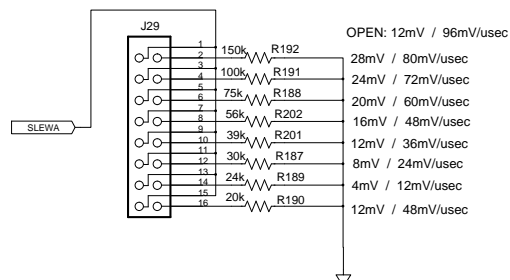
SWITCHING FREQUENCY SELECTION



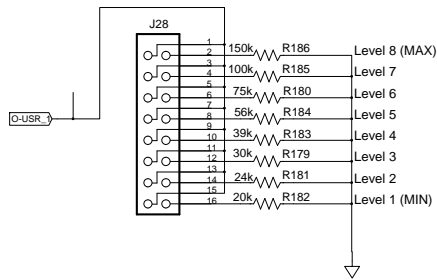
OVER-CURRENT PROTECTION SELECTION



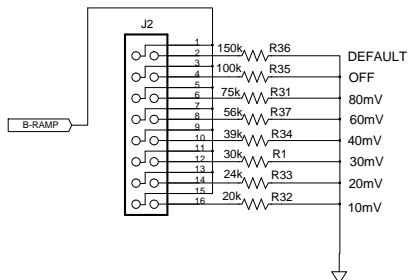
SLEW RATE SELECTION



OSR SELECTION

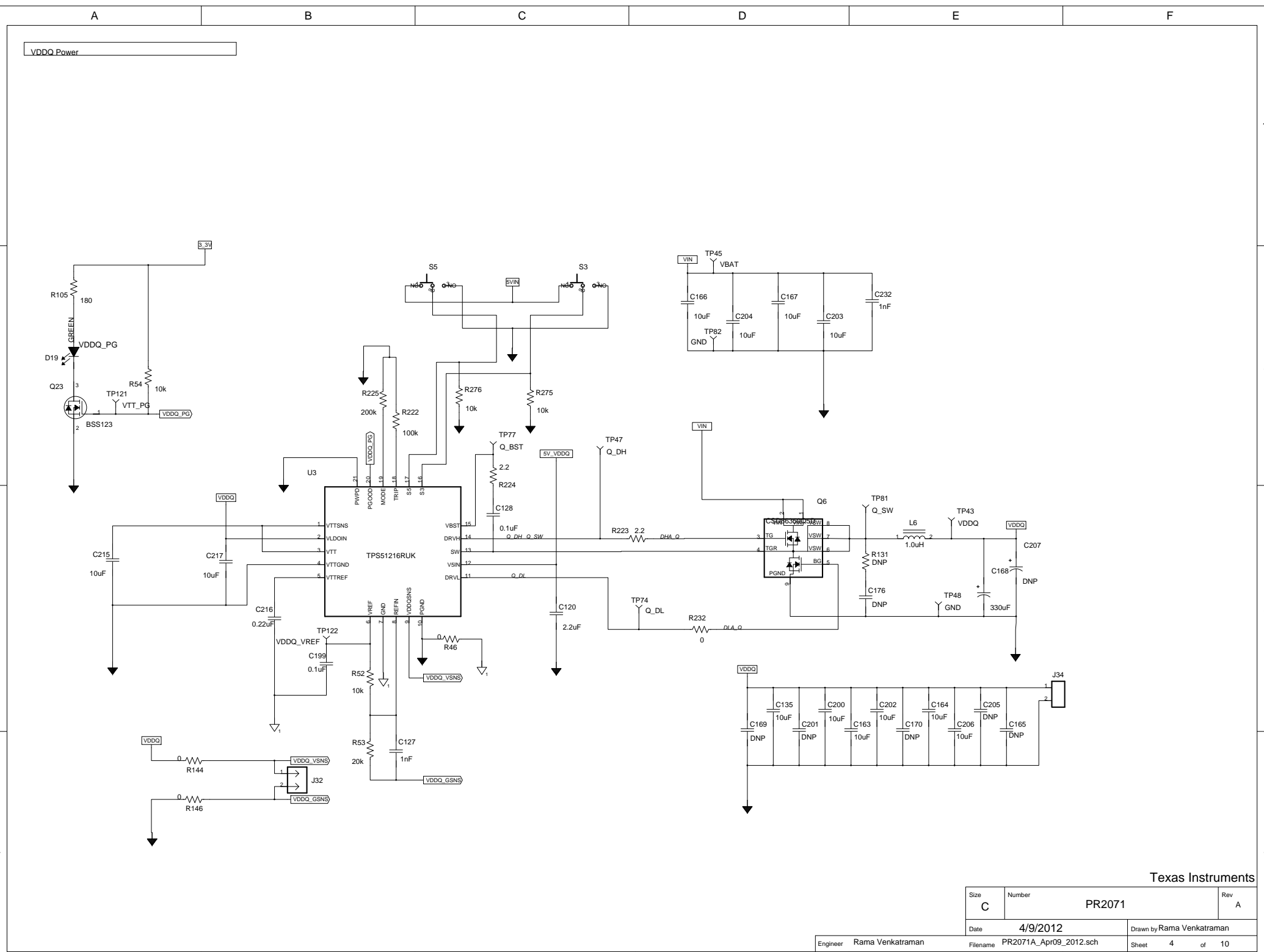


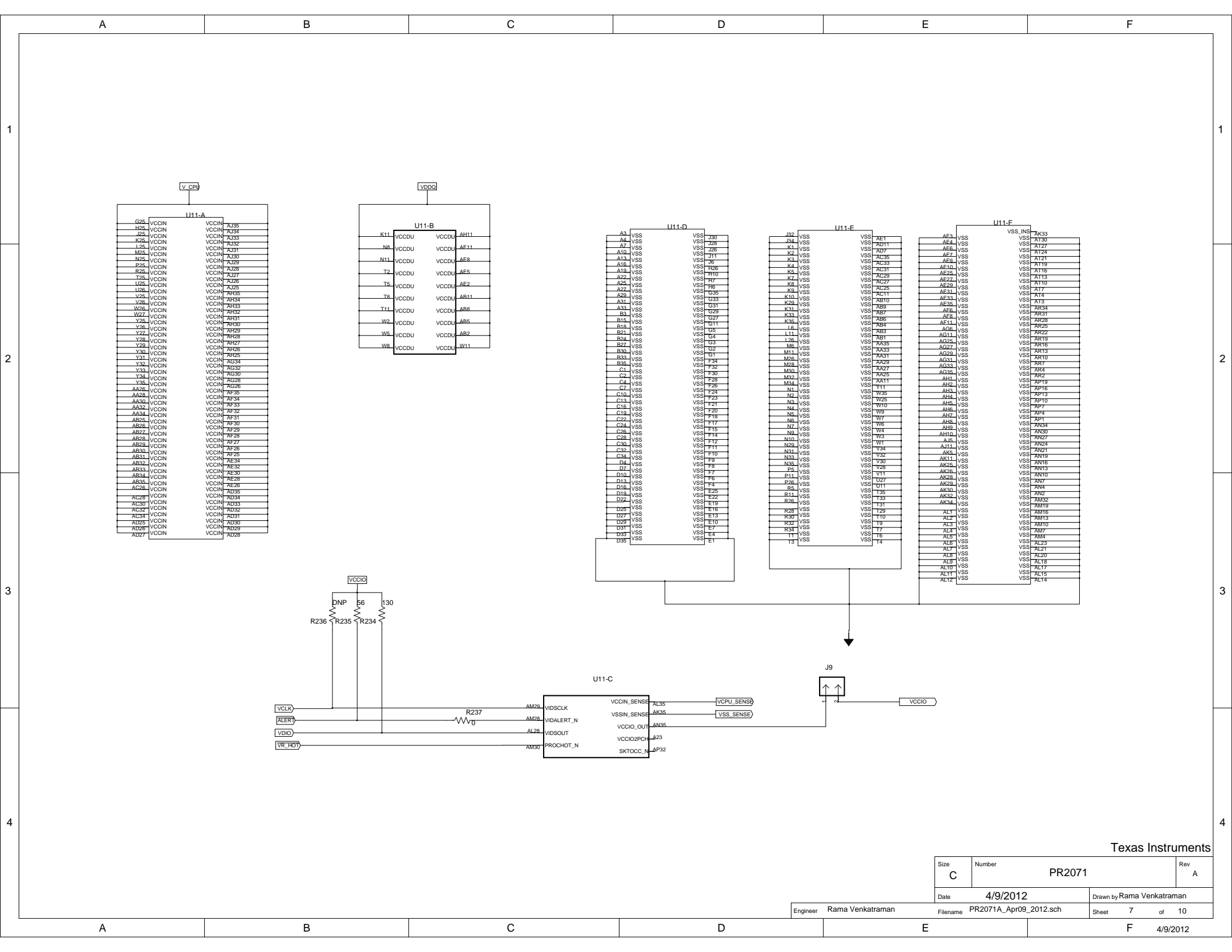
RAMP SELECTION



Texas Instruments

Size C	Number PR2071	Rev A
Date 4/9/2012	Drawn by Rama Venkatraman	
Engineer Rama Venkatraman	Filename PR2071A_Apr09_2012.sch	Sheet 3 of 10





A		B		C		D		E		F	

