

ZZ1 ■Install label in silkscreened box after final wash. Text shall be 8 pt font. Text shall be per Table 1

ZZ2 ■These assemblies are ESD sensitive, ESD precautions shall be observed.

ZZ3 ■These assemblies must be clean and free from flux and all contaminants. Use of no clean flux is not acceptable.

ZZ4 ■These assemblies must comply with workmanship standards IPC-A-610 Class 2., unless otherwise specified.

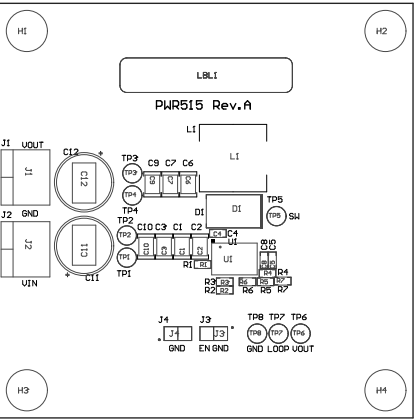


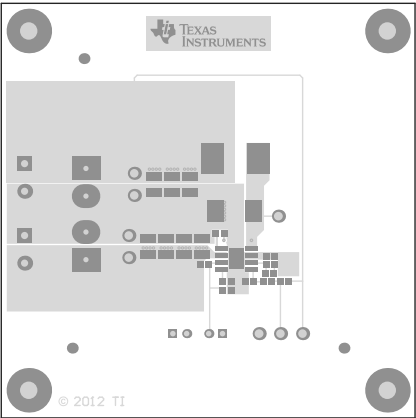
TABLE 1	
Variant	Label text
001	TPS54560EVM-B15
002	TPS54540EVM-B15

COMPONENTS MARKED 'DNP' SHOULD NOT BE POPULATED, AND MAY NOT BE IN BILL OF MATERIALS

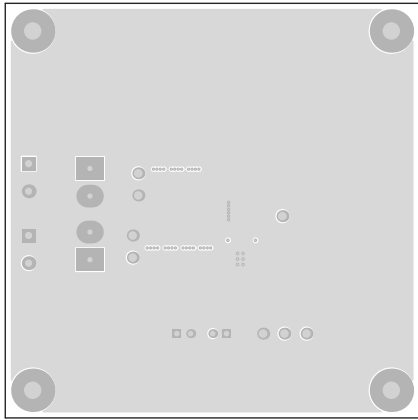
ASSEMBLY VARIANT: [No Variations]

PCB VIEWED FROM TOP SIDE	BOARD #: PWR515	REV: A	SUN REV: Not In VersionControl
IGNORE -> Top Overlay			
PLOT NAME = Top Overlay	GENERATED : 2/19/2013 10:29:22 PM	TEXAS INSTRUMENTS	

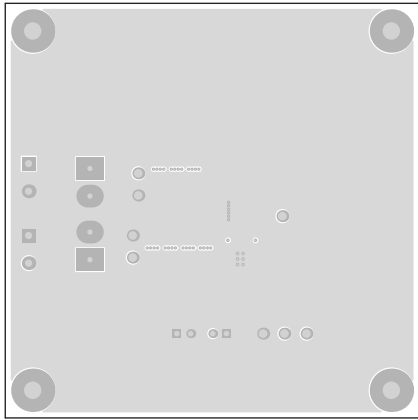
Layer Stack Up Detail for: PWR515A.PcbDoc			
Layer Name	Copper Thickness	Copper Thickness	Substrate Material
Top Solder Mask	(.015)		Solder Resist
Top Layer	(.016)	2.8mil	FR-4
Mid.Layer1	(.02)	2.8mil	FR-4
Mid.Layer2	(.02)	2.8mil	FR-4
Bottom Layer	(.016)	2.8mil	FR-4
Bottom Solder Mask	(.015)		Solder Resist



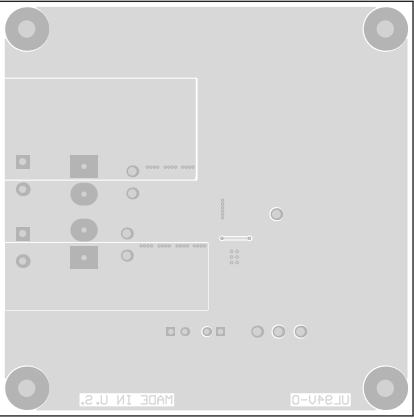
Top Solder



MI Board Outline



MI Board Outline



Bottom Layer